



# **NAVIGATING MAP-21**

**The Route to Federal  
Funding for Your  
Community**

**Sarasota/Manatee MPO  
Performance Measures and Project Priorities**

# MAP-21 (2012)

Moving Ahead for Progress in the 21st Century Act

# FAST Act (2015)

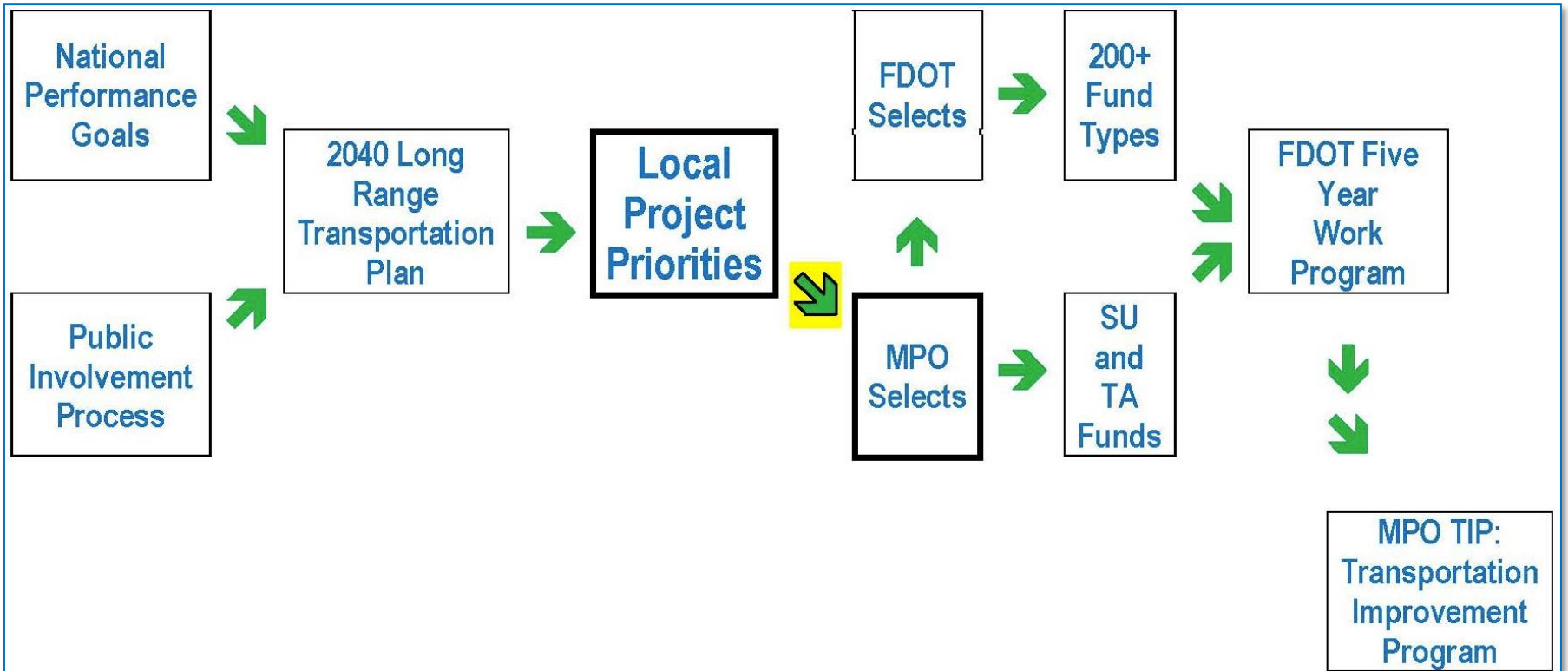
Fixing America's Surface Transportation Act



Invest resources in projects  
to achieve individual targets  
that collectively  
will make progress  
toward national goals.

**NAVIGATING  
MAP-21**  
The Route to Federal  
Funding for Your  
Community

# Project Priorities



# Performance Measures / National Goals

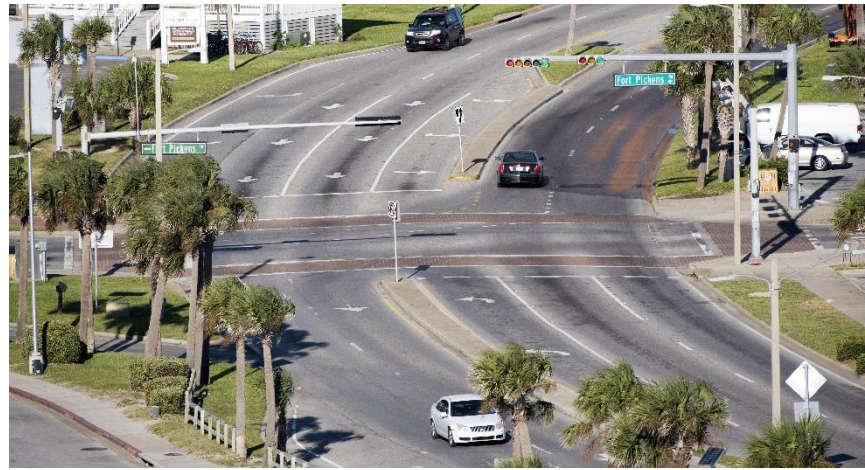
<b>U.S. DOT</b>	<b>Florida DOT</b>	<b>Sarasota/Manatee</b>
<b>Safety</b>	<b>Safety</b>	<b>Safety/ Security</b>
<b>Infrastructure condition</b>	<b>Preservation</b>	<b>Infrastructure condition</b>
<b>Congestion reduction</b>	<b>Mobility</b>	<b>Mobility/ Congestion/ Reliability</b>
<b>System reliability</b>		
<b>Freight movement and economic vitality</b>	<b>Economy</b>	<b>Economy/ Freight</b>
<b>Reduced project delivery delays</b>		<b>Project delivery</b>
<b>Environmental sustainability</b>	<b>Environment</b>	<b>Environment/ Livability</b>

# Performance Measures / National Goals

<b>Sarasota/ Manatee</b>	<b>2040 Long Range Transportation Plan Goals and Principles</b>
<b>Safety/ Security</b>	Improve the safety and security of the transportation system for all users
<b>Infrastructure condition</b>	Improve management, operations, and coordination to promote an efficient transportation system locally and regionally
<b>Mobility/ Congestion/ Reliability</b>	Promote economic vitality and viability through regional coordination of intermodal system
<b>Economy/ Freight</b>	Improve accessibility and multimodal connectivity by promoting proximity to jobs and efficient movement of freight and goods
<b>Environment/ Livability</b>	Improve environmental sustainability and community livability in coordination with local government comprehensive plans
<b>Project Delivery</b>	Allocate funds to projects that enhance regional mobility... continuing to support multimodal accessibility and congestion management...

# Develop a more mode-neutral process...

- Different goals mean different things for different facilities
- Designation of network facilities enables prioritization of all types of projects



# Develop a more mode-neutral process...

- Community
- Regional
- Inter-Regional

Local jurisdiction will determine network designation for project prioritization purposes



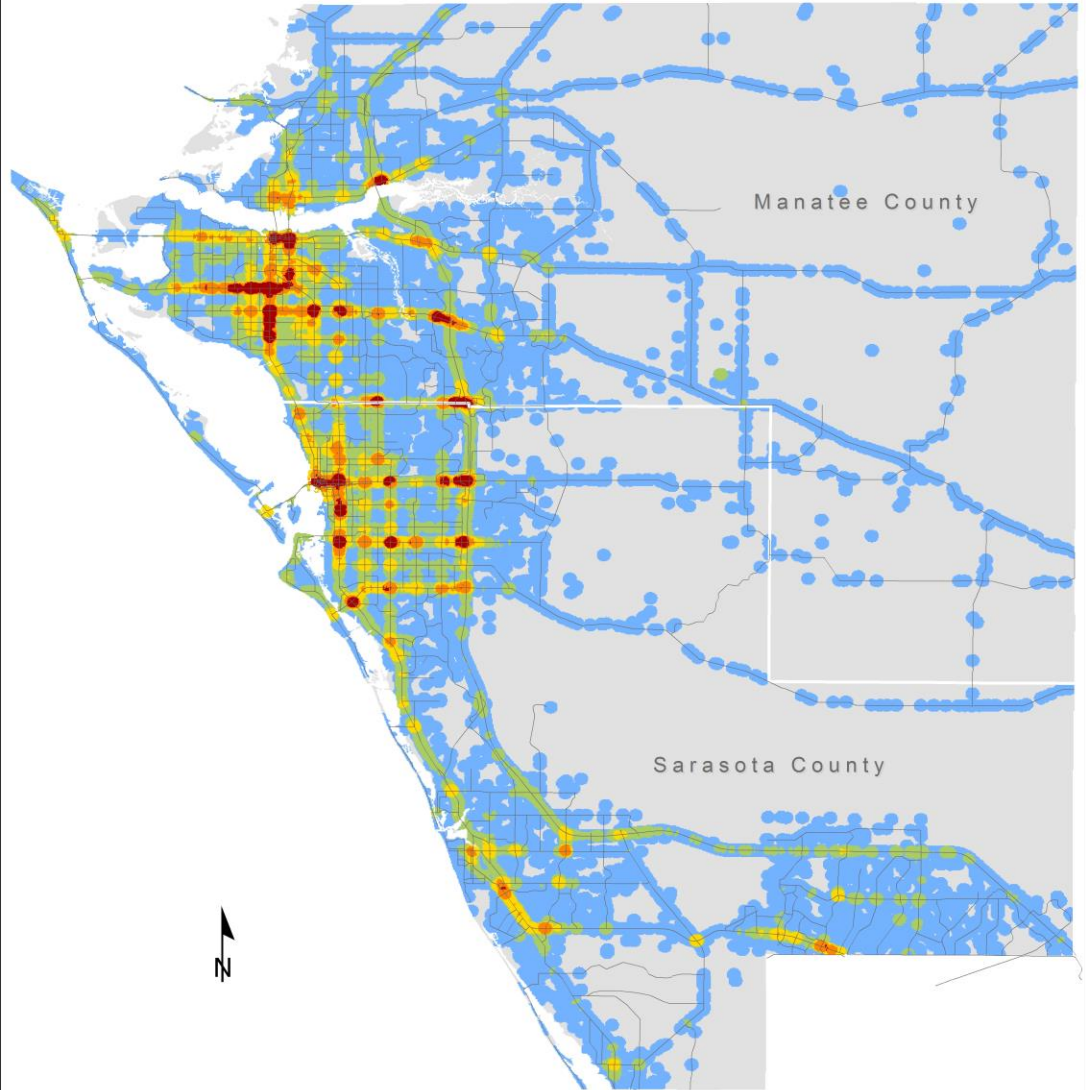
# Safety/Security

...address an identified high crash location?

...improve safety for vulnerable users?



## Crash Hot Spots Fatalities and Serious Injuries



All Crash Distribution (2010-2015)



Crash data for years 2010-2015 from FIRES/DHSMV databases



# Infrastructure Condition

...address aging or deteriorating infrastructure on roads and/or bridges?



Sarasota/Manatee MPO

Bridge Infrastructure Condition  
Category 2: FAIR

- ▲ Arterial Bridges
- Collector and Local Bridges

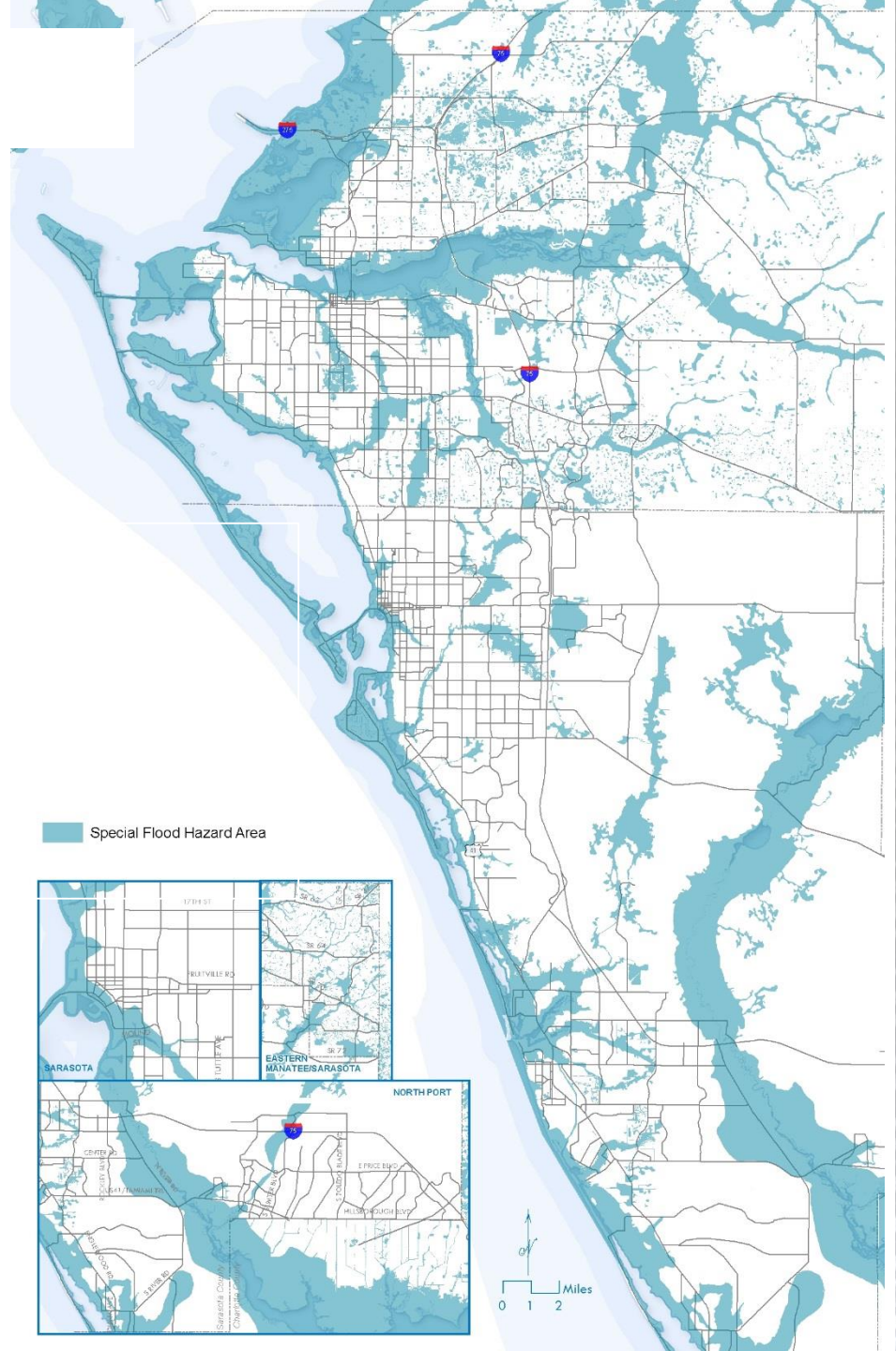
National Bridge Inventory

# Infrastructure Condition

...address flooding or stormwater issues in flood hazard areas or storm surge zones?



Special Flood Hazard Area

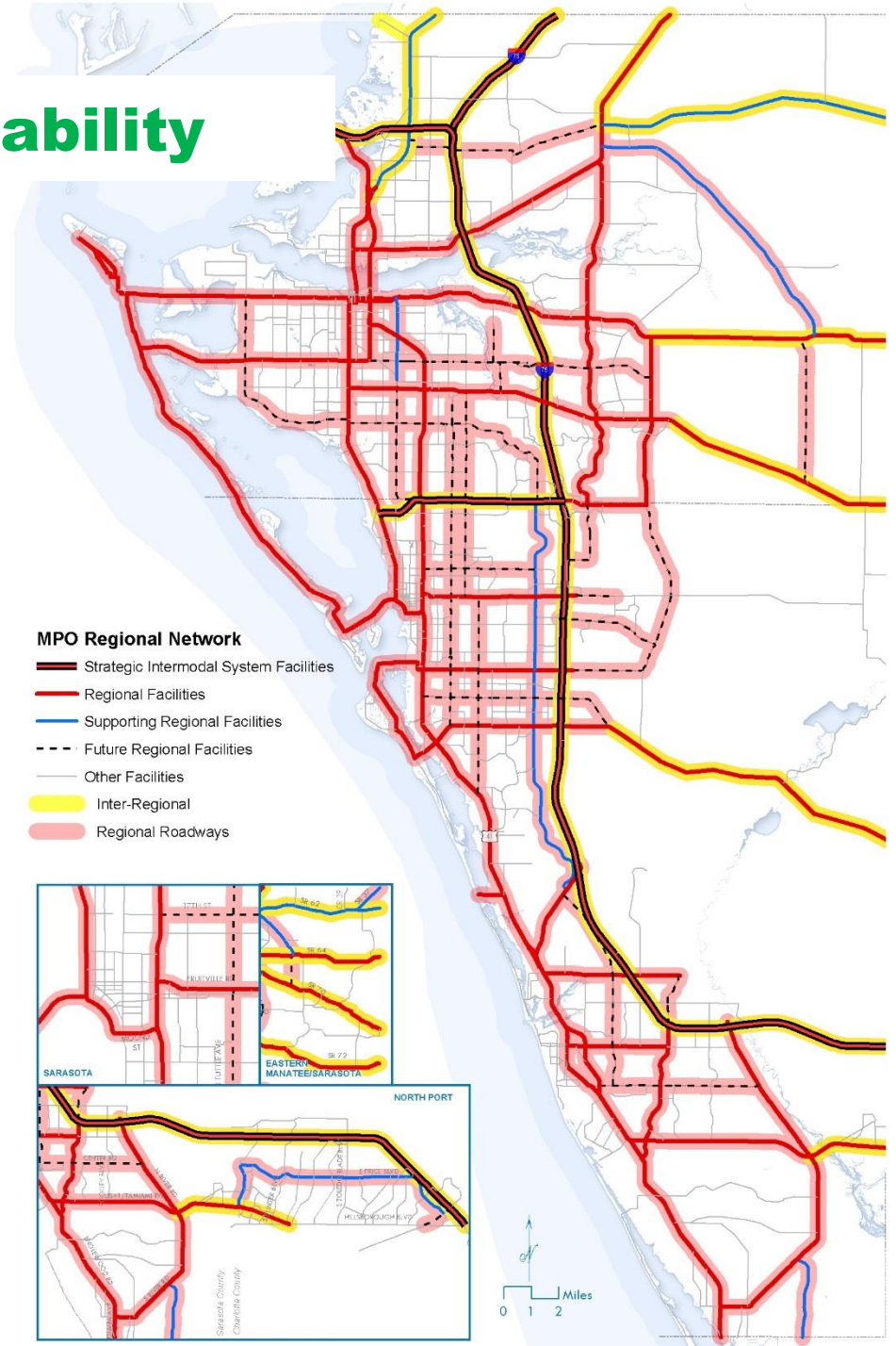


# Mobility/Congestion/Reliability

...improve or expand the Sarasota/Manatee regional roadway network?



## Regional Roadway Network



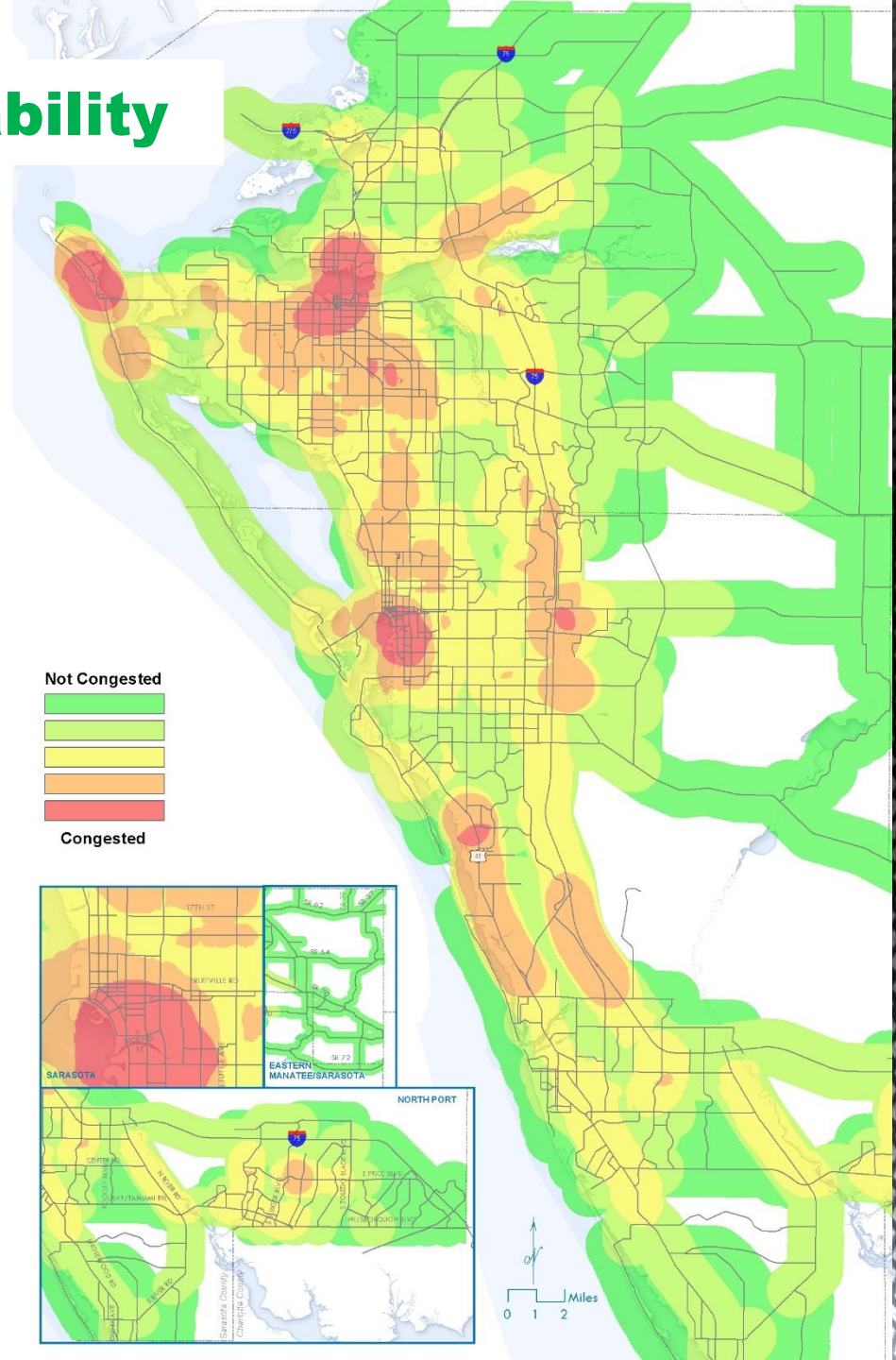
# Mobility/Congestion/Reliability

...reduce congestion on current or future congested corridors?

...include multi-modal options such as transit, bike lanes, sidewalks, and/or trails?



**Congested Areas (2010)**



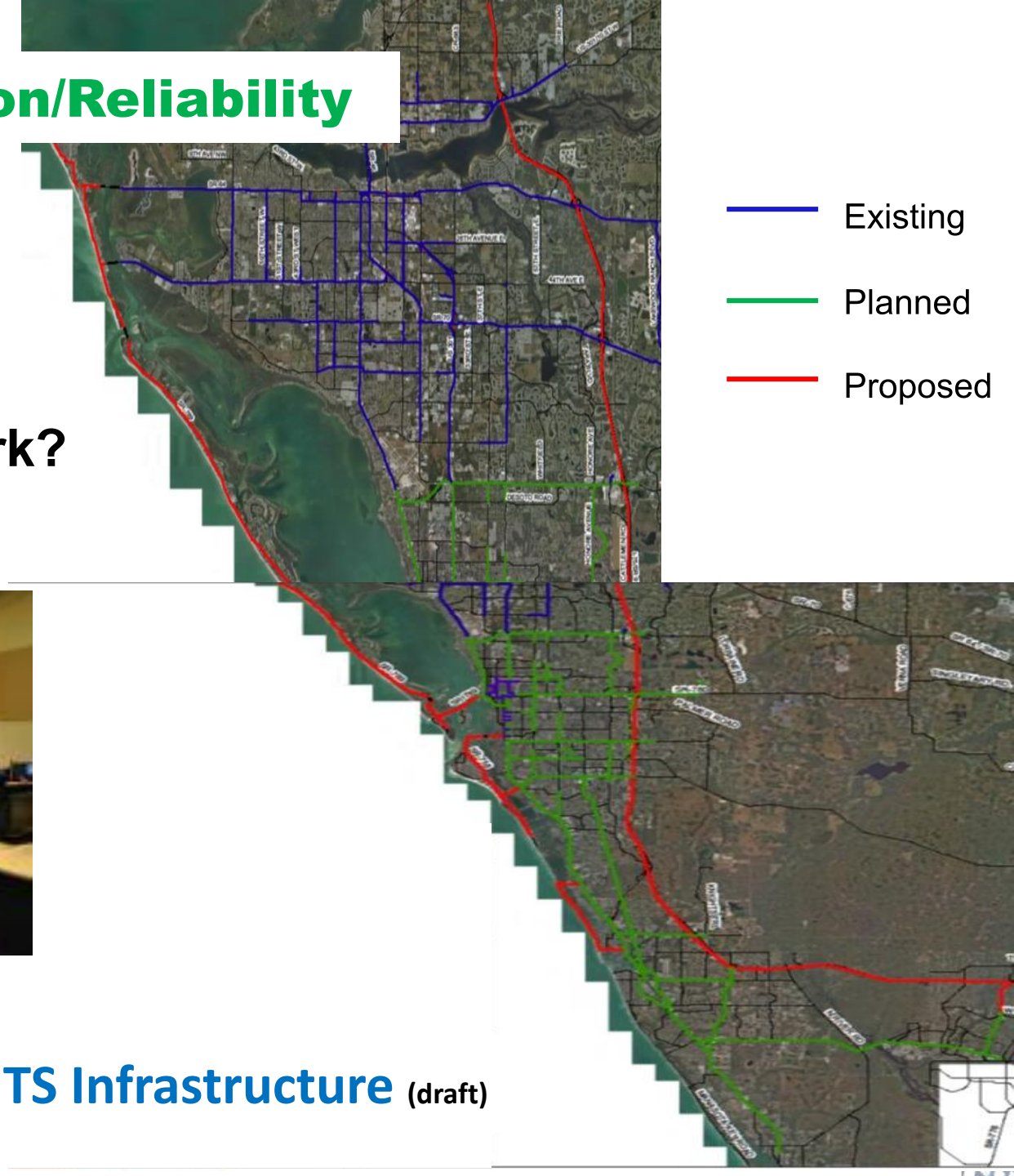
# Mobility/Congestion/Reliability

...expand the advanced traffic management network?

- Existing
- Planned
- Proposed



Existing and Planned ITS Infrastructure (draft)



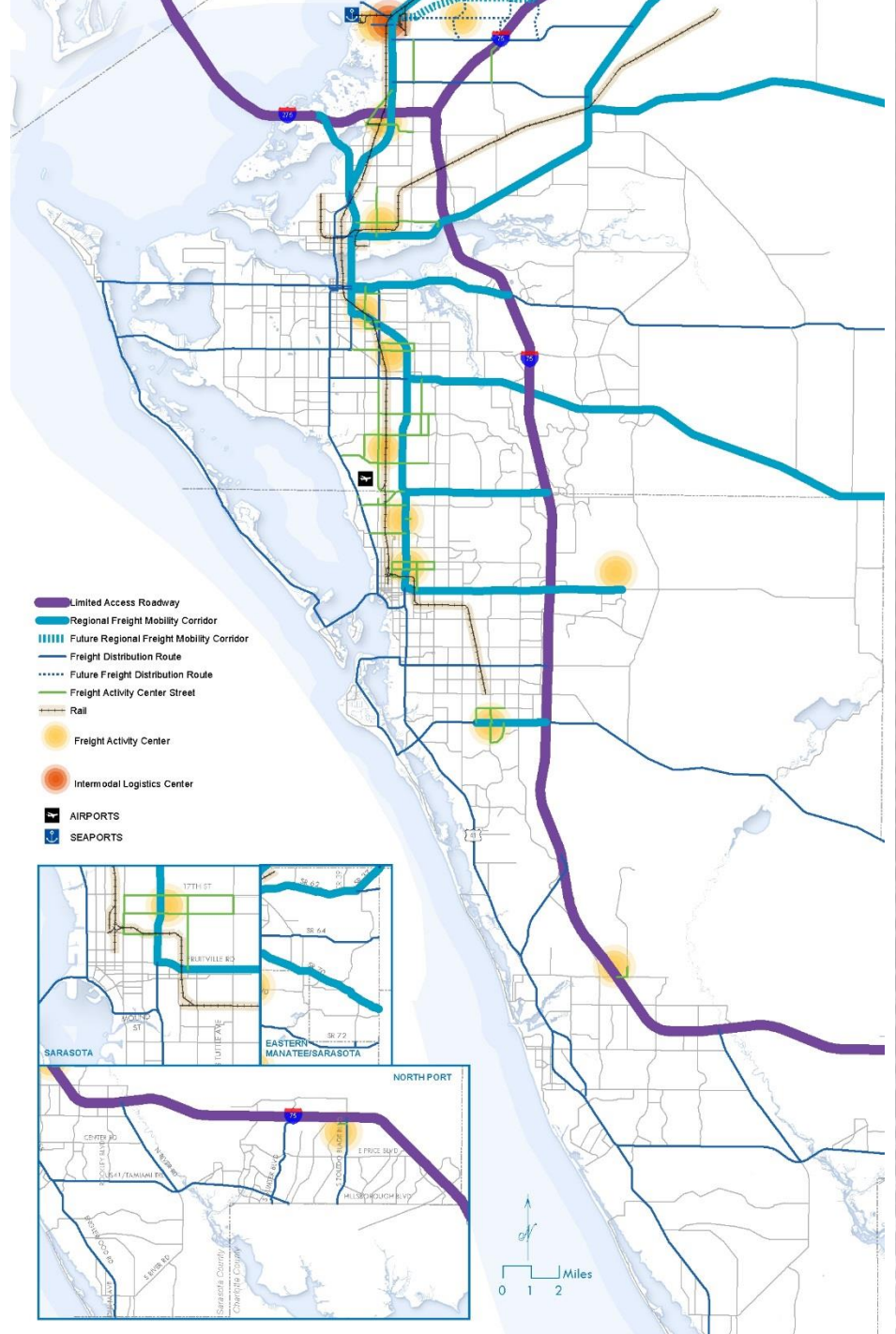
# Economy/Freight

...address a need in a targeted enterprise or economic development zone?

...make improvements to the adopted freight network?



Regional Freight Network



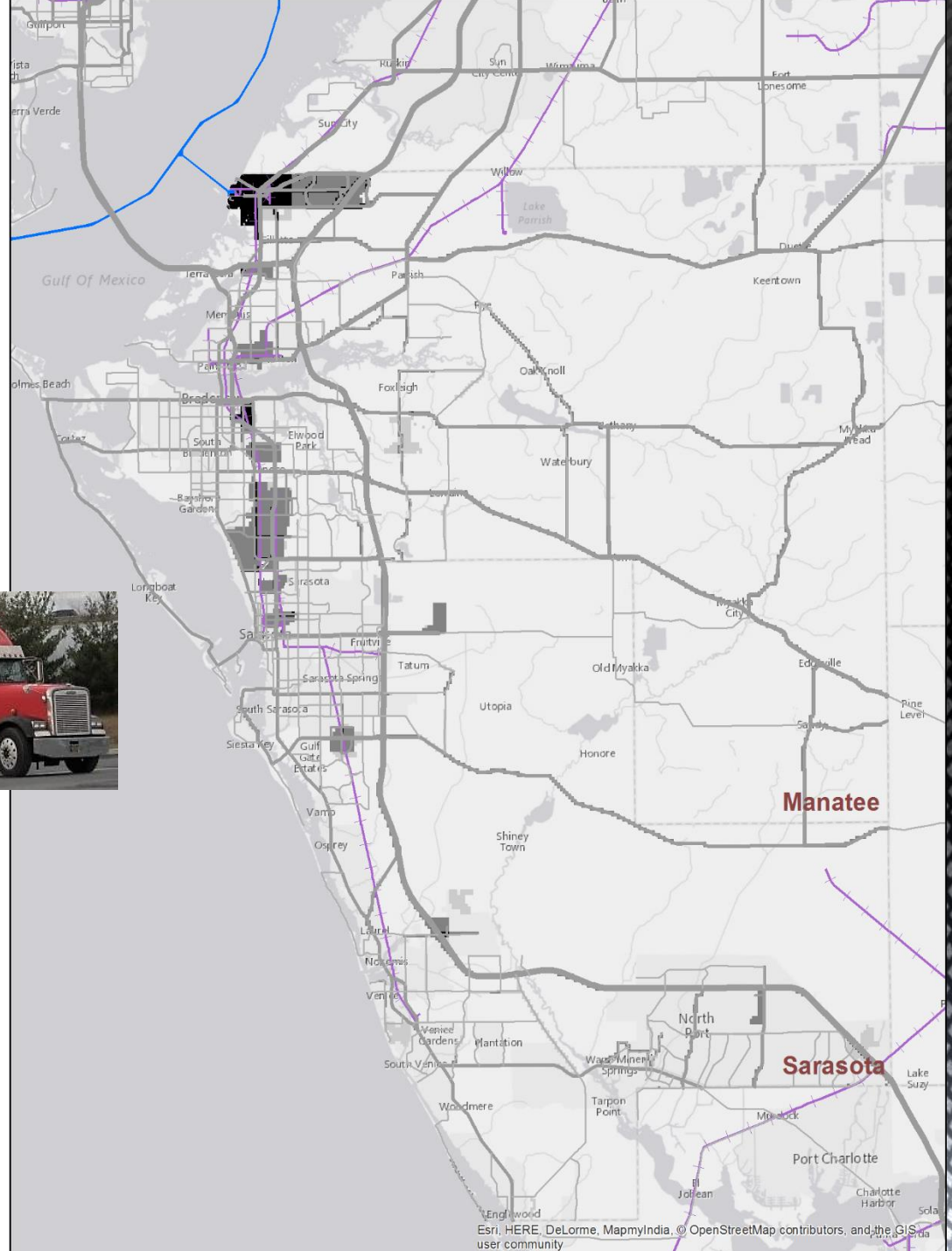
# Economy/Freight

...provide new or improved access to a high freight activity center?



- High Freight Areas
- Medium Freight Areas
- Low Freight Areas

## Freight Intensity Areas



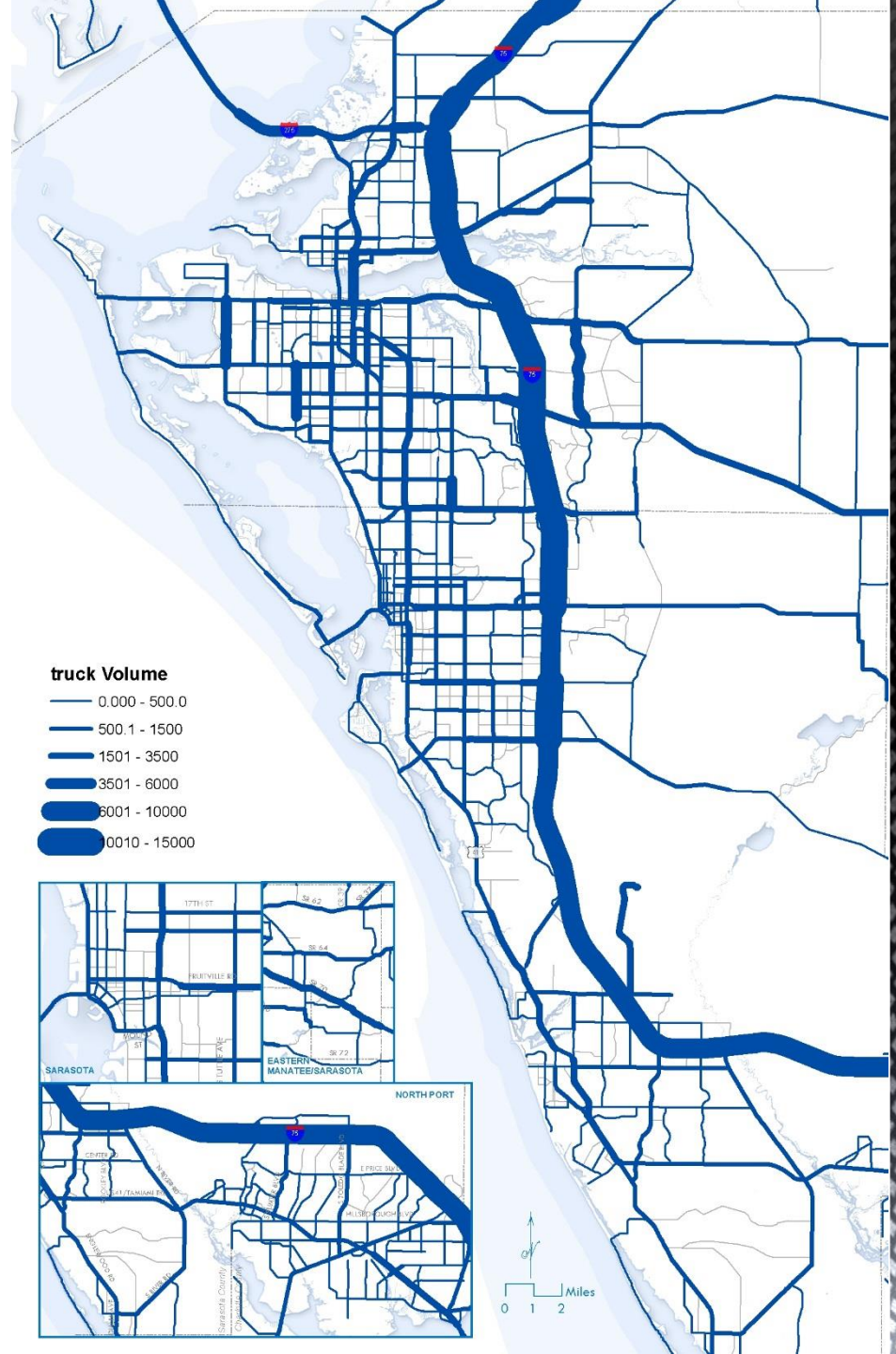
# Economy/Freight

...improve a route with high truck volume?

...improve a route to a major tourist destination?



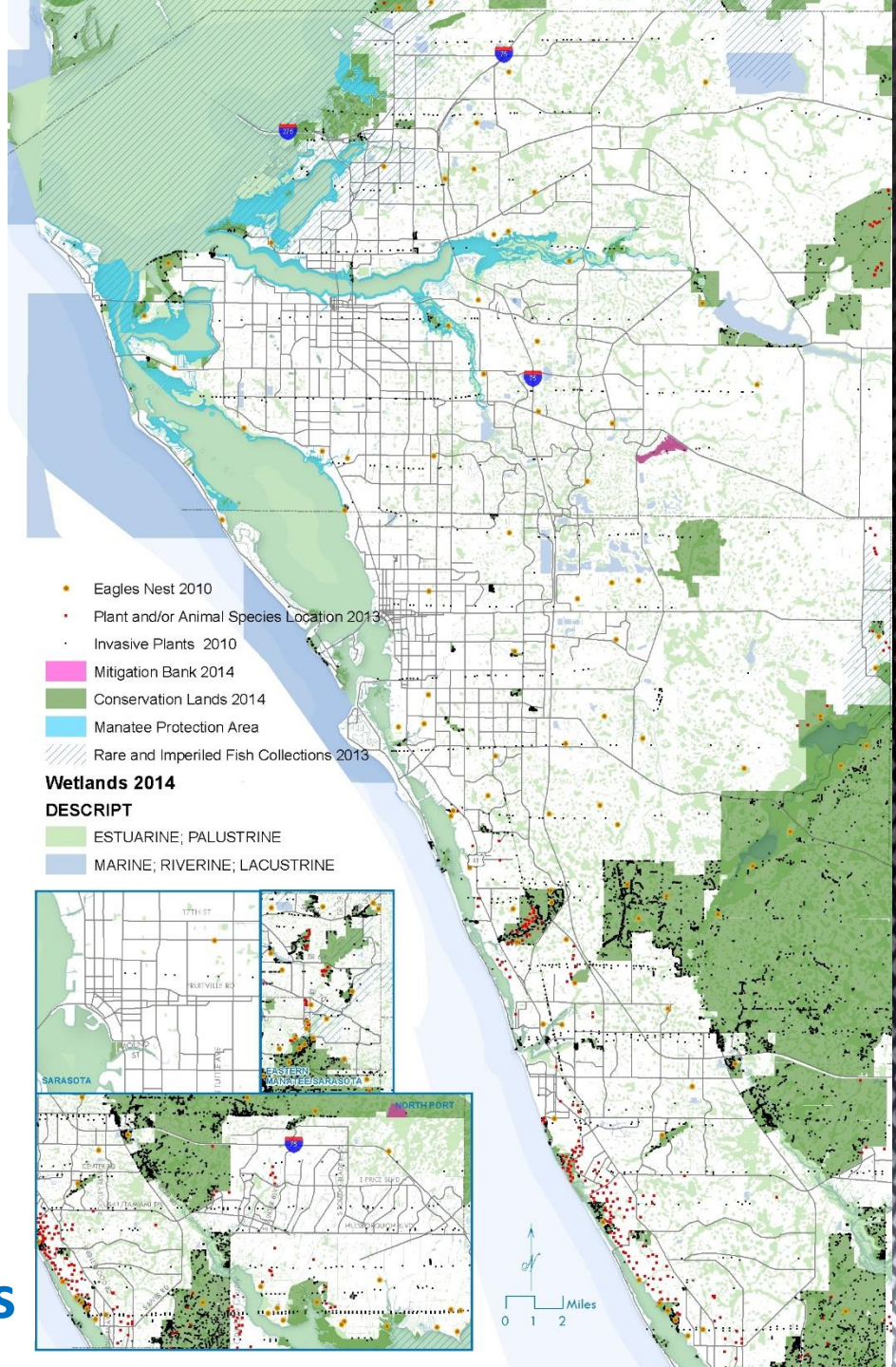
## Daily Truck Traffic





# Environment/Livability

...stay away from critical habitat, wetlands, and endangered species?



Environmentally Sensitive Lands

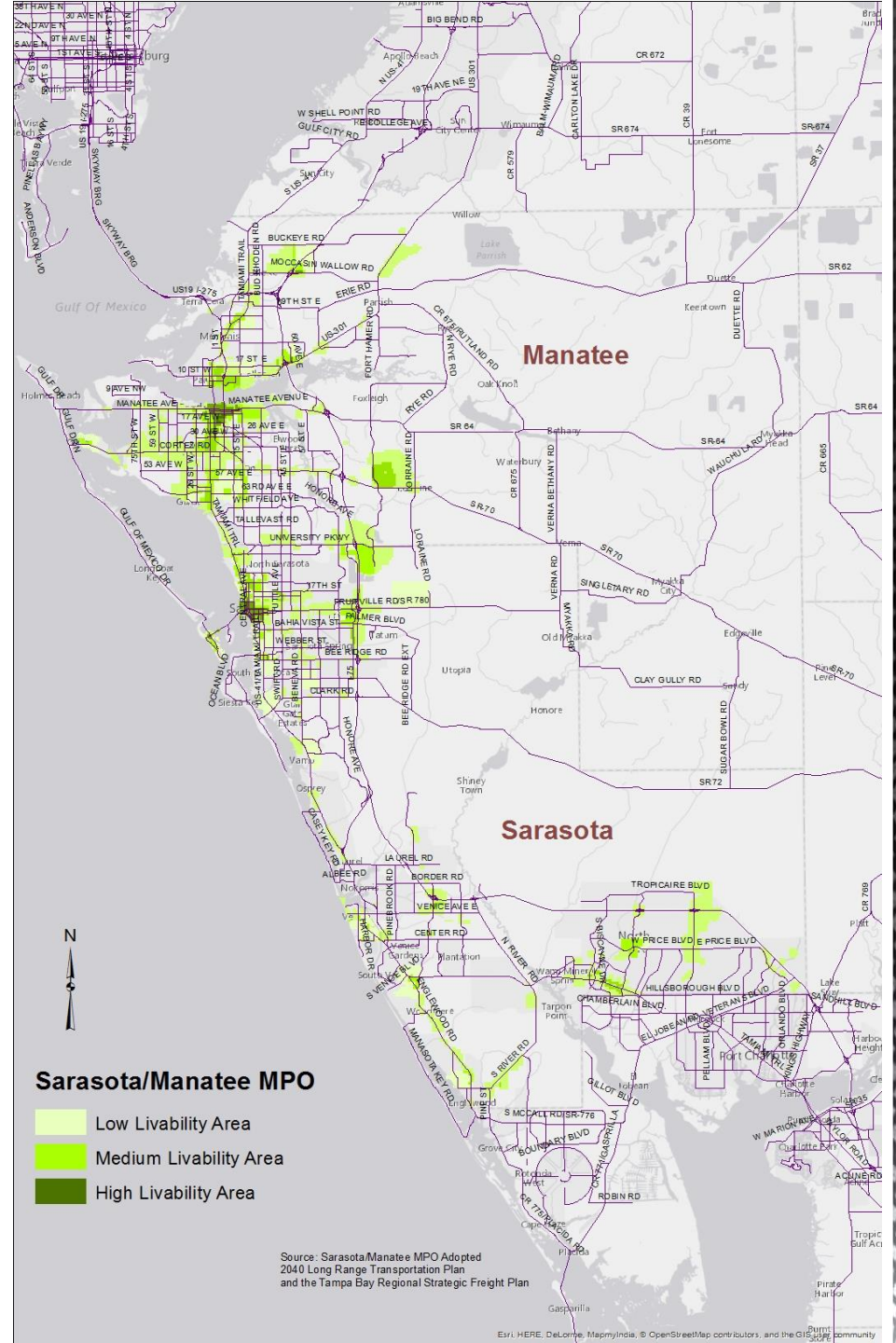
# Environment/Livability



...improve access to transit?

...offer alternatives for individuals and families balancing affordable housing and transportation costs?

...provide transportation options in low income neighborhoods?



# Project Delivery

...continue or complete an existing MPO priority project?

...address an identified need in an FDOT or MPO feasibility study?

...have a local match?

...include a public/private partnership?

...advance a local jurisdiction's top priorities?



# Project Priorities

An update in the project prioritization process will look at all the roadway needs and multimodal needs... as a combined prioritization...

- Reviewed and recommended for approval by the TAC



Planning Goal	Max Points	Community	Regional	Inter-Regional
Safety/ Security	15	40%	25%	25%
Infrastructure Condition	15	15%	15%	8%
Mobility/ Congestion/ Reliability	15	6%	30%	40%
Economy/ Freight	15	4%	10%	15%
Environment/ Livability	15	25%	10%	4%
Project Delivery	15	10%	10%	8%
<b>TOTAL</b>	<b>90</b>	<b>100%</b>	<b>100%</b>	<b>100%</b>



# **NAVIGATING MAP-21**

**The Route to Federal  
Funding for Your  
Community**

**Sarasota/Manatee MPO  
Performance Measures Implementation**