

Deutsch Family Retreat

Venice, Florida

Proposed Preliminary Design Presentation

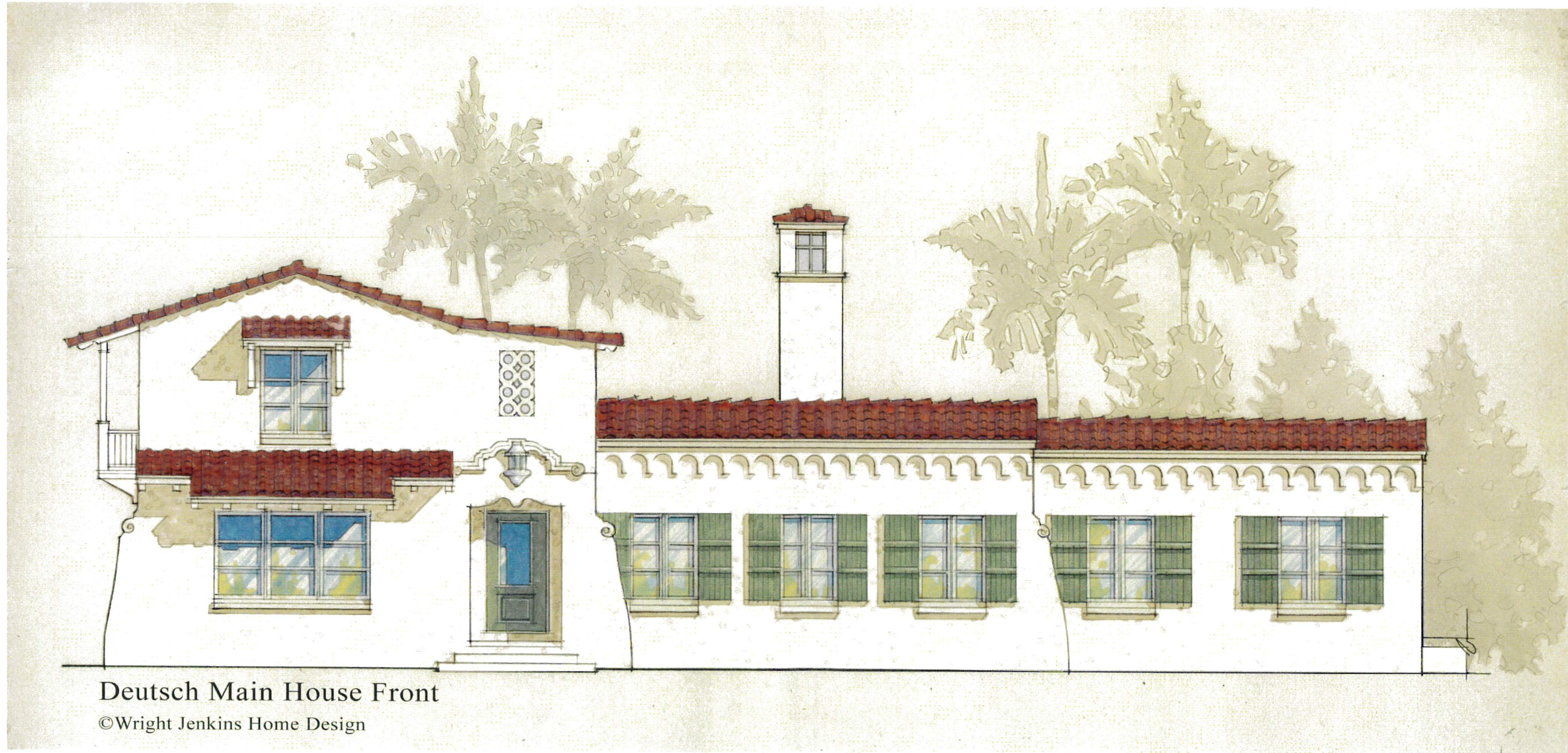
408 Venezia Parkway

WRIGHT JENKINS HOME DESIGN

Building # 1

Main House - Front Elevation

Interior Remodel / new windows



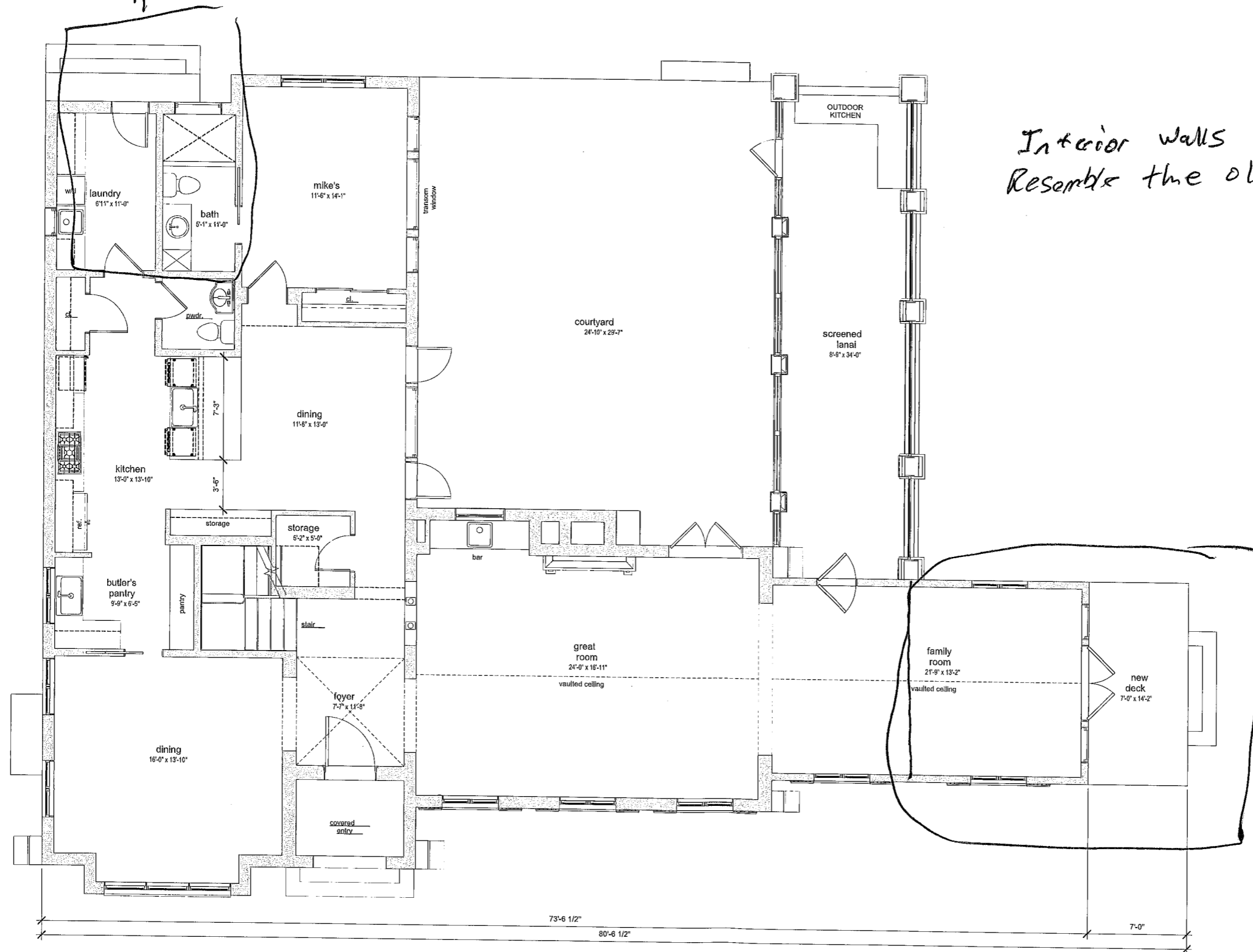
Deutsch Main House Front

©Wright Jenkins Home Design

Exterior walls will be stucco to match existing
Roof will be barrel tile to match existing
Paint to match existing
New windows to have an old school look

Room Addition
↑

Main House - Main Floor



Interior walls to have Drywall to Resemble the old school texture (Plaster)

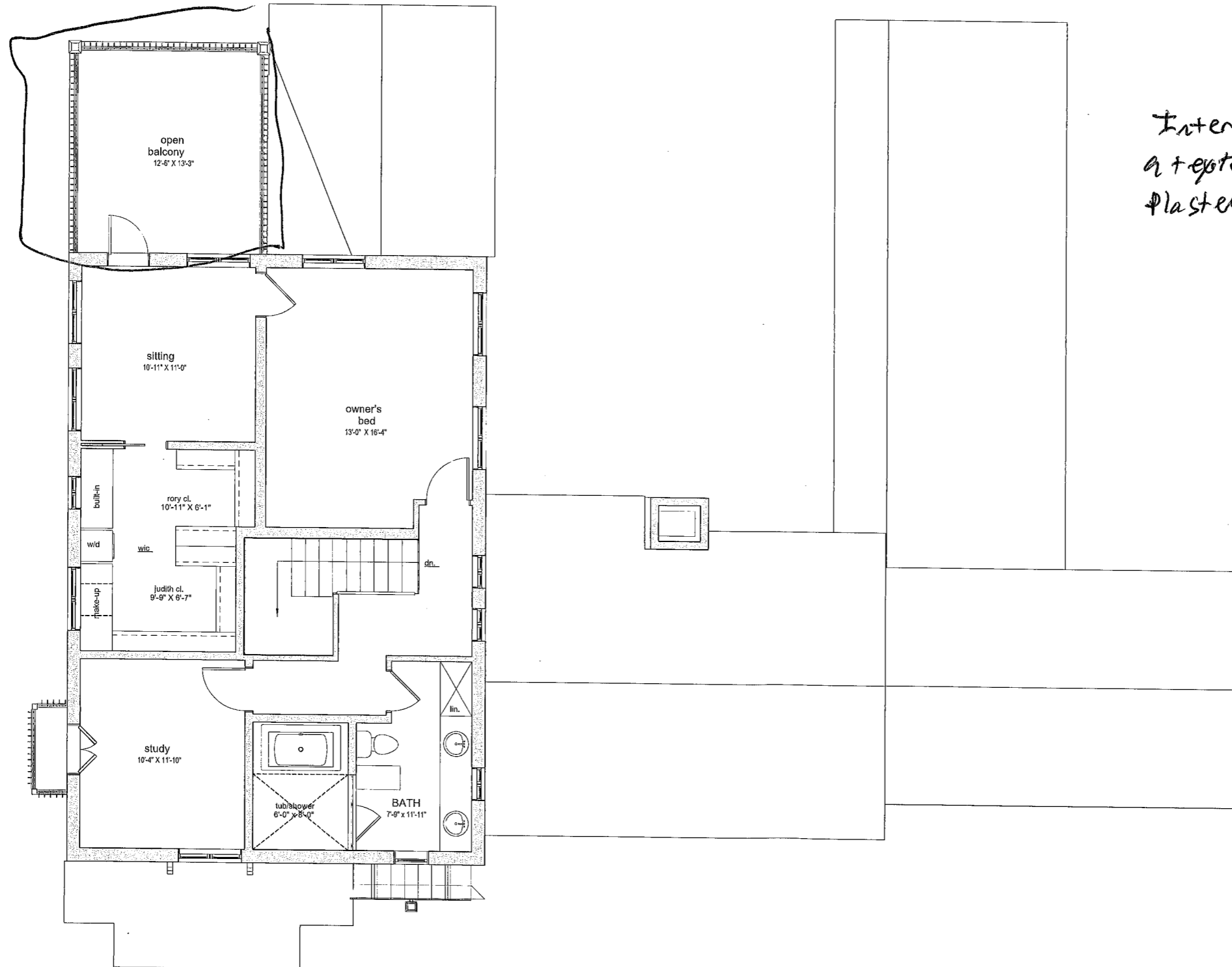
Room Addition

1 MAIN FLOOR PLAN
1/4" = 1'-0"

Add Balcony



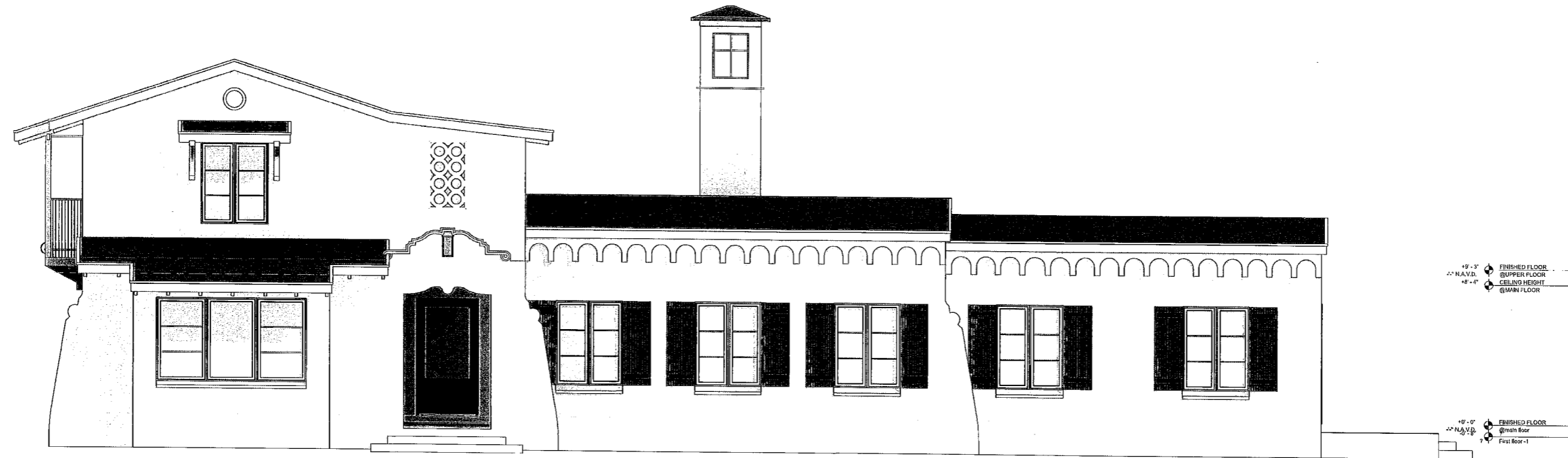
Main House - Upper Floor



Interior walls to be dry wall with a texture to resemble the old school plaster

1 UPPER FLOOR PLAN
1/4" = 1'-0"

Main House - Front & Left Elevations

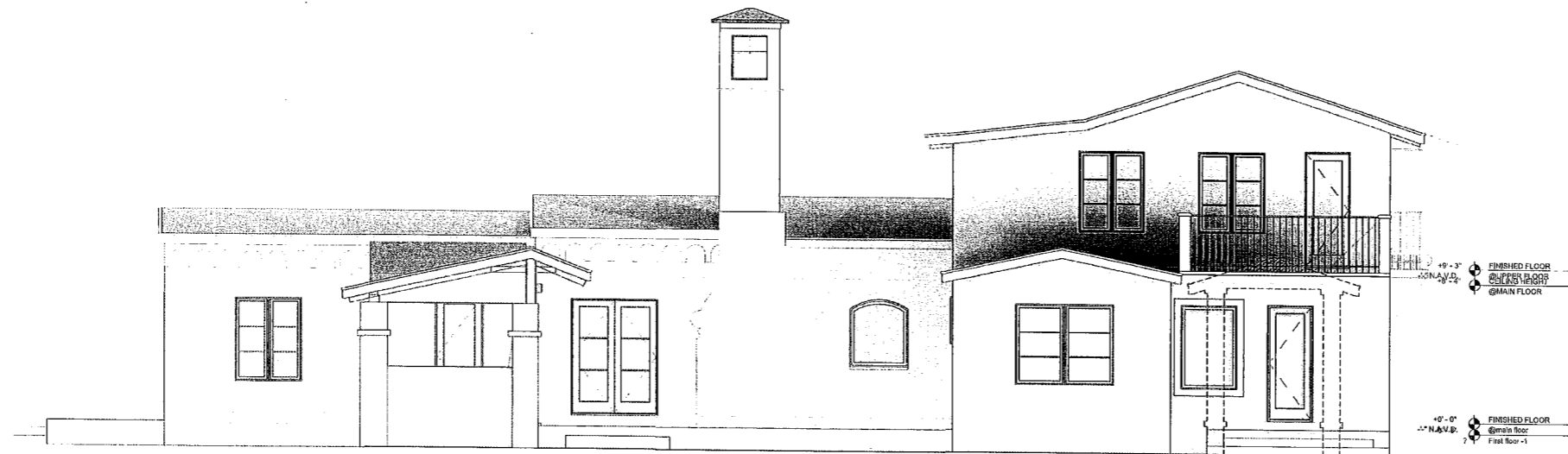


1 FRONT ELEVATION
1/4" = 1'-0"



2 LEFT ELEVATION
3/16" = 1'-0"

Main House - Rear & Right Elevations



1 REAR ELEVATION
3/16" = 1'-0"

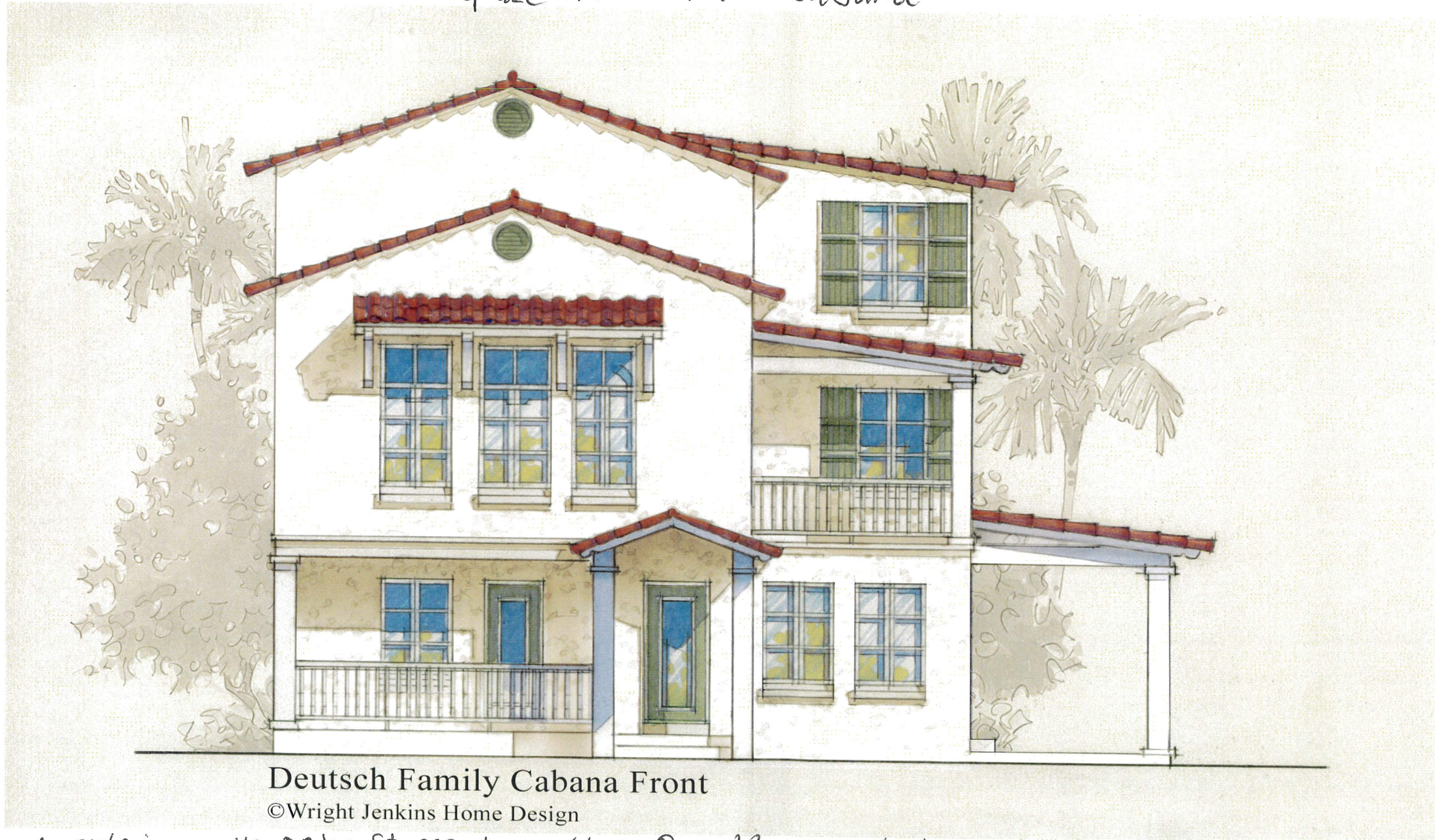


2 RIGHT ELEVATION
3/16" = 1'-0"

Building #2

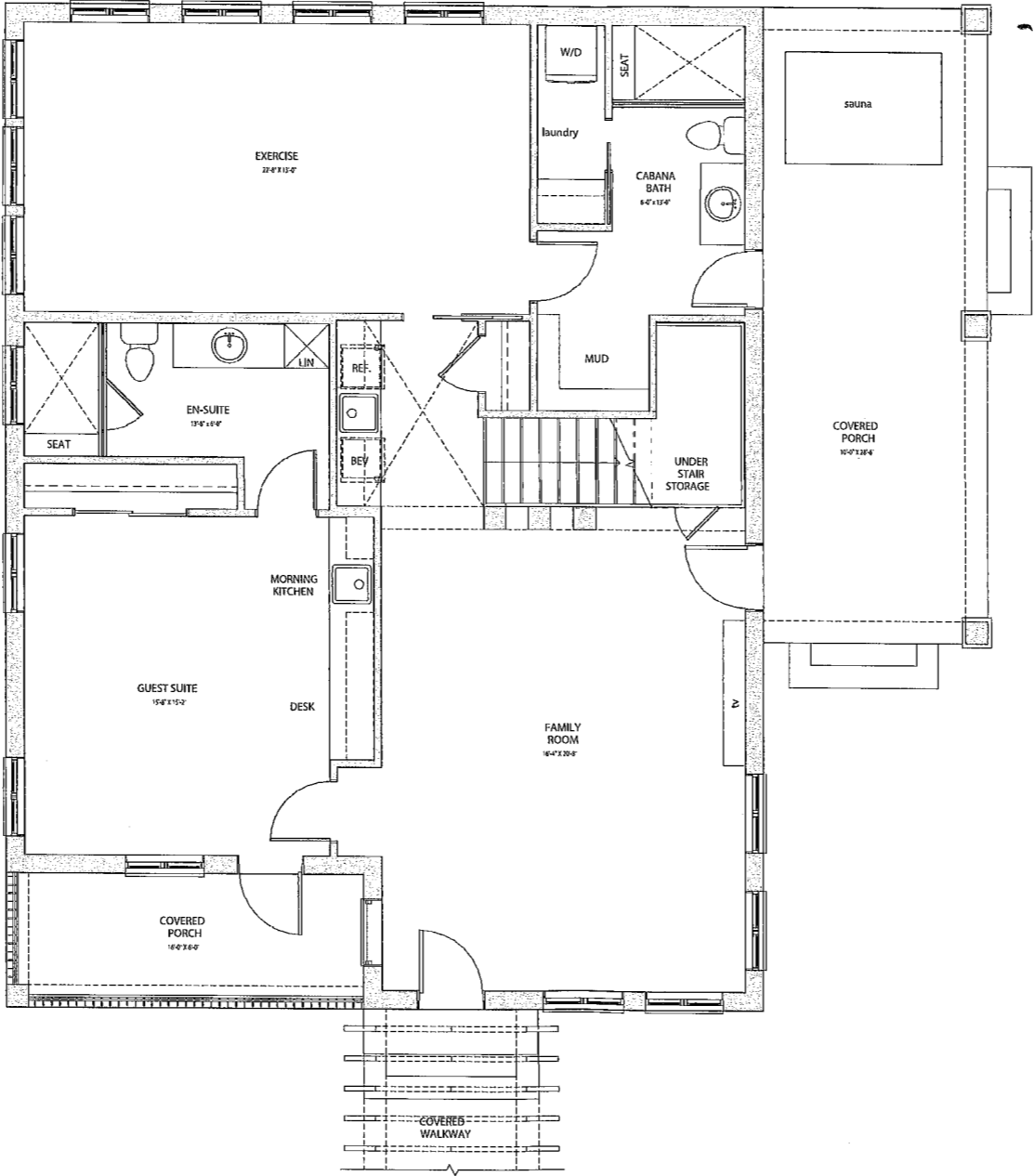
Family Cabana - Front Elevation

Demo and remove existing Garage
Replace it with Cabana



1. exterior walls to be stucco to match or resemble the exterior of Building #1
2. Roof tiles to be Barrel tiles to match Building #1
3. windows to have an old school look
4. exterior paint to match Building #1

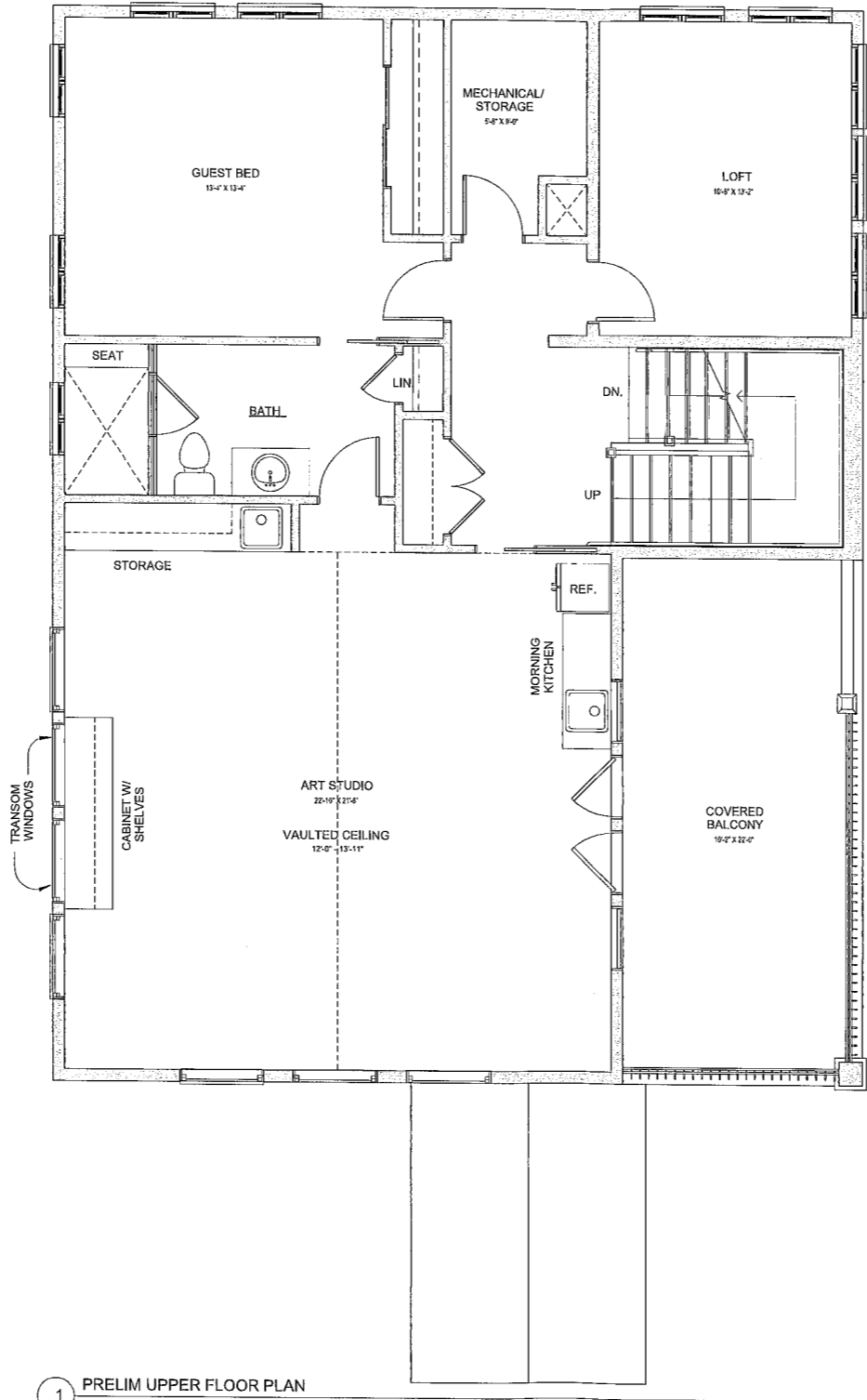
Family Cabana - Main Floor



- Interior Dry wall to be textured to resemble the plaster in Building #2

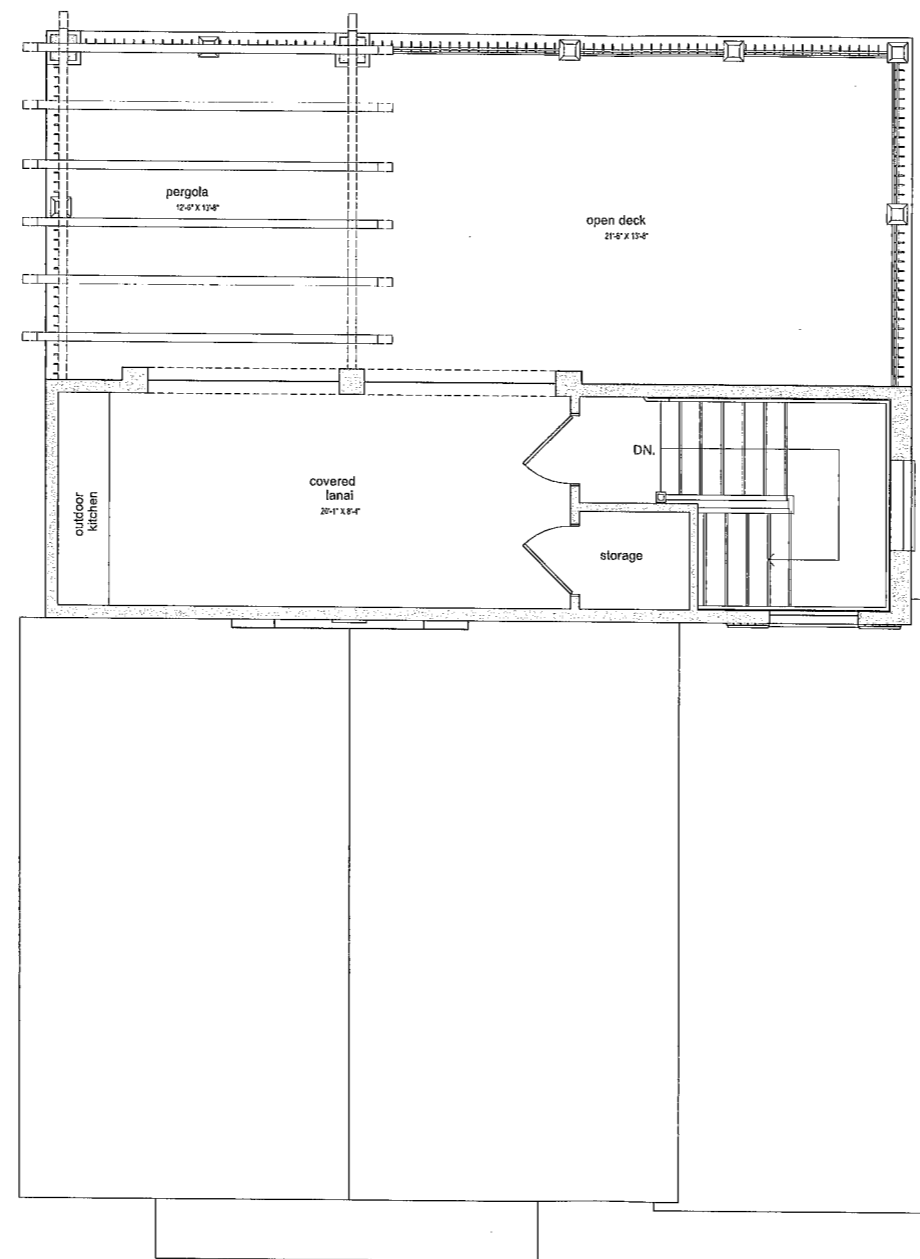
Family Cabana - Upper Floor

Interior Drywall to resemble interior Plaster in Building #2



1 PRELIM UPPER FLOOR PLAN
1/4" = 1'-0"

Family Cabana - Rooftop Deck



1 ROOF TOP DECK PLAN
1/4" = 1'-0"

Family Cabana - Front Elevation



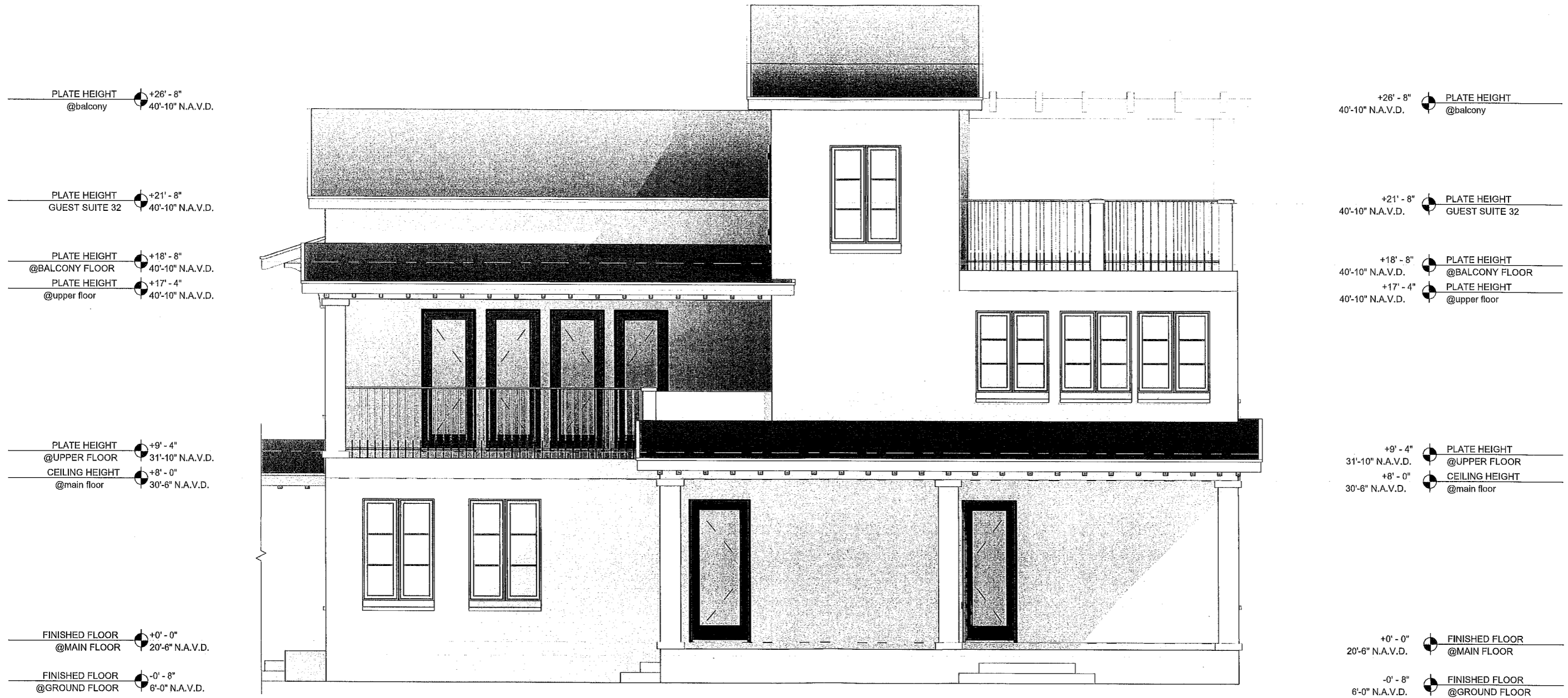
1 FRONT ELEVATION
3/16" = 1'-0"

Family Cabana - Left Elevation



2 LEFT ELEVATION
3/16" = 1'-0"

Family Cabana - Right Elevation



2 RIGHT ELEVATION
3/16" = 1'-0"

Family Cabana - Rear Elevation

PLATE HEIGHT @balcony +26' - 8" 40'-10" N.A.V.D.

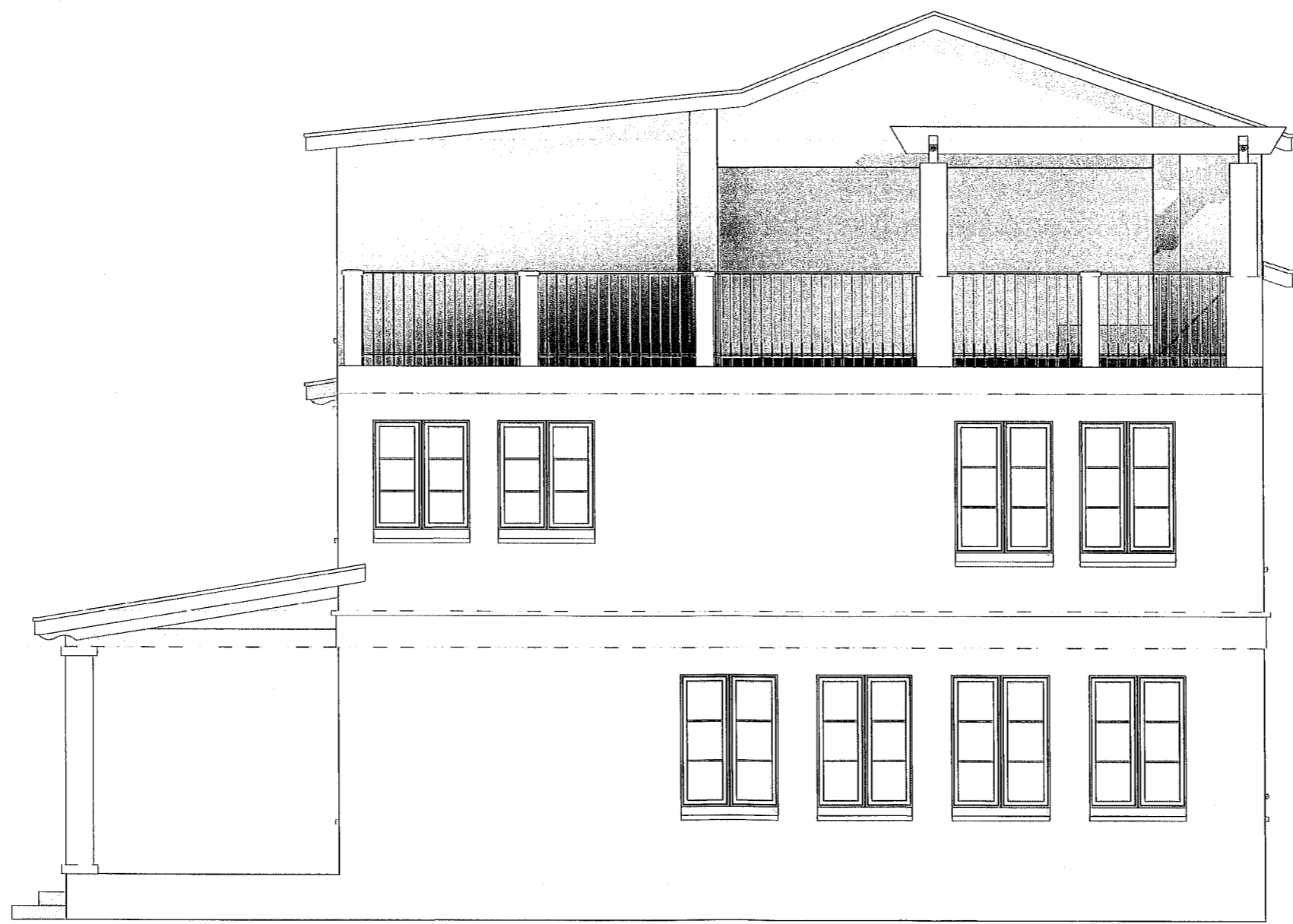
PLATE HEIGHT GUEST SUITE 32 +21' - 8" 40'-10" N.A.V.D.

PLATE HEIGHT @BALCONY FLOOR +18' - 8" 40'-10" N.A.V.D.
 PLATE HEIGHT @upper floor +17' - 4" 40'-10" N.A.V.D.

PLATE HEIGHT @UPPER FLOOR +9' - 4" 31'-10" N.A.V.D.
 CEILING HEIGHT @main floor +8' - 0" 30'-6" N.A.V.D.

FINISHED FLOOR @MAIN FLOOR +0' - 0" 20'-6" N.A.V.D.

FINISHED FLOOR @GROUND FLOOR -0' - 8" 6'-0" N.A.V.D.



+26' - 8" PLATE HEIGHT @balcony 40'-10" N.A.V.D.

+21' - 8" PLATE HEIGHT GUEST SUITE 32 40'-10" N.A.V.D.

+18' - 8" PLATE HEIGHT @BALCONY FLOOR 40'-10" N.A.V.D.
 +17' - 4" PLATE HEIGHT @upper floor 40'-10" N.A.V.D.

+9' - 4" PLATE HEIGHT @UPPER FLOOR 31'-10" N.A.V.D.
 +8' - 0" CEILING HEIGHT @main floor 30'-6" N.A.V.D.

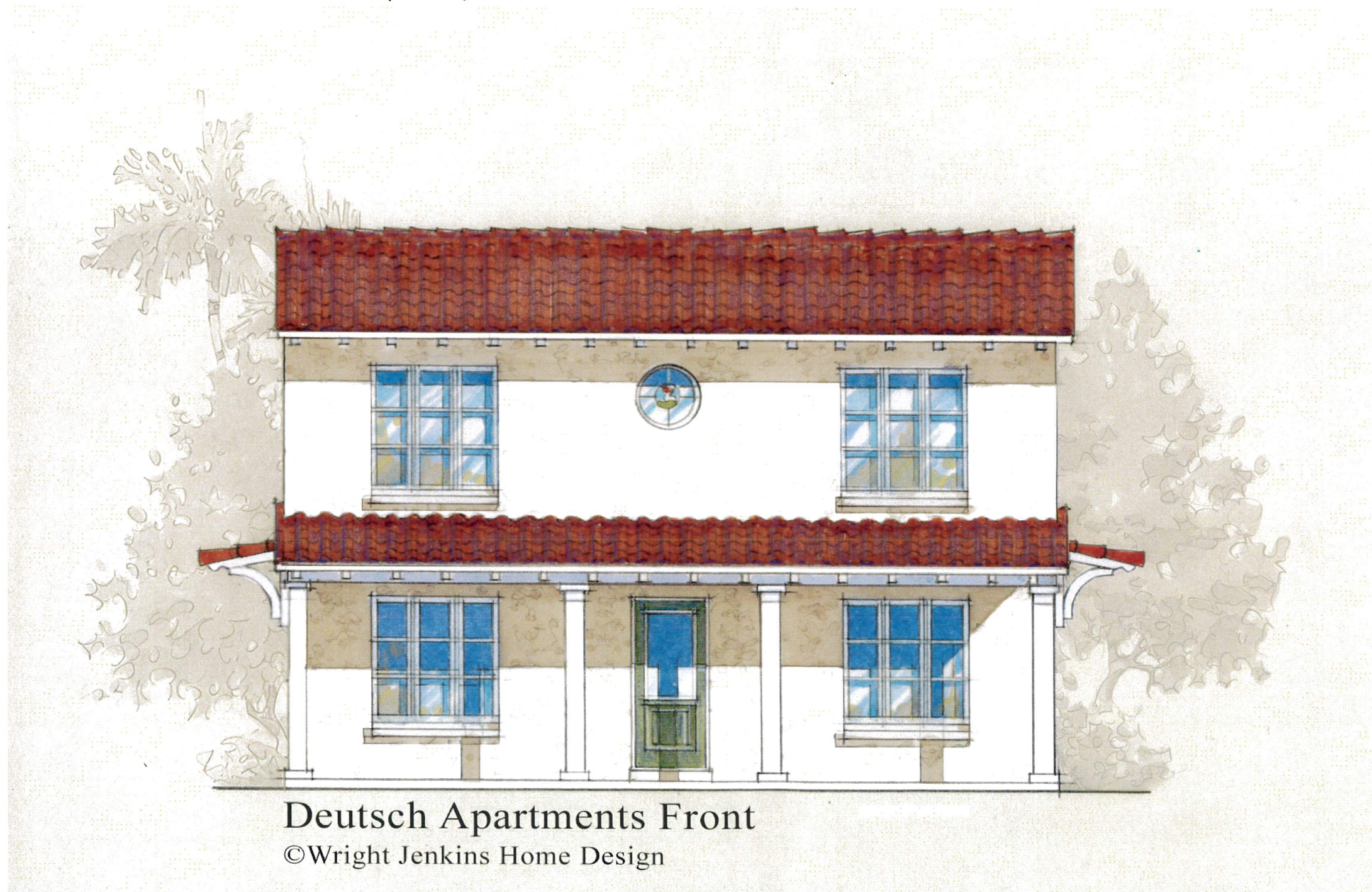
+0' - 0" FINISHED FLOOR @MAIN FLOOR 20'-6" N.A.V.D.

-0' - 8" FINISHED FLOOR @GROUND FLOOR 6'-0" N.A.V.D.

1 REAR ELEVATION
 3/16" = 1'-0"

Building #3

Apartments - Front Elevation
Interior remodel up and down stairs
A First Floor covered porch



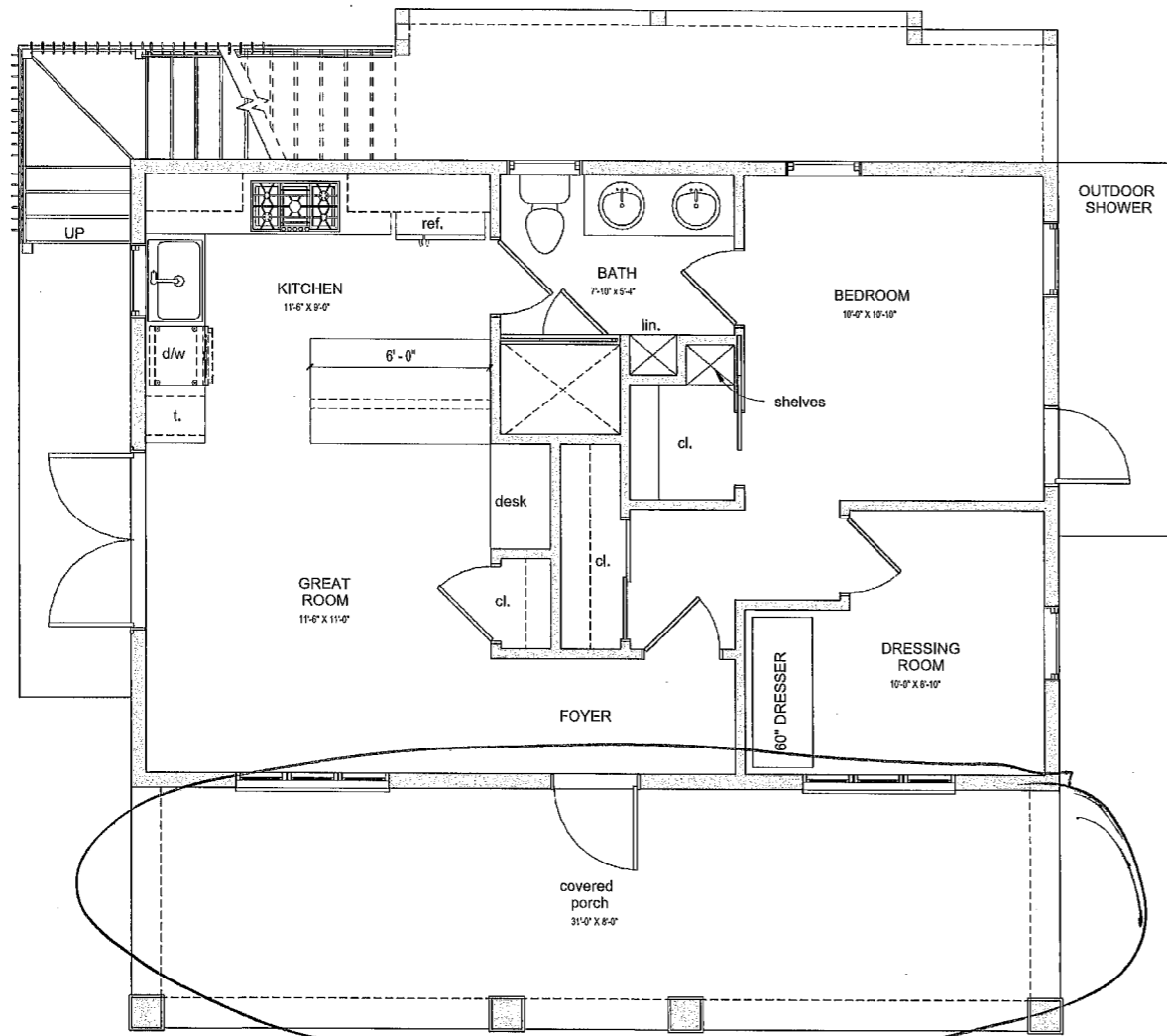
Deutsch Apartments Front

©Wright Jenkins Home Design

1. Roof tiles to be Barrel tiles to match Building #1
2. Exterior Stucco to be finished in a way to resemble Building #1
3. Windows to have an old fashioned look

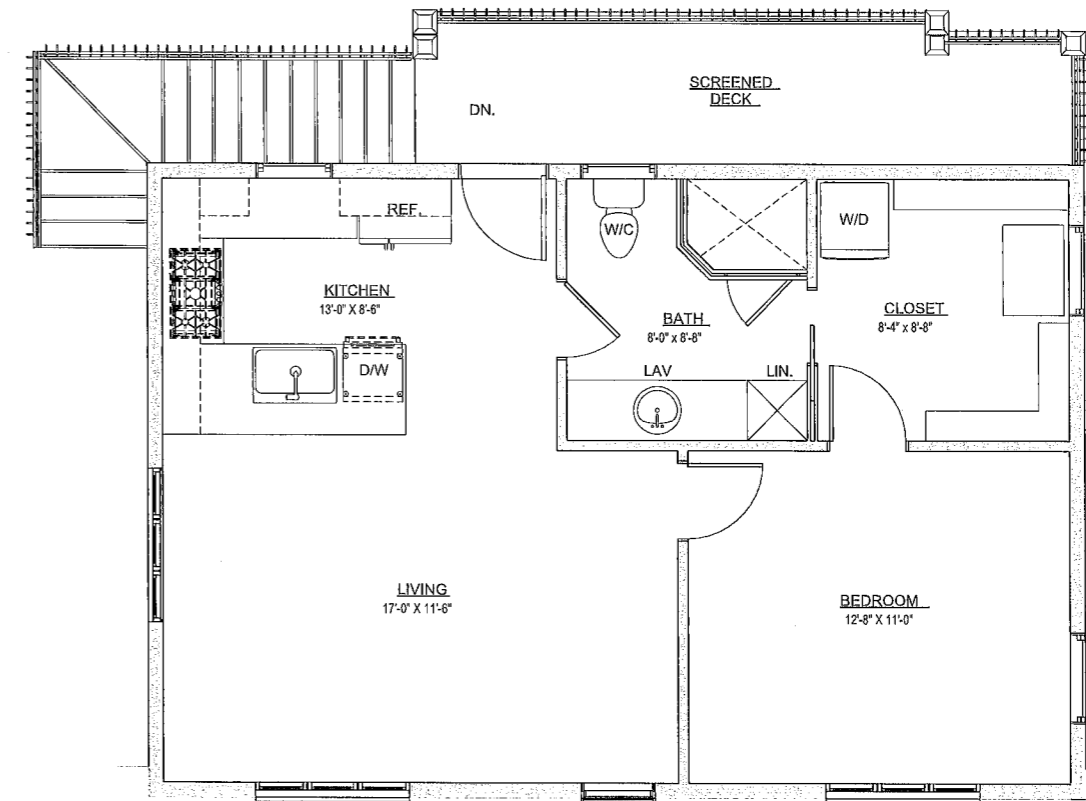
Apartments - Main Floor & Upper Floor

Interior Dry wall to be textured to resemble Building #2 Plaster



1 PRELIM MAIN FLOOR PLAN
1/4" = 1'-0"

New Porch with floor ↓



2 PRELIM UPPER FLOOR PLAN
1/4" = 1'-0"

Apartments - Front Elevation

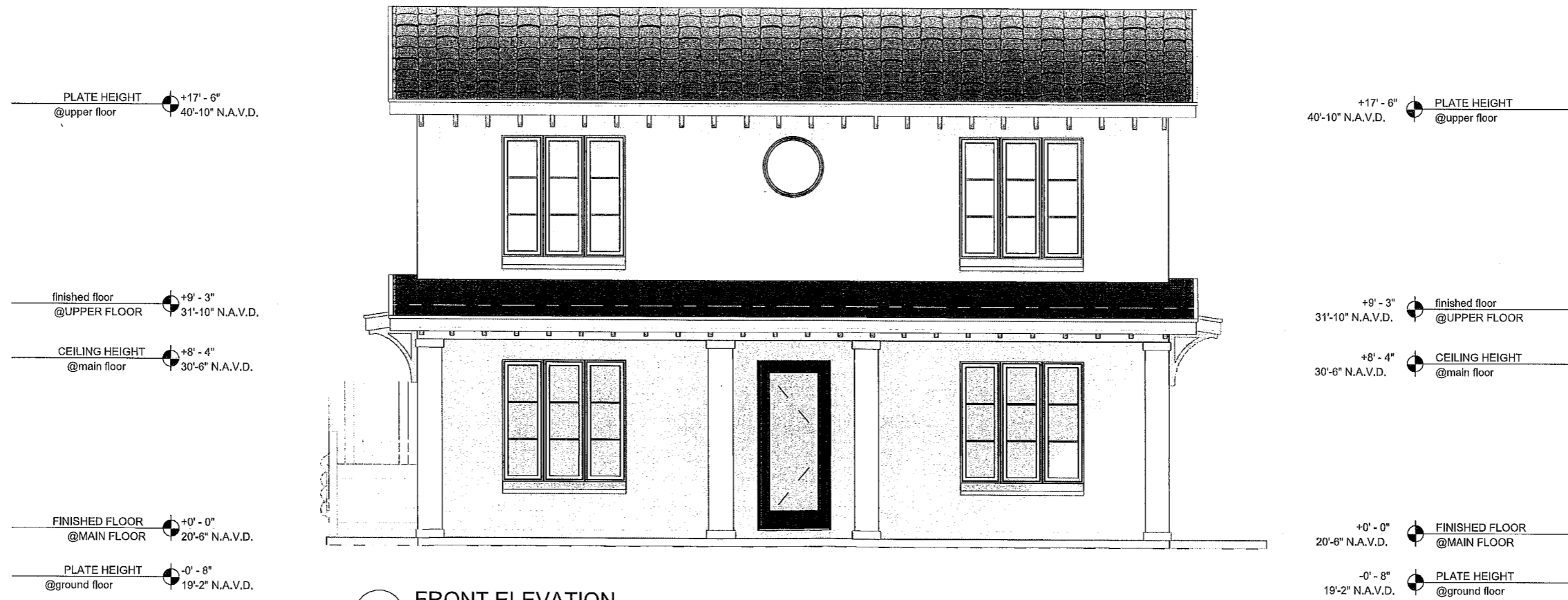


PLATE HEIGHT @upper floor +17' - 6" 40'-10" N.A.V.D.

finished floor @UPPER FLOOR +9' - 3" 31'-10" N.A.V.D.

CEILING HEIGHT @main floor +8' - 4" 30'-6" N.A.V.D.

FINISHED FLOOR @MAIN FLOOR +0' - 0" 20'-6" N.A.V.D.

PLATE HEIGHT @ground floor -0' - 8" 19'-2" N.A.V.D.

+17' - 6" PLATE HEIGHT @upper floor 40'-10" N.A.V.D.

+9' - 3" finished floor @UPPER FLOOR 31'-10" N.A.V.D.

+8' - 4" CEILING HEIGHT @main floor 30'-6" N.A.V.D.

+0' - 0" FINISHED FLOOR @MAIN FLOOR 20'-6" N.A.V.D.

-0' - 8" PLATE HEIGHT @ground floor 19'-2" N.A.V.D.

3 FRONT ELEVATION

3/16" = 1'-0"

Apartments - Rear Elevation

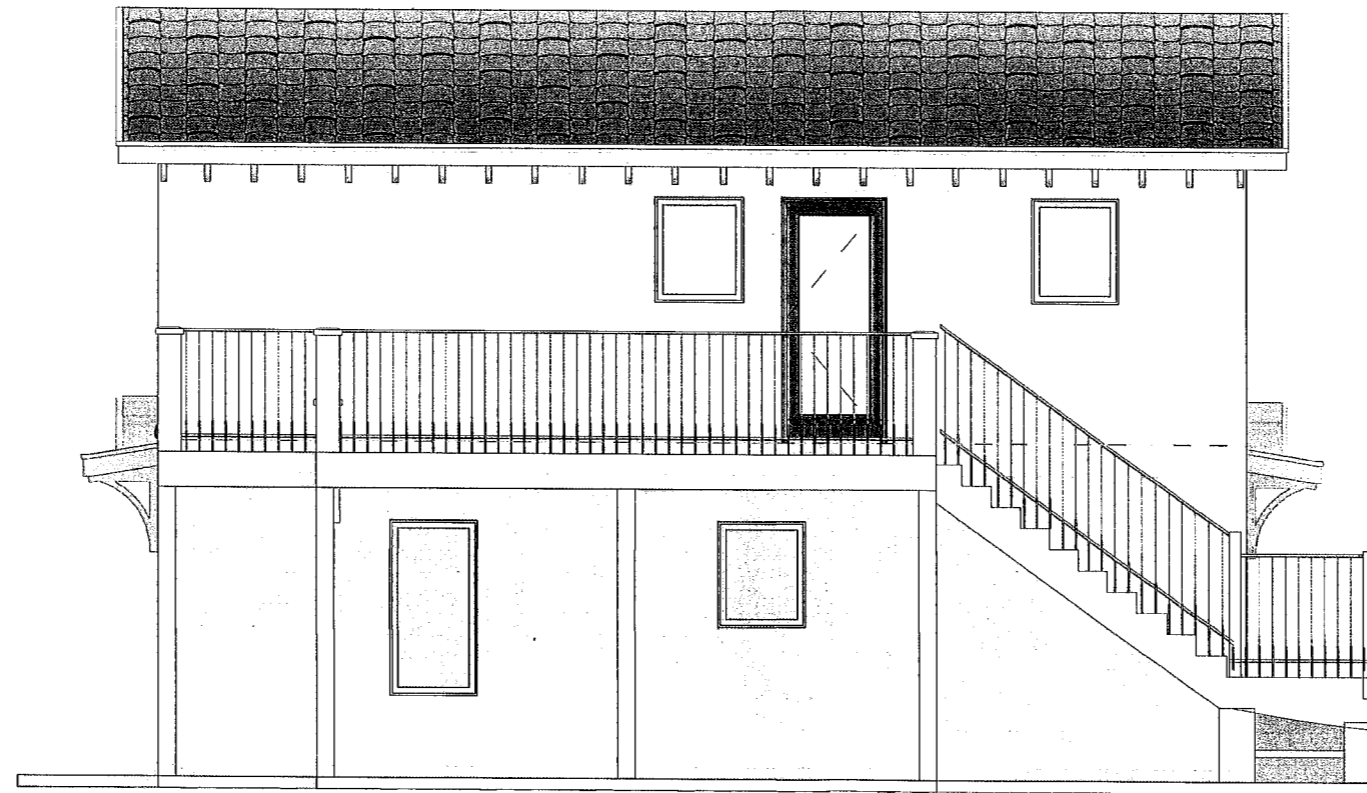
PLATE HEIGHT @upper floor +17' - 6"
40'-10" N.A.V.D.

finished floor @UPPER FLOOR +9' - 3"
31'-10" N.A.V.D.

CEILING HEIGHT @main floor +8' - 4"
30'-6" N.A.V.D.

FINISHED FLOOR @MAIN FLOOR +0' - 0"
20'-6" N.A.V.D.

PLATE HEIGHT @ground floor -0' - 8"
19'-2" N.A.V.D.



+17' - 6" PLATE HEIGHT @upper floor
40'-10" N.A.V.D.

+9' - 3" finished floor @UPPER FLOOR
31'-10" N.A.V.D.

+8' - 4" CEILING HEIGHT @main floor
30'-6" N.A.V.D.

+0' - 0" FINISHED FLOOR @MAIN FLOOR
20'-6" N.A.V.D.

-0' - 8" PLATE HEIGHT @ground floor
19'-2" N.A.V.D.

1 REAR ELEVATION
3/16" = 1'-0"

Apartments - Left Elevation

PLATE HEIGHT @upper floor +17' - 6"
40'-10" N.A.V.D.

finished floor @UPPER FLOOR +9' - 3"
31'-10" N.A.V.D.

CEILING HEIGHT @main floor +8' - 4"
30'-6" N.A.V.D.

FINISHED FLOOR @MAIN FLOOR +0' - 0"
20'-6" N.A.V.D.

PLATE HEIGHT @ground floor -0' - 8"
19'-2" N.A.V.D.



+17' - 6" PLATE HEIGHT @upper floor
40'-10" N.A.V.D.

+9' - 3" finished floor @UPPER FLOOR
31'-10" N.A.V.D.

+8' - 4" CEILING HEIGHT @main floor
30'-6" N.A.V.D.

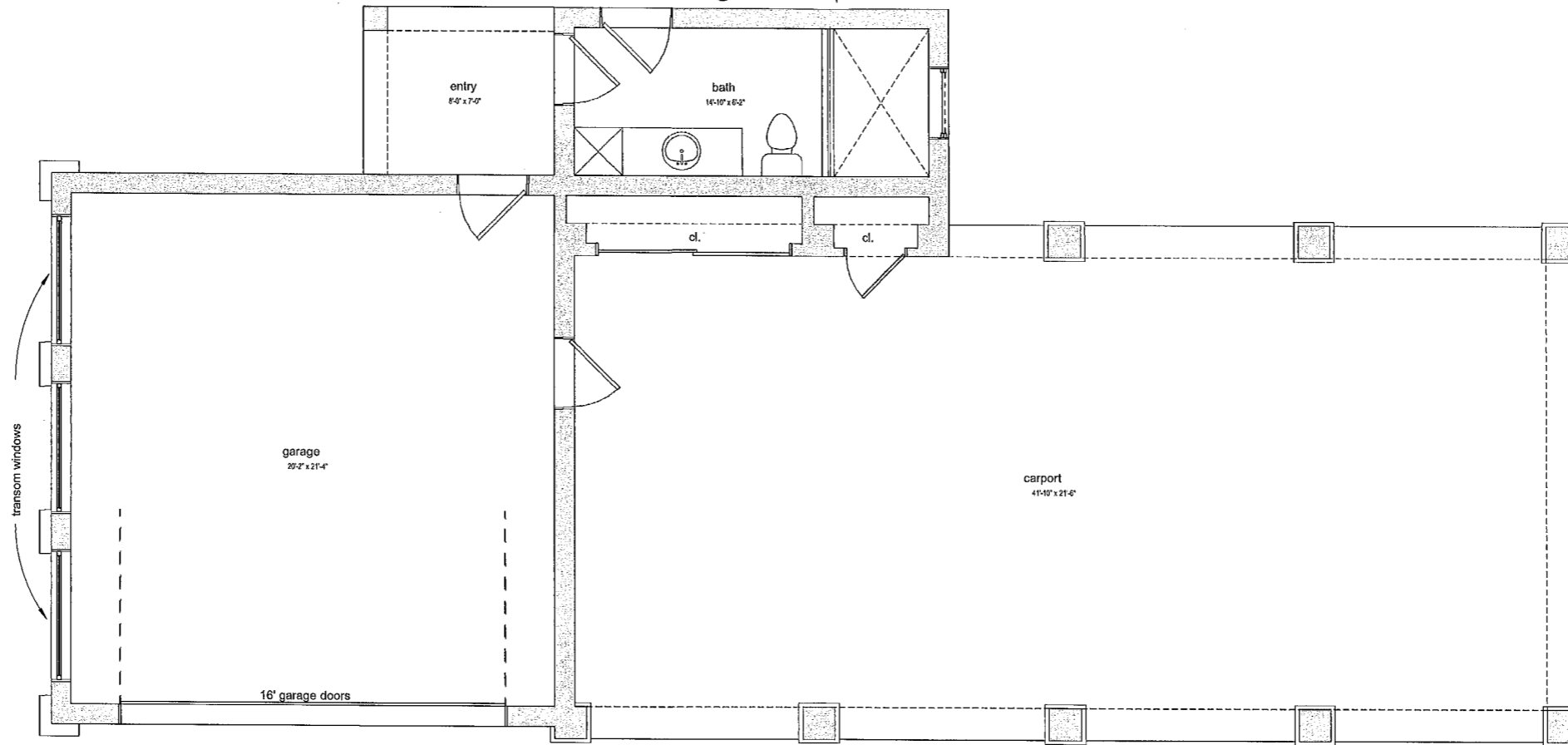
+0' - 0" FINISHED FLOOR @MAIN FLOOR
20'-6" N.A.V.D.

-0' - 8" PLATE HEIGHT @ground floor
19'-2" N.A.V.D.

4 LEFT ELEVATION

3/16" = 1'-0"

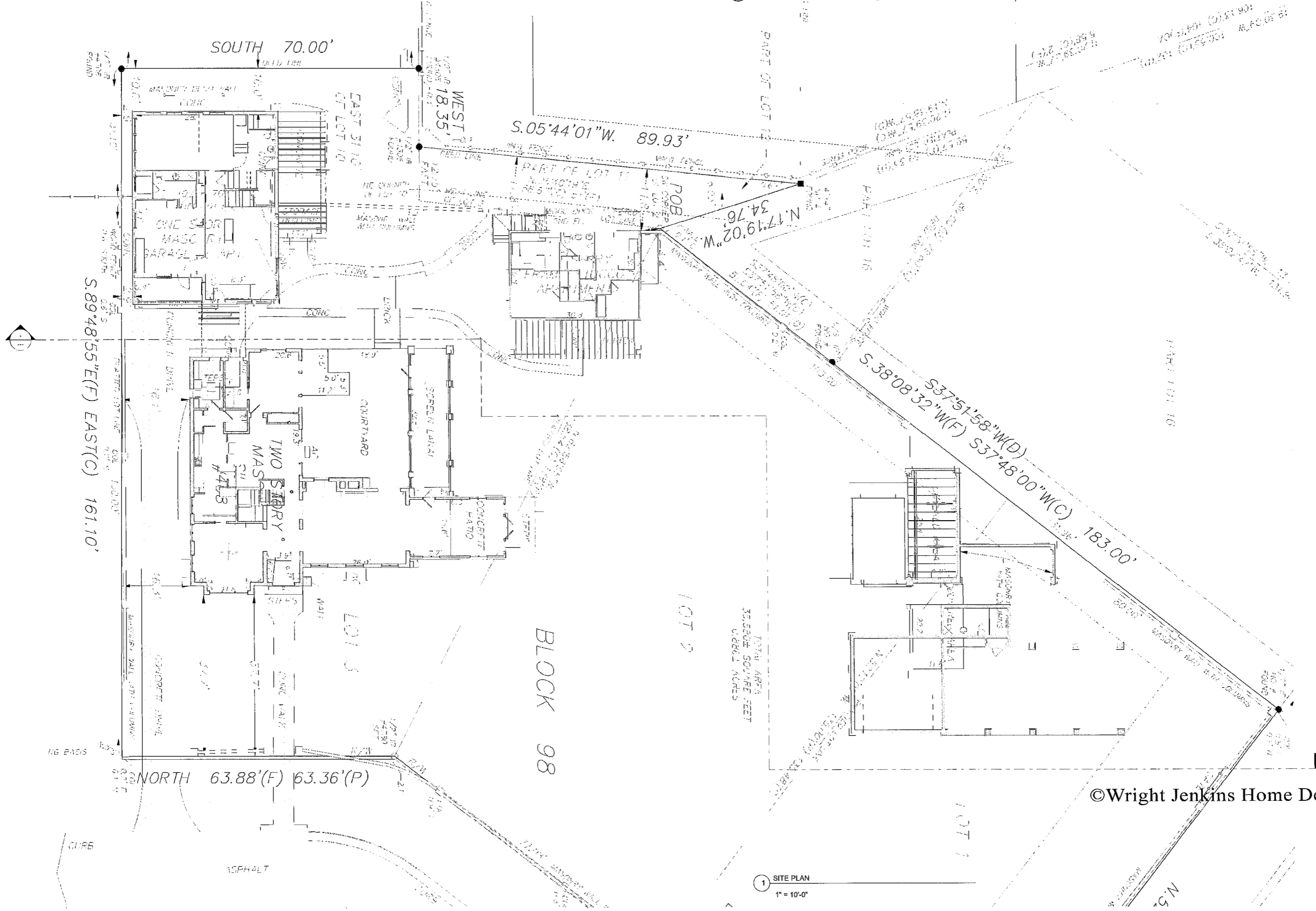
Carport - Plan
New construction garage / car port
Building #4



1 MAIN FLOOR CALLOUT PLAN

1/4" = 1'-0"

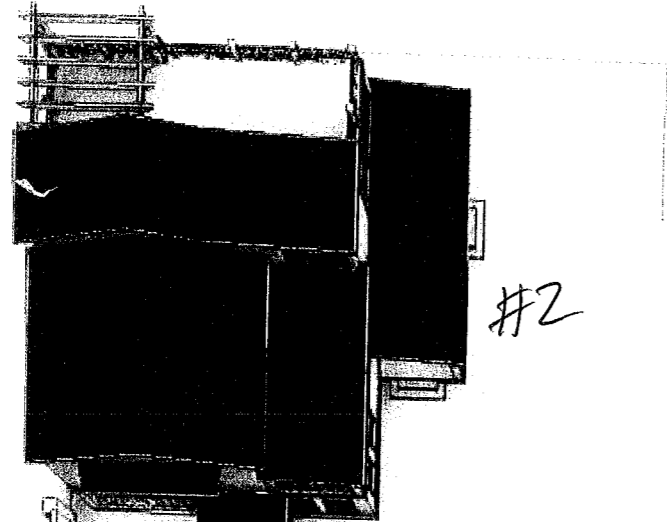
Site Plan w/Existing Overlay



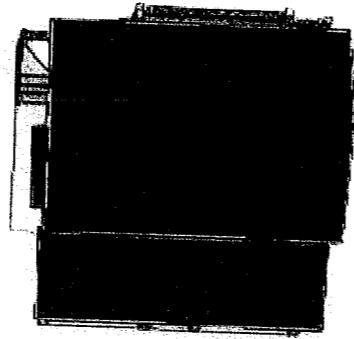
©Wright Jenkins Home Design

1 SITE PLAN
1" = 10'-0"

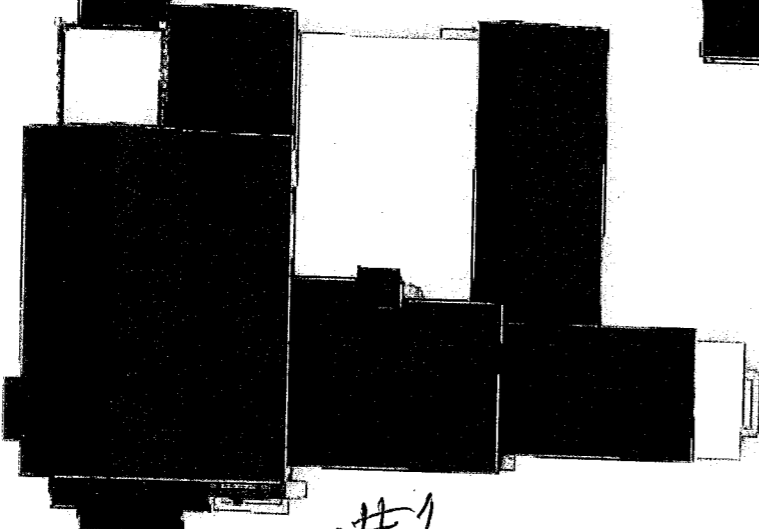
Site Aerial



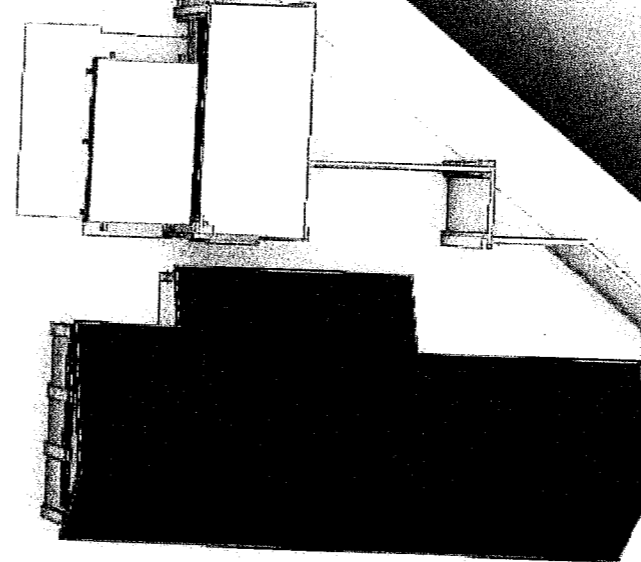
#2



#3



#1



#4

3D Link

<https://autode.sk/3M8laLU>