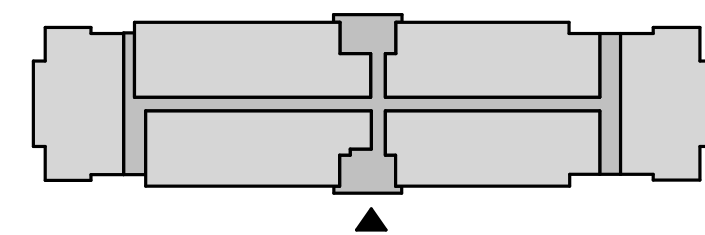
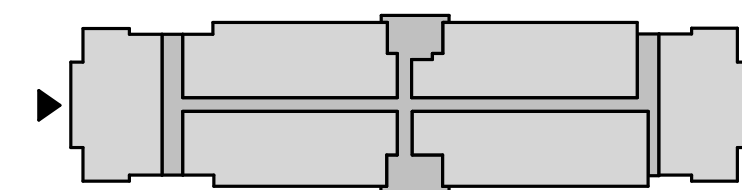


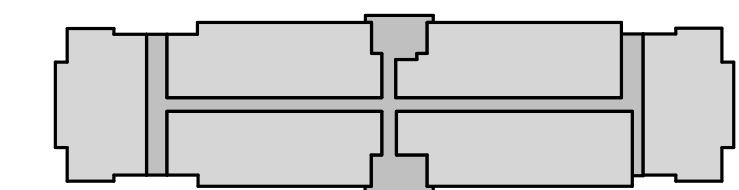
1 REAR ELEVATION
1" = 10'-0"



3 LEFT ELEVATION
1" = 10'-0"



2 RIGHT ELEVATION
1" = 10'-0"



<p>STUCCO #1 SHERWIN WILLIAMS COLOR: HONEYPOT SW 9663</p>
<p>STUCCO #2 SHERWIN WILLIAMS COLOR: FAWN BRINDLE SW 7640</p>
<p>TRIM SHERWIN WILLIAMS COLOR: WHITE SNOW SW 9541</p>
<p>BRICK #1 SOUTH ALABAMA BRICK CO. TAYLOR CLAY COMM. COLLECTION COLOR: PEARL GRAY</p>
<p>BRICK #2 SOUTH ALABAMA BRICK CO. TAYLOR CLAY COMM. COLLECTION COLOR: AUTUMN BLEND 372</p>
<p>LAP SIDING JAMES HARDIE - HARDIE PLANK COLOR: SWEETWATER</p>
<p>ASHPALT SHINGLE OWENS CORNING DURATION COLOR: TERRA COTTA</p>

MATERIALS AND COLOR SELECTION REPRESENT THE BASIS OF DESIGN AND NOT NECESSARILY THE FINAL PRODUCT CHOICE. ARCHITECT AND OWNER TO REVIEW AND APPROVE MATERIAL SAMPLES.

NOT FOR CONSTRUCTION

STAMP:
CLIENT:
CSP APARTMENTS
64 COMMERCIAL ST., STE 401
ROCHESTER, NY 14614

Passero Associates
4730 CASA COLA WAY, SUITE 200 (904) 757-6106
ST. AUGUSTINE, FL 32092

PROJECT MANAGER: J. WHITE, J. VOLLENWEIDER
PROJECT ARCHITECT: JAMES LENK
DESIGNER: AP, CC, KK, MC

NO.	DATE	BY	DESCRIPTION

UNAUTHORIZED ALTERATIONS OR ADDITIONS TO THIS DRAWING IS IN VIOLATION OF STATE EDUCATION LAW ARTICLE 145 SECTION 7209 AND ARTICLE 147 SECTION 7307, THESE PLANS ARE COPYRIGHT PROTECTED. ©

EXTERIOR ELEVATIONS

KNIGHTS TRAIL RD

KNIGHTS TRAIL APARTMENTS

TOWN/CITY: NOKOMIS
COUNTY: SARASOTA STATE: FL

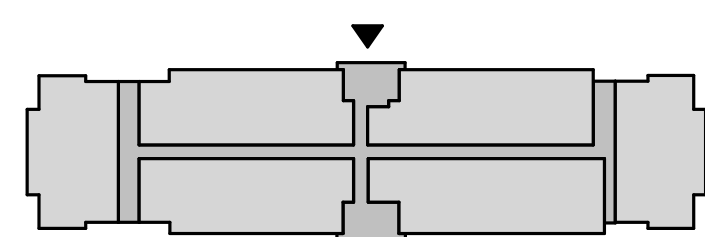
PROJECT NO.:
20213179.0001

DRAWING NO.:
A-200

DATE:
AUGUST 04, 2022

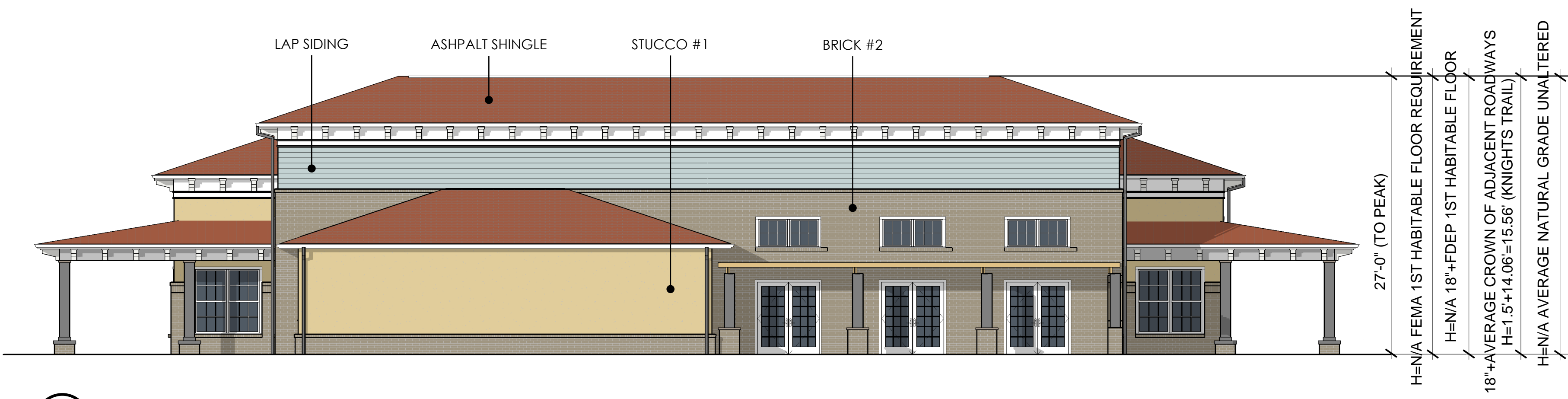


1 FRONT ELEVATION
1" = 10'-0"



- STUCCO #1**
 SHERWIN WILLIAMS
 COLOR: HONEYPOT
 SW 9663
- STUCCO #2**
 SHERWIN WILLIAMS
 COLOR: FAWN BRINDLE
 SW 7640
- TRIM**
 SHERWIN WILLIAMS
 COLOR: WHITE SNOW
 SW 9541
- BRICK #1**
 SOUTH ALABAMA BRICK CO.
 TAYLOR CLAY COMM. COLLECTION
 COLOR: PEARL GRAY
- BRICK #2**
 SOUTH ALABAMA BRICK CO.
 TAYLOR CLAY COMM. COLLECTION
 COLOR: AUTUMN BLEND 372
- LAP SIDING**
 JAMES HARDIE - HARDIE PLANK
 COLOR: SWEETWATER
- ASHPALT SHINGLE**
 OWENS CORNING DURATION
 COLOR: TERRA COTTA

MATERIALS AND COLOR SELECTION REPRESENT THE BASIS OF DESIGN AND NOT NECESSARILY THE FINAL PRODUCT CHOICE. ARCHITECT AND OWNER TO REVIEW AND APPROVE MATERIAL SAMPLES.



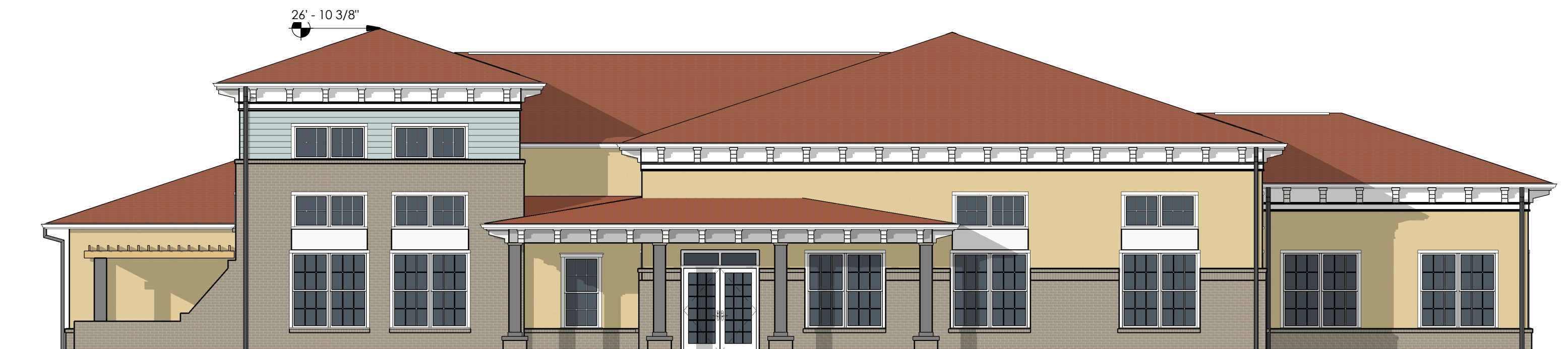
4 CLUBHOUSE RIGHT ELEVATION
 0' 2' 4' 8' 16'
 1/8" = 1'-0"



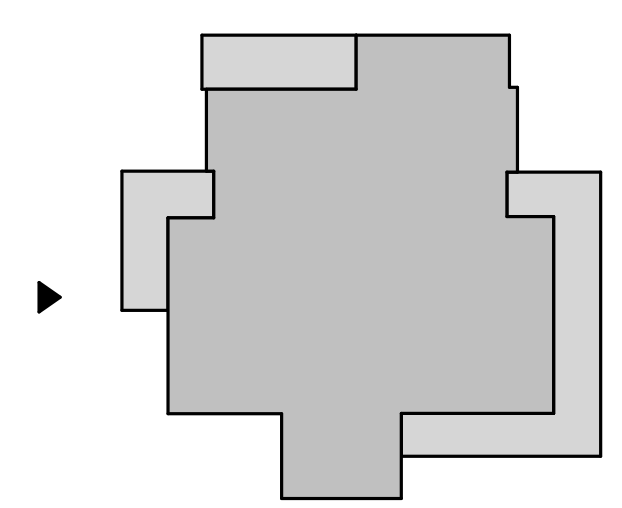
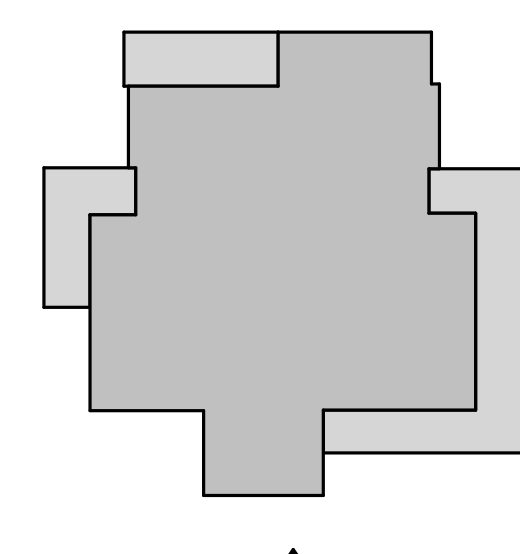
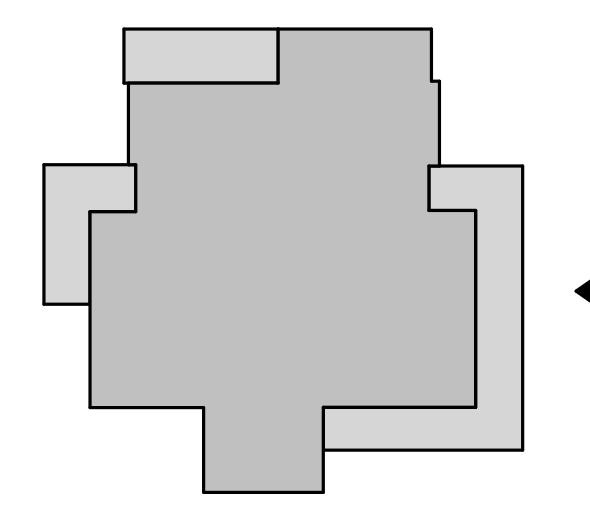
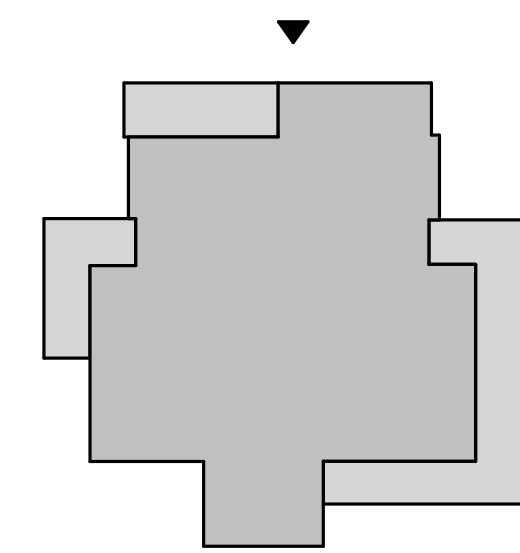
3 CLUBHOUSE REAR ELEVATION
 0' 2' 4' 8' 16'
 1/8" = 1'-0"



2 CLUBHOUSE LEFT ELEVATION
 0' 2' 4' 8' 16'
 1/8" = 1'-0"



1 CLUBHOUSE FRONT ELEVATION
 0' 2' 4' 8' 16'
 1/8" = 1'-0"



CLUBHOUSE - DD PROGRESS SET

NOT FOR CONSTRUCTION

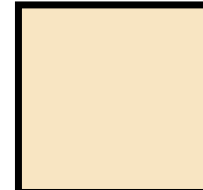


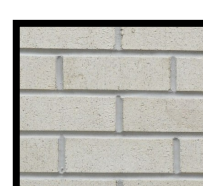
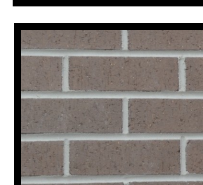

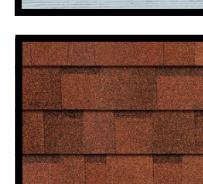
CLIENT:
 CSP APARTMENTS
 64 COMMERCIAL ST., STE 401
 ROCHESTER, NY 14614

Passero Associates
 4730 CASA COLA WAY, SUITE 200 (904) 757-6106
 ST. AUGUSTINE, FL 32095
 PROJECT MANAGER: J. WHITE, J. VOLLENWEIDER
 PROJECT ARCHITECT: JAMES LENK
 DESIGNER: AP, CC, KK, MC

NO.	DATE	BY	DESCRIPTION

UNAUTHORIZED ALTERATIONS OR ADDITIONS TO THIS DRAWING IS IN VIOLATION OF STATE EDUCATION LAW ARTICLE 145 SECTION 7209 AND ARTICLE 147 SECTION 7307, THESE PLANS ARE COPYRIGHT PROTECTED. ©

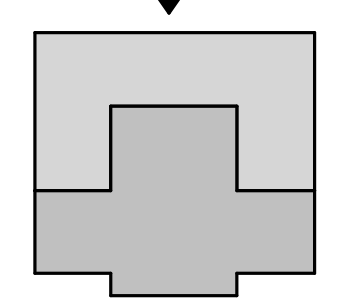
EXTERIOR ELEVATIONS - CLUBHOUSE
 KNIGHTS TRAIL RD
 KNIGHTS TRAIL - AMENITIES
 TOWN/CITY: NOKOMIS
 COUNTY: SARASOTA STATE: FL
 PROJECT NO.: 20213179.0001
 DRAWING NO.: AB-200
 DATE: AUGUST XX, 2022

	STUCCO #1 SHERWIN WILLIAMS COLOR: HONEYPOT SW 9663
	STUCCO #2 SHERWIN WILLIAMS COLOR: FAWN BRINDLE SW 7640
	TRIM SHERWIN WILLIAMS COLOR: WHITE SNOW SW 9541
	BRICK #1 SOUTH ALABAMA BRICK CO. TAYLOR CLAY COMM. COLLECTION COLOR: PEARL GRAY
	BRICK #2 SOUTH ALABAMA BRICK CO. TAYLOR CLAY COMM. COLLECTION COLOR: AUTUMN BLEND 372
	LAP SIDING JAMES HARDIE - HARDIE PLANK COLOR: SWEETWATER
	ASHPALT SHINGLE OWENS CORNING DURATION COLOR: TERRA COTTA

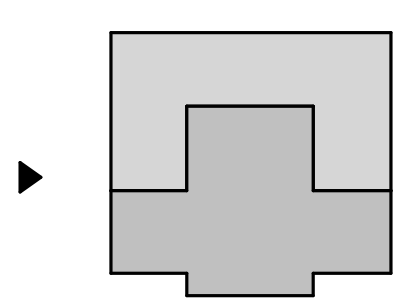
MATERIALS AND COLOR SELECTION REPRESENT THE BASIS OF DESIGN AND NOT NECESSARILY THE FINAL PRODUCT CHOICE. ARCHITECT AND OWNER TO REVIEW AND APPROVE MATERIAL SAMPLES.



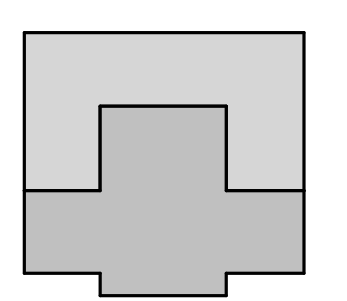
1 POOL BUILDING FRONT ELEVATION
0' 2' 4' 8' 16'
1/8" = 1'-0"



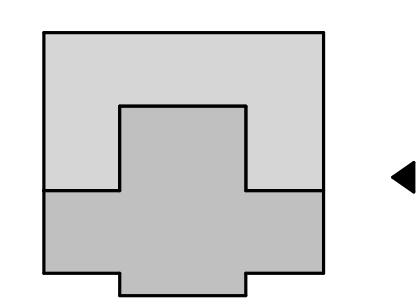
2 POOL BUILDING RIGHT ELEVATION
0' 2' 4' 8' 16'
1/8" = 1'-0"



3 POOL BUILDING REAR ELEVATION
0' 2' 4' 8' 16'
1/8" = 1'-0"



4 POOL BUILDING LEFT ELEVATION
0' 2' 4' 8' 16'
1/8" = 1'-0"



CLUBHOUSE - DD PROGRESS SET

NOT FOR CONSTRUCTION

CLIENT:
CSP APARTMENTS
64 COMMERCIAL ST., STE 401
ROCHESTER, NY 14614

Passero Associates
4730 CASA COLA WAY, SUITE 200 (904) 757-6106
ST. AUGUSTINE, FL 32095

PROJECT MANAGER: J. WHITE, J. VOLLENWEIDER
PROJECT ARCHITECT: JAMES LENK
DESIGNER: AP, CC, KK, MC

NO.	DATE	BY	DESCRIPTION

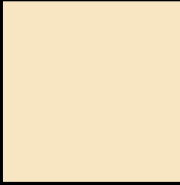


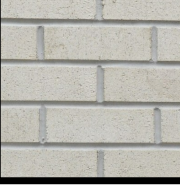



UNAUTHORIZED ALTERATIONS OR ADDITIONS TO THIS DRAWING IS IN VIOLATION OF STATE EDUCATION LAW ARTICLE 545 SECTION 7209 AND ARTICLE 147 SECTION 7307, THESE PLANS ARE COPYRIGHT PROTECTED. ©

ELEVATIONS & SECTIONS - POOL BUILDING
KNIGHTS TRAIL RD
KNIGHTS TRAIL - AMENITIES
TOWN/CITY: NOKOMIS
COUNTY: SARASOTA STATE: FL

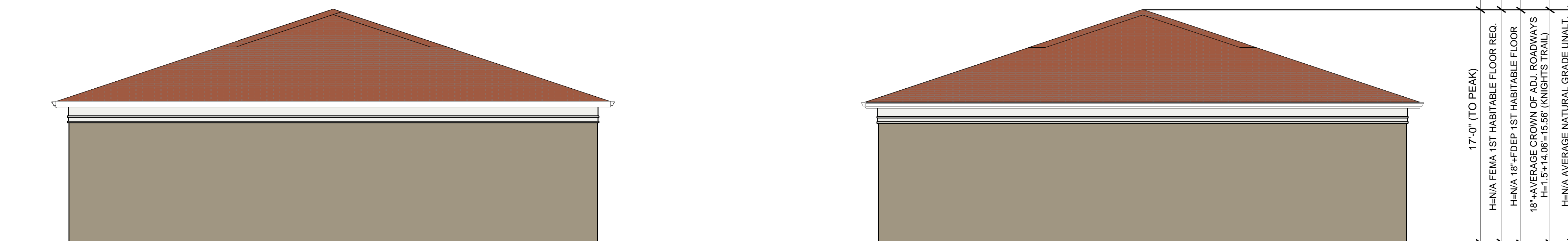
PROJECT NO.: 20213179.0001

DRAWING NO.: AC-101

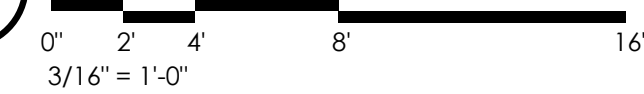
DATE: AUGUST XX, 2022

	STUCCO #1 SHERWIN WILLIAMS COLOR: HONEYPOT SW 9663
	STUCCO #2 SHERWIN WILLIAMS COLOR: FAWN BRINDLE SW 7640
	TRIM SHERWIN WILLIAMS COLOR: WHITE SNOW SW 9541
	BRICK #1 SOUTH ALABAMA BRICK CO. TAYLOR CLAY COMM. COLLECTION COLOR: PEARL GRAY
	BRICK #2 SOUTH ALABAMA BRICK CO. TAYLOR CLAY COMM. COLLECTION COLOR: AUTUMN BLEND 372
	LAP SIDING JAMES HARDIE - HARDIE PLANK COLOR: SWEETWATER
	ASHPALT SHINGLE OWENS CORNING DURATION COLOR: TERRA COTTA

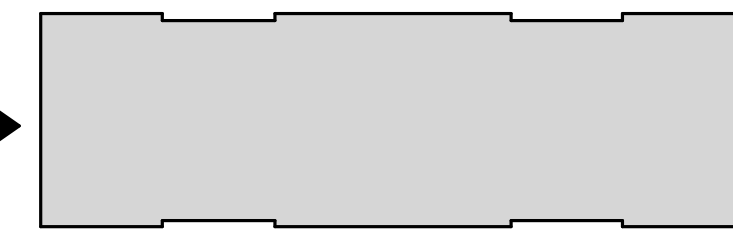
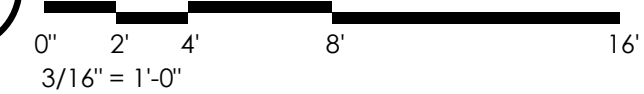
MATERIALS AND COLOR SELECTION REPRESENT THE BASIS OF DESIGN AND NOT NECESSARILY THE FINAL PRODUCT CHOICE. ARCHITECT AND OWNER TO REVIEW AND APPROVE MATERIAL SAMPLES.



3 DOUBLE GARAGE - RIGHT ELEVATION



2 DOUBLE GARAGE - LEFT ELEVATION



NOT FOR CONSTRUCTION

CLIENT:
CSP APARTMENTS
64 COMMERCIAL ST., STE 401
ROCHESTER, NY 14614

Passero Associates

4730 CASA COLA WAY, SUITE 200 (904) 757-6106
ST. AUGUSTINE, FL 32095
PROJECT MANAGER: J. WHITE, J. VOLLENWEIDER
PROJECT ARCHITECT: JAMES LENK
DESIGNER: AP, CC, KK, MC

NO.	DATE	BY	DESCRIPTION

UNAUTHORIZED ALTERATIONS OR ADDITIONS TO THIS DRAWING IS IN VIOLATION OF STATE EDUCATION LAW ARTICLE 545 SECTION 7209 AND ARTICLE 147 SECTION 7307, THESE PLANS ARE COPYRIGHT PROTECTED. ©

EXTERIOR ELEVATIONS - DOUBLE GARAGE
KNIGHTS TRAIL RD

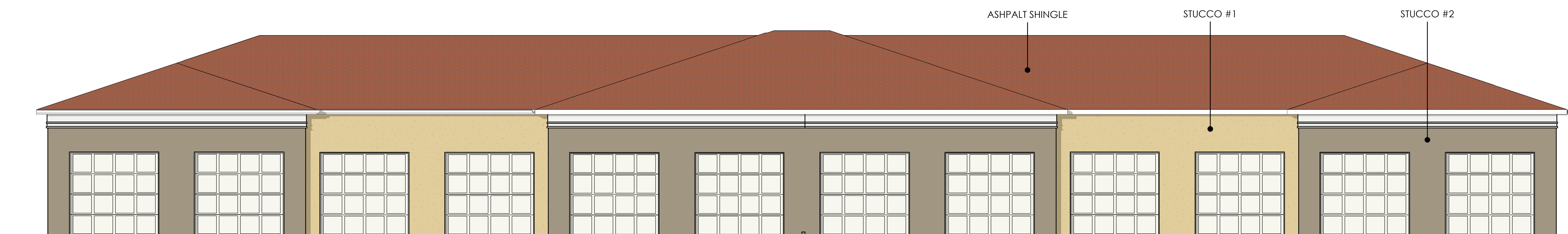
KNIGHTS TRAIL - GARAGES

TOWN/CITY: NOKOMIS
COUNTY: SARASOTA STATE: FL

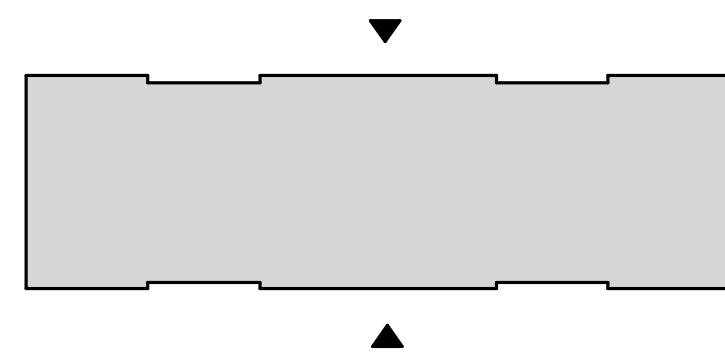
PROJECT NO.: 20213179.0001

DRAWING NO.: AD-200

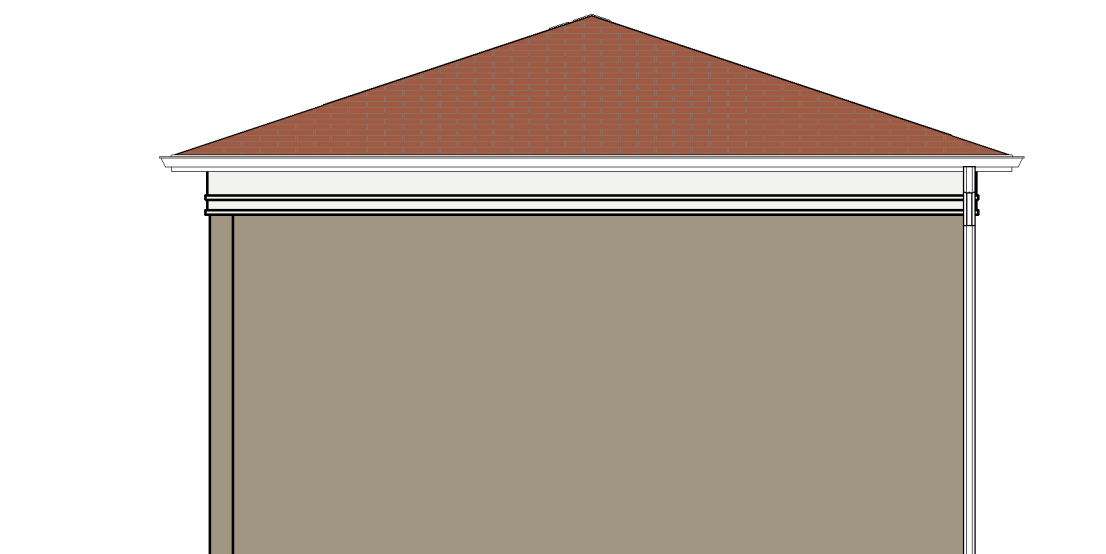
DATE: AUGUST 4, 2022



1 DOUBLE GARAGE FRONT/REAR ELEVATION

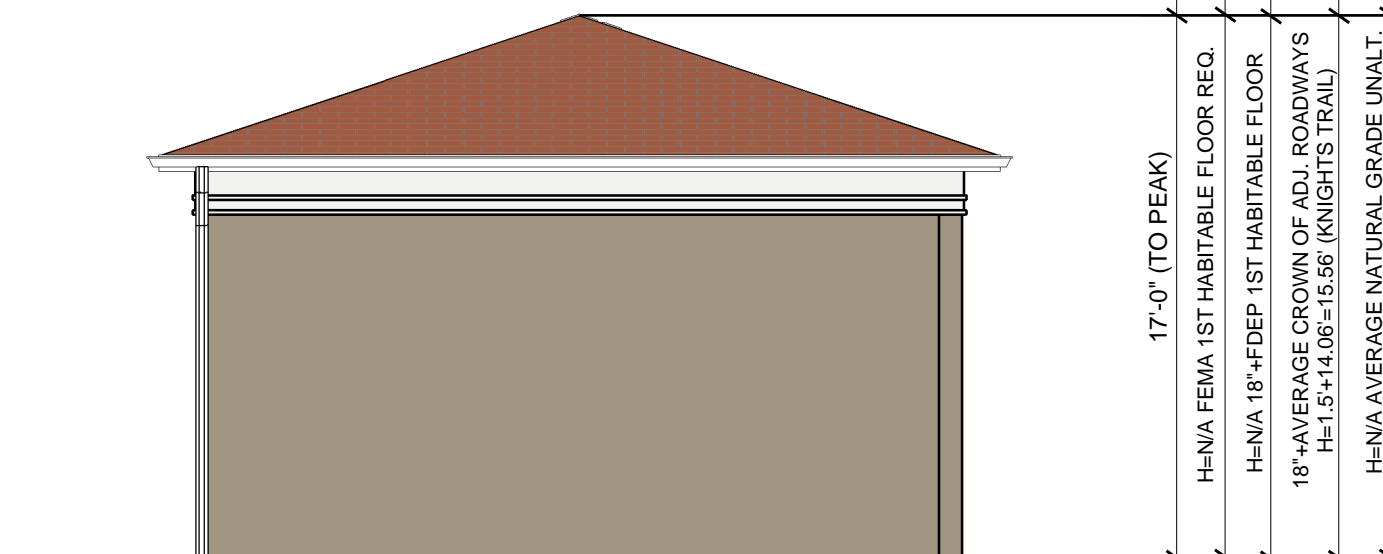


GARAGES - DD PROGRESS SET



4 SINGLE GARAGE - LEFT ELEVATION

0' 2' 4' 8' 16'
3/16" = 1'-0"

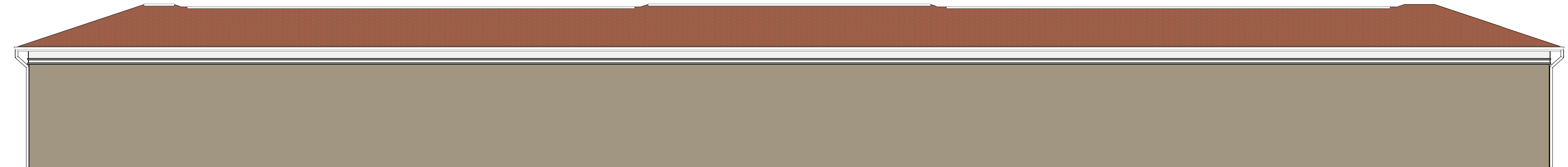


3 SINGLE GARAGE - RIGHT ELEVATION

0' 2' 4' 8' 16'
3/16" = 1'-0"

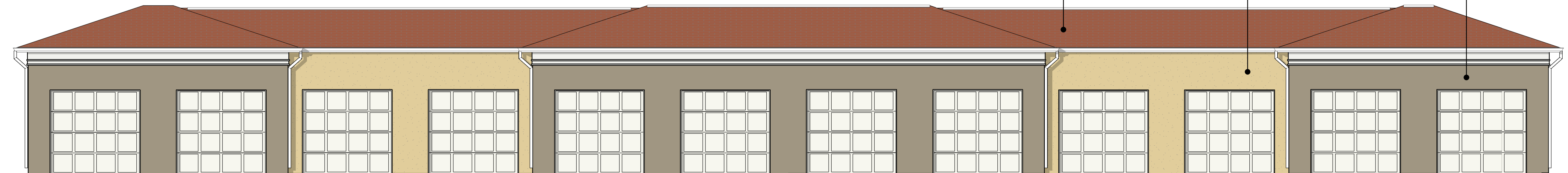
- STUCCO #1**
 SHERWIN WILLIAMS
 COLOR: HONEYPOT
 SW 9663
- STUCCO #2**
 SHERWIN WILLIAMS
 COLOR: FAWN BRINDLE
 SW 7640
- TRIM**
 SHERWIN WILLIAMS
 COLOR: WHITE SNOW
 SW 9541
- BRICK #1**
 SOUTH ALABAMA BRICK CO.
 TAYLOR CLAY COMM. COLLECTION
 COLOR: PEARL GRAY
- BRICK #2**
 SOUTH ALABAMA BRICK CO.
 TAYLOR CLAY COMM. COLLECTION
 COLOR: AUTUMN BLEND 372
- LAP SIDING**
 JAMES HARDIE - HARDIE PLANK
 COLOR: SWEETWATER
- ASHPALT SHINGLE**
 OWENS CORNING DURATION
 COLOR: TERRA COTTA

MATERIALS AND COLOR SELECTION REPRESENT THE BASIS OF DESIGN AND NOT NECESSARILY THE FINAL PRODUCT CHOICE. ARCHITECT AND OWNER TO REVIEW AND APPROVE MATERIAL SAMPLES.



2 SINGLE GARAGE - REAR ELEVATION

0' 2' 4' 8' 16'
3/16" = 1'-0"



1 SINGLE GARAGE - FRONT ELEVATION

0' 2' 4' 8' 16'
3/16" = 1'-0"

GARAGES - DD PROGRESS SET

NOT FOR CONSTRUCTION

CLIENT:
CSP APARTMENTS
64 COMMERCIAL ST., STE 401
ROCHESTER, NY 14614

Passero Associates
4730 CASA COLA WAY, SUITE 200 (904) 757-6106
ST. AUGUSTINE, FL 32092

PROJECT MANAGER: J. WHITE, J. VOLLENWEIDER
PROJECT ARCHITECT: JAMES LENK
DESIGNER: AP, CC, KK, MC

NO.	DATE	BY	DESCRIPTION

UNAUTHORIZED ALTERATIONS OR ADDITIONS TO THIS DRAWING IS IN VIOLATION OF STATE EDUCATION LAW ARTICLE 545 SECTION 7209 AND ARTICLE 147 SECTION 7307, THESE PLANS ARE COPYRIGHT PROTECTED. ©

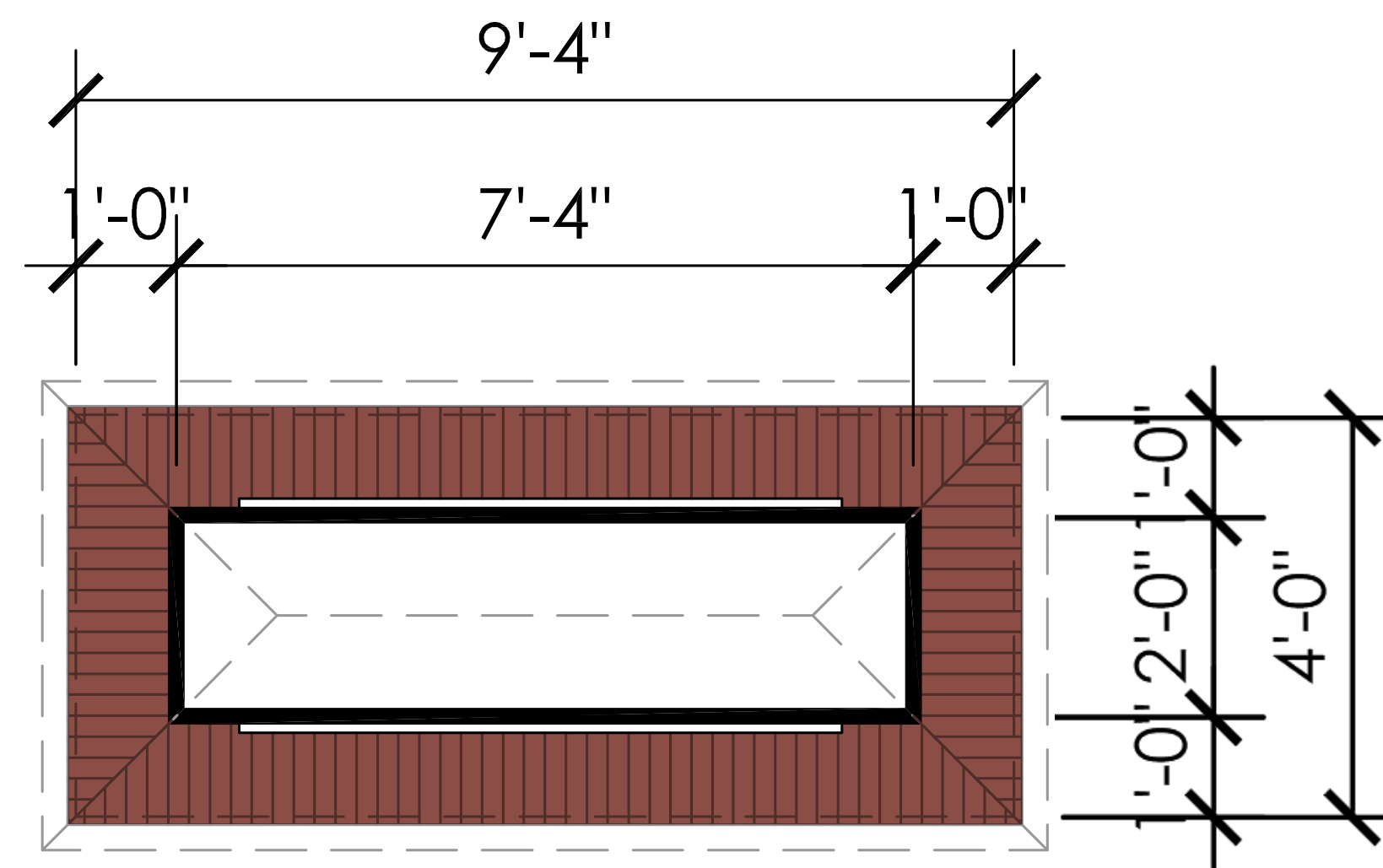
EXTERIOR ELEVATIONS - SINGLE GARAGE
KNIGHTS TRAIL RD
KNIGHTS TRAIL - GARAGES
TOWN/CITY: NOKOMIS STATE: FL
COUNTY: SARASOTA
PROJECT NO.: 20213179.0001
DRAWING NO.: AD-201
DATE: AUGUST 4, 2022

RUSTIC ROAD

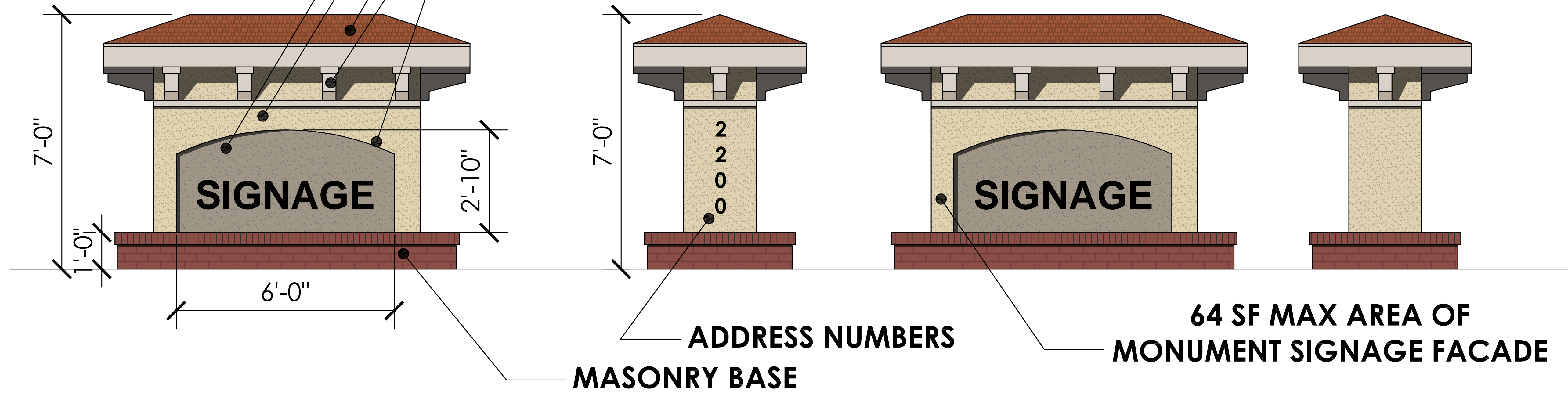
FUTURE COMMERCIAL

FUTURE COMMERCIAL

KNIGHTS TRAIL ROAD



- STUCCO 1
- STUCCO 2
- ARCH. SHINGLE ROOF
- DECORATIVE BRACKETS
- MAX 16 SF SIGNAGE AREA



SITE MONUMENT SIGNAGE