

PRE-ANNEXATION AGREEMENT LANGUAGE

JAVIER VARGAS, UTILITIES DIRECTOR

PATIENCE ANASTASIO, ASSISTANT UTILITIES DIRECTOR

SEPTEMBER 12, 2023



INFRASTRUCTURE DEFINITIONS

- “**Infrastructure**” means a fixed capital expenditure or fixed capital outlay, excluding the cost of repairs or maintenance, associated with the construction, reconstruction, or improvement of public facilities that have a life expectancy of at least 5 years; related land acquisition, land improvement, design, engineering, and permitting costs; and other related construction costs required to bring the public facility into service. 163.31801 3(a) F.A.C.
- Critical **infrastructure**, including wastewater treatment facilities and lift stations, stormwater treatment facilities and pump stations, drinking water facilities, water utility conveyance systems, electric production and supply facilities, solid and hazardous waste facilities, military installations, communications facilities, and disaster debris management sites. 380.093(2)(a)2., F.S.
- Utility **infrastructure**, including wastewater treatment plants, substations, lift stations, solid and hazardous waste facilities, utility lines (including transmission and distribution), poles, towers, support structures, cables, conduits, outfalls, intake structures, and pipelines; DEP 16-0112.
- Water, wastewater and reclaimed water **infrastructure** includes all drinking water systems and wastewater/reclaimed water management systems to supply, treat, collect, transport, store, or supply utilities services to a community. Typical utilities **infrastructure** components include water/sewer/reclaimed piping, water/sewer/reclaimed valve assemblies, hydrants, service lines, blow-offs, backflow assemblies, manholes, manhole covers, laterals, force mains, lift stations, and vacuum stations.

INFRASTRUCTURE COMPONENTS

PIPING

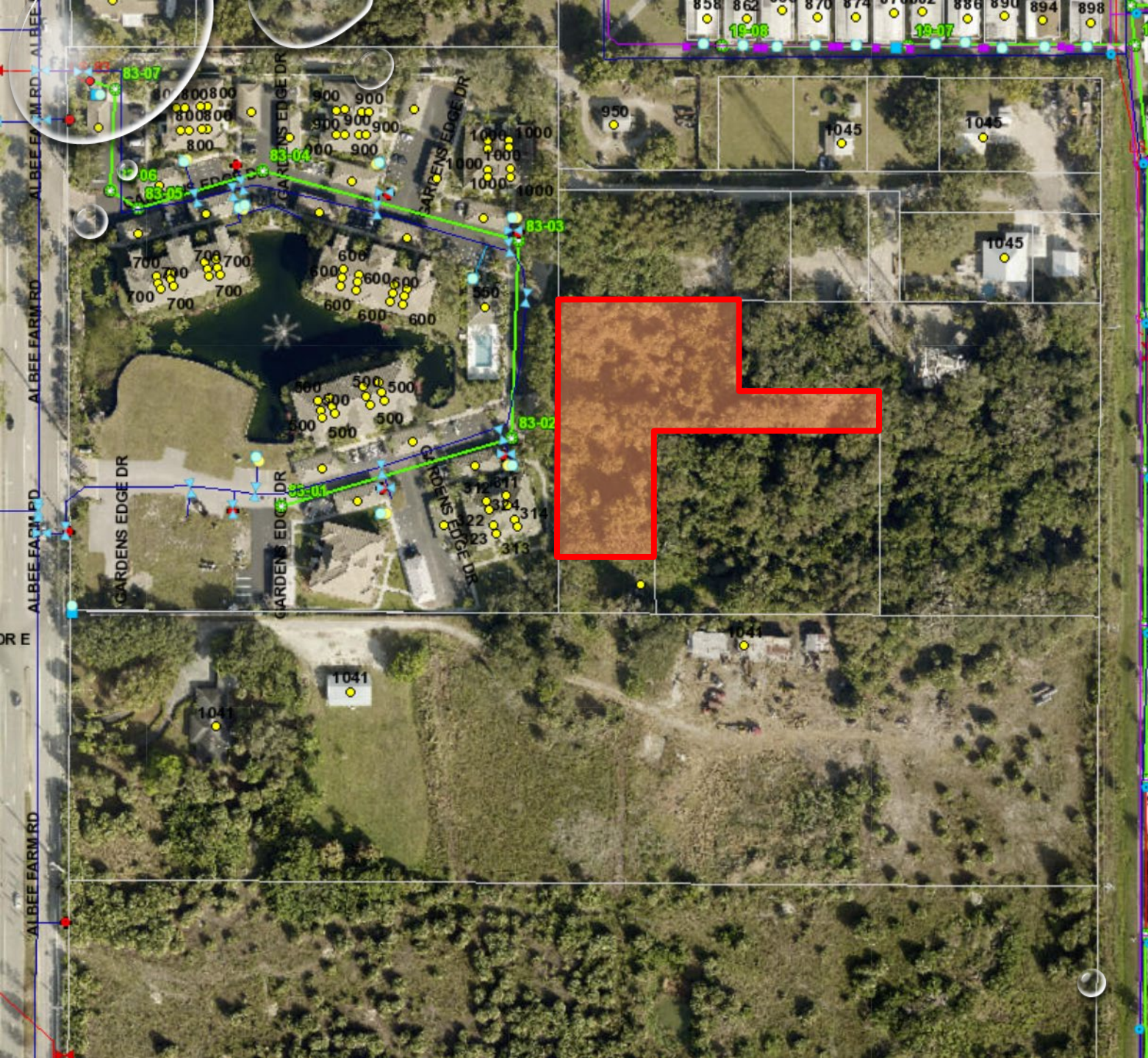
Potable/Reclaimed Water Mains
Potable/Reclaimed Water Services
Sewer Laterals
Gravity Sewers
Sewer Force Mains
*Manholes
*Fittings
*Valves

LIFT STATIONS

Submersible Pumps
Wet Wells
Valve Vault
Valve Assemblies
Instrumentation
Control Panel
Emergency Generator
Diesel Pumps
Flow Meters
Antenna (RTU)
Variable Frequency Drives
Floats/Bubbler
Odor Control Unit
Muffin Monster/Grinder
Screening
Stairs
Alarm System
Electrical Transformer
Electrical Service
Isolation Manhole

OTHER

Vacuum Sewer Components
Vacuum Pump Stations
Water Meters
Master Meter Assemblies
Backflow Preventers
Blow off Assemblies
Fire Hydrants
Storage Tanks
Manhole Lining
Pipe Lining
Joint Restraints



PROPOSED PROJECT

- Enclave, not adjacent to existing utilities.
- Existing wastewater service area is at capacity.
- Project timing and site plan

PROPOSED LANGUAGE

5. EXPANSION OF WATER, SEWER AND RECLAIMED WATER UTILITY INFRASTRUCTURE. At the time of development of the Subject Property, the Owner, or its successors and assigns, shall design, construct, and pay for installing, extending, sizing, and upsizing all offsite and onsite potable, wastewater, and reclaimed water systems necessary to serve the full buildout of the project and connections to existing systems. Typical components of these systems include the following:

Utility System	Components
Potable Water	Piping, valve assemblies, hydrants, service lines, blow-offs, backflow assemblies.
Sewer Collection	Piping, manholes, manhole covers, linings, laterals, force mains, valve assemblies, lift stations, vacuum sewer components.
Reclaimed Water	Reclaimed water piping, valves, service lines.

All such work shall be performed in accordance with plans and specifications approved through the City's construction permitting process and in accordance with the current version of the City Code, State Rules and Regulations, Recommended Standards for Wastewater Facilities and Utilities Standard Details.