

RESOLUTION NO. 2021-28

A RESOLUTION OF THE CITY OF VENICE, FLORIDA, REQUESTING SARASOTA COUNTY TO DESIGNATE LAUREL ROAD AS A PRIORITY ROAD PROJECT AND EXPAND AND IMPROVE THE SEGMENT FROM KNIGHTS TRAIL EASTWARD TO JACARANDA BOULEVARD; AND PROVIDING AN EFFECTIVE DATE

WHEREAS, the City of Venice (hereafter referred to as the City) has identified Laurel Road (from Knights Trail eastward to Jacaranda Boulevard) as an important component of the City's northeast vehicle transportation corridor; and

WHEREAS, that segment of Laurel Road provides critical connection to several substantial residential communities, commercial and industrial destinations; Station #53 of the Venice Fire Department, and two heavily used access points to Interstate 75; and

WHEREAS, the continuing rapid development of residential complexes in the northeastern part of Venice has placed increasing demands on the use of Laurel Road, and has led to repeated need for repair; and

WHEREAS, projected residential unit construction and accompanying commercial, institutional and retail growth will place further demands on the capacity of Laurel Road; and

WHEREAS, current and projected development in the northeast corridor includes, but is not limited to a new hospital, retail and commercial outlets, and an estimated 5,000 to 6,000 new homes; and

WHEREAS, the Venice City Council has identified the need for expansion and improvement of Laurel Road as a priority road project; and

WHEREAS, in recognition of the increasing traffic demands on Laurel Road and projections for continued rapid growth into the future, with approval from Sarasota County (hereafter referred to as the County) for the use of Venice Road Impact Fees, the City entered into a contract for the production of a 30% engineering and design expansion plan for Laurel Road; and

WHEREAS, a depiction of the project design, cost estimate for completion of the engineering and subsequent roadway construction, and attendant project details (Exhibit A) was presented to the Venice City Council on September 14, 2021; and

WHEREAS, City Council approved the project design and desires to move forward with completion of the engineering and construction as presented; and

WHEREAS, the City recognizes that Laurel Road and abutting rights-of-way are properties of Sarasota County; and

WHEREAS, the County, as the property owner, possesses the rights and privileges attendant to altering, improving and expanding Laurel Road; and

WHEREAS, as the owner of Laurel Road, the County enjoys the right to pursue financial support from various regional, state, and federal funding sources for improvement and expansion of Laurel Road; and

WHEREAS, through growth and development of residential and commercial properties, the City of Venice has accumulated Road and Mobility Impact Fees and Park Impact Fees to be used exclusively for the expansion of capacity of public properties; and

WHEREAS, the City has accumulated Road and Mobility Impact Fees and Park Impact Fees that are currently unencumbered and otherwise uncommitted, and available for use toward the cost of expansion of Laurel Road; and

WHEREAS, in recognition of the issues cited herein related to Laurel Road, on September 14, 2021, at a regular meeting of Venice City Council, the Council directed staff to construct a resolution enumerating the need for expansion and improvement of Laurel Road.

NOW THEREFORE, BE IT RESOLVED BY THE CITY COUNCIL OF THE CITY OF VENICE, FLORIDA, as follows:

SECTION 1. The above Whereas clauses are ratified and confirmed as true and correct.

SECTION 2. The City requests the Sarasota County Board of County Commissioners (hereafter referred to as “the Board”) to designate the segment of Laurel Road as described herein as a priority road project, and program the road for expansion and improvement as detailed in the 30% engineering and design document attached (Exhibit A), as follows:

1. Direct appropriate County staff resources to undertake continuation of the 30% engineering and completion of the design work to achieve 100% engineering design and permitting.
2. Subsequent to completion of the engineering and design process, undertake construction of the expansion and improvement project.
3. Pursue financial support for the project from the Florida Legislature, and other appropriate state, regional and federal agencies.
4. Initiate use of the County’s procurement resources to complete the Laurel Road expansion project design, execute and oversee a contract for construction

including exercising appropriate processes to acquire necessary expansion of the public right-of-way, and employ appropriate related procurement and oversight processes attendant to project completion.

SECTION 3. The City endorses the use of unencumbered and uncommitted Venice Road and Mobility Impact fees toward this project, and pledges to work with the County in determining the Venice impact fees available for this project.

SECTION 4. The City endorses the use of unencumbered and uncommitted Venice Park Impact Fees for the portion of the planned Laurel Road expansion that constitutes a linear park.

SECTION 5. The City proposes that the planned resurfacing of the current travel lanes of Laurel Road be deferred in favor of using the funds toward the overall expansion and improvement project.

SECTION 6. The City pledges support and willingness to work with the County in pursuit of outside funding support for this project.

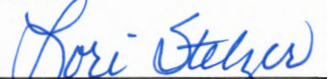
SECTION 7. This Resolution shall take effect upon adoption, as provided by law.

APPROVED AND ADOPTED AT A REGULAR MEETING OF THE VENICE CITY COUNCIL HELD ON THE 28TH DAY OF SEPTEMBER 2021.



Ror. Feinsod, Mayor

ATTEST



Lori Stelzer, MMC, City Clerk

I, Lori Stelzer, MMC, City Clerk of the City of Venice, Florida, a municipal corporation in Sarasota County, Florida, do hereby certify that the foregoing is a full and complete, true and correct copy of a Resolution duly adopted by the City Council of the City of Venice, Florida, at a meeting thereof duly convened and held on the 28th day of September 2021, a quorum being present.

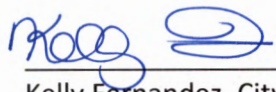
WITNESS my hand and official seal of said City this 28th day of September 2021.



Lori Stelzer, MMC, City Clerk

(S E A L)

Approved as to form:



Kelly Fernandez, City Attorney

Exhibit "A"



LAUREL ROAD

EXPANSION

PROGRESS REPORT
9/14/2021

Presented by:
THE ECONOMIC STIMULUS WORKING GROUP



LAUREL ROAD EXPANSION

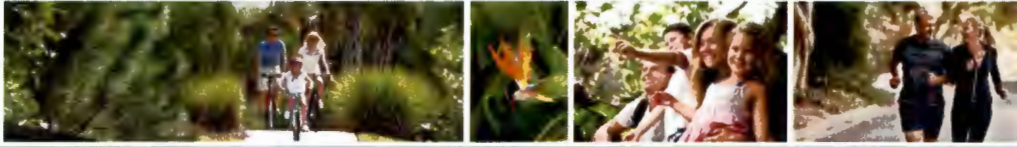
PROGRESS REPORT

OBJECTIVES OF THIS MEETING

- To bring you up to date on the engineering design
- To lay out the budget for the construction of Laurel Road
- To lay out the budget for the Linear Park

To ask you to authorize the **completion of engineering** to get Laurel Road shovel ready for the funding

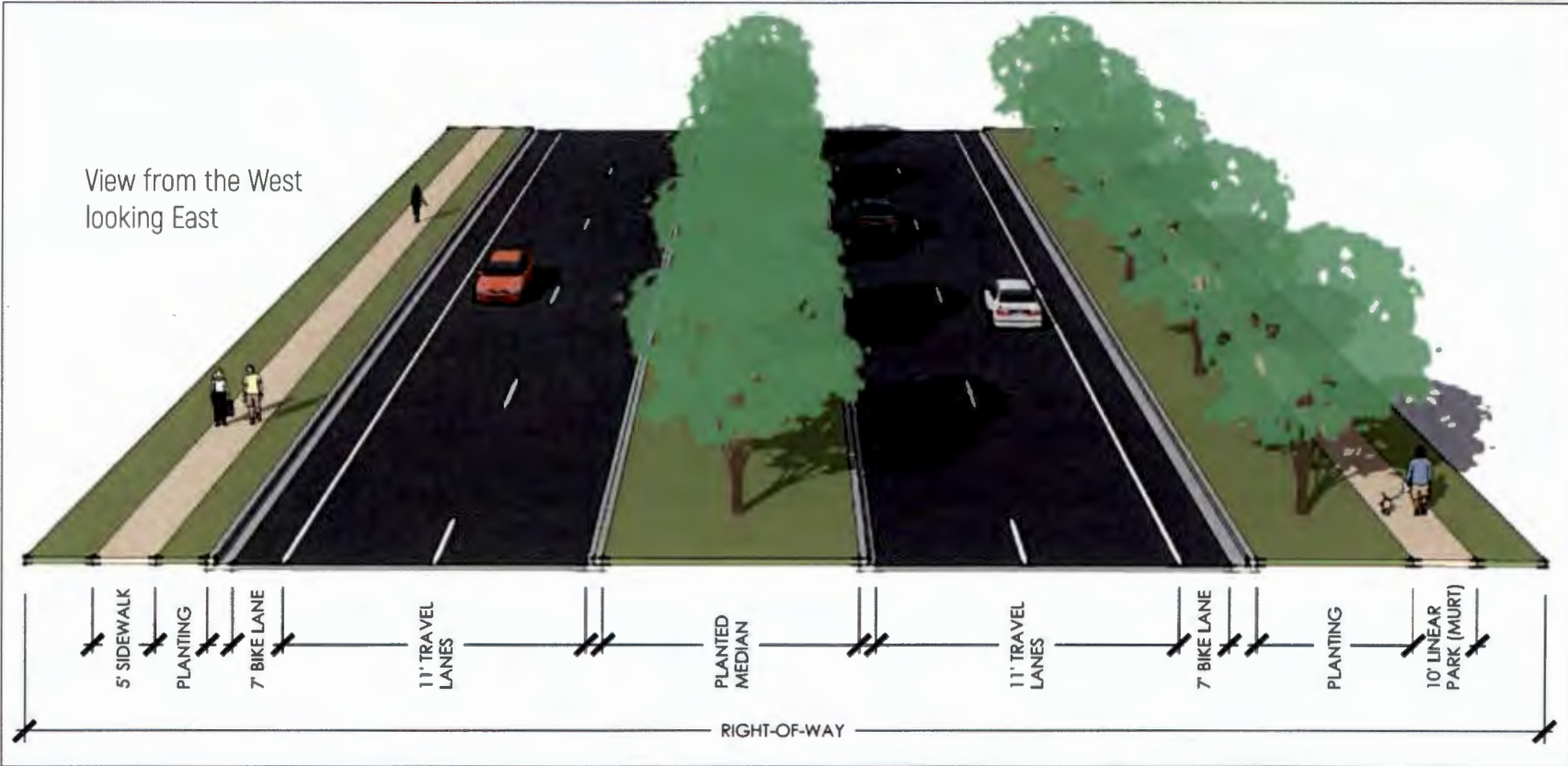




LAUREL ROAD EXPANSION

PROGRESS REPORT

LAUREL ROAD TYPICAL SECTION





LAUREL ROAD EXPANSION

PROGRESS REPORT

INTERSECTION OF LAUREL ROAD AND JACARANDA BOULEVARD



Similar intersection layout to Laurel Rd. and Jacaranda Blvd. shown here at Deer Dr. & Lakewood Ranch Blvd.

In Coordination with City of Venice, Sarasota County and Sarasota County Fire Department



LAUREL ROAD EXPANSION

PROGRESS REPORT

EXAMPLES OF LANDSCAPE DESIGN AND LIGHTING





LAUREL ROAD EXPANSION

PROGRESS REPORT

SUCCESSFUL HISTORY OF PUBLIC PRIVATE PARTNERSHIPS

- **Resulted in major savings for taxpayer**
- Our previous public/private projects
 - US Highway 301 in Manatee County
 - Budgeted for \$32 MM, built for \$21 MM
 - Honore Avenue Extension (3.2 miles in Manatee County)
 - Built for \$6 MM under original estimate
 - Fort Hamer Bridge project
 - Bay Street sidewalk for Sarasota County
 - Budgeted for over \$1.294 MM, built for \$304,000 and completed just 2 months after receiving approval
 - Currently working on the Missing Link in Sarasota County
 - East of I-75 Connecting Clark Road to Knights Trail
- The County budget for Laurel Road is \$16,000,000
- **Our estimate for Laurel Road is consistent with our normal savings of 30% to 40%**





LAUREL ROAD EXPANSION

PROGRESS REPORT

AN ENGINEERING CONTRACT WITH STANTEC



• Top engineering and planning firm
• Long successful history working on public and private sector projects



Stantec

Lump sum to complete engineering design to include:

- Environmental Constraints
- Stormwater Design
- Traffic Analysis
- City and County Coordination

Providing:

- 60% Permit Design Plans
- 90% Bid Phase Design Plans
- 100% Construction Phase Design Plans

To make Laurel Road a shovel-ready construction project.



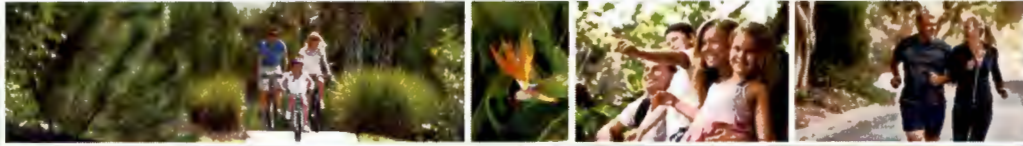
LAUREL ROAD EXPANSION

PROGRESS REPORT

THE BUDGET FOR LAUREL ROAD

Completion of engineering design (Stantec)	\$894,000
Right-of-way acquisition litigation (Bentley)	\$50,000
Construction of the road (ESWG)	\$6,000,000
Joint use ponds (other than right-of-way acquisitions) (Neal)	\$500,000
Right-of-Way	\$2,370,000
Lighting (ESWG)	\$300,000
Landscaping and irrigation (ESWG)	\$400,000
Management fees 6% (ESWG)	\$489,000
ESTIMATED TOTAL (PRIMARILY FROM MOBILITY FEES)	\$11,003,000





LAUREL ROAD EXPANSION

PROGRESS REPORT

BUDGET FOR LINEAR PARK (FROM PARK IMPACT FEES)



Multi-Use Recreational Trail	\$400,000
Landscape and Irrigation for Trail Including Enhanced Trail Features	\$300,000*
TOTAL	\$700,000

*If you direct us, we can revise to implement Florida Friendly landscaping





LAUREL ROAD EXPANSION

PROGRESS REPORT

LINEAR PUBLIC PARK AND MULTI-USE RECREATIONAL TRAIL



- Enhanced trail features with strong connectivity to adjacent open space, attractions and amenities
- Creating fun activities for passive and active users to experience along the trail system
- Natural play elements, functional fitness nodes, along with passive and relaxing spaces
- Avid Trails is example



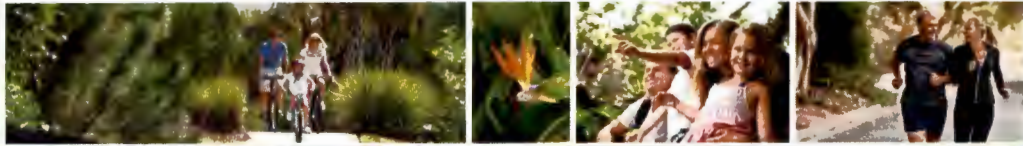


LAUREL ROAD EXPANSION

PROGRESS REPORT

LINEAR PARK ENHANCING CONNECTIVITY

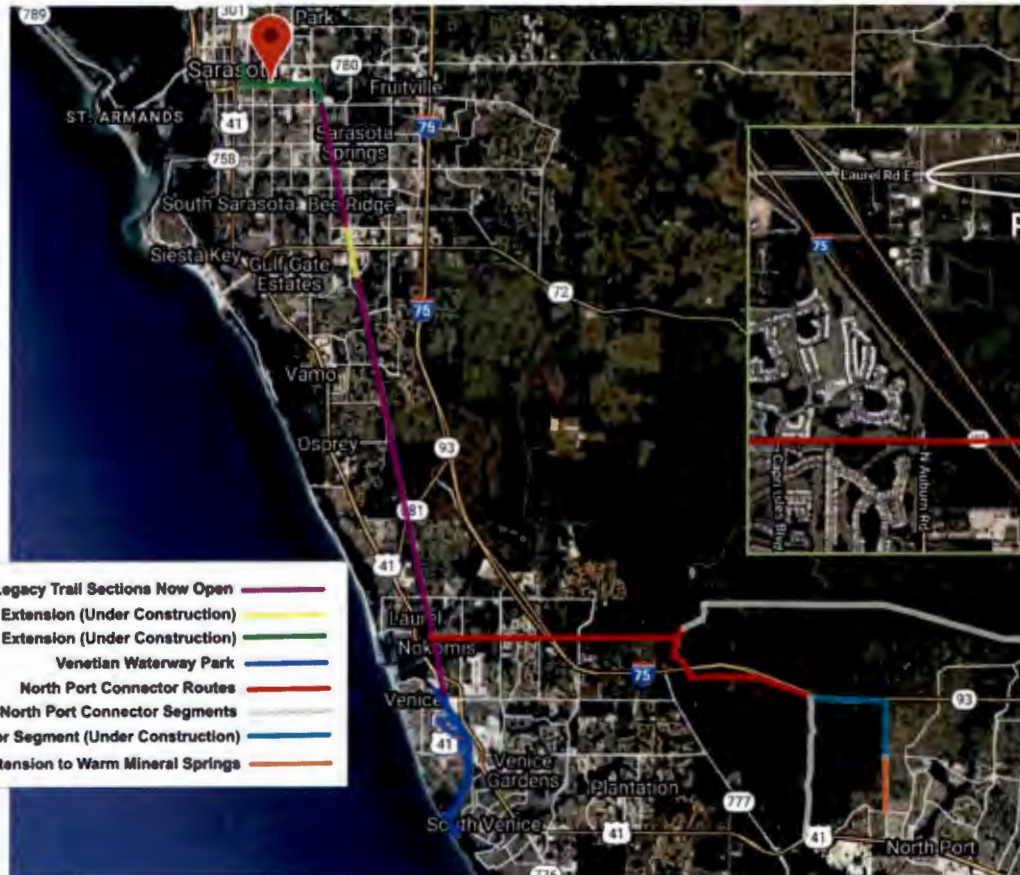




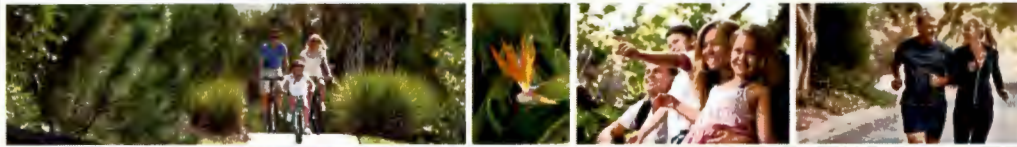
LAUREL ROAD EXPANSION

PROGRESS REPORT

MULTI-USE RECREATIONAL TRAIL CONNECTING TO THE LEGACY TRAIL



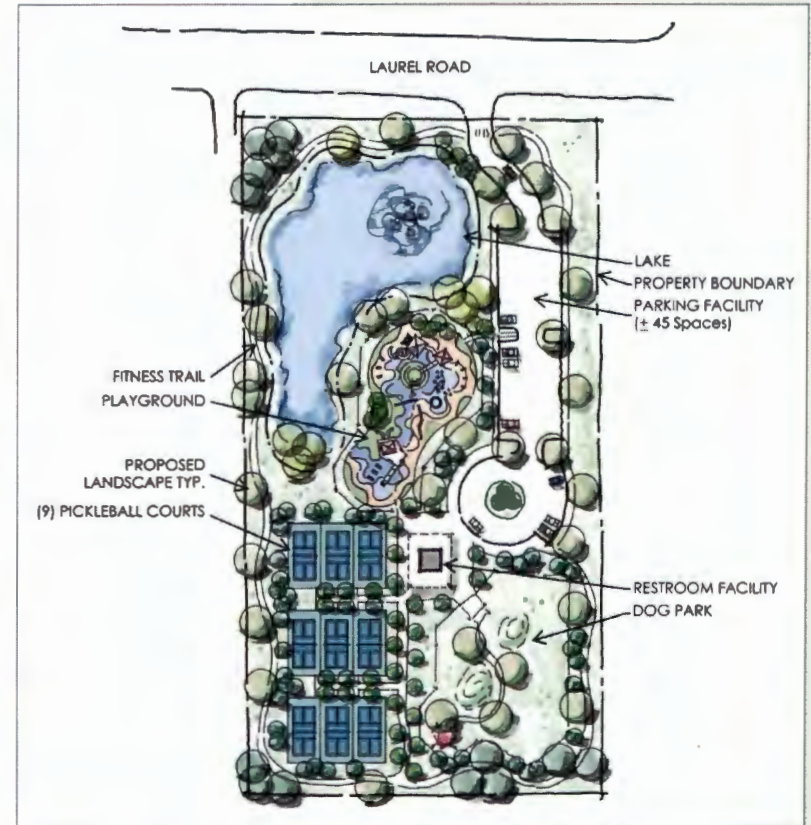
- Legacy Trail Sections Now Open
- Segment 2 of Extension (Under Construction)
- Segment 3 of Extension (Under Construction)
- Venetian Waterway Park
- North Port Connector Routes
- Natural Surface North Port Connector Segments
- Paved North Port Connector Segment (Under Construction)
- Future Paved Extension to Warm Mineral Springs



LAUREL ROAD EXPANSION

PROGRESS REPORT

A PLAN FOR THE ANCHOR PARK



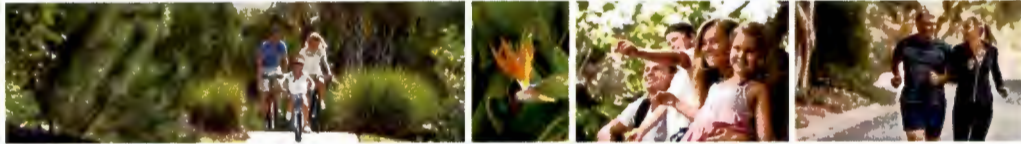


LAUREL ROAD EXPANSION

PROGRESS REPORT

INITIATING EMINENT DOMAIN





LAUREL ROAD EXPANSION

PROGRESS REPORT

HERE'S HOW WE WILL PAY FOR IT



City of Venice mobility fee balance	\$7,803,244
· Additional 2022 fees	\$800,000
· Additional 2023 fees	\$800,000
· Additional 2024 fees	\$800,000
TOTAL	\$10,203,244

(You have ample sources from known or committed sources to build Laurel Road)

ROAD AND MOBILITY IMPACT FEES - The City and County report the following balances at June 30, 2021

	County	City
Fund 125 - Mobility Fee	\$ 5,453,896	\$ 400,000
Fund 183 - Road Impact Fee	151,271	
Fund 383 - Road Impact Fee Const	4,498,077	-
	<u>10,103,244</u>	<u>400,000</u>
Less: Commitments/Encumbrances Pinebrook/Venice/Ridgewood Intersection Laurel Road	(2,300,000)	(400,000)
Amount Available	\$ 7,803,244	\$ -

Subject to information confirmed from the City of Venice and Sarasota County (and decisions related to the CIGP grant)



LAUREL ROAD EXPANSION

PROGRESS REPORT

AVAILABLE FUNDS SHOULD WE HAVE A SHORTFALL

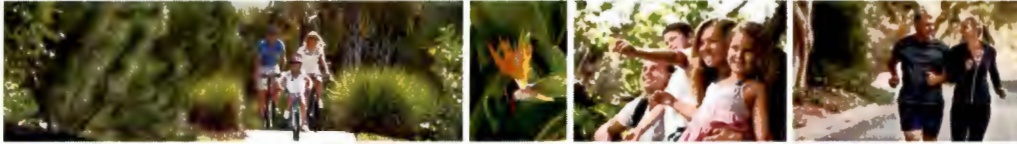
Grant from Florida Legislature	\$5,500,000
Surface Transportation Act	\$5,500,000
[These are about 1/2 of the construction cost]	
Our team has gotten grants in recent years of \$17,000,000, \$11,000,000 and \$3,600,000	
We think this is very possible	
State Infrastructure Bank	\$2,000,000
Laurel Road CDD	\$5,000,000
Pay Neal on Terms	\$2,000,000
Request Sarasota County to reallocate resurfacing	\$1,900,000

BUILD THE ROAD

We think there are more than ample funds to build this road at this time.

We believe we need to get started to have shovel ready plans for construction.





LAUREL ROAD EXPANSION

PROGRESS REPORT

FREE MONEY FROM OTHER SOURCES



Successful history working with local governments in obtaining grants

Legislative and Political Process

Magic of A-S-K

Importance of shovel-ready projects

Grants not possible unless shovel-ready (Cattlemen Road example)

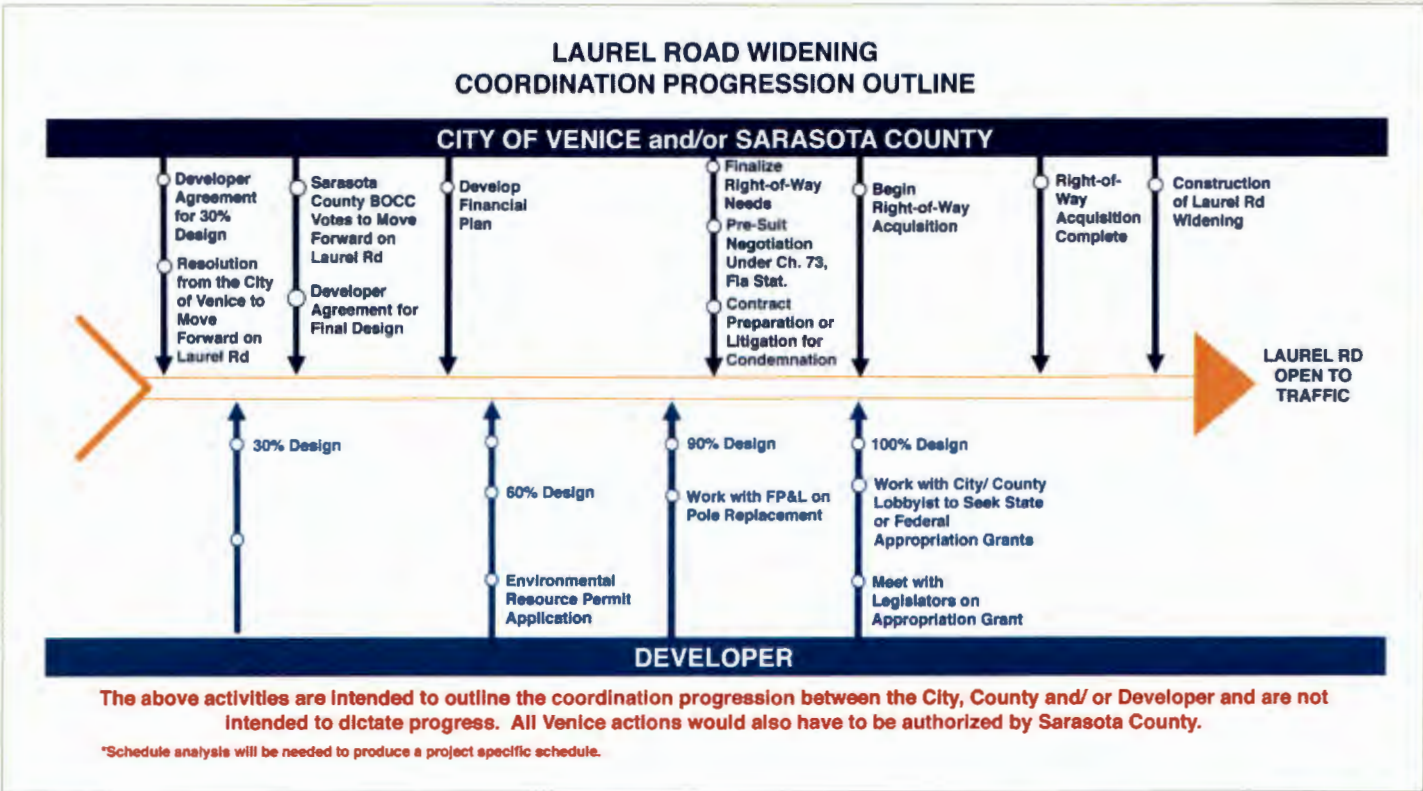




LAUREL ROAD EXPANSION

PROGRESS REPORT

CRITICAL PATH





LAUREL ROAD EXPANSION

PROGRESS REPORT

IN CONCLUSION



Thank you for this opportunity

In discussion since April 2016

We have a rare opportunity to build this Highway for less than the budgeted cost

Particularly with the 2 Stimulus Programs in operation

And the opportunities available for the right-of-way, **but only for a limited time**



LAUREL ROAD EXPANSION

PROGRESS REPORT

IN CONCLUSION

If the City agrees to move forward with the next steps towards the completion of the Laurel Road Project, we would recommend the following motion:

The Venice City Council authorizes Stantec Engineering, of Sarasota, Florida, to complete the required 100% plans for of the Laurel Road Project and agrees to pay Stantec an amount not to exceed \$894,000.

The Venice City Council requests the County to invoke its power of eminent domain for purposes of acquiring the right-of-way necessary for completion of the Laurel Road Project and further requests that the County retain Attorney Morgan Bentley to represent it in same, in order to expedite the eminent domain process.

The Venice City Council shall retain and authorize Capital City Consulting, Tallahassee, Florida, to obtain approval of a 50-50 grant from the Florida Legislature.

The Venice City Council hereby directs its Finance Department to work with the Economic Stimulus Working Group and Lucy Gallo of DPGF (Development, Planning & Financial Group) to develop a fiscal plan to expend approximately \$11,003,000.00 for the Laurel Road Project, and to report back to the City Council with such plan no later than December 1st, 2021.

