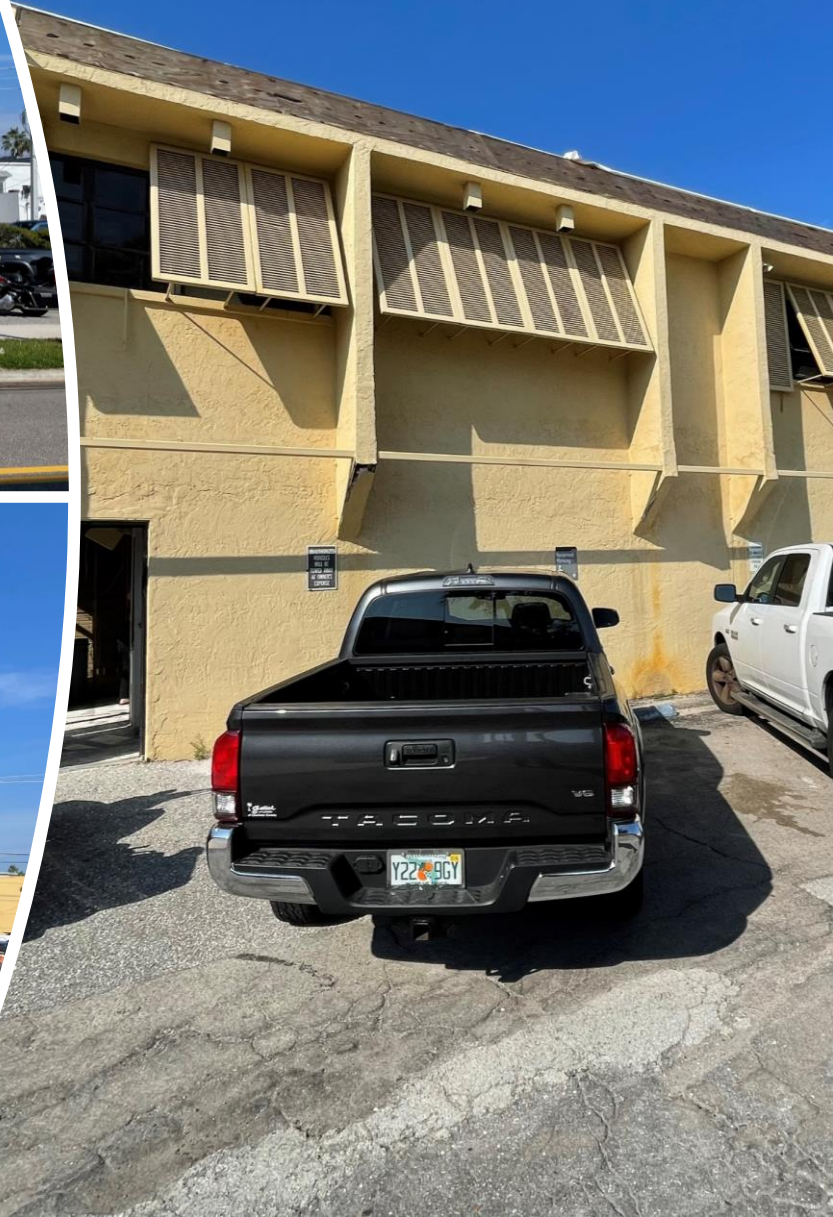
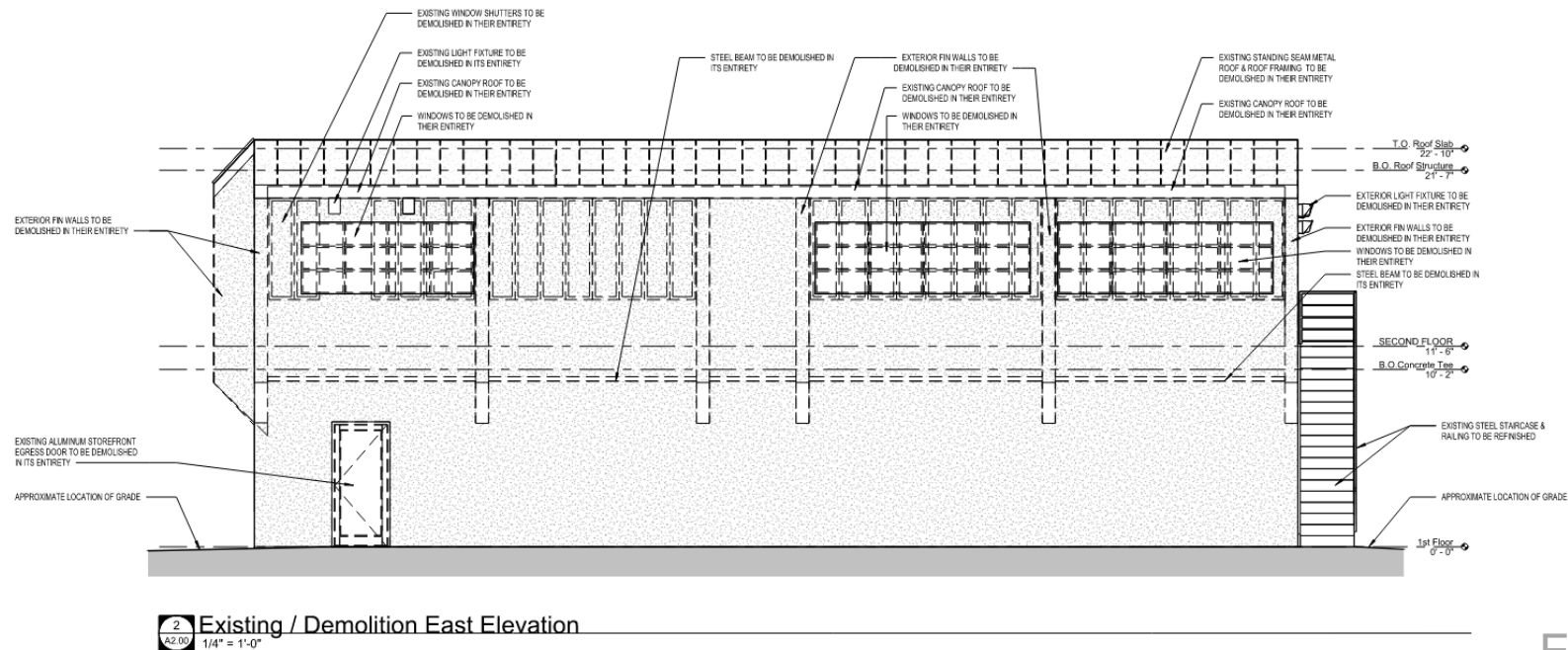
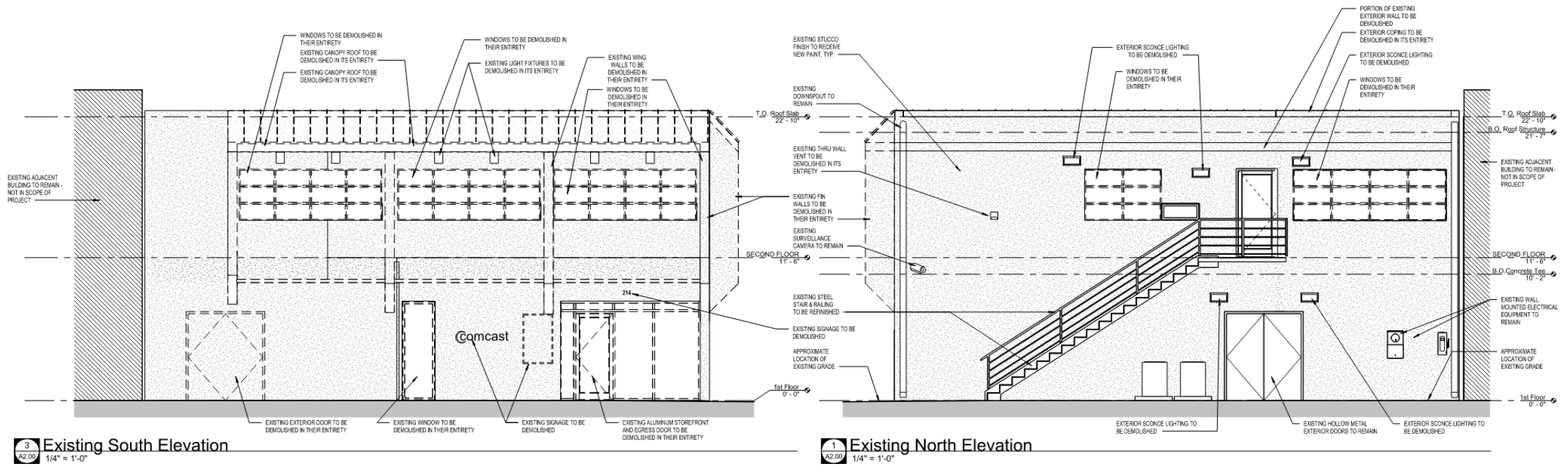


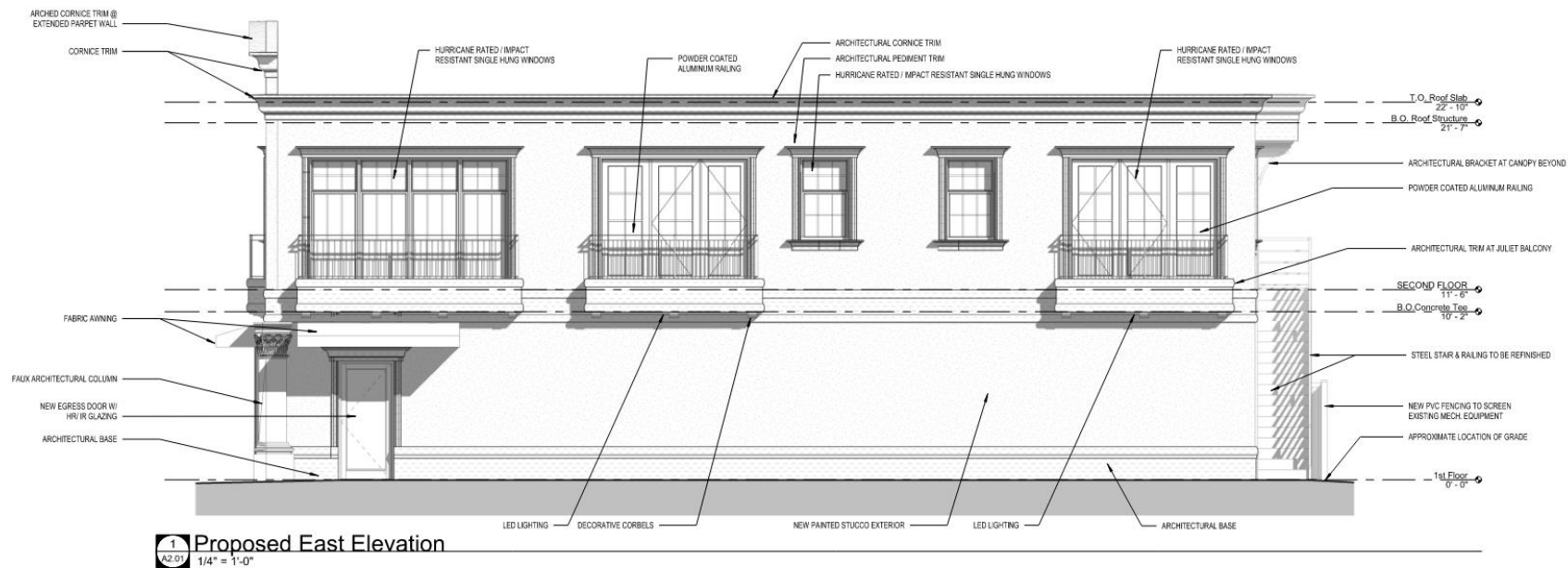
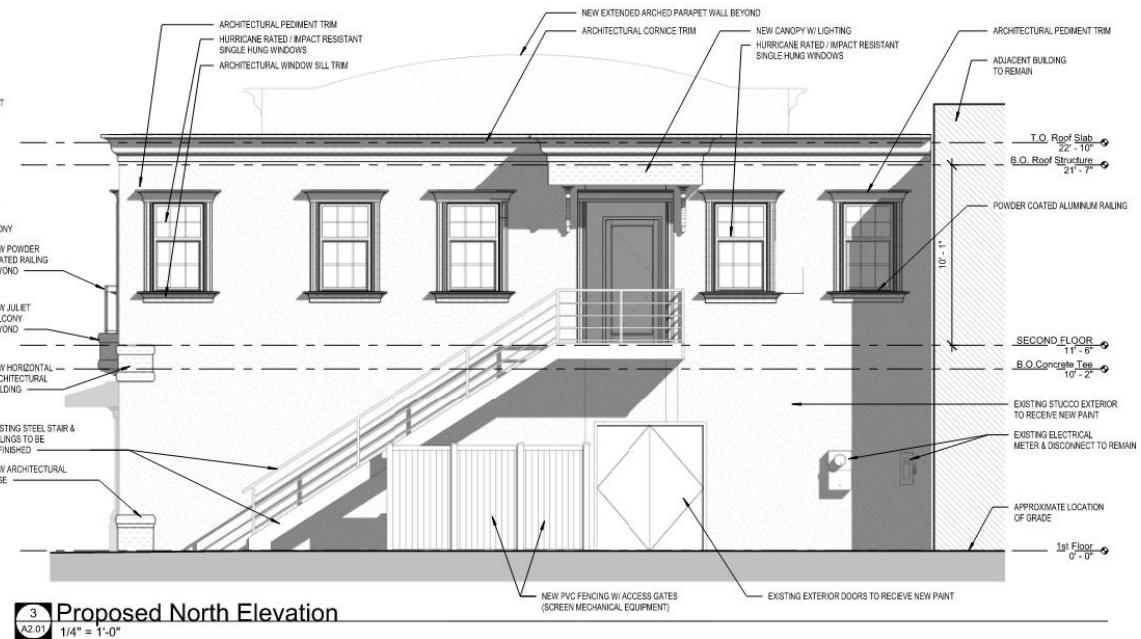
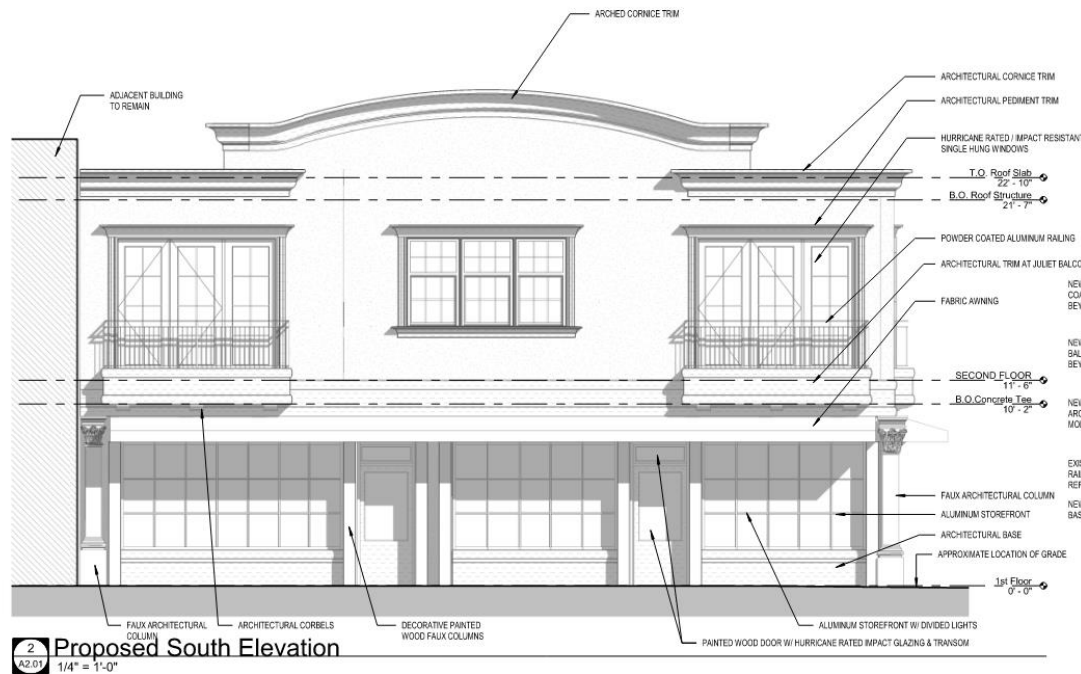
# 214 W. Miami Avenue

Building Renovation  
Project



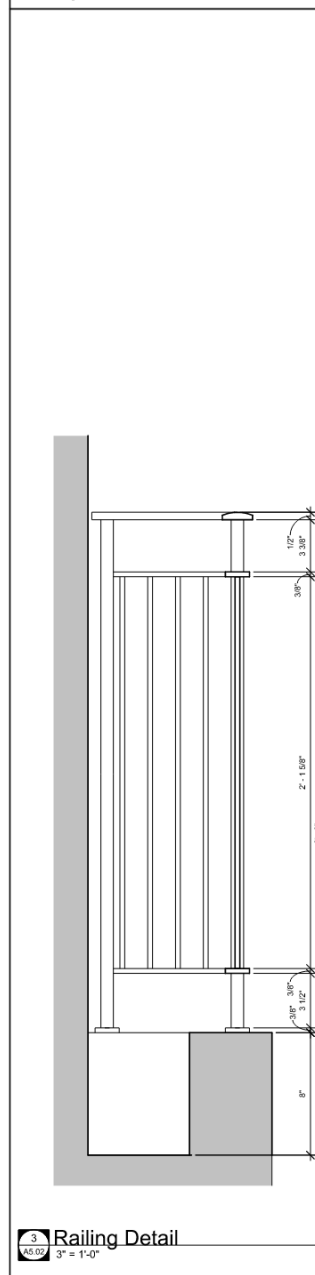




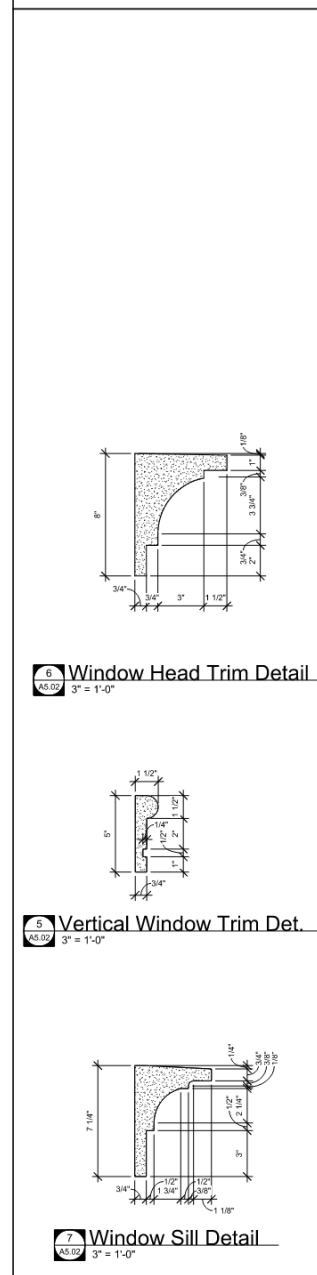




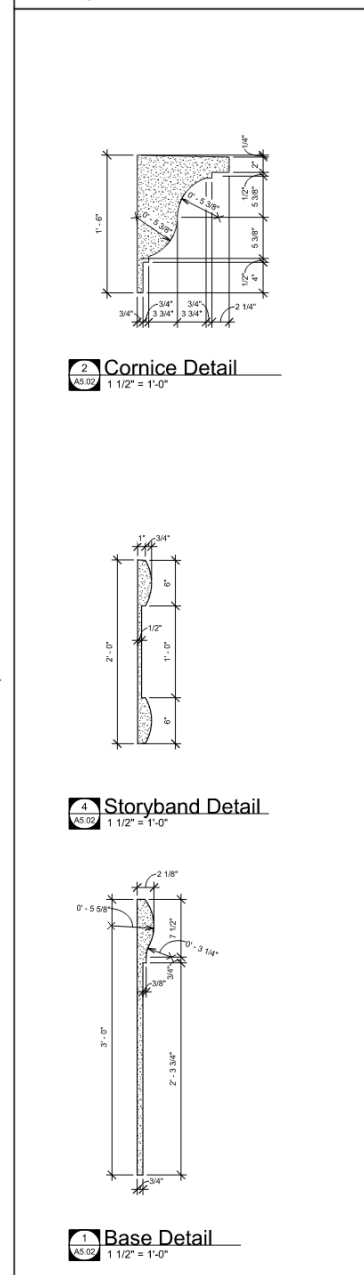
## Railing Profiles



## Window Trim Profiles



## Building Trim Profiles





SW 0019  
Festoon Aqua



SW 7008  
Alabaster







# SIERRA PACIFIC DOORS & WINDOWS



FeelSafe Outswing Hinged Door FL# 14504 &  
FeelSafe Direct Set FL# 27616

FeelSafe Outswing Hinged Door FL# 14504 &  
FeelSafe Direct Set FL# 27616

## FeelSafe Outswing

As you can image, a patio door needs lots of extra engineering and structural reinforcement to outlive hurricane-force winds and flying debris. That's definitely true to FeelSafe patio doors. Despite their stylish good looks and effortless operation, our swinging patio doors are built to take it. They swing out—not in—for optimum protection from high winds.

- Can withstand hurricane-force winds with an impressive structural performance rating of PG 65 (+65/-70) for a two-wide or PG 60 (+60/-60) for three- and four-wide configurations.

- Add striking dimension with optional full-radius top in up to 2-wide combinations & 10' tall

- European 5-point locking system for maximum security.

- Chemically bonded joints and stainless steel hinges and strike plates.

- Unique ¼" plate mull option provides appearance of seamless direct mull to transoms & s

- Approved for combinations up to 12' width x 8'3" height.

- Thick heavy-duty extruded aluminum cladding for a low maintenance exterior.

- Extra heavy-duty .05" thick extruded aluminum structural nailing fin standard.

- Butt hinges standard.

- Protected by our exclusive CoreGuard Plus™, the industry's best wood protection.

- Blocks 99% of UV rays.

- Strongest, laminated glass uniquely constructed on the outside of your window, where it won't be broken by a stray golf ball or sea gull.

- Largest selection of options including 70 exterior AAMA 2605 powder-coat finishes.



# SIERRA PACIFIC DOORS & WINDOWS



## FeelSafe Double and Single Hung

Our FeelSafe single & double hung windows are a thing of beauty. With no unsightly plastic jamb liners, they frame any view with elegant, natural beauty. You'll note a superb attention to detail and fine craftsmanship. Yet their structural performance is so exceptional, they surpass the toughest coastal building codes.

- High-strength, shatter-resistant, laminated glass.
- Smartly engineered Insulated units have the strongest laminated glass on the outside where it won't get broken by a stray golf ball or sea gull.
- Structural sealants throughout.
- Exterior clad with extra heavy-duty .050" extruded aluminum.
- Well suited for residential and light commercial applications.
- Select from 9 wood species. Prime, paint or stain optional.
- Protected by our exclusive CoreGuard Plus™, the industry's best wood protection.
- Removable side-load bottom sash for easy cleaning.
- Structural nailing fin for superior installation, reduced racking problems.

