

UTILITY RECORD DRAWINGS FOR FORCEMAIN EXTENSION

PART OF SECTION 35, TOWNSHIP 38 SOUTH, RANGE 19 E,
SARASOTA COUNTY, FLORIDA

A DEVELOPMENT BY
SARASOTA MEMORIAL HEALTH CARE SYSTEM

1700 SOUTH TAMiami TRAIL
SARASOTA, FLORIDA, 34239
(941) 917-2048

RECORD DRAWINGS
December 5, 2022
APPROVED

LEGEND

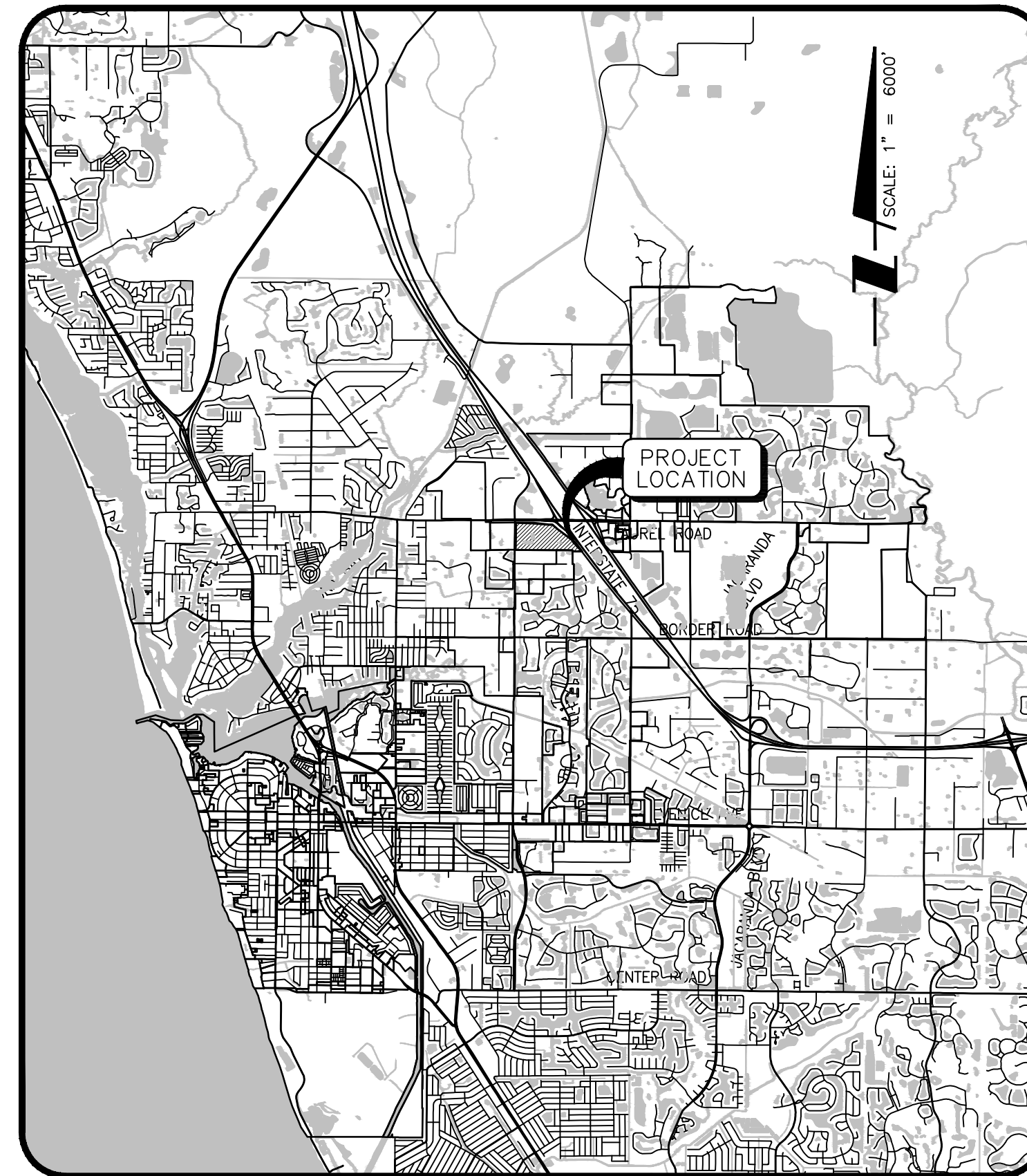
ABBREVIATIONS

BOC	BACK OF CURB or BACK OF GUTTER
EOP	EDGE OF PAVEMENT
DE	DRAINAGE EASEMENT
LME	LAKE MAINTENANCE EASEMENT
UE	UTILITY EASEMENT
CUE	COUNTY UTILITY EASEMENT
EL or ELEV	ELEVATION
INV	INVERT
LF	LINEAR FEET
NGVD	NATIONAL GEODETIC VERTICAL DATUM
PVI	POINT OF VERTICAL INTERSECTION
NIC	NOT IN CONTRACT
R/W or ROW	RIGHT OF WAY
SB	SOIL BORING
STA	STATION
UP	UTILITY POLE
FDOT	FLORIDA DEPARTMENT OF TRANSPORTATION
CATV	CABLE TELEVISION
FPL or FP&L	FLORIDA POWER & LIGHT
UTF	UNITED TELEPHONE OF FLORIDA
B	BASE LINE
C	CENTERLINE
F	FLOW LINE
P	PROPERTY LINE
CMP	CORRUGATED METAL PIPE
D.I.P.	DUCTILE IRON PIPE
PVC	POLYVINYL CHLORIDE PIPE
HDPE	HIGH DENSITY POLYETHYLENE
RCP	REINFORCED CONCRETE PIPE
ERCPC	ELLIPTICAL REINFORCED CONCRETE PIPE
MH	MANHOLE
STR	STORM SEWER STRUCTURE
X.XX' LT/X.XX' RT	FEET LEFT or FEET RIGHT

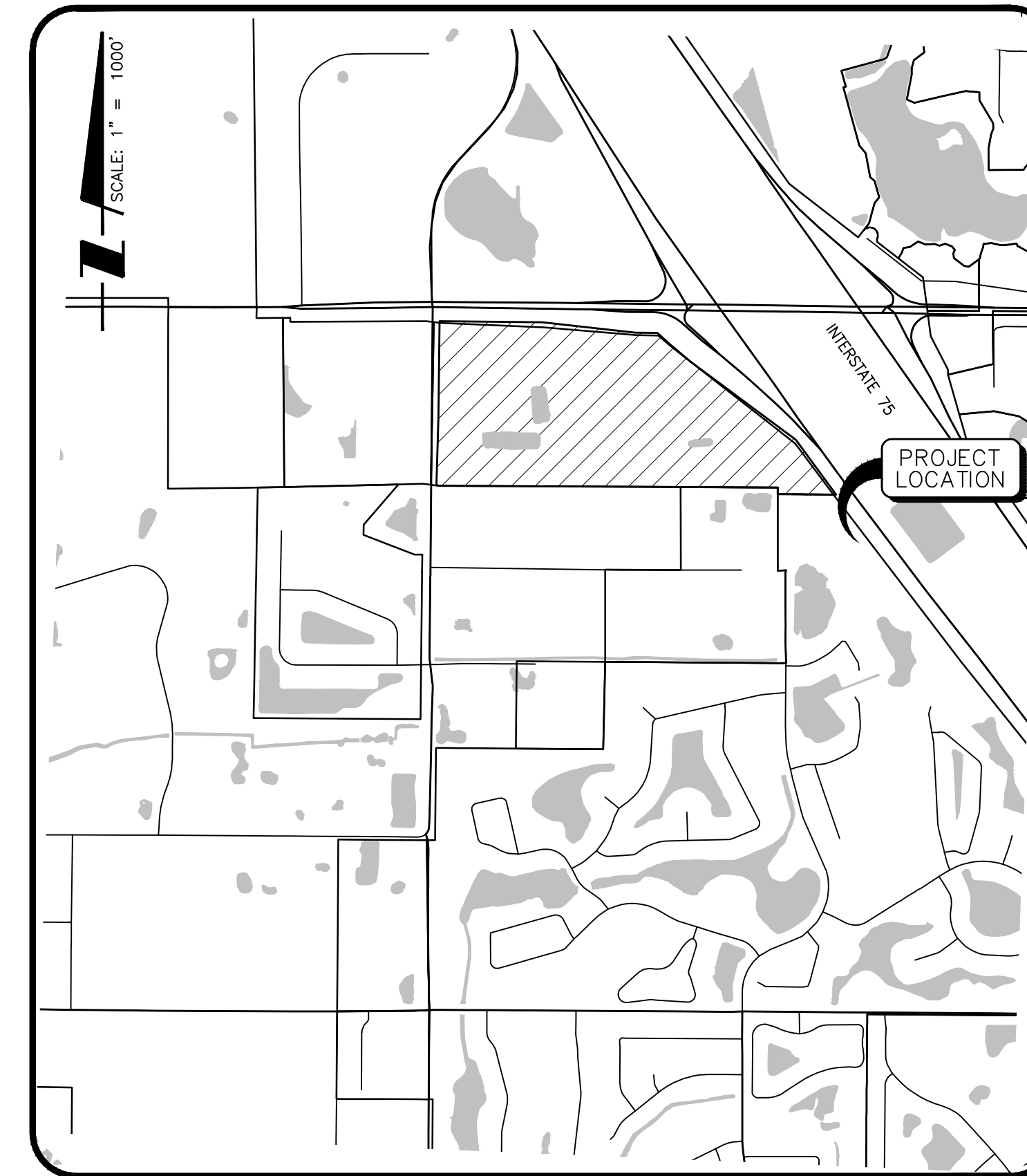
SYMBOLS

	AIR RELEASE VALVE, COMPLETE
	IN-LINE GATE VALVE W/ BOX
	IN-LINE PLUG VALVE W/ BOX
	FIRE HYDRANT, COMPLETE
	BLOW-OFF W/ BACTERIAL SAMPLE POINT
	BACTERIAL SAMPLE POINT
	PIPE PLUG
	WATER METER
	IRRIGATION METER
	REDUCER
	BACKFLOW PREVENTER/ABOVE GROUND METER
	SANITARY SEWER MANHOLE
	SANITARY SEWER LATERAL & CLEAN-OUT
	PUMP STATION
	STORM SEWER & STRUCTURE
	HEADWALL
	U-ENDWALL
	CONTROL STRUCTURE
	MITERED END/FLARED END SECTION
	PROPOSED ELEVATION
	PROPOSED PAVEMENT ELEVATION
	EXISTING ELEVATION
	EXISTING PAVEMENT ELEVATION
	DIRECTION OF DRAINAGE FLOW
	SWALE & DIRECTION OF FLOW
	HANDICAPPED PARKING SPACE

NOTE: OPEN SYMBOLS AND DASHED LINES DENOTE EXISTING IMPROVEMENTS



LOCATION MAP



SITE MAP

RECORD
DRAWING

INDEX TO SHEETS

SHEET NO.	DESCRIPTION
1	COVER SHEET
2	AERIAL LOCATION MAP
3	SITE PLAN
4-7	PLAN AND PROFILE
8	UTILITY DETAILS
9	BEST MANAGEMENT PRACTICES PLAN
10	BEST MANAGEMENT PRACTICES DETAILS

NO.	DATE	DESCRIPTION	BY
△	07/19/21	RECORD DRAWINGS	CROSS
△	10/29/20	CONSTRUCTION DOCUMENTS	BLB/117073

STATUS : REVISIONS

PROJECT SURVEYOR ROBERT R. CUNNINGHAM P.S.M. NO.3924	PROJECT ENGINEER RYAN D. BRADY, P.E. FLORIDA LICENSE NO. 84132	PROJECT MANAGER MELANIE DELEHANTY SMITH, P.E. FLORIDA LICENSE NO. 75447
--	--	---

DATE _____ CHECKED BY _____

RESERVED FOR STATUS AND DATE STAMPS

PROJECT NUMBER
215614375

DATE 10/29/2020	INDEX NUMBER D-ASB 01
---------------------------	---------------------------------

NOTE: AS-BUILT INFORMATION IS SHOWN IN BRACKETS []
NOTE: AS-BUILT INFORMATION PROVIDED BY CONTRACTOR IS SHOWN IN PARENTHESES ()

AS-BUILT DRAWING

CROSS SURVEYING, L.L.C.

CERTIFICATE OF AUTHORIZATION LB 0007977
5285 OFFICE PARK BLVD, SUITE 101, BRADENTON, FLORIDA 34203
(941) 748-8340 (941) 896-9938 FAX

I HEREBY CERTIFY THAT THE AS-BUILT DRAWING OF THE IMPROVEMENTS SHOWN IN BRACKETS [] UPON THE DESIGN CONSTRUCTION PLANS, IS TO THE BEST OF MY KNOWLEDGE, INFORMATION, AND BELIEF A TRUE AND CORRECT REPRESENTATION OF THE IMPROVEMENTS AS SHOWN AND WERE COLLECTED IN THE FIELD BY A REPRESENTATIVE UNDER THE DIRECT SUPERVISION OF THE SURVEYOR AND MAPPER.
DATE OF CERTIFICATION 07-19-2021
DATE OF FIELD SURVEY 06-15-2021

NOT VALID WITHOUT THE ORIGINAL SIGNATURE AND A SEAL OF FLORIDA LICENSED SURVEYOR AND MAPPER. THE SEAL APPEARING ON THIS DOCUMENT WAS AUTHORIZED BY GERALD D. STROOP, JR., P.S.M.

GERALD D. STROOP, JR., P.S.M.
FLORIDA CERTIFICATE NO. 4679

Stantec Consulting Services Inc.
6900 Professional Parkway East
Sarasota FL 34240-8414
Tel: (941) 907-6900
www.stantec.com

Copyright Reserved
The Contractor shall verify and be responsible for all dimensions. DO NOT scale the drawing - any errors or omissions shall be reported to Stantec without delay.
The Copyrights to all designs and drawings are the property of Stantec. Reproduction or use for any purpose other than that authorized by Stantec is forbidden.

Consultant

Flad Architects

Flad & Associates of Florida, Inc.
AAC000658
2202 N. Westshore Blvd., Ste. 125
Tampa, FL 33607
Tel 813-830-6612
www.flad.com

Flad Structural Engineers

Flad & Associates, Inc.
27676
644 Science Drive
Madison, WI 53711
Tel 608-238-2661
Fax 608-238-6727
www.flad.com

AEI Affiliated Engineers

LICENSE #: CA 5140
Affiliated Engineers SE, Inc.
777 S Harbour Island Blvd. #450
Tampa, FL 33602
Tel: (813) 405-3800

Revision	By	Appd	YYYY.MM.DD
1	RECORD DRAWINGS	CROSS	07/19/21
0	CONSTRUCTION DOCUMENTS	BUB	10/29/2020
Issued	By	Appd	YYYY.MM.DD
File Name: 215614375-006-002PL	RTD	RTD	MDS
	Dwn.	Dgn.	Chkd.

Permit/Seal

MELANIE DELEHANTY SMITH, P.E.
FLORIDA LICENSE NO. 75447

Client/Project Logo



Client/Project
SARASOTA COUNTY PUBLIC HOSPITAL DISTRICT

90 BED NEW HOSPITAL
2600 LAUREL ROAD
NOKOMIS, FL 34275

Title
AERIAL LOCATION MAP

Project No. 215614375	Scale 1" = 200'
Revision Sheet 0	Drawing No. 10



m:\work_projects\havel road hospital - jordan\memos\from client\2021\215614375-006-002PL.dwg (2021.07.19) record drawings.dwg, user: jordan, title: 215614375-006-002PL, sheet: 10 of 10, date: 10/29/2020, time: 1:24:09 PM

Flad Architects

Flad & Associates of Florida, Inc.
AAC000658
2202 N. Westshore Blvd., Ste. 125
Tampa, FL 33607
Tel: 813-830-6612
www.flad.com

Flad Structural Engineers

Flad & Associates, Inc.
27676
644 Science Drive
Madison, WI 53711
Tel: 608-238-2661
Fax: 608-238-6727
www.flad.com

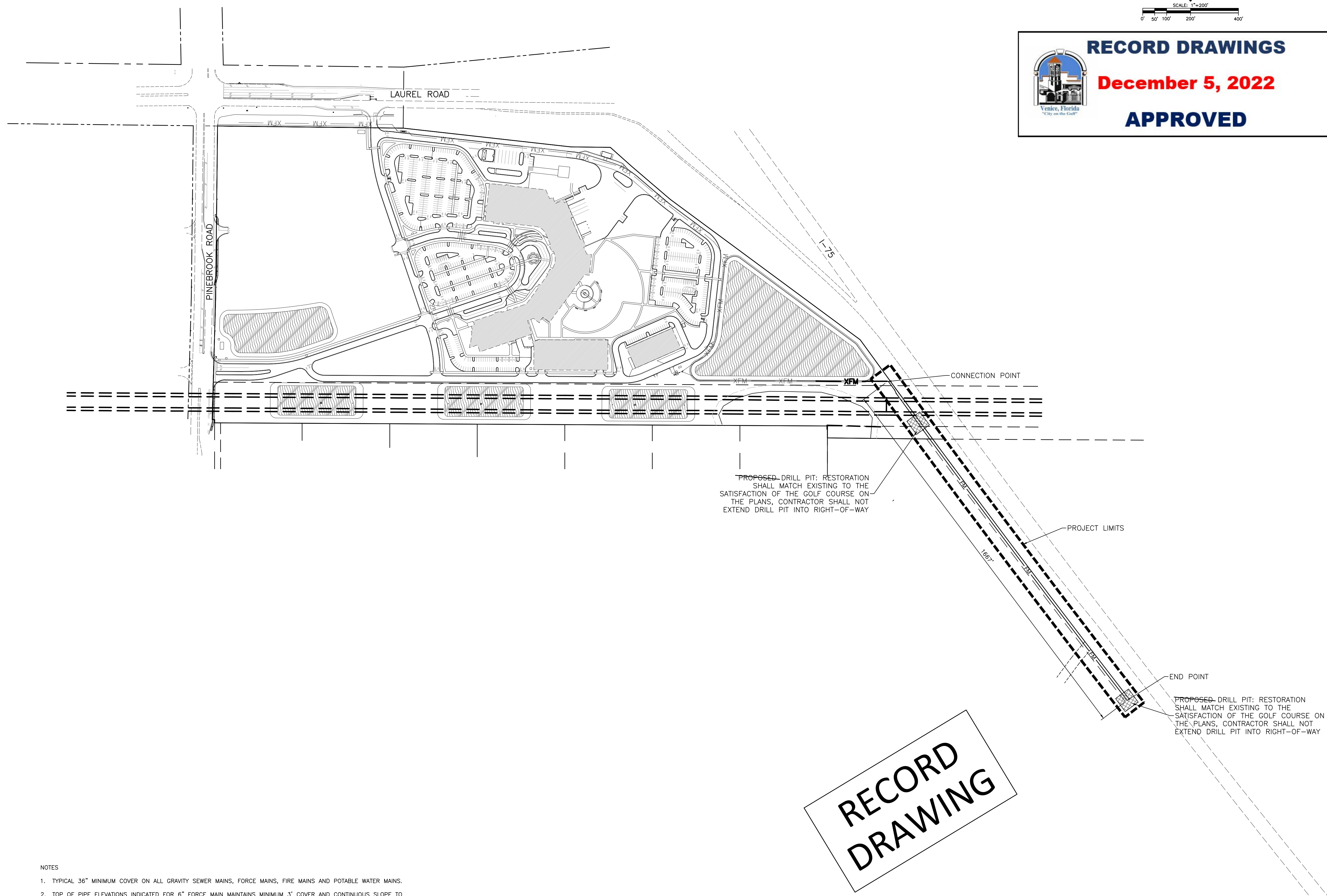
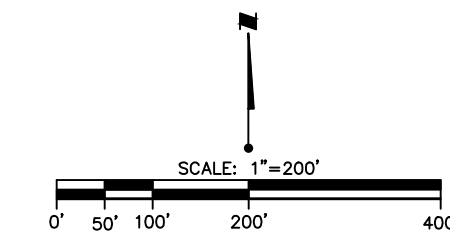
AEI Affiliated Engineers

LICENSE #: CA 5140
Affiliated Engineers SE, Inc.
777 S Harbour Island Blvd. #450
Tampa, FL 33602
Tel: (813) 405-3800

RECORD DRAWINGS

December 5, 2022

APPROVED



RECORD
DRAWING

- NOTES
- TYPICAL 36" MINIMUM COVER ON ALL GRAVITY SEWER MAINS, FORCE MAINS, FIRE MAINS AND POTABLE WATER MAINS.
 - TOP OF PIPE ELEVATIONS INDICATED FOR 6" FORCE MAIN MAINTAINS MINIMUM 3" COVER AND CONTINUOUS SLOPE TO PREVENT THE NEED OF AN ARV. ANY VERTICAL DEFLECTION (HIGH POINT) WOULD REQUIRE AN ARV TO BE PROVIDED. RECORD DRAWINGS TO CONFIRM.

Revision	By	Appd	YYYY.MM.DD
1	RECORD DRAWINGS	CROSS	07/19/21
0	CONSTRUCTION DOCUMENTS	BLB	10/29/2020
Issued		By	Appd
File Name:	215614375-006-101SP	RTD	MDS
		Dwn.	Dgdn.
		Chkd.	YYYY.MM.DD

Permit/Seal

MELANIE DELEHANTY SMITH, P.E.
FLORIDA LICENSE NO. 75447

Client/Project Logo



Client/Project
SARASOTA COUNTY PUBLIC HOSPITAL DISTRICT

90 BED NEW HOSPITAL

2600 LAUREL ROAD
NOKOMIS, FL 34275

Title
SITE PLAN

Project No.
215614375

Scale
1" = 200'

Revision Sheet
0 3 of 10

Drawing No.
10

Copyright Reserved

The Contractor shall verify and be responsible for all dimensions. DO NOT scale the drawing.
-any errors or omissions shall be reported to Stantec without delay.
The Copyrights to all designs and drawings are the property of Stantec. Reproduction or use for any purpose other than that authorized by Stantec is forbidden.

Consultant

Flad Architects

Flad & Associates of Florida, Inc.
AAC000658
2202 N. Westshore Blvd., Ste. 125
Tampa, FL 33607
Tel 813-830-6612
www.flad.com

Flad Structural Engineers

Flad & Associates, Inc.
27676
644 Science Drive
Madison, WI 53711
Tel 608-238-2661
Fax 608-238-6727
www.flad.com

AEI Affiliated Engineers

LICENSE #: CA 5140
Affiliated Engineers SE, Inc.
777 S Harbour Island Blvd. #450
Tampa, FL 33602
Tel: (813) 405-3800

NOTE: AS-BUILT INFORMATION IS SHOWN IN BRACKETS []
NOTE: AS-BUILT INFORMATION PROVIDED BY CONTRACTOR IS SHOWN IN PARENTHESES ()

AS-BUILT DRAWING

CROSS SURVEYING, L.L.C.

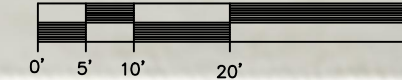
CERTIFICATE OF AUTHORIZATION LB 0007977
5265 OFFICE PARK BLVD, SUITE 101, BRADENTON, FLORIDA 34203
(841) 748-8340 (841) 898-9338 FAX

I HEREBY CERTIFY THAT THE AS-BUILT DRAWING OF THE IMPROVEMENTS SHOWN IN BRACKETS [] UPON THE DESIGN CONSTRUCTION PLANS, IS TO THE BEST OF MY KNOWLEDGE, INFORMATION, AND BELIEF A TRUE AND CORRECT REPRESENTATION OF THE IMPROVEMENTS AS SHOWN AND WERE COLLECTED IN THE FIELD BY A REPRESENTATIVE UNDER THE DIRECT SUPERVISION OF THE SURVEYOR AND MAPPER.

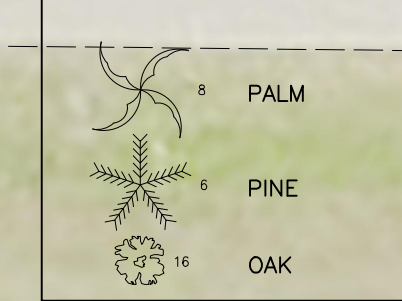
Gerald D. Stroop, Jr.
GERALD D. STROOP, JR., PSM

FLORIDA CERTIFICATE NO. 4679

SCALE: 1"=20'



TREE LEGEND



NOTE: CONTRACTOR NOT TO GO BELOW MINIMUM BEND RADIUS OF 60' FOR 6" FUSIBLE HDPE

NOTE: ADVANCED NOTICE AND COORDINATION WITH THE WATERFORD GOLF CLUB WILL BE REQUIRED FOR CONSTRUCTION. THE CONTACT IS ROB MCCOY, 941-356-1794, ROB@GOLFINVENICE.COM

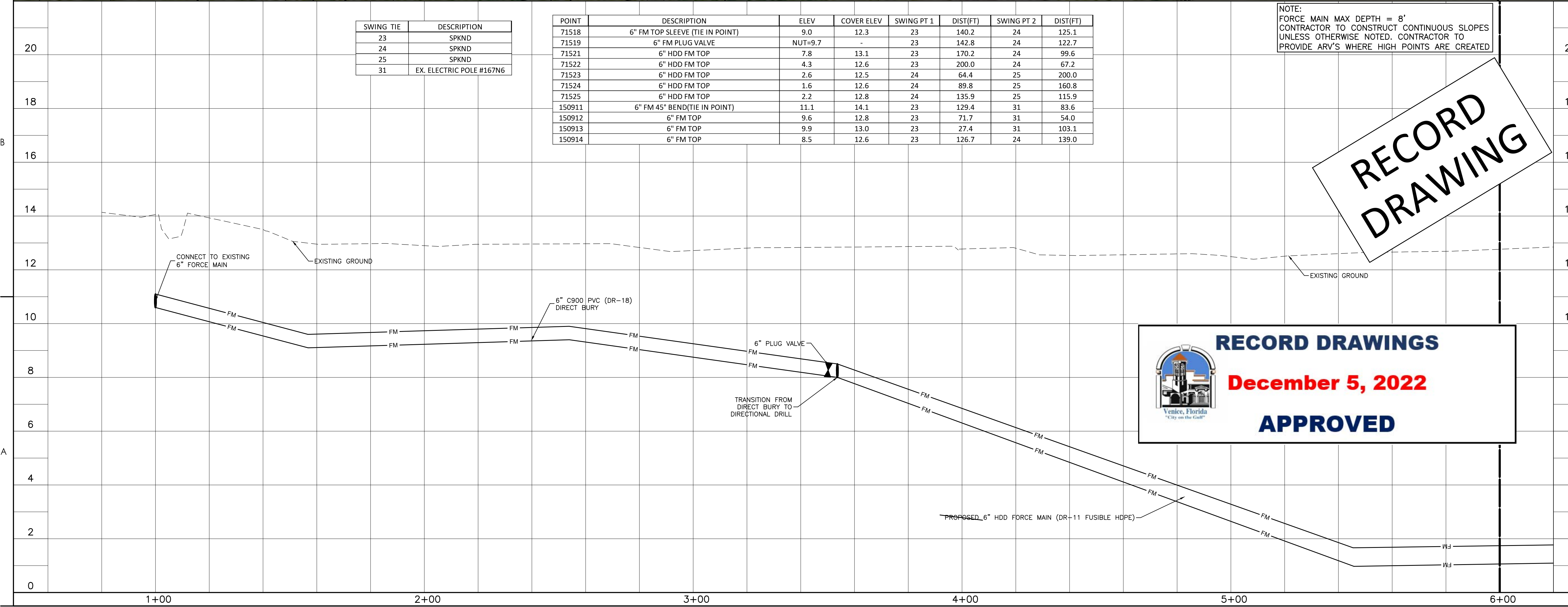
SWING TIE	DESCRIPTION
23	SPKND
24	SPKND
25	SPKND
31	EX. ELECTRIC POLE #167N6

POINT	DESCRIPTION	ELEV	COVER ELEV	SWING PT 1	DIST(FT)	SWING PT 2	DIST(FT)
71518	6" FM TOP SLEEVE (TIE IN POINT)	9.0	12.3	23	140.2	24	125.1
71519	6" FM PLUG VALVE	NUT=9.7	-	23	142.8	24	122.7
71521	6" HDD FM TOP	7.8	13.1	23	170.2	24	99.6
71522	6" HDD FM TOP	4.3	12.6	23	200.0	24	67.2
71523	6" HDD FM TOP	2.6	12.5	24	64.4	25	200.0
71524	6" HDD FM TOP	1.6	12.6	24	89.8	25	160.8
71525	6" HDD FM TOP	2.2	12.8	24	135.9	25	115.9
150911	6" FM 45° BEND (TIE IN POINT)	11.1	14.1	23	129.4	31	83.6
150912	6" FM TOP	9.6	12.8	23	71.7	31	54.0
150913	6" FM TOP	9.9	13.0	23	27.4	31	103.1
150914	6" FM TOP	8.5	12.6	23	126.7	24	139.0

NOTE:
FORCE MAIN MAX DEPTH = 6'
CONTRACTOR TO CONSTRUCT CONTINUOUS SLOPES UNLESS OTHERWISE NOTED. CONTRACTOR TO PROVIDE ARV'S WHERE HIGH POINTS ARE CREATED

RECORD DRAWING

RECORD DRAWINGS
December 5, 2022
APPROVED



Revision	By	Appd	YYYY.MM.DD

	CROSS	
1	RECORD DRAWINGS	07/19/21
0	CONSTRUCTION DOCUMENTS	11/29/20
Issued	By	Appd
File Name:	AS8 04-07	
	RTD	RTD
	Dwn.	Dgn.
		MDS
		Chkd.
		2020-08-01
		YYYY.MM.DD

Permit/Seal

MELANIE DELEHANTY SMITH, P.E.
FLORIDA LICENSE NO. 75447

Client/Project Logo

smh

Client/Project
SARASOTA COUNTY PUBLIC HOSPITAL DISTRICT

90 BED NEW HOSPITAL

2600 LAUREL ROAD
NOKOMIS, FL 34275

Title
PLAN AND PROFILE

Project No.
215614375

Scale
1" = 20'

Revision Sheet
0 4 of 10

Drawing No.

NOTE: AS-BUILT INFORMATION IS SHOWN IN BRACKETS []
 NOTE: AS-BUILT INFORMATION PROVIDED BY CONTRACTOR IS SHOWN IN PARENTHESES ()

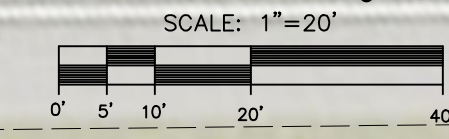
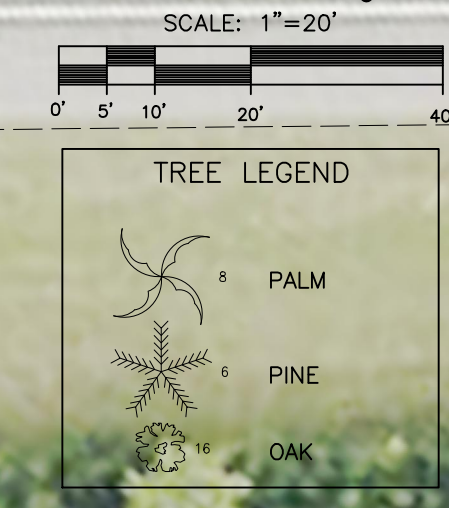
AS-BUILT DRAWING

CROSS SURVEYING, L.L.C.

CERTIFICATE OF AUTHORIZATION LB 0007977
 5265 OFFICE PARK BLVD, SUITE 101, BRADENTON, FLORIDA 34203
 (941) 748-8340 (941) 896-9938 FAX

I HEREBY CERTIFY THAT THE AS-BUILT DRAWING OF THE IMPROVEMENTS SHOWN IN BRACKETS [] UPON THE DESIGN CONSTRUCTION PLANS, IS TO THE BEST OF MY KNOWLEDGE, INFORMATION, AND BELIEF A TRUE AND CORRECT REPRESENTATION OF THE IMPROVEMENTS AS SHOWN AND WERE COLLECTED IN THE FIELD BY A REPRESENTATIVE UNDER THE DIRECT SUPERVISION OF THE SURVEYOR AND MAPPER.
 DATE OF CERTIFICATION 07-19-2021
 DATE OF FIELD SURVEY 06-15-2021

NOT VALID WITHOUT THE ORIGINAL SIGNATURE AND A SEAL OF FLORIDA LICENSED SURVEYOR AND MAPPER. THE SEAL APPEARING ON THIS DOCUMENT WAS AUTHORIZED BY GERALD D. STROOP, JR., P.S.M.
Gerald D. Stroop Jr.
 GERALD D. STROOP, JR., P.S.M.
 FLORIDA CERTIFICATE NO. 4679



NOTE: ADVANCED NOTICE AND COORDINATION WITH THE WATERFORD GOLF CLUB WILL BE REQUIRED FOR CONSTRUCTION. THE CONTACT IS ROB MCCOY, 941-356-1794, ROB@GOLFINVENICE.COM

SURVEY INFORMATION PROVIDED BY THE CITY OF VENICE DID NOT REFLECT ANY EXISTING STORMWATER FACILITIES WITHIN EASEMENT. HOWEVER, CONTRACTOR TO TAKE EXTRA CARE WHEN HDD IN THE VICINITY OF EXISTING EASEMENT

SWING TIE	DESCRIPTION
27	SPKND
28	SPKND
29	SPKND
30	SPKND

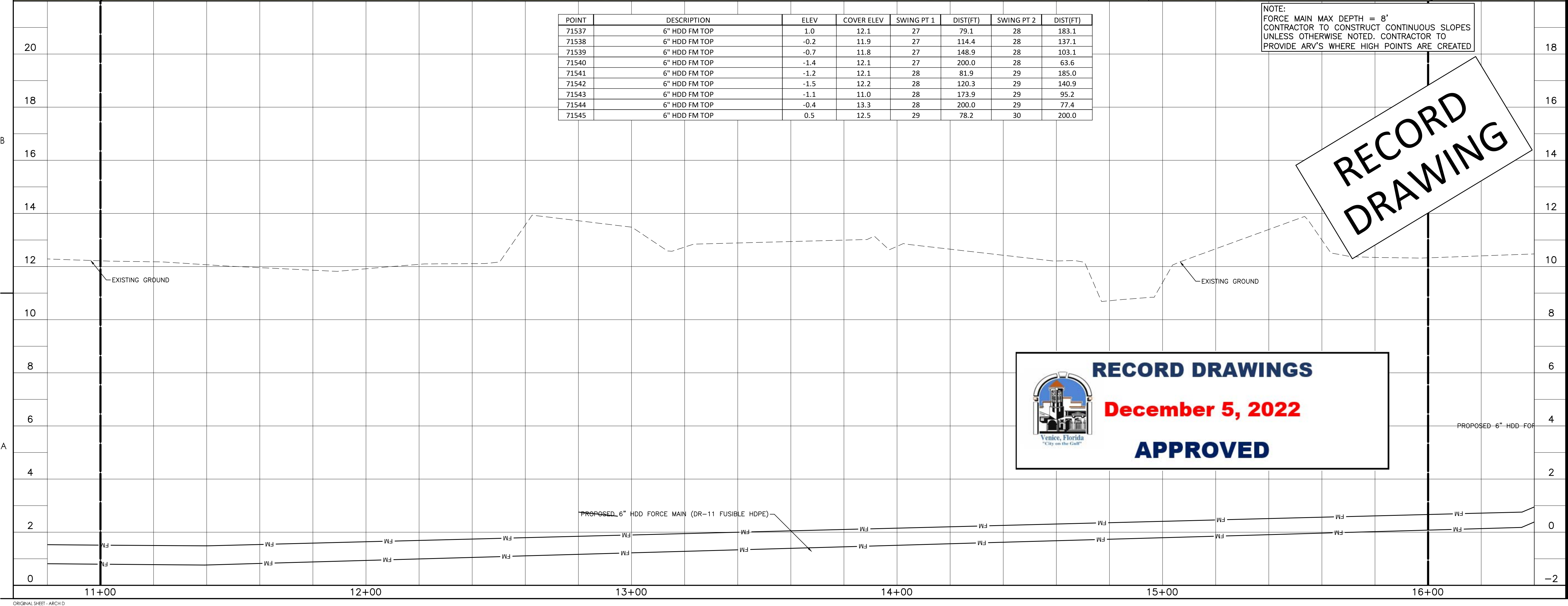
NOTE: CONTRACTOR NOT TO GO BELOW MINIMUM BEND RADIUS OF 60' FOR 6" FUSIBLE HDPE

POINT	DESCRIPTION	ELEV	COVER ELEV	SWING PT 1	DIST(FT)	SWING PT 2	DIST(FT)
71537	6" HDD FM TOP	1.0	12.1	27	79.1	28	183.1
71538	6" HDD FM TOP	-0.2	11.9	27	114.4	28	137.1
71539	6" HDD FM TOP	-0.7	11.8	27	148.9	28	103.1
71540	6" HDD FM TOP	-1.4	12.1	27	200.0	28	63.6
71541	6" HDD FM TOP	-1.2	12.1	28	81.9	29	185.0
71542	6" HDD FM TOP	-1.5	12.2	28	120.3	29	140.9
71543	6" HDD FM TOP	-1.1	11.0	28	173.9	29	95.2
71544	6" HDD FM TOP	-0.4	13.3	28	200.0	29	77.4
71545	6" HDD FM TOP	0.5	12.5	29	78.2	30	200.0

NOTE: FORCE MAIN MAX DEPTH = 6' CONTRACTOR TO CONSTRUCT CONTINUOUS SLOPES UNLESS OTHERWISE NOTED. CONTRACTOR TO PROVIDE ARV'S WHERE HIGH POINTS ARE CREATED

**RECORD
DRAWING**

RECORD DRAWINGS
 December 5, 2022
APPROVED



Stantec Consulting Services Inc.
 6900 Professional Parkway East
 Sarasota FL 34240-8414
 Tel: (941) 907-6900
 www.stantec.com

Copyright Reserved
 The Contractor shall verify and be responsible for all dimensions. DO NOT scale the drawing - any errors or omissions shall be reported to Stantec without delay.
 The Copyrights to all designs and drawings are the property of Stantec. Reproduction or use for any purpose other than that authorized by Stantec is forbidden.

Consultant

Flad Architects

Flad & Associates of Florida, Inc.
 AAC000658
 2202 N. Westshore Blvd., Ste. 125
 Tampa, FL 33607
 Tel: 813-830-6612
 www.flad.com

Flad Structural Engineers

Flad & Associates, Inc.
 27676
 644 Science Drive
 Madison, WI 53711
 Tel 608-238-2661
 Fax 608-238-6727
 www.flad.com

AEI Affiliated Engineers

LICENSE #: CA 5140
 Affiliated Engineers SE, Inc.
 777 S Harbour Island Blvd. #450
 Tampa, FL 33602
 Tel: (813) 405-3800

Revision	By	Appd	YYYY.MM.DD
1	RECORD DRAWINGS	CROSS	07/19/21
2	CONSTRUCTION DOCUMENTS	BLB	11/29/2020
Issued		By	Appd
File Name:	ASB 04-07	RTD	RTD
		Dwn.	Dsgn.
		Chkd.	MDS
			2020-08-01
			YYYY.MM.DD

Permit/Seal

 MELANIE DELEHANTY SMITH, P.E.
 FLORIDA LICENSE NO. 75447

Client/Project Logo

Client/Project
 SARASOTA COUNTY PUBLIC HOSPITAL DISTRICT
 90 BED NEW HOSPITAL
 2600 LAUREL ROAD
 NOKOMIS, FL 34275
 Title
 PLAN AND PROFILE
 Project No.
 215614375
 Revision Sheet
 0 6 of 10
 Scale
 1" = 20'
 Drawing No.

Flad Architects

Flad & Associates of Florida, Inc.
 AAC000658
 2202 N. Westshore Blvd., Ste. 125
 Tampa, FL 33607
 Tel 813-830-6612
 www.flad.com

Flad Structural Engineers

Flad & Associates, Inc.
 27676
 644 Science Drive
 Madison, WI 53711
 Tel 608-238-2661
 Fax 608-238-6727
 www.flad.com

AEI Affiliated Engineers

LICENSE #: CA 5140
 Affiliated Engineers SE, Inc.
 777 S Harbour Island Blvd. #450
 Tampa, FL 33602
 Tel: (813) 405-3800



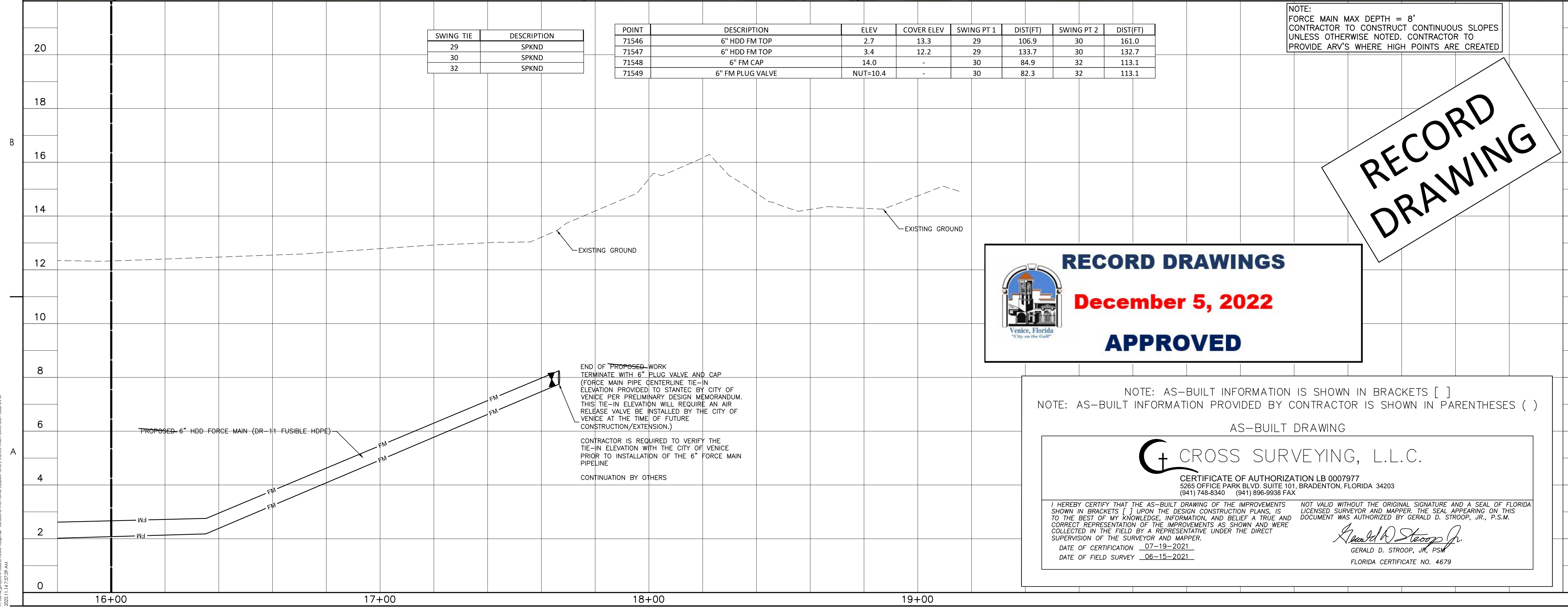
NOTE: ADVANCED NOTICE AND COORDINATION WITH THE WATERFORD GOLF CLUB WILL BE REQUIRED FOR CONSTRUCTION. THE CONTACT IS ROB MCCOY. 941-356-1794, ROB@GOLFINVENICE.COM

NOTE: CONTRACTOR NOT TO GO BELOW MINIMUM BEND RADIUS OF 60' FOR 6" FUSIBLE HDPE

SWING TIE	DESCRIPTION
29	SPKND
30	SPKND
32	SPKND

POINT	DESCRIPTION	ELEV	COVER ELEV	SWING PT 1	DIST(FT)	SWING PT 2	DIST(FT)
71546	6" HDD FM TOP	2.7	13.3	29	106.9	30	161.0
71547	6" HDD FM TOP	3.4	12.2	29	133.7	30	132.7
71548	6" FM CAP	14.0	-	30	84.9	32	113.1
71549	6" FM PLUG VALVE	NUT=10.4	-	30	82.3	32	113.1

NOTE: FORCE MAIN MAX DEPTH = 8'
 CONTRACTOR TO CONSTRUCT CONTINUOUS SLOPES UNLESS OTHERWISE NOTED. CONTRACTOR TO PROVIDE ARV'S WHERE HIGH POINTS ARE CREATED.



RECORD DRAWING

RECORD DRAWINGS
December 5, 2022
APPROVED

NOTE: AS-BUILT INFORMATION IS SHOWN IN BRACKETS []
 NOTE: AS-BUILT INFORMATION PROVIDED BY CONTRACTOR IS SHOWN IN PARENTHESES ()

AS-BUILT DRAWING

CROSS SURVEYING, L.L.C.

CERTIFICATE OF AUTHORIZATION LB 0007977
 5265 OFFICE PARK BLVD, SUITE 101, BRADENTON, FLORIDA 34203
 (941) 748-8340 (941) 896-9938 FAX

I HEREBY CERTIFY THAT THE AS-BUILT DRAWING OF THE IMPROVEMENTS SHOWN IN BRACKETS [] UPON THE DESIGN CONSTRUCTION PLANS, IS TO THE BEST OF MY KNOWLEDGE, INFORMATION, AND BELIEF A TRUE AND CORRECT REPRESENTATION OF THE IMPROVEMENTS AS SHOWN AND WERE COLLECTED IN THE FIELD BY A REPRESENTATIVE UNDER THE DIRECT SUPERVISION OF THE SURVEYOR AND MAPPER.

DATE OF CERTIFICATION 07-19-2021
 DATE OF FIELD SURVEY 06-15-2021

NOT VALID WITHOUT THE ORIGINAL SIGNATURE AND A SEAL OF FLORIDA LICENSED SURVEYOR AND MAPPER. THE SEAL APPEARING ON THIS DOCUMENT WAS AUTHORIZED BY GERALD D. STROOP, JR., P.S.M.

Gerald D. Stroop, Jr.
 GERALD D. STROOP, JR., P.S.M.
 FLORIDA CERTIFICATE NO. 4679

Revision: _____ By: _____ Appd: _____ YYYY.MM.DD

1 RECORD DRAWINGS CROSS 07/19/21
 0 CONSTRUCTION DOCUMENTS BILL 11/29/22

Issued: _____ By: _____ Appd: _____ YYYY.MM.DD

File Name: AS8 04-07 RTD RTD MDS 2020-08-01
 Dwn. Dgn. Chkd. YYYY.MM.DD

Permit/Seal: _____

MELANIE DELHANTY SMITH, P.E.
 FLORIDA LICENSE NO. 75447

Client/Project Logo

smh

Client/Project
 SARASOTA COUNTY PUBLIC HOSPITAL DISTRICT

90 BED NEW HOSPITAL

2600 LAUREL ROAD
 NOKOMIS, FL 34275

Title
 PLAN AND PROFILE

Project No.
 215614375

Revision Sheet
 0 7 of 10

Scale
 1" = 20'

Drawing No.

I:\New\projects\baulard road hospital - sarasota\memoranda\calculations\force main extension\04a.dwg
 2021.11.14 2:37:39 AM

