



Irrigation

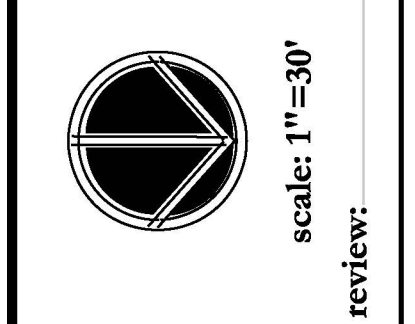
Qty	Symbol	Description	Part #	Pressure	Flow	Radius
22	○	Irritrol Systems 533-180	533	30	1	0
27	○	Rain Bird UXB-360-1032	UXB-360-1032	15	0.47	0.7
137	○	Hunter 8A-180 - PROS-04	8A PROS 4	30	0.58	8
90	○	Hunter 8A-90 - PROS-04	8A PROS 4	30	0.29	8
4	○	Hunter 10A-180 - PROS-04	10A PROS 4	30	0.98	10
6	○	Hunter 10A-90 - PROS-04	10A PROS 4	30	0.49	10
15	○	Hunter 12A-180 - PROS-04	12A PROS 4	30	1.26	12
30	○	Hunter 12A-90 - PROS-04	12A PROS 4	30	0.63	12
2	○	Hunter 15A-180 - PROS-04	15A PROS 4	30	1.86	15
31	○	Hunter 15A-90 - PROS-04	15A PROS 4	30	0.93	15
58	○	Hunter LCS-515 - PROS-04	LCS-515	30	0.65	15
1	○	Hunter RCS-515 - PROS-04	RCS-515	30	0.65	15
57	○	Hunter 17A-180 - PROS-04	17A PROS 4	30	2.4	17

2	○	Hunter 17A-270 - PROS-04	17A PROS 4	30	3.6	17
25	○	Hunter 17A-90 - PROS-04	17A PROS 4	30	1.2	17
48	○	Hunter PGP-07 - PGP-ADJ	07	40	3	30
60	○	Hunter SS-530 - PROS-04	SS-530	30	1.3	30
25	○	Rain Bird 100PESB-R	100PESB-R			
13	○	Rain Bird XCZ-100-PRBR	XCZ-100-PRBR			
2	○	Hunter IC-3600-PP	IC-3600-PP			
2	○	Rain Bird RSD-BEx	RSD-BEx			
938.73	—	Schedule 40 2"	ISP2			
67.74	—	Schedule 40 4"	ISP4			
1	—	1 inch meter				
378.7 (ft)	—	Lateral - Class 200 1 1/2"				
1631.78 (ft)	—	Lateral - Class 200 1 1/4"				
2439.32 (ft)	—	Lateral - Class 200 1"				
2330.17 (ft)	—	Lateral - Class 200 3/4"				
5951.33 (ft)	—	Lateral - Class 315 1/2"				
470.09 (ft)	—	Lateral - Poly 80 1/2"				
2176.43 (ft)	—	Mainline - Schedule 40 1 1/4"	ISP114			
4092.7 (ft)	—	TLDL9-12	TLDL9-12	0	0	0

General

Qty	Symbol	Description	Part #
2188.3 (ft)	—	14 Gauge - Common White	0

sheet number  
**IR 1**  
of  
**1**

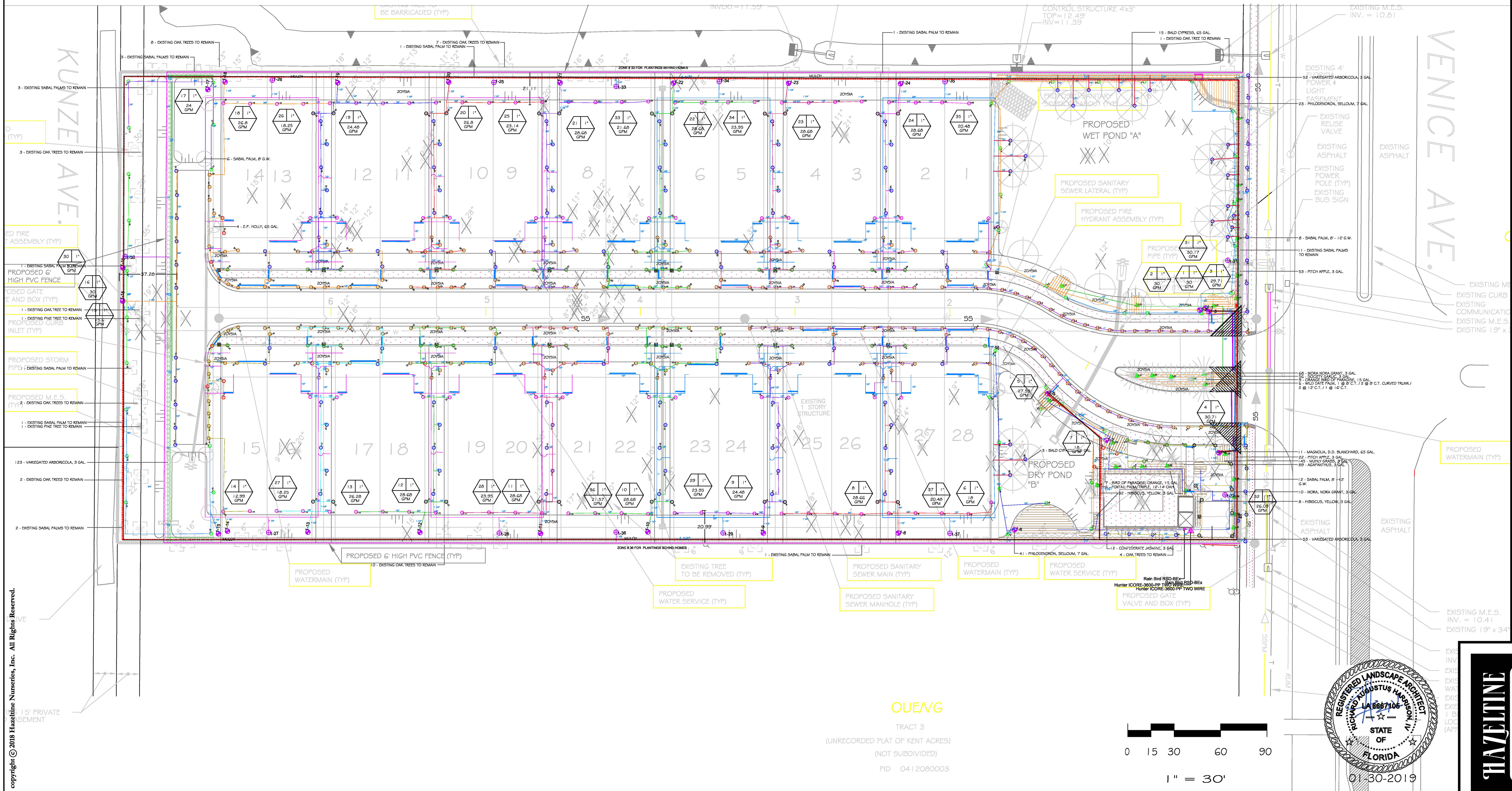


design: c. kopp  
drawn: ck  
date: 09.18.18  
revised: 1.28.2019 rnh  
01.30.19 ck  
job#: 078718

site information taken from  
any other survey information  
survey provided by:  
PEIER  
10225 Ulmeron Road, Suite 4D  
Lafayette, LA 70507  
727-408-5207  
12.05.2018

A Proposed Landscape Plan for:  
**CASSATA PLACE**  
1755 east venice avenue  
venice, florida 34292

2401 North River Road  
Venice, Florida 34292  
P.O. Box 236  
Venice, Florida 34284-0236  
phone: 941.485.1272  
fax: 941.488.6236  
www.hazeltinenurses.com  
info@hazeltinenurses.com



OU/AVG

TRACT 3  
(UNRECORDED PLAT OF KENT ACRES)  
(NOT SUBDIVIDED)  
PID 0412080003



1" = 30'



01-30-2019

