

Venice Beach

Sea Turtle Sculpture

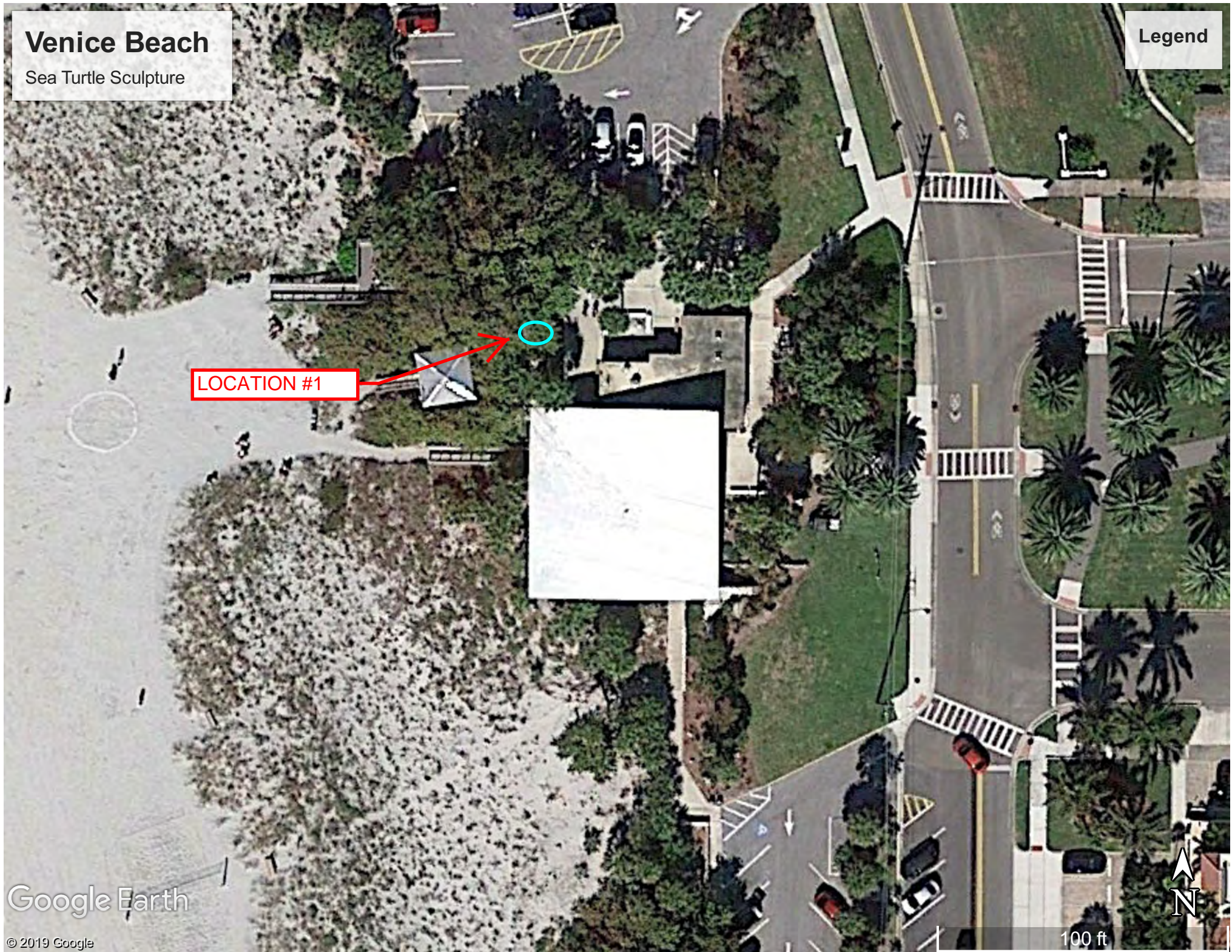
Legend

LOCATION #1

Google Earth

© 2019 Google

100 ft





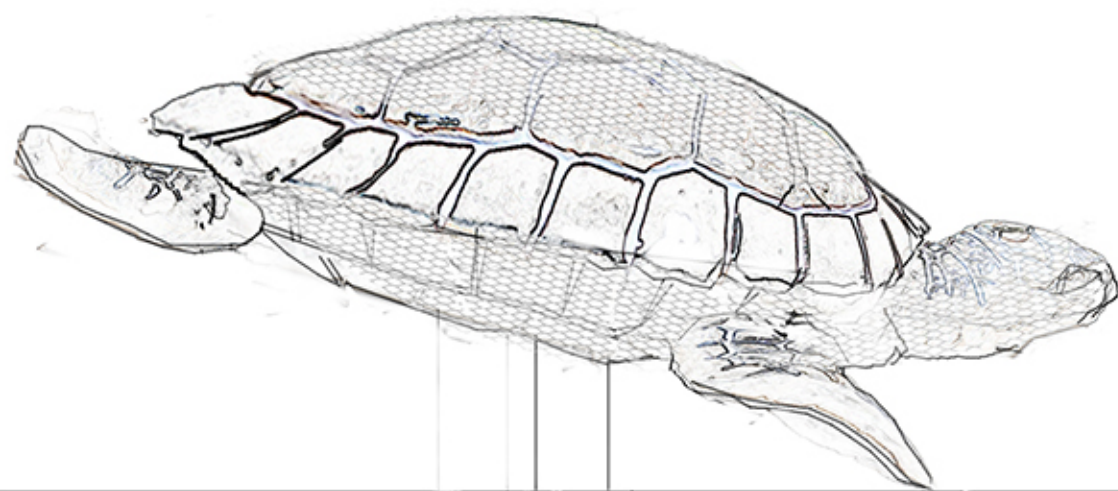
PROPOSED LOCATION - VENICE BEACH



MODEL

SEA TURTLE RECYCLING PROJECT

Jeffrey W. Dean
SCENIC DESIGNER



SEA TURTLE RECYCLING PROJECT

Scale 1/2" = 1' 0"

Jeffrey W. Dean
SCENIC DESIGNER

PROTECT OUR PLANET SEA TURTLE SCULPTURE PROJECT

WHAT IS MARINE DEBRIS?

Marine debris is any solid material that is directly or indirectly disposed of or abandoned into the marine environment.

WHY IS MARINE DEBRIS A PROBLEM?

Marine debris is dangerous because it threatens marine life, the Gulf of Mexico and people. Plastics break down into smaller pieces but never really break down completely. These microplastics remain in the marine and coastal environment.

- Marine life may eat these plastics or become entangled.
- It degrades the quality and health of ocean habitats.
- Beaches may become polluted.



IT STARTS IN
PARKS

941-861-5000 | scgov.net [f @SRQCountyPlay](https://www.facebook.com/SRQCountyPlay)
Preserve. Recreate. Connect. Respect.

To avoid risk of injury, do not climb, sit or stand on the sculpture.
The surface temperature of this artwork may be hot.

HOW CAN YOU HELP?

GET INVOLVED NOW!

Place empty plastic bottles or aluminum cans in the sea turtle sculpture.



REDUCE. REUSE. RECYCLE.
PACK IN. PACK OUT.

25 GULF COAST
COMMUNITY
FOUNDATION



 **Sarasota County**

This sculpture was graciously donated by the Gulf Coast Community Foundation