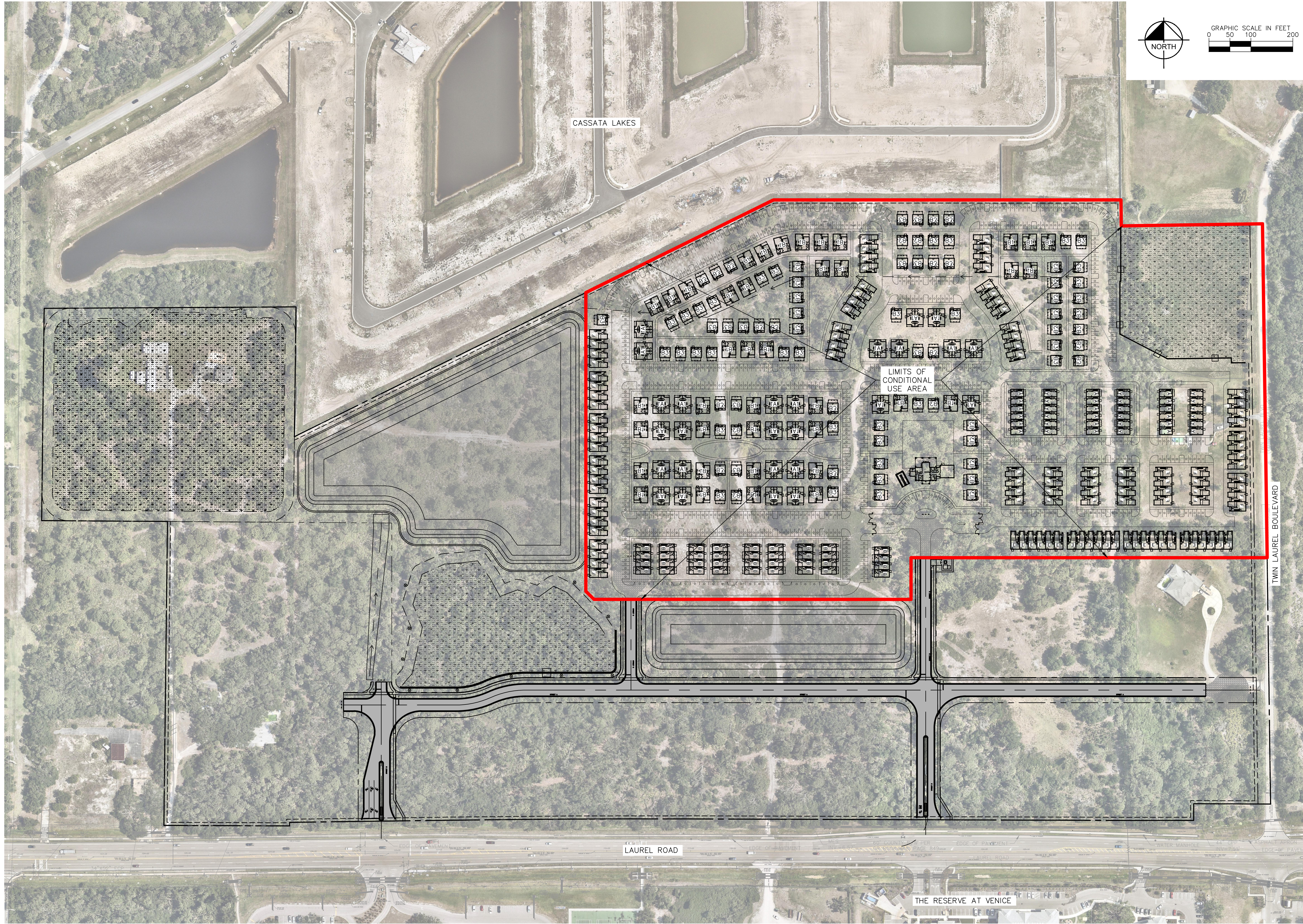


This document, together with the concepts and designs presented herein, is intended only for the specific purpose and client for which it was prepared. Reuse of and improper reliance on this document without written authorization and adaptation by Kimley-Horn and Associates, Inc. shall be without liability to Kimley-Horn and Associates, Inc.



No.	REVISIONS	DATE	BY

**Kimley»Horn**  
 © 2023, KIMLEY-HORN AND ASSOCIATES, INC.  
 1777 MAIN STREET, SUITE 200, SARASOTA, FL 34236  
 PHONE: 941-379-7600  
 WWW.KIMLEY-HORN.COM CA 00035106

LICENSED PROFESSIONAL  
 ANDREW J. PLUTA, P.E.  
 FLORIDA LICENSE NUMBER  
 92225

KHA PROJECT  
 248023001

DATE  
 AUGUST 2023

SCALE AS SHOWN

DESIGNED BY EAM

DRAWN BY AJP

CHECKED BY TMS DATE: \_\_\_\_\_

**CONDITIONAL  
 USE PLAN**

HURT ASSEMBLAGE - PHASE 0  
 PREPARED FOR  
 2001 LAUREL LLC

CITY OF VENICE FLORIDA