

July 8, 2025

CURRY CREEK MAINTENANCE UPDATE

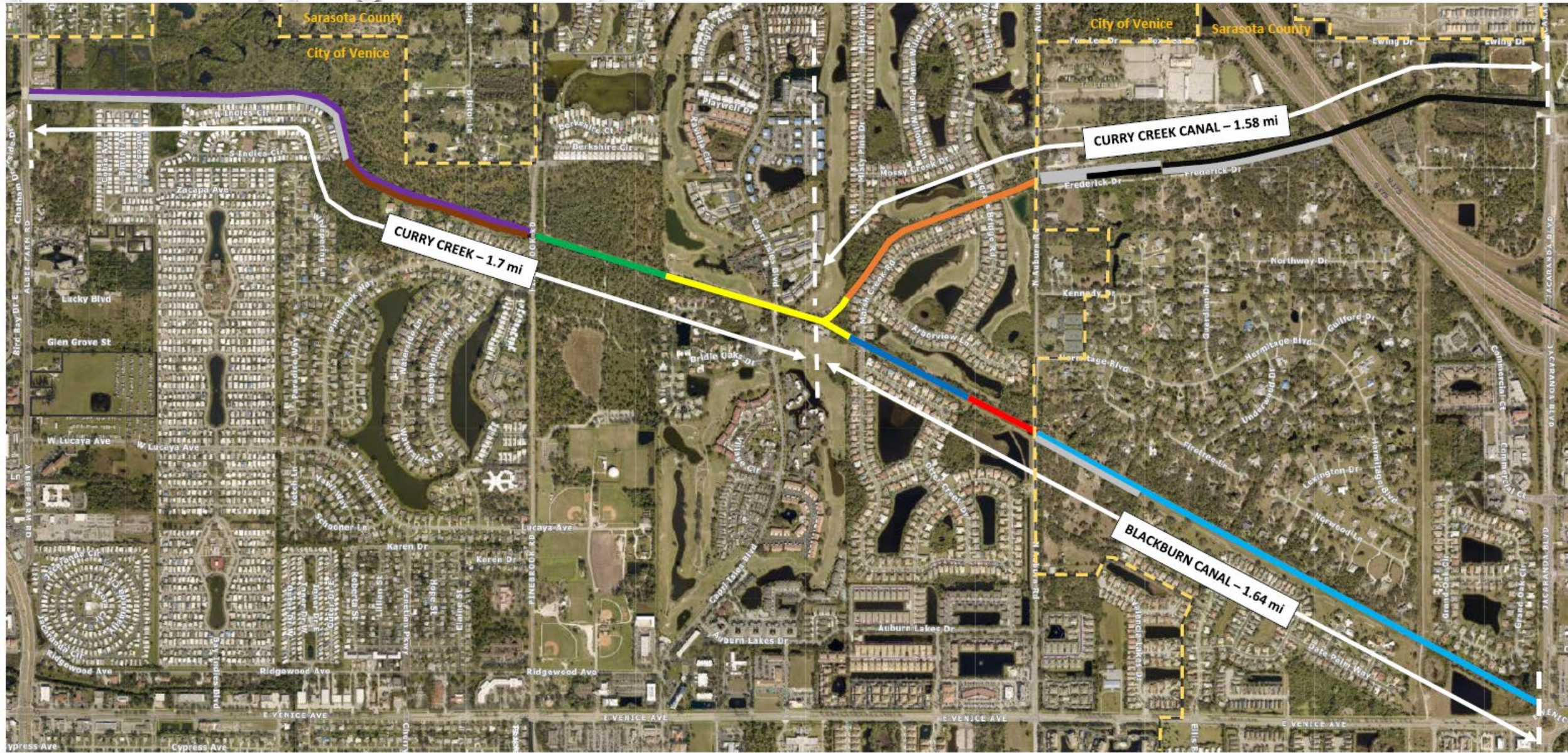
JON KRAMER, PE, ACTING CITY ENGINEER

STEVE BERENS, PE, STORMWATER ENGINEER

Introduction

- Curry Creek maintenance responsibility is fractured and includes County, City, and private property owners
- The City has been working with the County and Central Venice Coalition to identify ownership and maintenance responsibility and to have the ditch maintained

Curry Creek Maintenance Responsibilities



Ownership and Maintenance Responsibilities for Curry Creek, Blackburn Canal and Curry Creek Canal between Albee Farm Road and Jacaranda Blvd.

Red (0.15 mi):

Ownership – City of Venice through dedication in Sawgrass Unit 5 plat (Tract U).

PUBLIC:

Said Partnership does hereby dedicate and set apart the Public Utility Easements; Public Utility and Maintenance Access Easements; Lot Line Utility and Drainage Easements; Tracts "Q", "R", "S" and "T", for Public Utility Easements; Tract "V" for Public Drainage Easement; Tracts "P" and "U" for Public Park and Public Drainage Easement, as shown and described on this plat for said uses and purposes to the City of Venice forever.

Maintenance – Sarasota County through easement OR 2001069454, shown in Sawgrass Unit 5A Plat

Dark Blue (0.26 mi):

Ownership - City of Venice through dedication in Sawgrass Unit 5 plat (Tract V)

PUBLIC:

Said Partnership does hereby dedicate and set apart the Public Utility Easements; Public Utility and Maintenance Access Easements; Lot Line Utility and Drainage Easements; Tracts "Q", "R", "S" and "T", for Public Utility Easements; Tract "V" for Public Drainage Easement; Tracts "P" and "U" for Public Park and Public Drainage Easement, as shown and described on this plat for said uses and purposes to the City of Venice forever.

Maintenance – City of Venice City of Venice through dedication in Sawgrass Unit 5 plat (Tract V); No other known instrument specific to maintenance like Tract U

Yellow (0.43 mi):

Ownership – City of Venice City of Venice through dedication in Capri Isles Unit 1 Plat

Maintenance – City of Venice City of Venice through dedication in Capri Isles Unit 1 Plat; No other known instrument specific to maintenance

FRANK E. PELLEGRIN AND JOE BELFIORE AS TRUSTEES UNDER A TRUST AGREEMENT DATED THE 26TH DAY OF JANUARY 1966 FILED FOR RECORD IN OFFICIAL RECORD BOOK 568, PAGES 839 - 881 INCLUSIVE OF THE PUBLIC RECORDS OF SARASOTA COUNTY, FLORIDA, DO HEREBY DEDICATE AND SET APART ALL OF THE STREETS, ALLEYS, WALKS, THOROUGHFARES, REAR AND SIDE LOT LINE UTILITY AND DRAINAGE EASEMENTS, PARKS AND OTHER OPEN SPACES, CANALS AND DRAINAGE OR OTHER EASEMENTS SHOWN ON THIS PLAT, FOR SAID USES AND PURPOSES TO THE CITY OF VENICE FOREVER.

Green (0.26 mi):

Ownership – City of Venice City ownership of Pinebrook/Wellfield Park Property

Maintenance – City of Venice City ownership of Pinebrook/Wellfield Park Property; No other known legal instrument specific to maintenance

Purple (north side of Curry Creek 1.1 mi):

Ownership – Sarasota County ownership of the Curry Creek Preserve/Regional Offsite Mitigation Area Property

Maintenance – Sarasota County ownership of the Curry Creek Preserve/Regional Offsite Mitigation Area Property; A 2001 property survey of the County property on the north side of Curry Creek provides specific boundaries of this area.

Brown (South Side of Curry Creek 0.4 mi)

Ownership – Sarasota County and City of Venice through dedication in Pinebrook South Unit 3 Plat

CERTIFICATE OF OWNERSHIP AND DEDICATION

STATE OF FLORIDA) ss
COUNTY OF SARASOTA)

TIDEWATER VILLAGE, LTD., A FLORIDA LIMITED PARTNERSHIP, BY ITS GENERAL PARTNER, NED T. SMITH, ACTING BY AND WITH THE AUTHORITY OF THE SAID LIMITED PARTNERSHIP, CERTIFIES OWNERSHIP BY SAID LIMITED PARTNERSHIP OF THE PROPERTY DESCRIBED HEREON, AND KNOWN AS PINEBROOK SOUTH, UNIT III, AND DOES HEREBY DEDICATE AND SET APART ALL OF THE STREETS, WALKS, ALLEYS, THOROUGHFARES, REAR AND SIDE LOT LINE UTILITY AND DRAINAGE EASEMENTS, PARKS AND OTHER OPEN SPACES, CANALS AND DRAINAGE OR OTHER EASEMENTS SHOWN ON THIS PLAT, FOR SAID USES AND PURPOSES, TO THE COUNTY OF SARASOTA, AND THE CITY OF VENICE, FOREVER.

IN WITNESS WHEREOF, THE UNDERSIGNED LIMITED PARTNERSHIP HAS CAUSED THESE PRESENTS TO BE EXECUTED BY ITS GENERAL PARTNER, THIS 30 DAY OF JUNE, A.D., 1976.

Maintenance – Sarasota County and the City of Venice.

Orange (0.45 mi):

Ownership – Sawgrass Community Association, Inc. as specified in Sawgrass Unit 1 Plat. Tracts W-5 and W-6.

Maintenance – Sawgrass Community Association, Inc. as specified in Sawgrass Unit 1 Plat. Tracts W-5 and W-6.

Tracts "W-1", "W-2", "W-3", "W-4", "W-5", "W-6", "W-7", "W-8", "W-9" and "W-10, is hereby reserved for Sawgrass Community Association, Inc., its successors and assigns for Private Conservation and Drainage Easements, and are the perpetual maintenance obligation of Sawgrass Community Association, Inc, its successors and assigns;

Black (1.04 mi):

Ownership – Sarasota County various portions of the area west of I75 and everything east of I75. It is believed that the County has an easement over all areas west of 75 and official records have been requested from the Clerk's Office to verify. Additional details are being researched regarding the other areas west of I75 and this document will be updated when they are available.

Maintenance – Sarasota County and/or the adjacent private property owner. Additional details are being researched regarding the areas west of I75 and this document will be updated when they are available.

Light Blue (0.87 mi):

Ownership – Sarasota County through dedication in adjacent subdivision plats, easements and other designated ROW. There are many plat dedications and separate legal instruments that encompass the County's ownership or rights in these areas so clips of the specific language are not provided here for brevity but can be provided upon request.

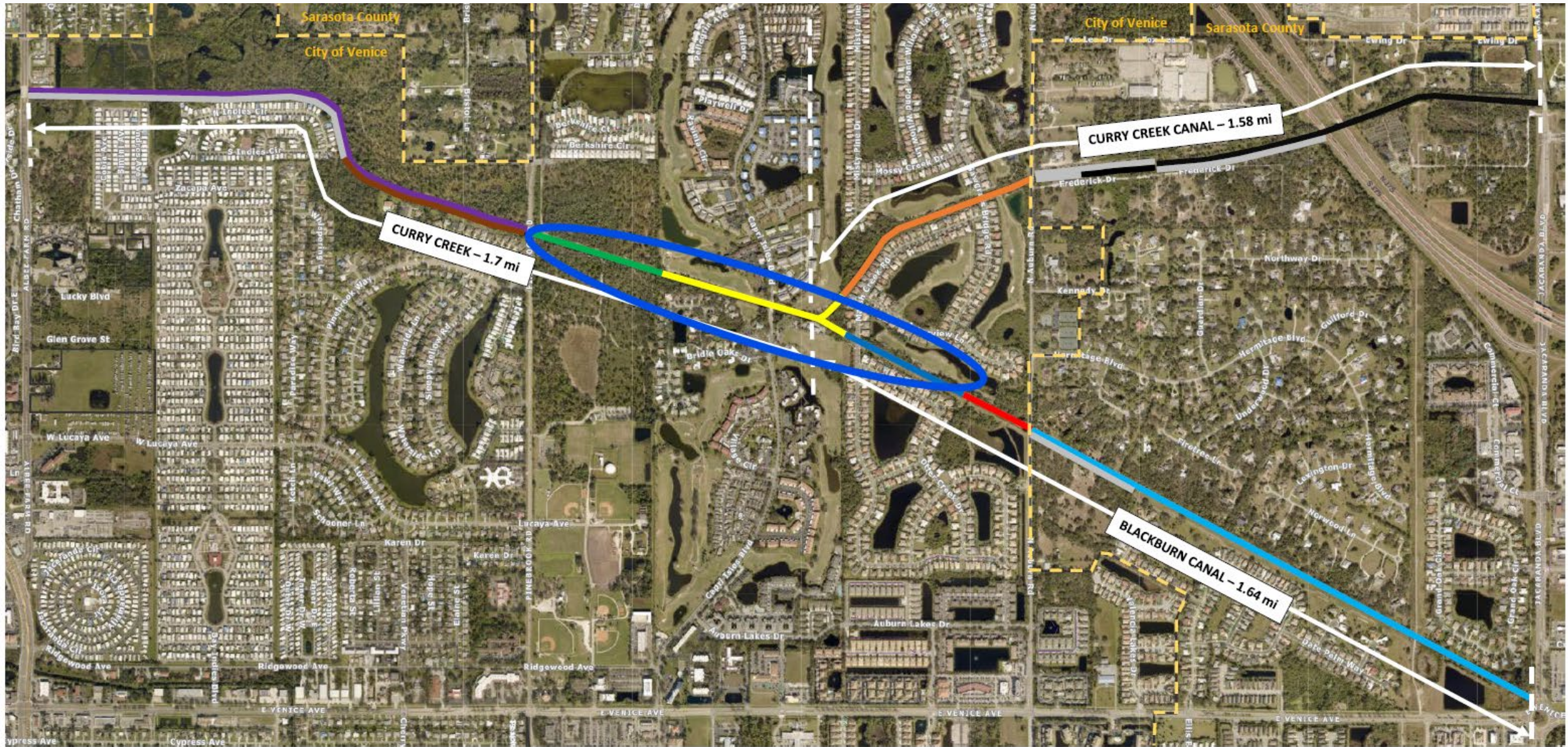
Maintenance – Sarasota County through dedication in adjacent subdivision plats, easements and other designated ROW. There are many plat dedications and separate legal instruments that encompass the County's maintenance responsibilities in these areas so clips of the specific language are not provided here for brevity but can be provided upon request.

Grey (distances included in above areas):

Ownership – Property owners adjacent to the side of the canal where the line is located.

Maintenance – Property owners adjacent to the side of the canal where the line is located; No other known legal instrument specific to maintenance.

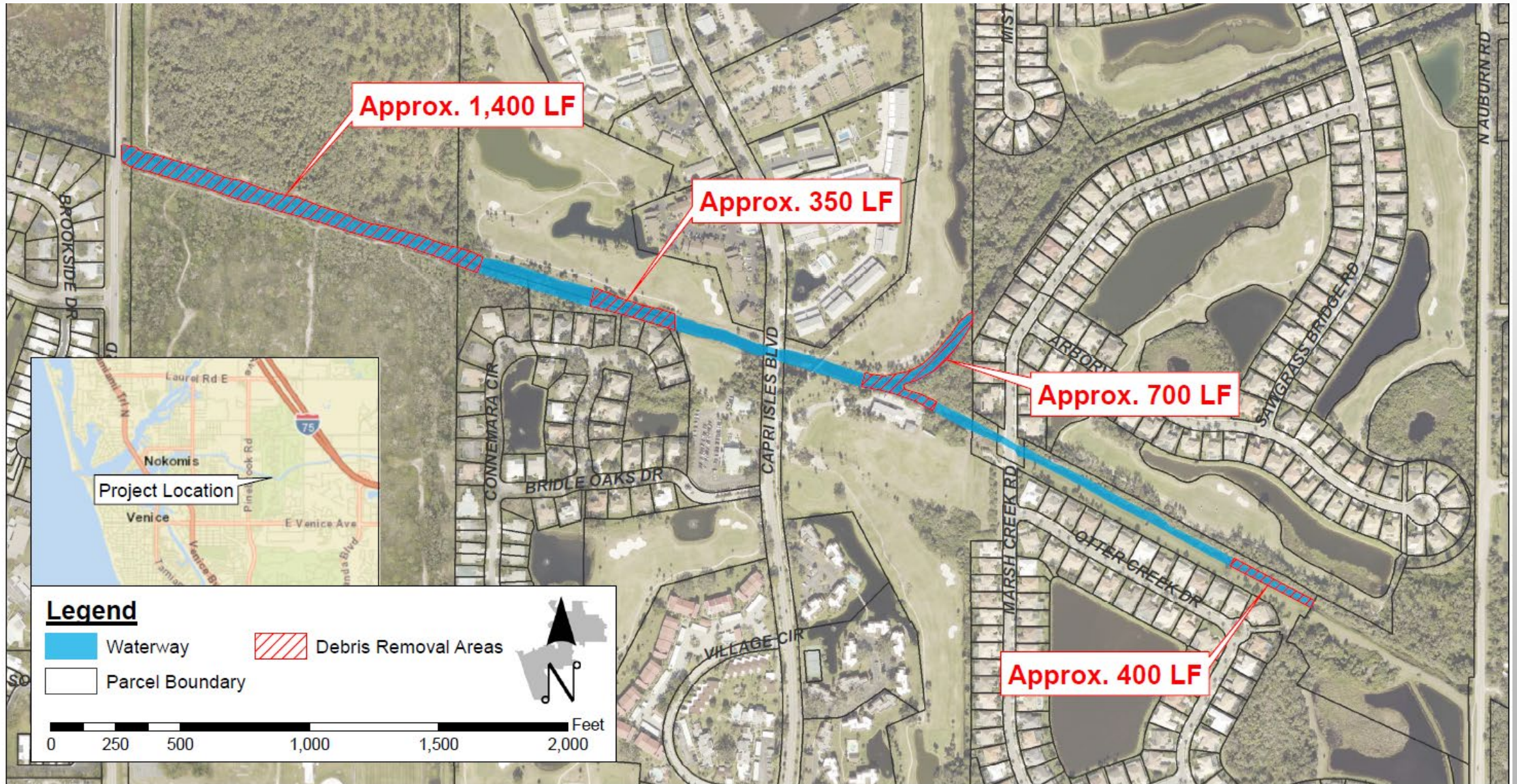
City-Maintained Portion of Curry Creek



Curry Creek Maintenance by City of Venice

- Quarterly maintenance: invasives treatment, aquatic vegetation removal, small debris removal (objects under a certain weight), minor trimming of overhanging vegetation, bank mowing in certain areas, mangrove trimming in certain areas
- The City has been awarded a Natural Resources Conservation Service (NRCS) grant to complete debris removal within portions of Curry and Hatchett Creeks. This project will remove vegetative debris (any size) attributed to Hurricane Milton. Based on field inspections by NRCS, a budget of up to \$360,525.00 was identified as eligible with the entire budget amount federally funded

NRCS Grant Debris Removal Areas



Maintenance Responsibility

Exchange Discussions with Sarasota County

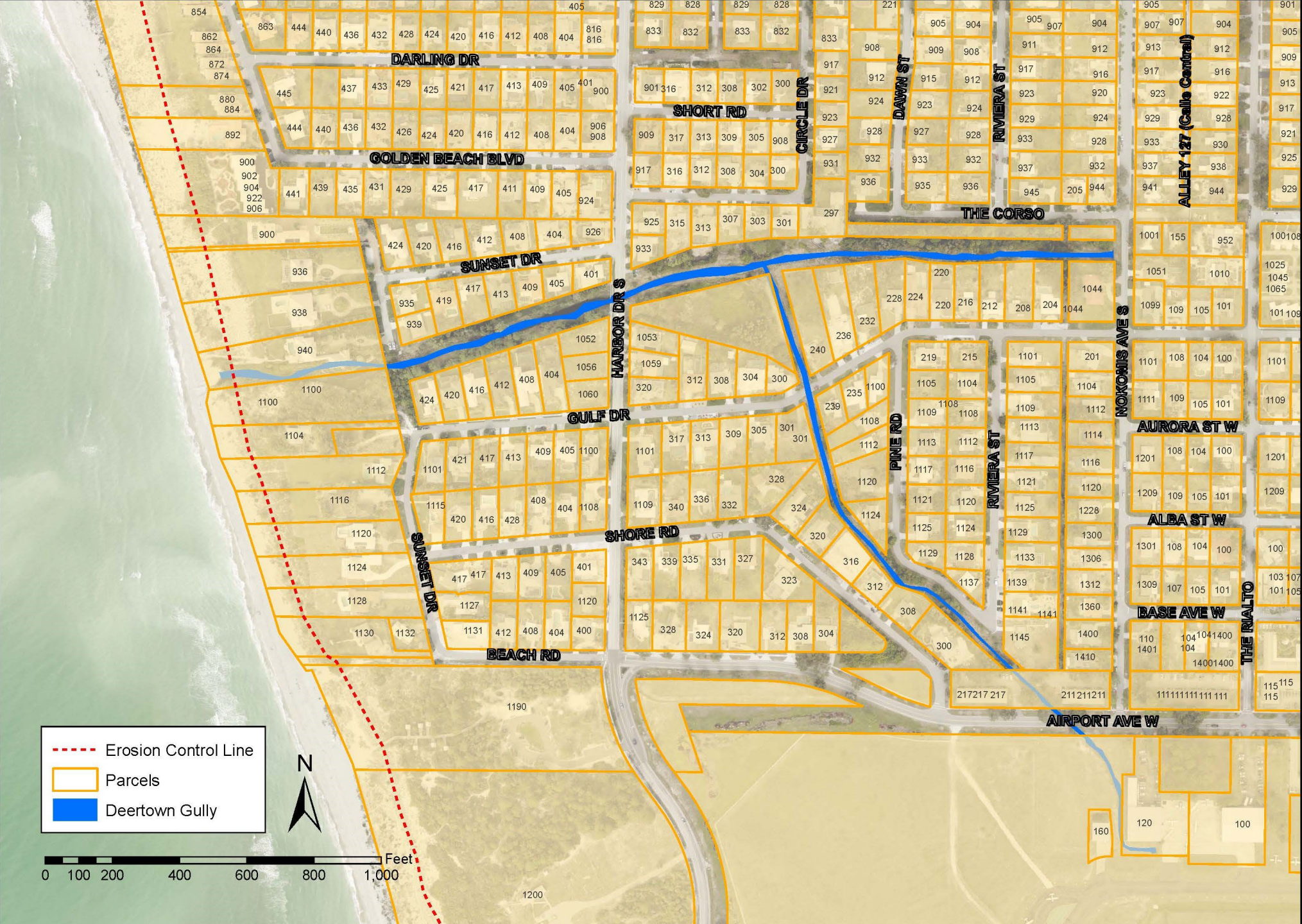
- Potential maintenance exchange opportunity of Curry Creek for Deertown Gully through interlocal agreement
- County staff are open to this discussion; final approval required by both City Council and Board of County Commissioners
- The Sawgrass portion is privately owned and maintained, therefore it cannot be included in any maintenance exchange with the County
- Any exchange would need to create mutual City and County benefit to be successful

Current Deertown Gully Maintenance Responsibilities

Outfall at the beach:
Monitored and opened as needed by City

Right-of-Way portion:
Maintained by Sarasota County (Bi-annual schedule)

Private Property:
No maintenance by any public entity



Next Steps

- The City is preparing a proposal for the potential terms of the maintenance exchange
- NRCS grant-funded debris removal work is expected to begin in the Fall