

Local Register of Historical
Resources Nomination for the
Venice Beach Pavilion





Address: 101 The Esplanade South

Date Built: 1964

Architect: William Lindh and Cyril Tucker

Builder: City of Venice

Architectural Style: Mid-Century Modern/Googie

Nomination Categories:

1. Are significant in the City's history and culture and possess an integrity of location, design, setting, materials, workmanship, or association;
2. Are associated with distinctive elements of cultural, social, political, economic, scientific, religious, prehistoric, paleontological, and architectural history that have contributed to the pattern of history in the community, the city, the county, the state, the region, or the nation;
4. Embody the distinctive characteristics of a type, period, style or method of construction or work of a master; or possess high artistic value; or represent a distinguishable entity whose components may lack individual distinction;

Section III

The Venice Beach Pavilion is significant for its architecture, engineering features, history, and ties to a locally prominent architect and engineer. It was completed in 1964 to replace the beach casino that was aged and in disrepair. The firm of William Lindh & Cyril Tucker, which had a series of prominent commissions in the city, was awarded the contract to design a modernistic structure for a city looking to the future after World War II. They proposed a 6500 square foot area consisting of a 64-foot square separate hyperbolic paraboloid roof shading a concession stand and a shower/changing structure.

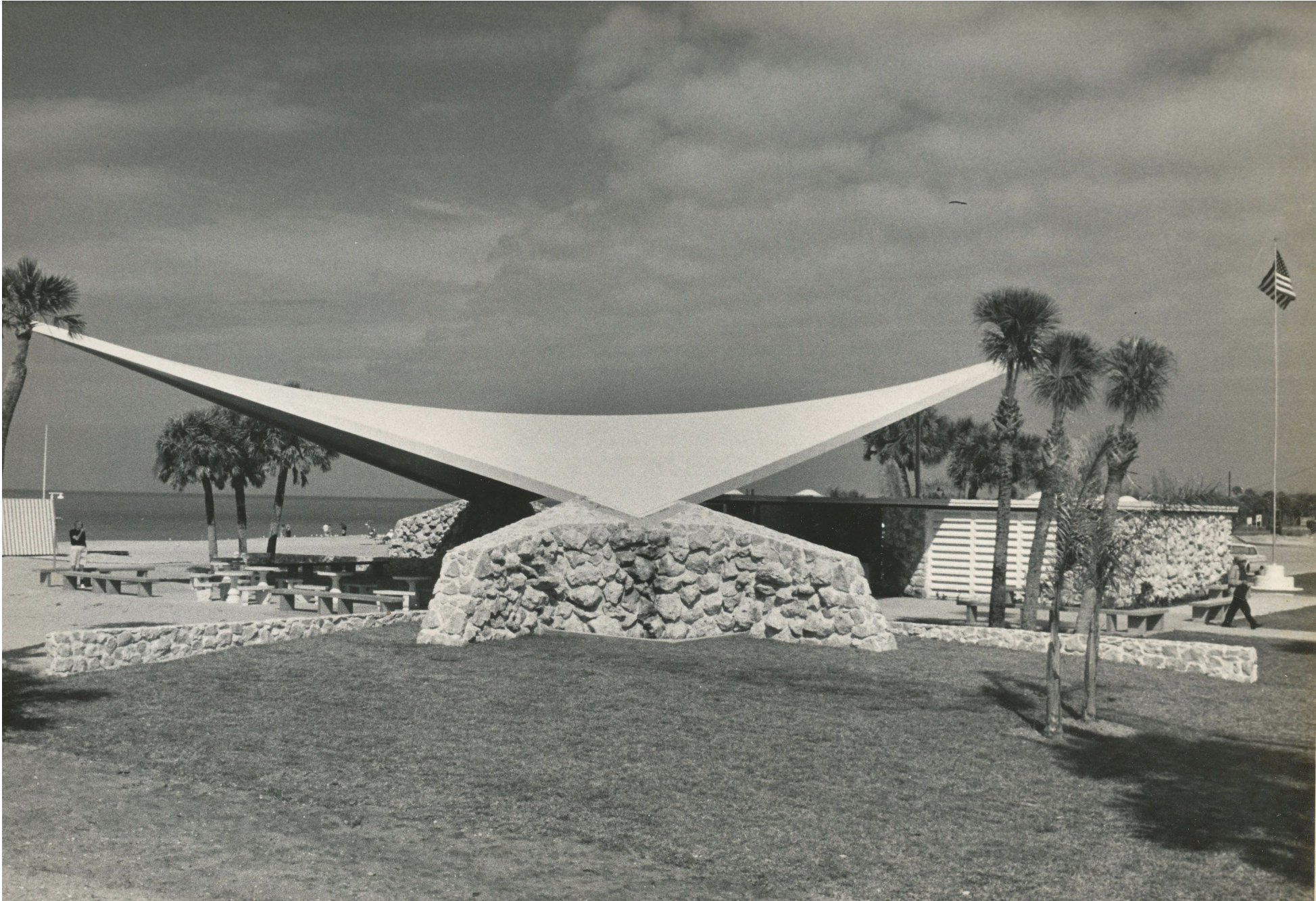


David Hamilton, chair of the Venice Beach Committee, shows off a model of the proposed beach pavilion in 1963.

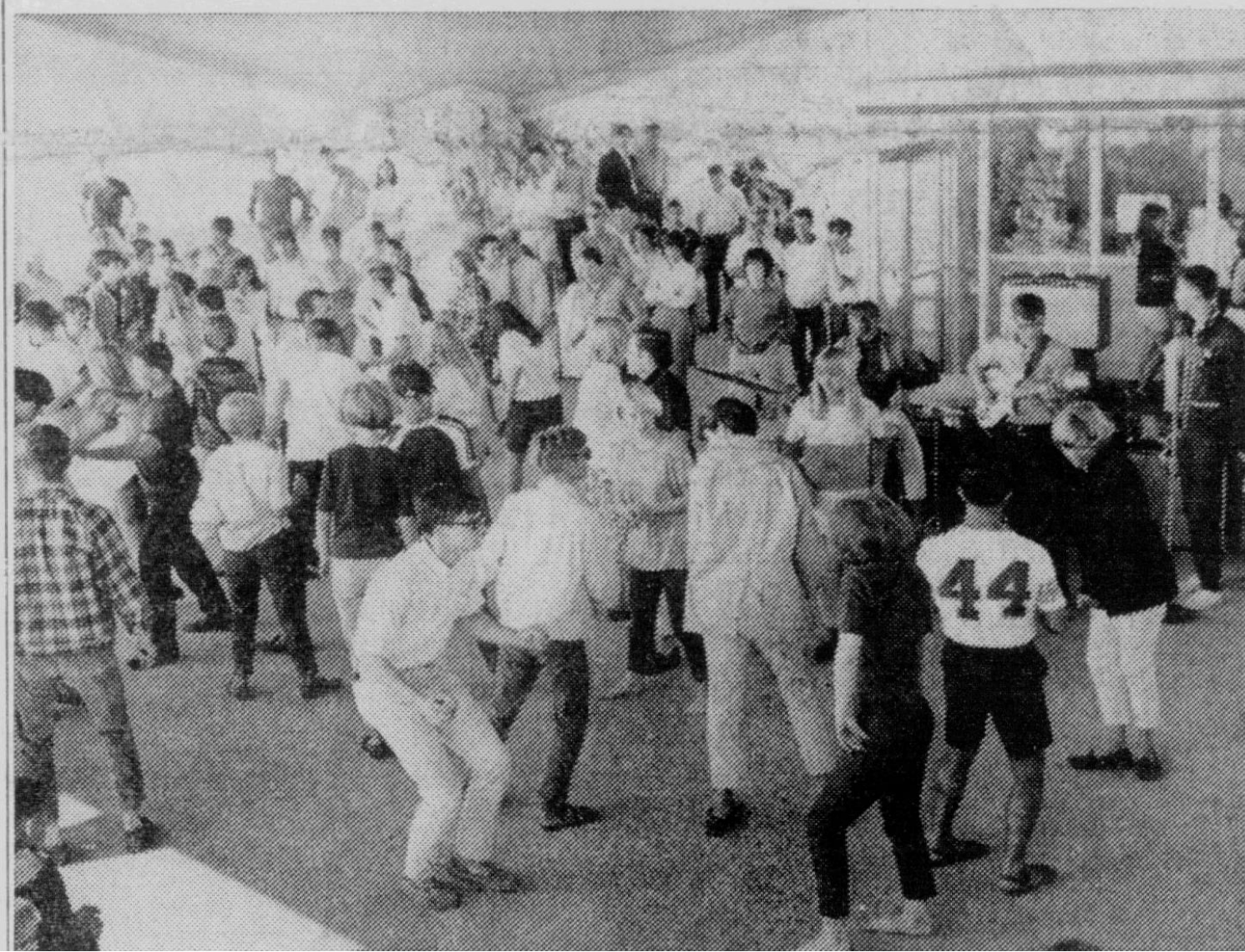




Construction begins on the hyperbolic paraboloid roof, ca. 1963.



The Beach Pavilion after it opened in 1964.



Venice's teen population enjoy a dance at the beach pavilion in 1967.

Present Day

