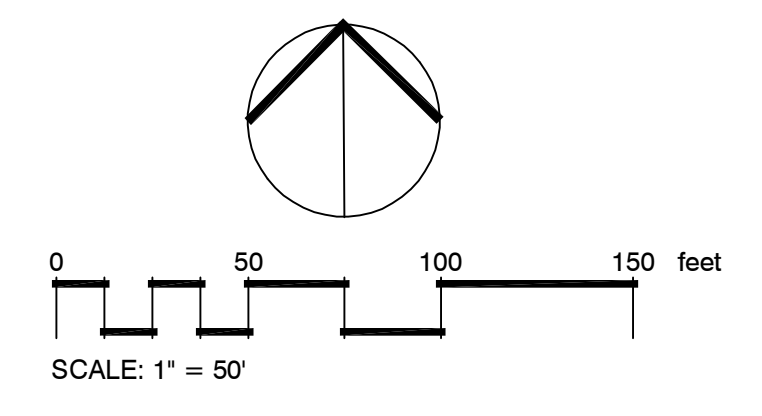
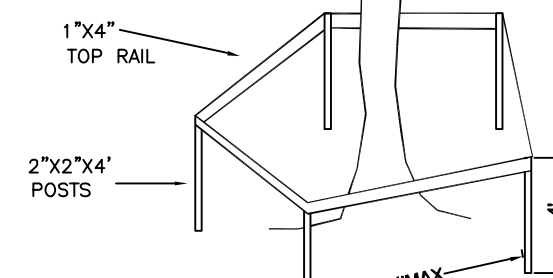


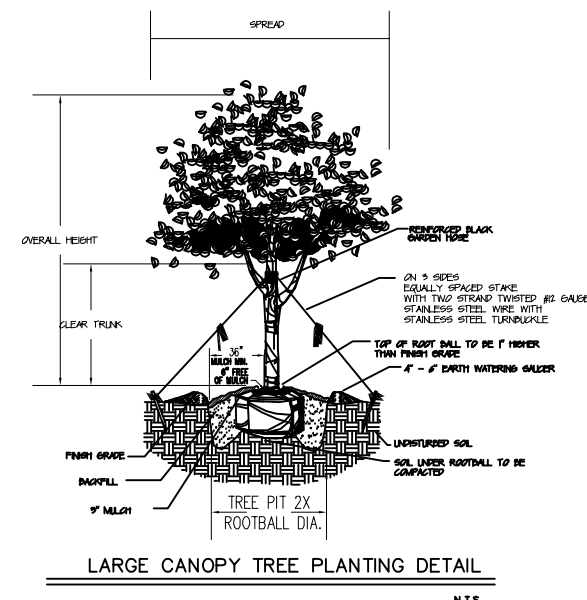
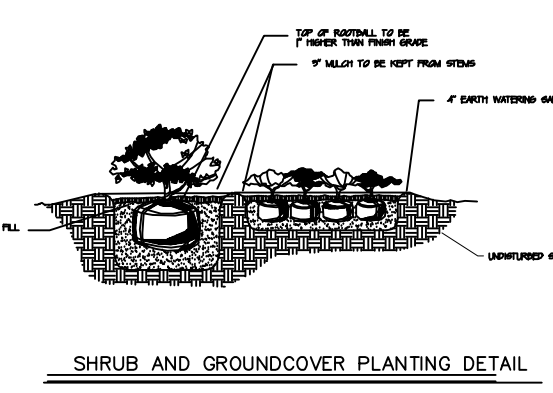
(b) PRIOR TO COMMENCING WORK AND THROUGHOUT THE DURATION OF THE AUTHORIZED ACTIVITY, THE OWNER, DEVELOPER, CONTRACTOR OR AGENT SHALL CLEARLY MARK WITH RED FLAGGING ALL TREES PROPOSED TO BE REMOVED AND SHALL ERECT BARRICADES AROUND ALL TREES TO BE PROTECTED. THE BARRICADES MUST REMAIN IN PLACE AND BE IN GOOD CONDITION FOR THE DURATION OF THE AUTHORIZED ACTIVITY. PROTECTIVE BARRICADES FOR PROTECTED TREES SHALL BE INSTALLED NO CLOSER THAN THE OUTER EDGE OF THE DESIGNATED TPZ OF THE TREE. BARRICADES SHALL BE PLACED NO CLOSER THAN THREE FEET FROM THE TRUNK OF PALMS. BARRICADES SHALL BE CONSTRUCTED IN A POST AND RAIL CONFIGURATION OR WITH ORANGE BARRIER FENCING AND BE NO LESS THAN FOUR FEET IN HEIGHT. THE UPRIGHT POSTS SHALL BE A MINIMUM OF A TWO BY TWO-INCH WOODEN STAKE. POSTS SHALL BE IMPLANTED DEEP ENOUGH INTO THE GROUND TO BE STABLE AND EXTEND A MINIMUM HEIGHT OF FOUR FEET ABOVE THE GROUND. A MINIMUM OF A ONE FOUR-INCH BY ONE INCH BY EIGHT FEET IN LENGTH WOODEN BOARD SHALL BE USED TO CONNECT THE UPRIGHT POSTS. THE MAXIMUM DISTANCE ALLOWED BETWEEN UPRIGHT POSTS IS EIGHT FEET. SILT BARRIERS, HAY OR STRAW BALES, OR SIMILARLY EFFECTIVE EROSION CONTROL BARRIERS MAY BE SUBSTITUTED AND REQUIRED IN ANY AREA WHERE EROSION OR SILTATION MAY CAUSE DAMAGE TO TPZ UPON APPROVAL BY THE CITY ARBORIST. BARRICADES THAT RESULT IN GREATER PROTECTION MAY BE SUBSTITUTED WITH THE APPROVAL OF THE CITY ARBORIST. IN ALL CASES, THE BARRIERS MUST REMAIN IN PLACE UNTIL THE FINAL FINISH GRADE IS ESTABLISHED AT THE END OF THE PROJECT OR PROJECT PHASE. DAMAGE TO PROTECTION BARRIERS AND ENCROACHMENTS INTO THE TPZ WILL BE SUBJECT TO SUBSECTION 118-51(C), AND ARTICLE VI SIGN, SHALL BE POSTED AT 50-FOOT INTERVALS FOR SINGLE TREES OR TREE CLUSTERS OF 20 TREES OR LESS AND 100-FOOT INTERVALS FOR AREAS OF MORE THAN 20 TREES THAT CLEARLY STATE POTENTIAL FINES AND "TREE PROTECTION AREA, KEEP OUT".



TREE PROTECTION (TYPICAL)



Prior to commencing work and throughout the duration of the authorized activity, the owner, developer, contractor or agent shall clearly mark with red flagging all trees proposed to be removed and shall erect barricades around all trees to be protected. The barricades must remain in place and be in good condition for the duration of the authorized activity. Protective barricades for protected trees shall be installed no closer than the outer edge of the designated TPZ of the tree. Barricades shall be placed no closer than three feet from the trunk of palms. Barricades shall be constructed in a post and rail configuration or with orange barrier fencing and be no less than four feet in height. The upright posts shall be a minimum of a two by two-inch wooden stake. Posts shall be implanted deep enough into the ground to be stable and extend a minimum height of four feet above the ground. A minimum of a one four-inch by one inch by eight feet in length wooden board shall be used to connect the upright posts. The maximum distance allowed between upright posts is eight feet. Silt barriers, hay or straw bales, or similarly effective erosion control barriers may be substituted and required in any area where erosion or siltation may cause damage to TPZ upon approval by the city arborist. Barricades that result in greater protection may be substituted with the approval of the city arborist. In all cases, the barriers must remain in place until the final finish grade is established at the end of the project or project phase. Damage to protection barriers and encroachments into the TPZ will be subject to subsection 118-51(c), and article VII Sign, shall be posted at 50-foot intervals for single trees or tree clusters of 20 trees or less and 100-foot intervals for areas of more than 20 trees that clearly state potential fines and "Tree Protection Area, Keep Out".



REVISIONS
12.12.2015
01.15.2016

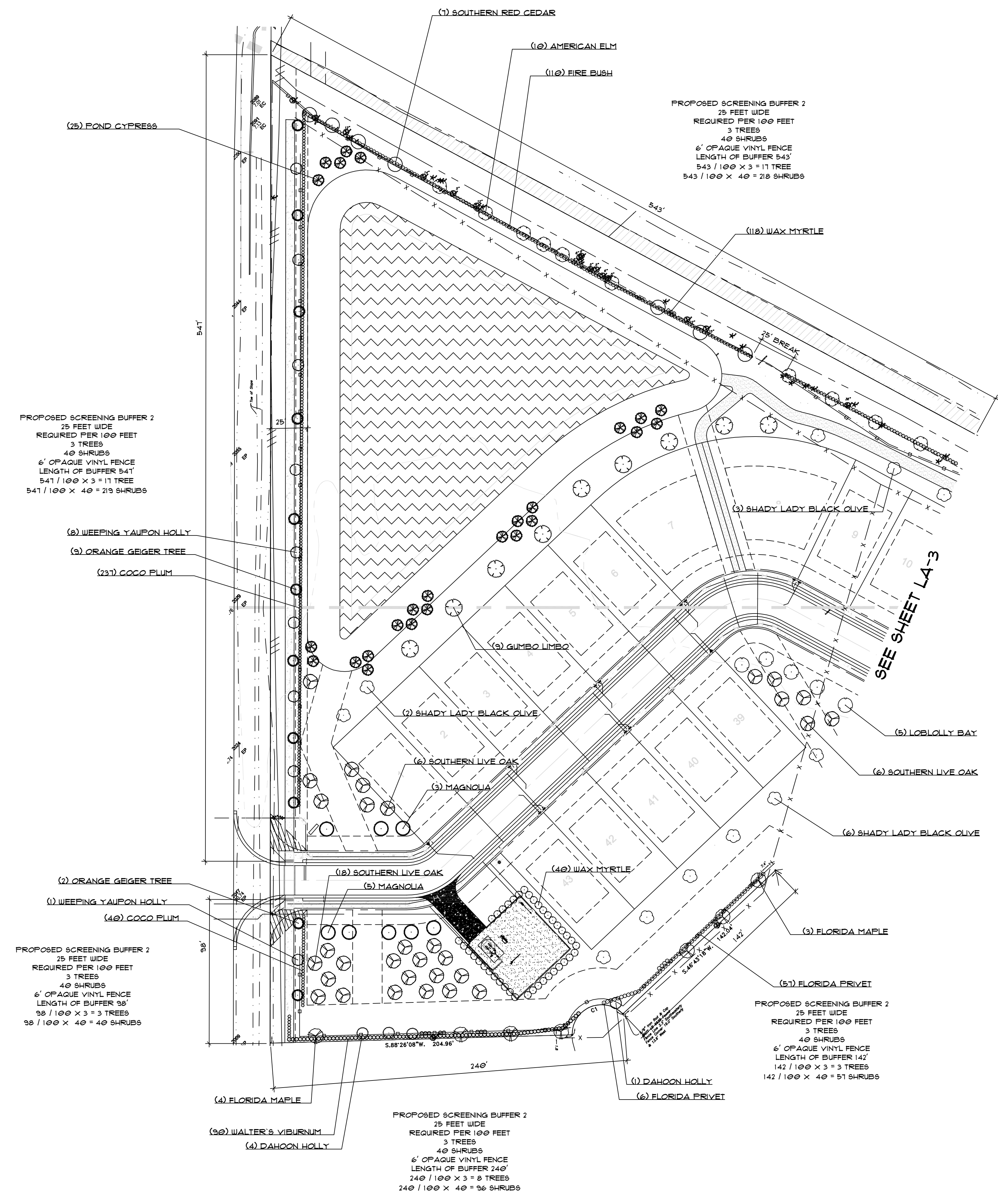
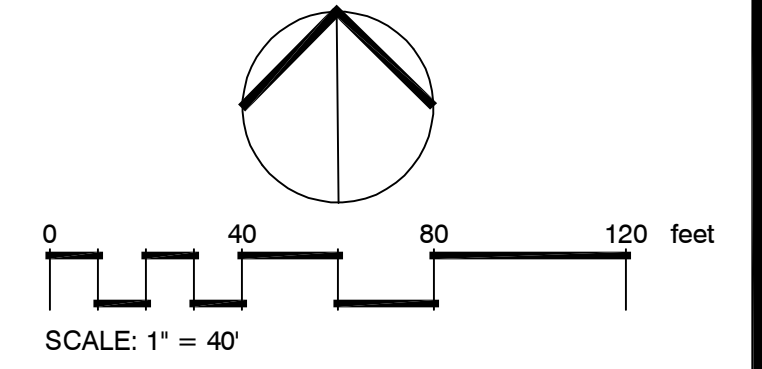
TERRESCAPE INC.
 TYONE R. HALL ABLA
 LANDSCAPE ARCHITECT
 FL REG NO LA0000133 BARASOTA, FLORIDA 34208
 PH: 941-239-1483
 2286 GROVE STREET BARASOTA, FLORIDA 34208

CHALETTS AT VENICE
 CITY OF VENICE, FLORIDA

SCALE
1" = 40'
DATE
10.13.2025
JOB NUMBER
SHEET

Always call 811 two full business days before you dig to have underground utilities located and marked.
Sunshine811.com

LA-1
 OF 5



SYMBOL	QTY	BOTANICAL NAME	COMMON NAME	SIZE	
TREES					
	14	GORDONIA LASIANTHUS	LOBLOLLY BAY	4" CAL 10' HGT 4' SPR	NATIVE
	9	ILEX VOMITORIA 'PENDULA'	WEeping YAUPON HOLLY	2.5" CAL	NATIVE
	20	ACER RUBRUM	FLORIDA MAPLE	4" CAL 10' HGT 4' SPR	NATIVE
	21	BUCIDA BUCERAS 'SHADY LADY'	SHADY LADY BLACK OLIVE	4" CAL 10' HGT 4' SPR	FLORIDA FRIENDLY
	24	BURSERA SIMARUBA	GUMBO LIMBO	4" CAL 10' HGT 4' SPR	NATIVE
	11	CORDIA SEBESTENA	ORANGE GEIGER TREE	8" X 3' 2.5" CAL	NATIVE
	13	ILEX CASSINE	DAHoon HOLLY	2.5" CAL	NATIVE
	16	JUNIPERUS VIRGINIANA 'SILICOLA'	Southern RED CEDAR	4" CAL 10' HGT 4' SPR	NATIVE
	8	MAGNOLIA GRANDIFLORA	MAGNOLIA	4" CAL 12' X 5'	NATIVE
	31	QUERCUS VIRGINIANA	Southern LIVE OAK	4" CAL 10' HGT 4' SPR	NATIVE
	10	SWIETENIA MAHAGONI	WEST INDIAN MAHOGANY	4" CAL 10' HGT 4' SPR	NATIVE
	25	TAXODIUM ASCENDENS	FOND CYPRESS	4" CAL 10' HGT 4' SPR	NATIVE
	21	ULMUS AMERICANA	AMERICAN ELM	4" CAL 10' HGT 4' SPR	NATIVE
SHRUBS					
	266	HAMELIA PATENS	FIRE BUSH	24" HGT	NATIVE
	254	MYRICA CERIFERA	WAX MYRTLE	24" HGT	NATIVE
	211	CHRYSOBALANUS ICACO	COCO PLUM	24" HGT	NATIVE
	205	FORESTIERA SEGREGATA	FLORIDA PRIVET	24" HGT	NATIVE
	124	ILlicium FLORIDANUM	ANISE	24" HGT	NATIVE
	40	MYRICA CERIFERA	WAX MYRTLE	4' HT.	NATIVE
	236	VIBURNUM OBOVATUM	WALTER'S VIBURNUM	24" HGT	NATIVE

PLANTING PLAN

REVISIONS
01.15.2026

TERRESCAPE INC.
YVONNE R. HALL ABLA
LANDSCAPE ARCHITECT

FL REG NO LAR000153 SARASOTA, FLORIDA 34231
PH 941-228-1483
2226 GROVE STREET

CHALETs AT VENICE
CITY OF VENICE, FLORIDA

SCALE
1" = 40'

DATE
10.13.2025

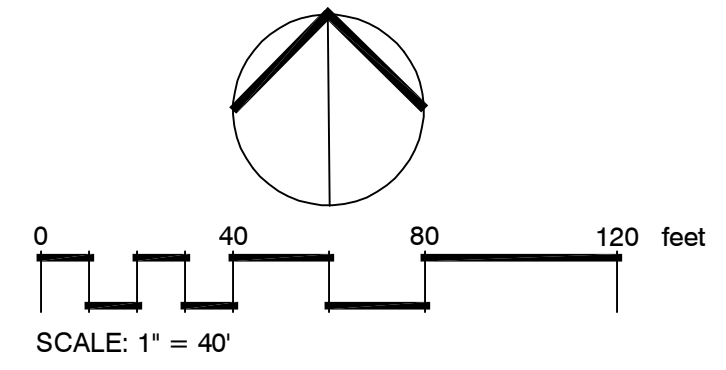
JOB NUMBER

SHEET

LA-2

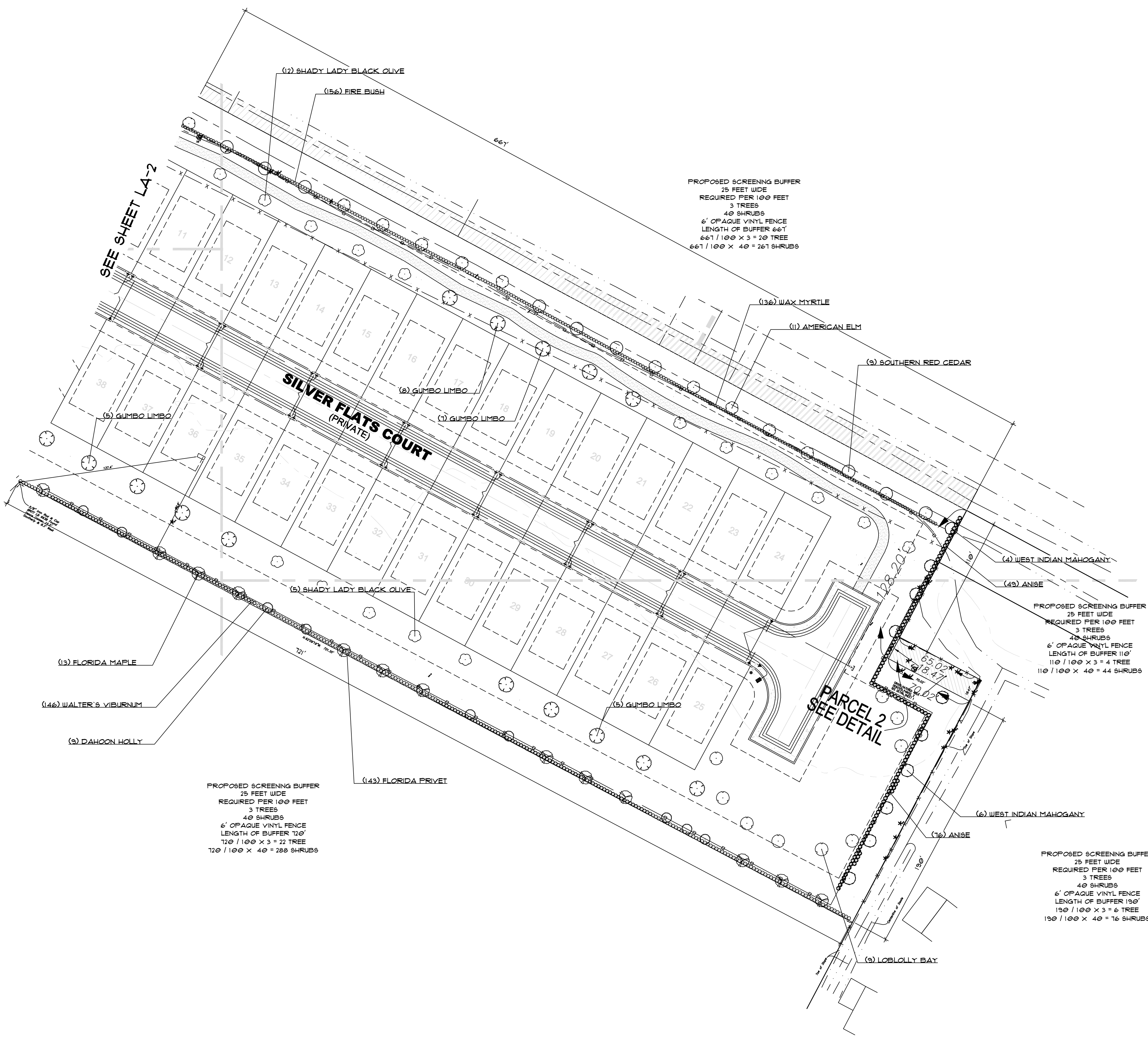
OF 5

Always call 811 two full business days before you dig to have underground utilities located and marked.



GENERAL NOTES

1. ALL PLANT MATERIALS SHALL BE FLORIDA NO. 1 OR BETTER PER "FLORIDA GRADES & STANDARDS FOR NURSERY PLANTS" PER FLORIDA DEPARTMENT OF CONSUMER SERVICES. PLANTS SHALL BE FREE OF DISEASE, INSECTS, DEFECTS, AND/OR INJURIES.
 2. ALL PLANTING AREAS SHALL HAVE A 2" TO 3" LAYER OF SHREDDED ORGANIC MULCH. MULCH SHALL NOT BE IN CONTACT WITH THE BARK OF TREES OR SHRUBS.
 3. WORK SHALL PROGRESS IN A WORKMANLIKE MANNER ACCORDING TO STANDARDS OF THE INDUSTRY.
 4. AN AUTOMATIC IRRIGATION SYSTEM SHALL BE PROVIDED FOR THE PURPOSE OF ESTABLISHING AND MAINTAINING ALL PLANT MATERIALS. AN IRRIGATION WELL SHALL BE THE WATER SOURCE.
 5. ALL DISTURBED AREAS WITHIN LANDSCAPE BUFFERS AND IN LANDSCAPE ISLANDS IN THE PARKING LOT SHALL BE SODDED WITH ST. AUGUSTINE "FLORITAM" SOD. SOD SHALL BE OF GOOD QUALITY AND INSTALLED WITH PIECES FIRMLY TOGETHER SO AS TO FORM A CONTINUOUS SURFACE. ACTUAL QUANTITY OF SOD REQUIRED TO COVER DISTURBED AREAS MAY VARY AND SHALL BE DETERMINED AT THE COMPLETION OF CONSTRUCTION.
 6. ALL PLANTED TREES SHALL BE PLANTED BEYOND THE TOP OF SLOPE OF DRAINAGE SWALES OR DITCHES. TREES SHALL NOT BE PLANTED ON THE SIDE SLOPES OR THE BOTTOM OF SWALES, DITCHES OR RETENTION AREAS WITH THE EXCEPTION OF SABAL PALMS.
 7. ALL NOXIOUS TREES AND PLANTS SHALL BE REMOVED FROM SITE AT THE TIME OF DEVELOPMENT. THIS INCLUDES BUT SHALL NOT BE LIMITED TO BRAZILIAN PEPPER (SCHINUS MOLLE), AUSTRALIAN PINE (CASUARINA SPP.), MELALEUCA (MELALEUCA SPP.) AND CARROTWOOD (CUPANIOPSIS ANACARDIODES).
 8. LANDSCAPING SHALL BE MAINTAINED IN PERPETUITY IN A MANNER TO MEET CITY CODES AND IN A NEAT (FREE OF LITTER AND DEBRIS) AND HEALTHY CONDITION.
 9. ALL TREES AND SHRUBS SHALL BE INSTALLED AND ESTABLISHED FOLLOWING THE GUIDELINES IN "TREE AND SHRUB PLANTING AND ESTABLISHMENT" AVAILABLE THROUGH SARASOTA COUNTY EXTENSION SERVICE.
 10. A TREE REMOVAL AND PROTECTION PERMIT SHALL BE OBTAINED PRIOR TO ANY CONSTRUCTION, CLEARING OR TREE REMOVAL FOR THE PROPOSED PROTECTION IN ACCORDANCE WITH CITY OF VENICE CODE.
 11. ALL WORK SHALL BE IN COMPLIANCE WITH THE TREE PROTECTION PROGRAM.
 12. SPECIFICATIONS ARE MINIMUM REQUIRED BY CODE. ALL ALTERATIONS TO SPECIFICATIONS AND SPECIES PRIOR REQUIRE PERMISSION FROM THE LANDSCAPE ARCHITECT.
 13. THE APPROVED LANDSCAPE PLANS AND SPECIFICATIONS MUST BE FOLLOWED CLOSELY. PLANT MATERIAL QUALITY AND SIZE, MULCH AND SOIL SPECIFICATIONS, AND THE SPECIFICATIONS OF THE PLANS OVERALL, WILL BE STRICTLY ENFORCED BY THE CITY. IF THE NEED FOR PLANT MATERIAL SUBSTITUTIONS OR OTHER SUBSTANTIAL CHANGES TO THE APPROVED PLANS ARISE DURING THE CONSTRUCTION PHASE, THESE CHANGES MUST BE REVIEWED BY THE CITY PRIOR TO INSTALLATION. COMMUNICATING CHANGES TO THE CITY DURING THE CONSTRUCTION PHASE COULD AVOID DELAYS WITH FINAL PROJECT APPROVALS. MINOR ALTERATIONS TO ACCOMMODATE CONSTRUCTION ARE UNDERSTOOD BUT MUST BE REVIEWED BEFORE ANY SUCH ALTERATIONS ARE MADE.
- CONTRACTOR NOTES:** PLEASE ENSURE THAT CONSTRUCTION AND LANDSCAPE CONTRACTORS ARE INFORMED THAT THE APPROVED LANDSCAPE PLANS AND SPECIFICATIONS MUST BE FOLLOWED CLOSELY. THE CITY WILL STRICTLY ENFORCE COMPLIANCE WITH ALL ASPECTS OF THE PLANS, INCLUDING PLANT MATERIAL QUALITY AND SIZE, MULCH AND SOIL SPECIFICATIONS, AND THE SPECIFICATIONS OVERALL. IF PLANT MATERIAL SUBSTITUTIONS OR OTHER SUBSTANTIAL CHANGES TO THE APPROVED PLANS ARISE DURING THE CONSTRUCTION PHASE, THESE CHANGES MUST BE REVIEWED BY THE CITY PRIOR TO INSTALLATION. PROACTIVELY COMMUNICATING CHANGES TO THE CITY DURING THE CONSTRUCTION PHASE COULD AVOID DELAYS WITH FINAL PROJECT APPROVALS. MINOR ALTERATIONS TO ACCOMMODATE SITE CONDITIONS OR MATERIAL AVAILABILITY ARE UNDERSTOOD BUT MUST BE REVIEWED BEFORE ANY SUCH ALTERATIONS ARE MADE.
- TREE PERMIT:** A SEPARATE TREE PERMIT APPLICATION MUST BE SUBMITTED TO THE BUILDING DEPARTMENT FOR PROCESSING PRIOR TO ANY CONSTRUCTION ACTIVITY ON THE SITE. THE TREE PERMIT FEE WILL BE CALCULATED BASED ON THE ACREAGE OF THE PROJECT AREA. SEC. 89-3.31.
- TREE PRUNING:** TREES PRESERVED OR PLANTED UNDER A TREE PERMIT OR APPROVED LANDSCAPE PLAN ARE PROTECTED AND MUST BE ALLOWED TO DEVELOP A FULL, NATURAL CROWN. PRUNING THAT INVOLVES SHEARING, TOPPING, OR SHAPING TREES INTO UNNATURAL FORMS, OR ANY PRACTICE INCONSISTENT WITH ANSI A300 STANDARDS FOR TREE CARE, IS PROHIBITED AND CONSIDERED A VIOLATION OF THE TREE CODE. SEC. 89-3.5.2(G).



PLANTING PLAN

REVISIONS
0115.2026

TERRESCAPE INC.
TYONNE R. HALL AIA
LANDSCAPE ARCHITECT

FL REG NO. LA060133
2286 GROVE STREET, SARASOTA, FLORIDA 34235
PH: 941-228-1483

CHALET'S AT VENICE
CITY OF VENICE, FLORIDA

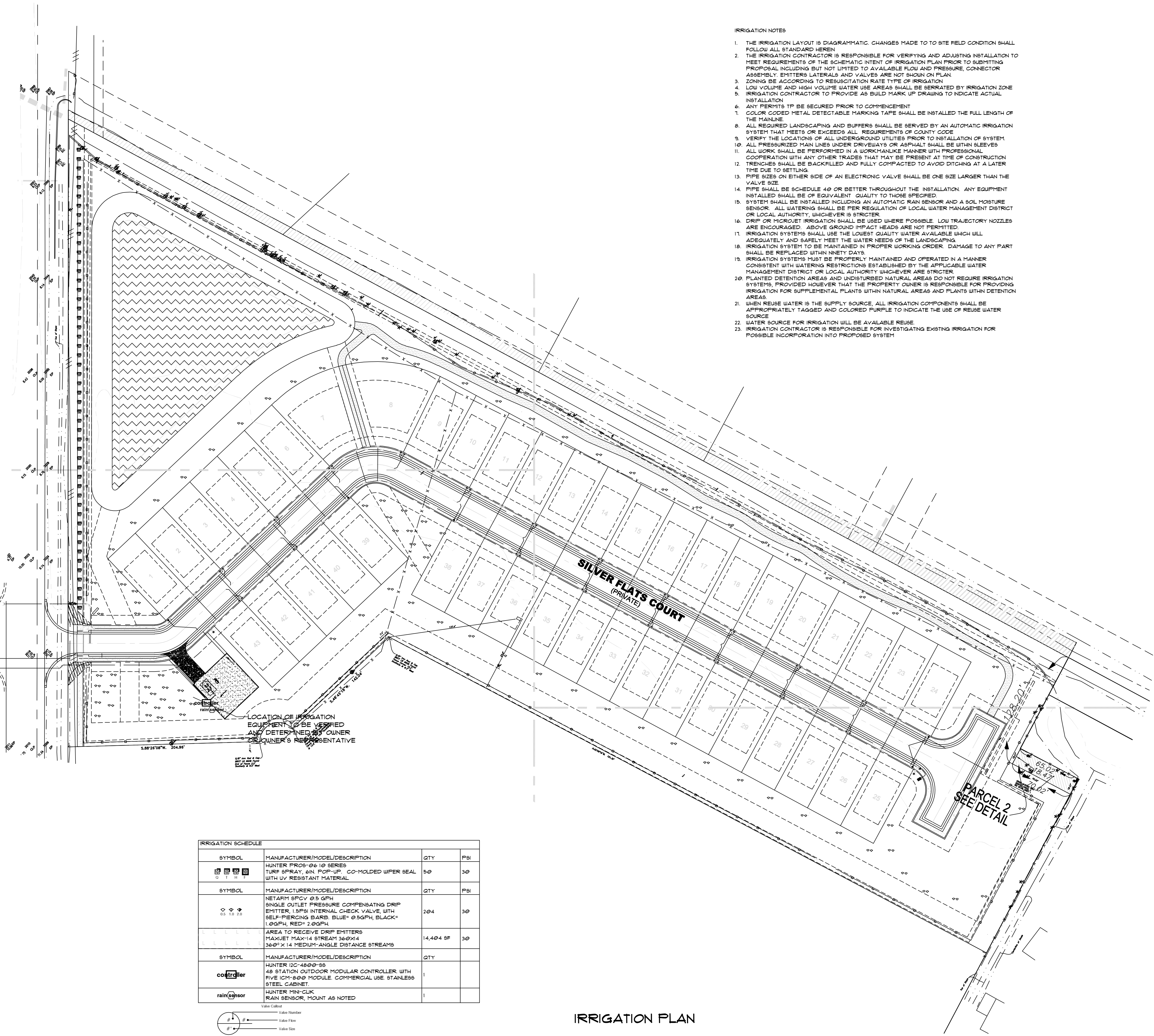
SCALE	1" = 40'
DATE	10.13.2025
JOB NUMBER	
SHEET	

LA-3

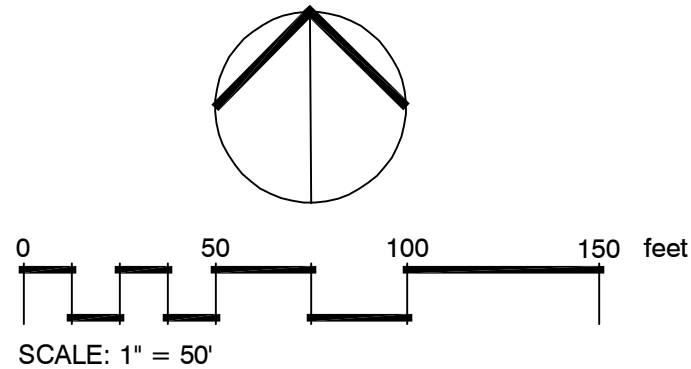
OF 5

Always call 811 two full business days before you dig to have underground utilities located and marked.

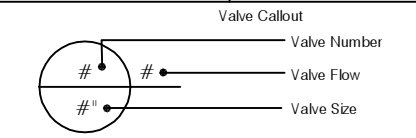
Sunshine811.com



- IRRIGATION NOTES
1. THE IRRIGATION LAYOUT IS DIAGRAMMATIC. CHANGES MADE TO SITE FIELD CONDITION SHALL FOLLOW ALL STANDARD HEREIN.
 2. THE IRRIGATION CONTRACTOR IS RESPONSIBLE FOR VERIFYING AND ADJUSTING INSTALLATION TO MEET REQUIREMENTS OF THE SCHEMATIC INTENT OF IRRIGATION PLAN PRIOR TO SUBMITTING PROPOSAL INCLUDING BUT NOT LIMITED TO AVAILABLE FLOW AND PRESSURE, CONNECTOR ASSEMBLY, EMITTERS, LATERALS AND VALVES ARE NOT SHOWN ON PLAN.
 3. ZONING BE ACCORDING TO RESURCINATION RATE TYPE OF IRRIGATION.
 4. LOW VOLUME AND HIGH VOLUME WATER USE AREAS SHALL BE SERRATED BY IRRIGATION ZONE.
 5. IRRIGATION CONTRACTOR TO PROVIDE AS BUILT MARK UP DRAWING TO INDICATE ACTUAL INSTALLATION.
 6. ANY PERMITS TP BE SECURED PRIOR TO COMMENCEMENT.
 7. COLOR CODED METAL DETECTABLE MARKING TAPE SHALL BE INSTALLED THE FULL LENGTH OF THE MAINLINE.
 8. ALL REQUIRED LANDSCAPING AND BUFFERS SHALL BE SERVED BY AN AUTOMATIC IRRIGATION SYSTEM THAT MEETS OR EXCEEDS ALL REQUIREMENTS OF COUNTY CODE.
 9. VERIFY THE LOCATIONS OF ALL UNDERGROUND UTILITIES PRIOR TO INSTALLATION OF SYSTEM.
 10. ALL PRESSURIZED MAIN LINES UNDER DRIVEWAYS OR ASPHALT SHALL BE WITHIN SLEEVES.
 11. ALL WORK SHALL BE PERFORMED IN A WORKMANLIKE MANNER WITH PROFESSIONAL COOPERATION WITH ANY OTHER TRADES THAT MAY BE PRESENT AT TIME OF CONSTRUCTION.
 12. TRENCHES SHALL BE BACKFILLED AND FULLY COMPACTED TO AVOID DITCHING AT A LATER TIME DUE TO SETTLING.
 13. PIPE SIZES ON EITHER SIDE OF AN ELECTRONIC VALVE SHALL BE ONE SIZE LARGER THAN THE VALVE SIZE.
 14. PIPE SHALL BE SCHEDULE 40 OR BETTER THROUGHOUT THE INSTALLATION. ANY EQUIPMENT INSTALLED SHALL BE OF EQUIVALENT QUALITY TO THOSE SPECIFIED.
 15. SYSTEM SHALL BE INSTALLED INCLUDING AN AUTOMATIC RAIN SENSOR AND A SOIL MOISTURE SENSOR. ALL WATERING SHALL BE PER REGULATION OF LOCAL WATER MANAGEMENT DISTRICT OR LOCAL AUTHORITY, WHICHEVER IS STRICTER.
 16. DRIP OR MICROJET IRRIGATION SHALL BE USED WHERE POSSIBLE. LOW TRAJECTORY NOZZLES ARE ENCOURAGED. ABOVE GROUND IMPACT HEADS ARE NOT PERMITTED.
 17. IRRIGATION SYSTEMS SHALL USE THE LOWEST QUALITY WATER AVAILABLE WHICH WILL ADEQUATELY AND SAFELY MEET THE WATER NEEDS OF THE LANDSCAPING.
 18. IRRIGATION SYSTEM TO BE MAINTAINED IN PROPER WORKING ORDER. DAMAGE TO ANY PART SHALL BE REPLACED WITHIN NINETY DAYS.
 19. IRRIGATION SYSTEMS MUST BE PROPERLY MAINTAINED AND OPERATED IN A MANNER CONSISTENT WITH WATERING RESTRICTIONS ESTABLISHED BY THE APPLICABLE WATER MANAGEMENT DISTRICT OR LOCAL AUTHORITY WHICHEVER ARE STRICTER.
 20. PLANTED DETENTION AREAS AND UNDISTURBED NATURAL AREAS DO NOT REQUIRE IRRIGATION SYSTEMS, PROVIDED HOWEVER THAT THE PROPERTY OWNER IS RESPONSIBLE FOR PROVIDING IRRIGATION FOR SUPPLEMENTAL PLANTS WITHIN NATURAL AREAS AND PLANTS WITHIN DETENTION AREAS.
 21. WHEN REUSE WATER IS THE SUPPLY SOURCE, ALL IRRIGATION COMPONENTS SHALL BE APPROPRIATELY TAGGED AND COLORED PURPLE TO INDICATE THE USE OF REUSE WATER SOURCE.
 22. WATER SOURCE FOR IRRIGATION WILL BE AVAILABLE REUSE.
 23. IRRIGATION CONTRACTOR IS RESPONSIBLE FOR INVESTIGATING EXISTING IRRIGATION FOR POSSIBLE INCORPORATION INTO PROPOSED SYSTEM.



IRRIGATION SCHEDULE			
SYMBOL	MANUFACTURER/MODEL/DESCRIPTION	QTY	PSI
	HUNTER PRO-C 1/2" SERIES TURF-SPRAY, 6IN. POP-UP, CO-MOLDED WIPER SEAL WITH UV RESISTANT MATERIAL	50	30
	NETARM 1/2" PCV 1/2" GPH SINGLE OUTLET PRESSURE COMPENSATING DRIP EMITTER, 1.5PSI INTERNAL CHECK VALVE, WITH SELF-PIERCING BARS, BLUE* 1.0GPH, BLACK* 1.0GPH, RED* 2.0GPH	204	30
	AREA TO RECEIVE DRIP EMITTERS MAX/JET MAX-14 STREAM 36"X4 36"X 14 MEDIUM-ANGLE DISTANCE STREAMS	14,404 SF	30
	HUNTER 1/2" 4800-55 48 STATION OUTDOOR MODULAR CONTROLLER WITH FIVE 1/2" 90° MODULE, COMMERCIAL USE, STAINLESS STEEL CABINET	1	
	HUNTER MINI-CLK RAIN SENSOR, MOUNT AS NOTED	1	



IRRIGATION PLAN

REVISIONS
01/15/2026

TERRESCAPE INC.
YVONNE R. HALL ASLA
LANDSCAPE ARCHITECT

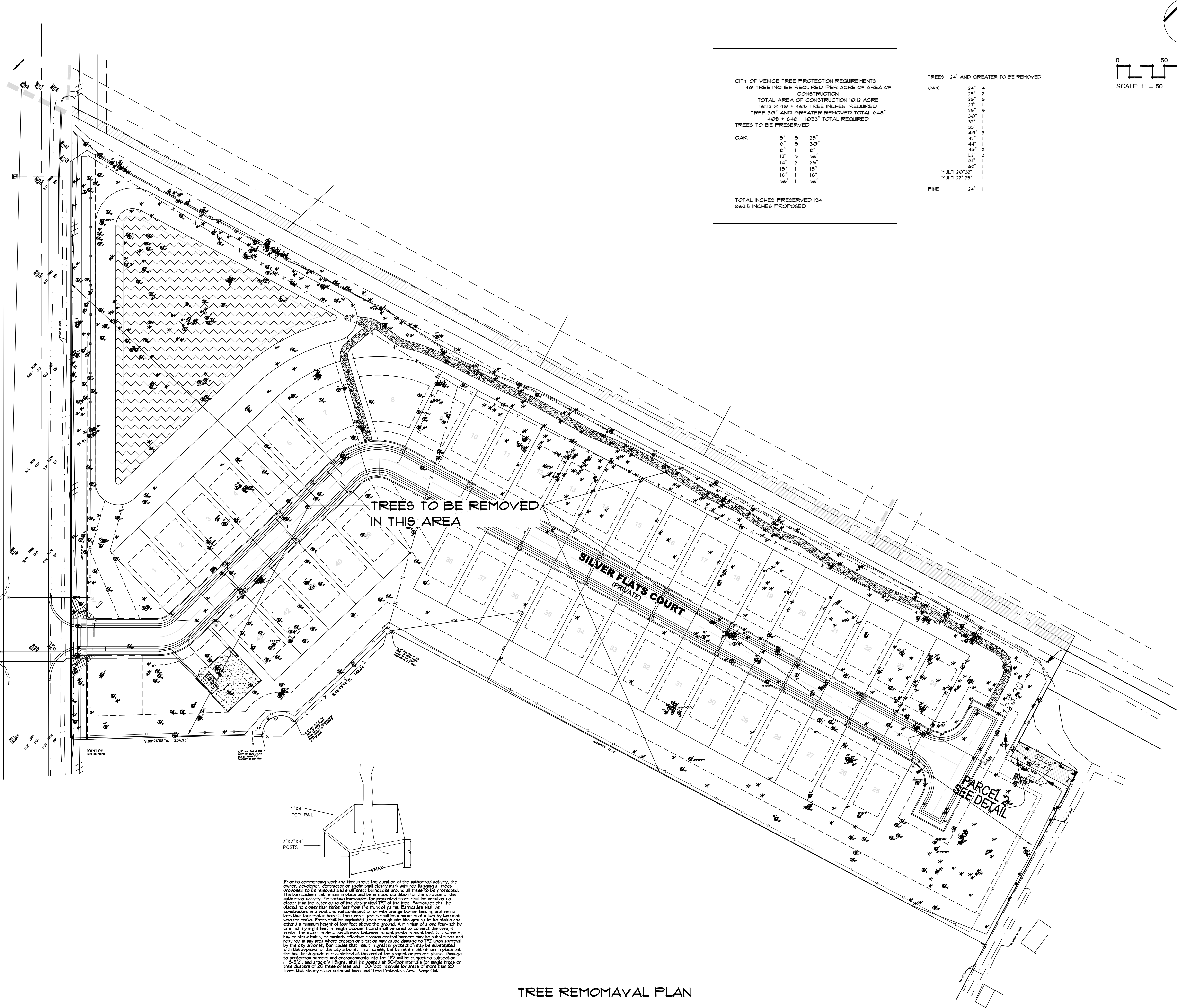
FL REG NO. LA00001573
2206 GROVE STREET, SARASOTA, FLORIDA 34235
PH. 941-228-1485

CHALETS AT VENICE
CITY OF VENICE, FLORIDA

SCALE
1" = 40'
DATE
10.13.2025
JOB NUMBER
SHEET

LA-4
OF 5

Always call 811 two full business days before you dig to have underground utilities located and marked.
Sunshine811.com



CITY OF VENICE TREE PROTECTION REQUIREMENTS
 40 TREE INCHES REQUIRED PER ACRE OF AREA OF CONSTRUCTION
 TOTAL AREA OF CONSTRUCTION @ 12 ACRE
 10.12 X 40 = 405 TREE INCHES REQUIRED
 TREE 30" AND GREATER REMOVED TOTAL 648"
 405 + 648 = 1053" TOTAL REQUIRED

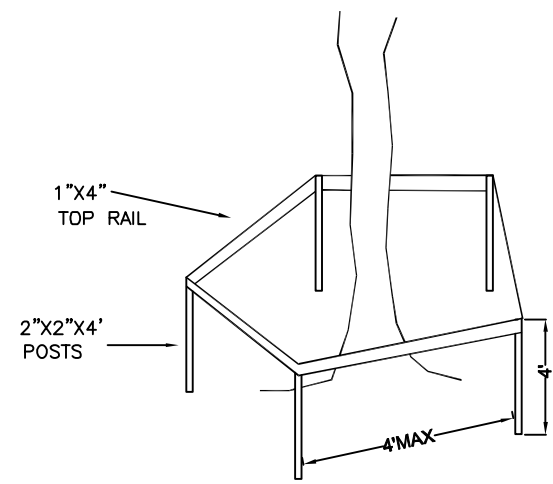
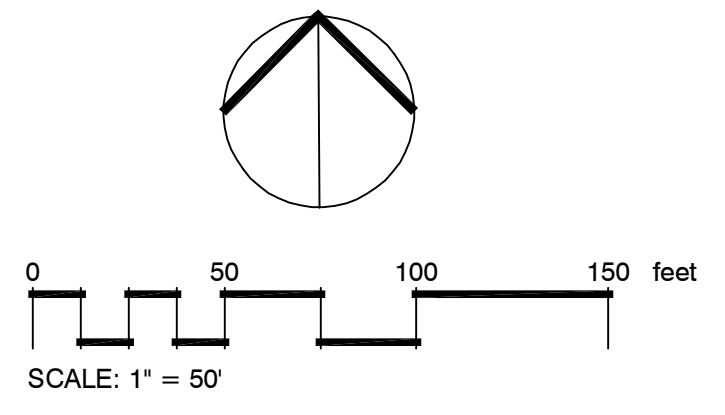
TREES TO BE PRESERVED

OAK	5"	5	25"
	6"	5	30"
	8"	1	8"
	12"	3	36"
	14"	2	28"
	15"	1	15"
	16"	1	16"
	36"	1	36"

TOTAL INCHES PRESERVED 194
 8623 INCHES PROPOSED

TREES 24" AND GREATER TO BE REMOVED

OAK	24"	4
	25"	2
	26"	6
	27"	1
	28"	5
	30"	1
	32"	1
	33"	1
	40"	3
	42"	1
	44"	1
	46"	2
	52"	2
	61"	1
	62"	1
MULTI 10"	32"	1
MULTI 22"	25"	1
PINE	24"	1



Prior to commencing work and throughout the duration of the authorized activity, the owner, developer, contractor or agent shall clearly mark with red flagging all trees proposed to be removed and shall erect barricades around all trees to be protected. The barricades must remain in place and be in good condition for the duration of the authorized activity. Protective barricades for protected trees shall be installed no closer than the outer edge of the designated TRZ of the tree. Barricades shall be placed no closer than three feet from the trunk of palms. Barricades shall be constructed in a post and rail configuration or with orange barrier fencing and be no less than four feet in height. The upright posts shall be a minimum of a two by two wooden stake. Posts shall be installed deep enough into the ground to be stable and extend a minimum height of four feet above the ground. A minimum of a one four-inch by one inch by eight feet in length wooden board shall be used to connect the upright posts. The maximum distance allowed between upright posts is eight feet. Six barriers, hay or straw bales, or similarly effective erosion control barriers may be substituted and used in any area where erosion or stabilization cause damage to TRZ upon approval by the city arborist. Barricades that result in greater protection may be substituted with the approval of the city arborist. In all cases, the barriers must remain in place until the final finish grade is established at the end of the project or project phase. Damage to protection barriers and encroachments to the TRZ will be subject to subsection 11B-5(c), and article VII 3(d), shall be posted at 50-foot intervals for single trees or tree clusters of 20 trees or less and 100-foot intervals for areas of more than 20 trees that clearly state potential fines and "Tree Protection Area, Keep Out".

TREE REMOVAL PLAN

REVISIONS

TERRESCAPE INC.
 TYONNE R. HALL ASLA
 LANDSCAPE ARCHITECT
 FL REG NO LA990153 PH 941-228-1483
 2286 GROVE STREET SARASOTA, FLORIDA 34239

CHALETs AT VENICE
 CITY OF VENICE, FLORIDA

SCALE
 1" = 40'
 DATE
 10.13.2025
 JOB NUMBER
 SHEET

Always call 811 two full business days before you dig to have underground utilities located and marked.
Sunshine811.com

LA-5
 OF 5