



MEMO

City of Venice

Engineering Department

To: Edward Lavallee, City Manager

From: Kathleen J. Weeden, PE, City Engineer 

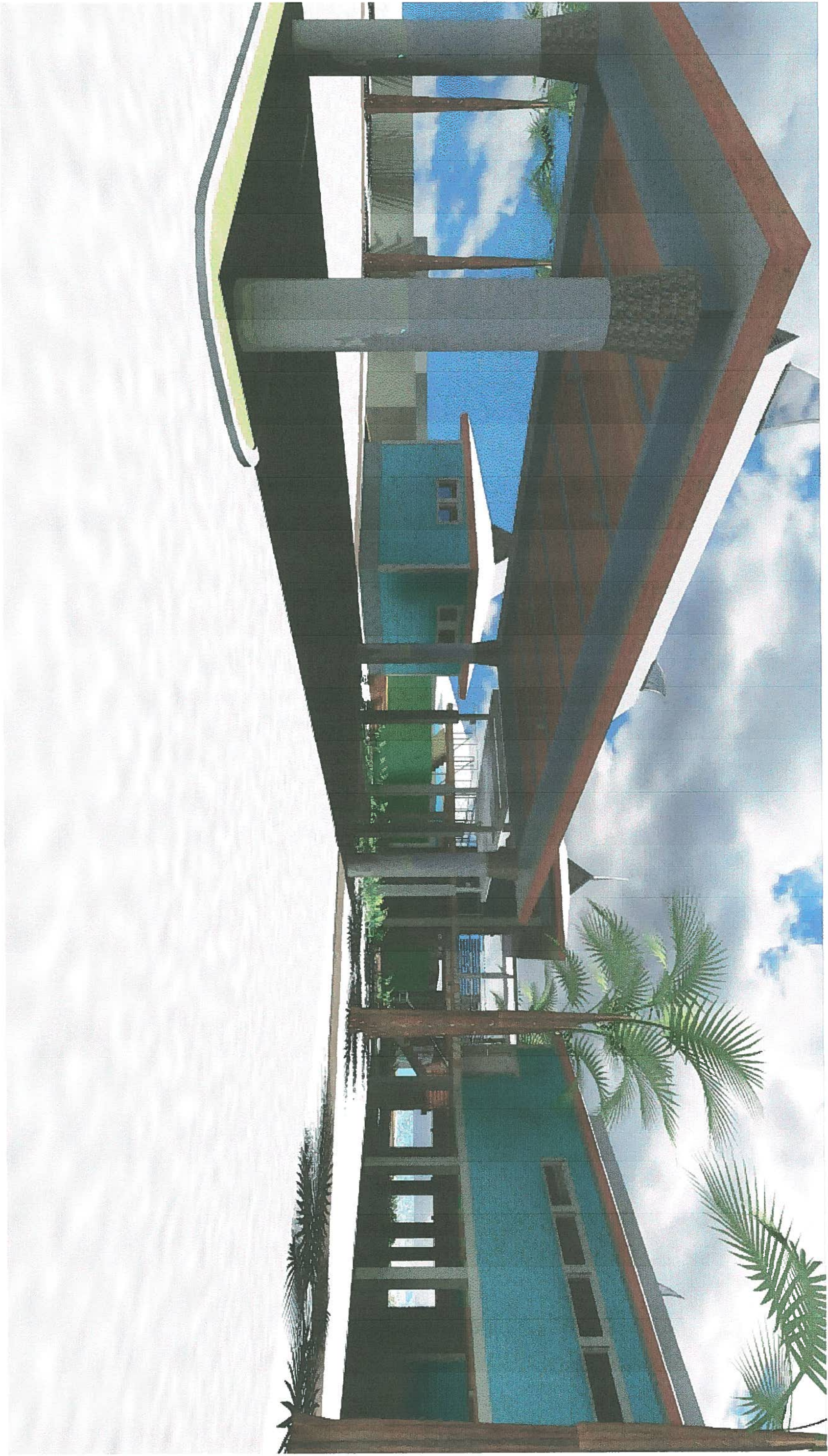
Date: 06/27/2013

Subject: Sharky's Plan Revision

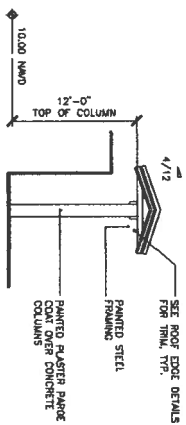
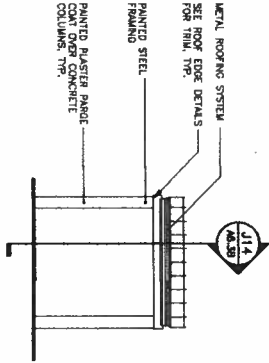
Background: In accordance with the provisions on the Amended and Restated Lease Agreement with Venice Pier Group, Inc. (VPG), City Council approval of Construction Plans is required. City Council previously approved the 100% Construction Plans and the restaurant construction is underway. VPG is requesting a minor addition to the approved plans to place a "Shark Fin" on top of the restaurant as illustrated in the attached document. Based on staff review, this item would be considered decorative art and as long as building code requirements are met, there would not be an objection at the staff level. The addition of the "Shark Fin" would not exceed the maximum allowed height approved by the Federal Aviation Administration (FAA) in the Air Study Determination and would not require modification of the approved Florida Department of Environmental Permits. Staff recommends approval of the requested addition.

Requested Action: Motion to approve the addition of a "Shark Fin" on top of the restaurant to the 100% Construction Plans.

Cc: Dave Persson, City Attorney
Vince LaPorta, Building Official





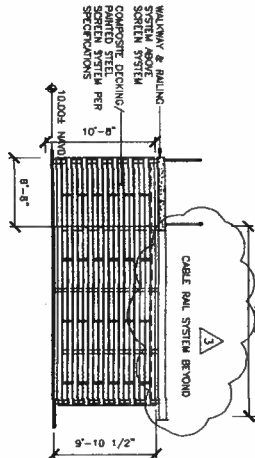
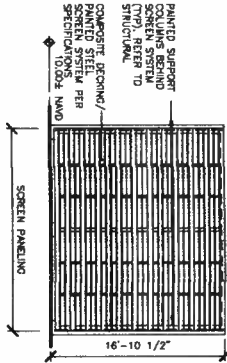


ENTRY NORTH ELEVATION (SOUTH OPP.)

ENTRY EAST ELEVATION (WEST OPP.)

ELEVATOR BUILDING WEST ELEVATION

ELEVATOR BUILDING SOUTH ELEVATION

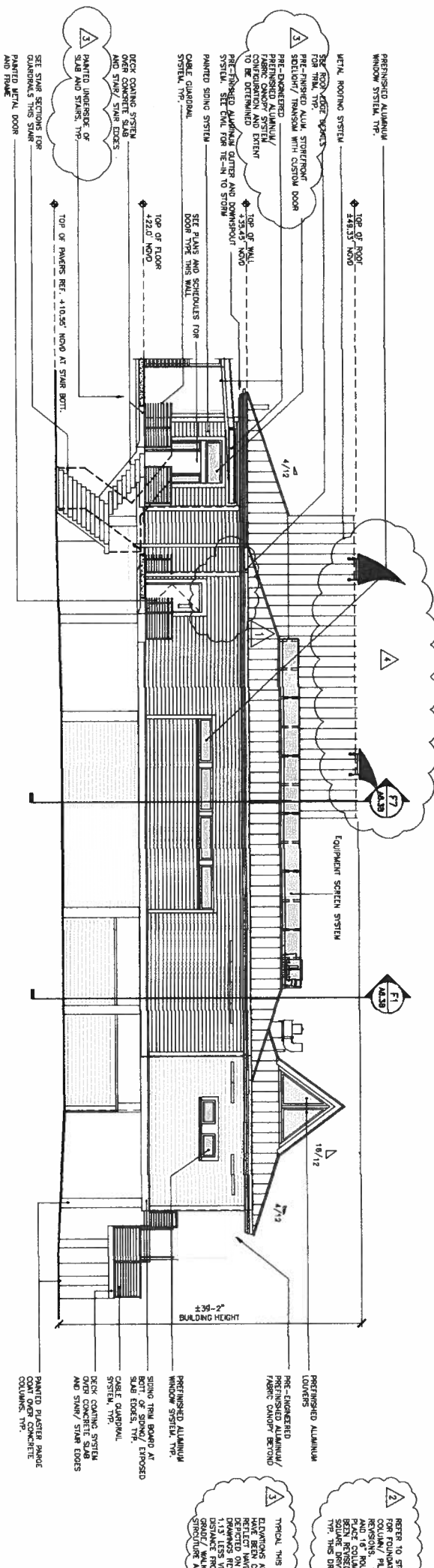
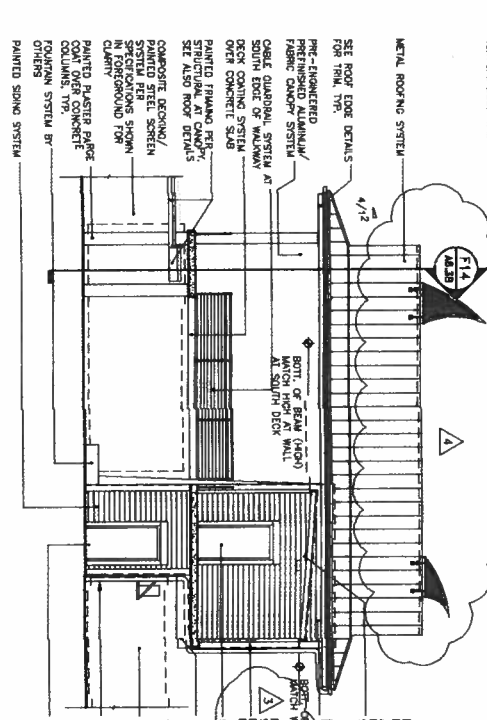
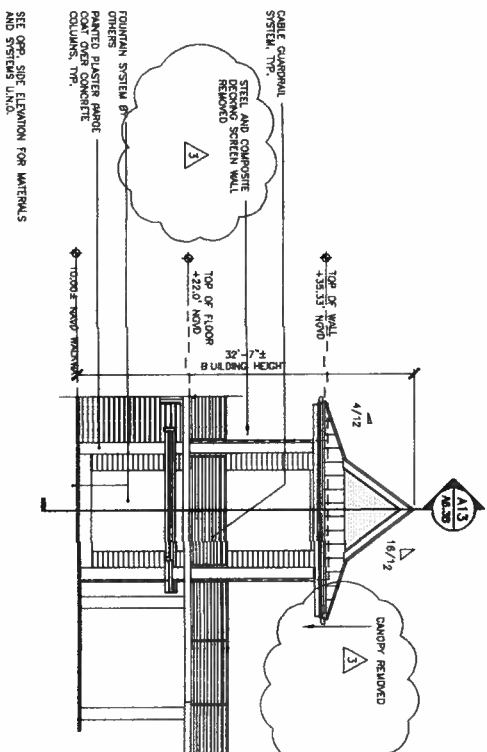
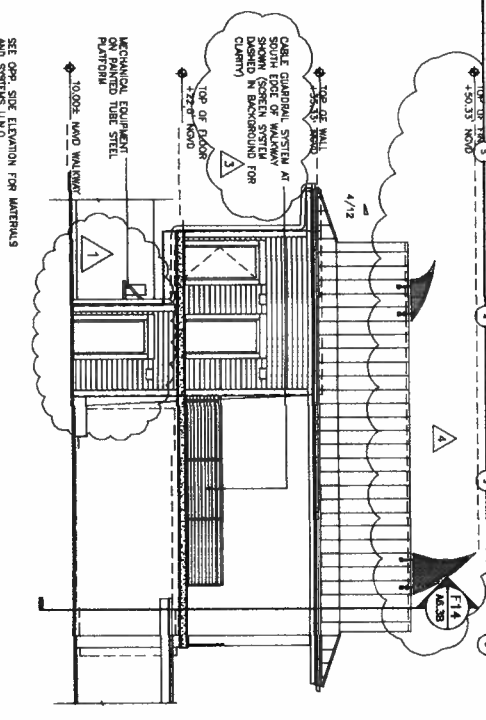
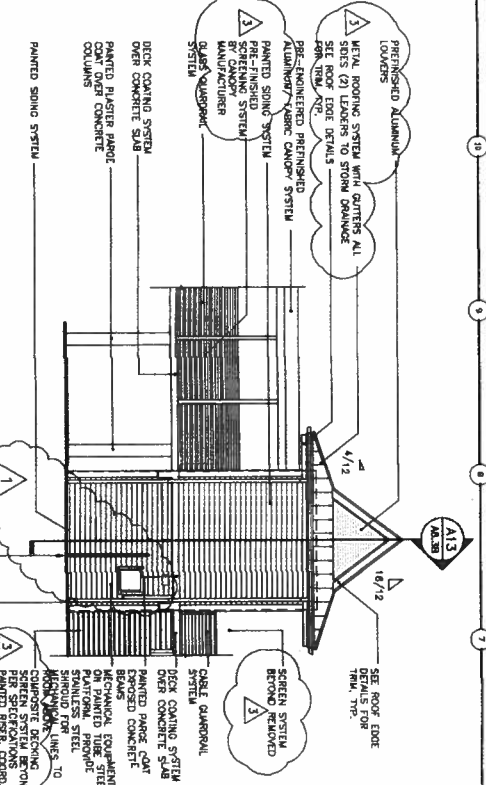


SCREEN SYSTEM NORTH ELEVATION

SCREEN SYSTEM NORTH ELEVATION

ELEVATOR BUILDING EAST ELEVATION

ELEVATOR BUILDING NORTH ELEVATION



SOUND SYSTEM THIS BUILDING TO HAVE 7'-1/2" CORNER TRIM AND 5'-1/2" VERTICAL DOOR AND WINDOW TRIM

PRE-FINISHED ALUMINUM WINDOW SYSTEM, TYP.

METAL ROOFING SYSTEM

SEE ROOF EDGE DETAILS FOR TRIM, TYP. WITH STANDING SEAM/RAINSON WITH CUSTOM DOOR

PRE-FINISHED ALUMINUM/ALUMINUM FABRIC CANOPY SYSTEM

PRE-FINISHED ALUMINUM/ALUMINUM FABRIC CANOPY SYSTEM

PRE-FINISHED ALUMINUM/ALUMINUM FABRIC CANOPY SYSTEM

PRE-FINISHED ALUMINUM/ALUMINUM FABRIC CANOPY SYSTEM

PRE-FINISHED ALUMINUM/ALUMINUM FABRIC CANOPY SYSTEM

PRE-FINISHED ALUMINUM/ALUMINUM FABRIC CANOPY SYSTEM

PRE-FINISHED ALUMINUM/ALUMINUM FABRIC CANOPY SYSTEM

1	FOUNDATION	11-20-12	11-20-12
2	FOUNDATION	04-15-12	04-15-12
3	FOUNDATION	04-15-12	04-15-12
4	FOUNDATION	04-15-12	04-15-12
5	FOUNDATION	04-15-12	04-15-12
6	FOUNDATION	04-15-12	04-15-12
7	FOUNDATION	04-15-12	04-15-12
8	FOUNDATION	04-15-12	04-15-12
9	FOUNDATION	04-15-12	04-15-12
10	FOUNDATION	04-15-12	04-15-12
11	FOUNDATION	04-15-12	04-15-12
12	FOUNDATION	04-15-12	04-15-12
13	FOUNDATION	04-15-12	04-15-12
14	FOUNDATION	04-15-12	04-15-12
15	FOUNDATION	04-15-12	04-15-12
16	FOUNDATION	04-15-12	04-15-12
17	FOUNDATION	04-15-12	04-15-12
18	FOUNDATION	04-15-12	04-15-12
19	FOUNDATION	04-15-12	04-15-12
20	FOUNDATION	04-15-12	04-15-12
21	FOUNDATION	04-15-12	04-15-12
22	FOUNDATION	04-15-12	04-15-12
23	FOUNDATION	04-15-12	04-15-12
24	FOUNDATION	04-15-12	04-15-12
25	FOUNDATION	04-15-12	04-15-12
26	FOUNDATION	04-15-12	04-15-12
27	FOUNDATION	04-15-12	04-15-12
28	FOUNDATION	04-15-12	04-15-12
29	FOUNDATION	04-15-12	04-15-12
30	FOUNDATION	04-15-12	04-15-12
31	FOUNDATION	04-15-12	04-15-12
32	FOUNDATION	04-15-12	04-15-12
33	FOUNDATION	04-15-12	04-15-12
34	FOUNDATION	04-15-12	04-15-12
35	FOUNDATION	04-15-12	04-15-12
36	FOUNDATION	04-15-12	04-15-12
37	FOUNDATION	04-15-12	04-15-12
38	FOUNDATION	04-15-12	04-15-12
39	FOUNDATION	04-15-12	04-15-12
40	FOUNDATION	04-15-12	04-15-12
41	FOUNDATION	04-15-12	04-15-12
42	FOUNDATION	04-15-12	04-15-12
43	FOUNDATION	04-15-12	04-15-12
44	FOUNDATION	04-15-12	04-15-12
45	FOUNDATION	04-15-12	04-15-12
46	FOUNDATION	04-15-12	04-15-12
47	FOUNDATION	04-15-12	04-15-12
48	FOUNDATION	04-15-12	04-15-12
49	FOUNDATION	04-15-12	04-15-12
50	FOUNDATION	04-15-12	04-15-12
51	FOUNDATION	04-15-12	04-15-12
52	FOUNDATION	04-15-12	04-15-12
53	FOUNDATION	04-15-12	04-15-12
54	FOUNDATION	04-15-12	04-15-12
55	FOUNDATION	04-15-12	04-15-12
56	FOUNDATION	04-15-12	04-15-12
57	FOUNDATION	04-15-12	04-15-12
58	FOUNDATION	04-15-12	04-15-12
59	FOUNDATION	04-15-12	04-15-12
60	FOUNDATION	04-15-12	04-15-12
61	FOUNDATION	04-15-12	04-15-12
62	FOUNDATION	04-15-12	04-15-12
63	FOUNDATION	04-15-12	04-15-12
64	FOUNDATION	04-15-12	04-15-12
65	FOUNDATION	04-15-12	04-15-12
66	FOUNDATION	04-15-12	04-15-12
67	FOUNDATION	04-15-12	04-15-12
68	FOUNDATION	04-15-12	04-15-12
69	FOUNDATION	04-15-12	04-15-12
70	FOUNDATION	04-15-12	04-15-12
71	FOUNDATION	04-15-12	04-15-12
72	FOUNDATION	04-15-12	04-15-12
73	FOUNDATION	04-15-12	04-15-12
74	FOUNDATION	04-15-12	04-15-12
75	FOUNDATION	04-15-12	04-15-12
76	FOUNDATION	04-15-12	04-15-12
77	FOUNDATION	04-15-12	04-15-12
78	FOUNDATION	04-15-12	04-15-12
79	FOUNDATION	04-15-12	04-15-12
80	FOUNDATION	04-15-12	04-15-12
81	FOUNDATION	04-15-12	04-15-12
82	FOUNDATION	04-15-12	04-15-12
83	FOUNDATION	04-15-12	04-15-12
84	FOUNDATION	04-15-12	04-15-12
85	FOUNDATION	04-15-12	04-15-12
86	FOUNDATION	04-15-12	04-15-12
87	FOUNDATION	04-15-12	04-15-12
88	FOUNDATION	04-15-12	04-15-12
89	FOUNDATION	04-15-12	04-15-12
90	FOUNDATION	04-15-12	04-15-12
91	FOUNDATION	04-15-12	04-15-12
92	FOUNDATION	04-15-12	04-15-12
93	FOUNDATION	04-15-12	04-15-12
94	FOUNDATION	04-15-12	04-15-12
95	FOUNDATION	04-15-12	04-15-12
96	FOUNDATION	04-15-12	04-15-12
97	FOUNDATION	04-15-12	04-15-12
98	FOUNDATION	04-15-12	04-15-12
99	FOUNDATION	04-15-12	04-15-12
100	FOUNDATION	04-15-12	04-15-12

PROJECT TITLE:

SHARKY'S ON THE PIER RESTAURANT EXPANSION

VENICE, FLORIDA

CURRENT ISSUE STATUS:

PERMIT SET

SCALE:

1" = 1'

PROJECT MANAGER:

AAA

DATE:

07/08/11

PROJECT NO.:

08288

DATE:

07/08/11

SHEET TITLE:

EXTERIOR ELEVATIONS

SHEET NO.:

A5.3B

TOTeMS ARCHITECTURE INC.

2164 Main Street

Sarasota, Florida 34237

tel. (941) 952-0004

fax. (941) 952-0201

FL.AA26000257

JEROLD P. SPARKMAN

AR 0201475

