

# UTILITY RECORD DRAWINGS FOR CURRY LANE IMPROVEMENTS

SECTION 33, TOWNSHIP 38 S, RANGE 19 E  
NORTH VENICE, FLORIDA

MARCH 2022

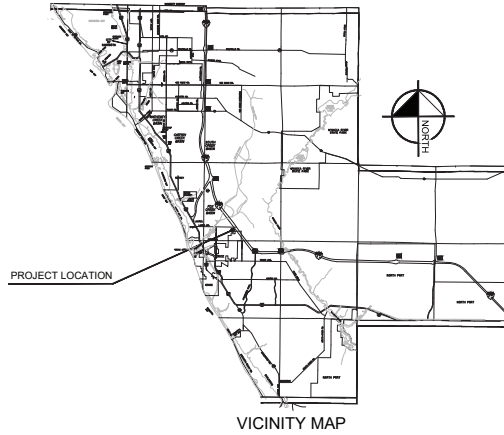
Sheet List Table	
Sheet Number	Sheet Title
A-01	COVER SHEET
A-02	GENERAL NOTES AND TYPICAL SECTION
A-03	AERIAL SITE PLAN
A-04	EXISTING CONDITIONS AND DEMOLITION PLAN
A-05	EXISTING CONDITIONS AND DEMOLITION PLAN
A-06	BEST MANAGEMENT PRACTICES PLAN
A-07	BEST MANAGEMENT PRACTICES PLAN
A-08	BEST MANAGEMENT PRACTICES DETAILS
A-09	PAVING GRADING AND DRAINAGE PLAN
A-10	PAVING GRADING AND DRAINAGE PLAN
C-01	MASTER UTILITY PLAN
C-02	PLAN AND PROFILE INDEX PLAN
C-03	PLAN AND PROFILE
C-04	PLAN AND PROFILE
C-05	PLAN AND PROFILE
C-06	OFFSITE PLAN AND PROFILE
C-07	OFFSITE PLAN AND PROFILE
C-08	OFFSITE PLAN AND PROFILE
C-09	OFFSITE PLAN AND PROFILE
C-10	CITY OF VENICE WATER AND SEWER DETAILS
C-11	CITY OF VENICE WATER AND SEWER DETAILS
C-12	CITY OF VENICE WATER AND SEWER DETAILS
C-13	CITY OF VENICE LIFT STATION DETAILS
C-14A	PUMP AND CITY OF VENICE LIFT STATION DETAILS - SCENARIO 1
C-14B	PUMP AND CITY OF VENICE LIFT STATION DETAILS - SCENARIO 2
C-14C	PUMP AND CITY OF VENICE LIFT STATION DETAILS - SCENARIO 3

## GENERAL NOTES:

- ALL CONSTRUCTION TO BE IN ACCORDANCE WITH THE CITY OF VENICE LAND DEVELOPMENT REGULATIONS.
- THE CONTRACTOR SHALL RETAIN ON THE WORK SITE AT ALL TIMES COPIES OF ALL PERMITS NECESSARY FOR CONSTRUCTION.
- THE NORTH AMERICAN VERTICAL DATUM (NAVD) OF 1988 IS THE BENCHMARK DATUM FOR THIS PROJECT. CONVERSION FACTOR: NAVD 1988 = 1.1577 FEET U.S.
- ALL AREAS DESIGNATED AS "PRESERVE OR CONSERVATION" TO BE CLEARLY DELINEATED PRIOR TO CONSTRUCTION.

## GENERAL CONSTRUCTION NOTES:

- THESE SHALL BE NO CHANGE OR DEVIATION FROM THESE PLANS UNLESS APPROVED BY THE ENGINEER OR CITY OF VENICE.
- ALL CLEARING AND GRUBBING DEBRIS TO BE BURNED OR REMOVED FROM SITE AND NOT PART OF CLEARING AND GRUBBING ITEM.
- IT IS THE INTENT OF THE OWNER THAT CERTAIN TREES BE DESIGNATED TO BE SAVED AND PROTECTED BY THE CONTRACTOR. IT IS ASSUMED THESE TREES ARE HEALTHY AND ARE EXPECTED TO BE PART OF THE LANDSCAPE DEVELOPMENT. THEREFORE IF ANY TREES DAMAGED BY CONSTRUCTION OPERATION OR OTHER MEANS INCLUDING LAND TRIMMING AND OTHER ACTS OF GOD DURING WITHIN THE CONSTRUCTION PERIOD, IT WILL BE THE RESPONSIBILITY OF THE CONTRACTOR TO REMOVE AND DISPOSE OF THOSE TREES. NO ADDITIONAL COMPENSATION WILL BE MADE BY THE OWNER FOR THE LABOR, MATERIAL OR MACHINERY REQUIRED TO REMOVE SAID TREES. EXCEPT VEGETATION (E.G. MULETIA AND BRUGMANNIA PEPPER) EXISTING WITHIN THE PROJECT AREA SHALL BE REMOVED AND PROPERLY DEPOSED OF IN AN APPROVED LANDFILL.
- WHERE EXCAVATIONS ARE IN CLOSE PROXIMITY OF TREES, THE CONTRACTOR SHALL USE EXTREME CARE NOT TO DAMAGE THE ROOT SYSTEM AND EQUIPMENT. SUPPLIES OF VEHICLES SHALL BE STORED OR PARKED WITHIN THE CURB LINE OF TREES TO MAINTAIN AND PRESERVE ROOTS. IT WILL BE THE RESPONSIBILITY OF THE CONTRACTOR TO INFORM ALL OF HIS EMPLOYEES AND SUBCONTRACTORS OF THIS REQUIREMENT AND TO ENFORCE SAME.
- LAY SOIL AROUND ALL INLET, METEERED ENDWALLS, BAWALES, LARGE SLOPES, AND TWO FEET (2') WIDE STRIP ADJACENT TO ALL CURBING, AND AS DIRECTED BY THE ENGINEER. ALL PROPOSED GROUND ELEVATIONS ARE FINISHED SOLE ELEVATIONS. FINISH EXISTING GROUND WILL BE 0.5 FEET BELOW ELEVATIONS SHOWN TO ALLOW FOR SOIL THICKNESS. SOODING INCLUDES MOUNTING SLOPES AND SOO UNITS. COMPLETION AND ACCEPTANCE OF TOTAL PROJECT OR GREATER ESTABLISHED BY OWNER COMES LAST. ALL EROSION, SEDIMENT AND MAINTENANCE GRASSES BY THE RESPONSIBILITY OF THE CONTRACTOR UNIT, THEN.
- CALL SUBMITTER (1-800-454-4770), CONTACT: EPA, CITY OF VENICE UTILITY DEPARTMENT, TEOO, AND FRONTIER PRIOR TO CONSTRUCTION AND CONNECTION TO EXISTING UTILITIES. IT IS THE CONTRACTOR'S RESPONSIBILITY TO PROTECT EXISTING UTILITIES FROM DAMAGE.
- ALL UTILITY LINES, STORM DRAIN LINES AND ACCESSORIES SUCH AS, BUT NOT LIMITED TO, MANHOLES, CLEANOUTS, SEWER AND WATER SERVICES, VALVES, FIRE HYDRANTS AND INLETS WILL BE CONSTRUCTED TO ALIGNMENT AND LOCATIONS SHOWN ON PLANS UNLESS OTHERWISE DIRECTED BY THE ENGINEER.
- CLEARING, GRUBBING, STRIPPING, AND COMPACTION WILL BE INSPECTED BY THE ENGINEER PRIOR TO FILLING.
- PRIOR TO THE START OF CONSTRUCTION ACTIVITIES, CONSERVATION/PRESERVE AREAS, EXISTING LAKES & WATERWAYS WITHIN AND ADJOINING THE AREA OF CONSTRUCTION ACTIVITY SHALL BE PROTECTED BY ERECTION OF PRESERVE BARRIERS AND/OR BAY BARRIERS. TREE PROTECTION BARRIERS SHALL MEET THE STANDARDS OF THE CITY OF VENICE. BAY BARRIERS SHALL BE CONSTRUCTED IN ACCORDANCE WITH THE "BEST MANAGEMENT PRACTICES PLAN" AND THE "BMP INSTALLATION MANUAL" THROUGHOUT THE FULL CONSTRUCTION PERIOD. THE ENGINEER WILL DETERMINE THE EXTENT AND TYPE OF PROTECTIVE MEASURES TO BE CONSTRUCTED FOR PROTECTION OF CONSERVATION/PRESERVE AREAS. THE ENGINEER SHALL BE NOTIFIED WHEN PRESERVE AREAS BARRIERS AND BARRIERS ARE IN PLACE.
- THE SITE CONSTRUCTION STAKEOUT SHALL BE PERFORMED UNDER THE DIRECTION OF A FLORIDA REGISTERED SURVEYOR. AUTOCAD FILES WILL BE FURNISHED TO AND BY THE SITE CONSTRUCTION STAKEOUT. ANY DISCREPANCIES FOUND BETWEEN THE AUTOCAD FILES AND SITE CONSTRUCTION PLANS SHALL BE BROUGHT TO THE ENGINEER'S ATTENTION FOR CLARIFICATION PRIOR TO THE STAKEOUT.
- ALL DRAINAGE PIPE JOINTS SHALL BE WRAPPED PER FOOT INDEX NO. 280, SHEET 1.
- ROADWAY AND DRAINAGE STRUCTURES SHALL MEET FOOT STANDARD SPECIFICATIONS SECTION 346 OF 2000 P&C CONCRETE.
- THE WETLAND AND ASSOCIATED UPLAND VEGETATIVE BUFFER SHALL BE MAINTAINED IN ACCORDANCE WITH MANAGEMENT GUIDELINES CONTAINED WITHIN THE CONSERVATION PLAN OR CONSERVATION AREA OR PRESERVE. ALL WETLANDS INVOLVED INCLUDING, LOCATIONS WILL INCLUDE, ADDITIONAL VEGETATION INCLUDING TRIMMING OF BOTH TREES AND UNDERSTORY AND STORAGE OF MATERIALS WILL BE PROHIBITED WITHIN PRESERVATION AREAS. UNLESS OTHERWISE NOTIFIED BY THE ENGINEER, PROTECTION SERVICES TO FACILITATE IMPLEMENTATION OF APPROVED HABITAT MANAGEMENT PLANS OR THE REMOVAL OF NUISANCE INVASIVE VEGETATION.
- A TREE REMOVAL AND PROTECTION PERMIT WILL BE REQUIRED PRIOR TO ANY CONSTRUCTION, CLEARING OR TREE REMOVAL. ALL WORK PERFORMED SHALL BE IN ACCORDANCE WITH THE CITY OF VENICE CODE.
- EROSION AND SEDIMENT CONTROL, BMP'S ACCORD TO THOSE PRESENTED ON THE PLANS AND OUTLINED IN THE EROSION AND SEDIMENT CONTROL PLAN (E/SC) BEST MANAGEMENT PRACTICES (BMP) PLAN, OR STORMWATER POLLUTION PREVENTION PLAN (SWPPP) SHALL BE IMPLEMENTED AS NECESSARY TO PREVENT EROSION AND SEDIMENTATION FROM OCCURRING ON DRIVEWAYS, OR OFF SITE STORMWATER CONDUITS OR ROADWAY WATERS, OR ON SITE WETLANDS AND SURFACE WATERS. BMP'S SHALL BE DESIGNED, INSTALLED, AND MAINTAINED BY THE SITE OPERATOR TO ENSURE THAT OFF SITE SURFACE WATER QUALITY REMAINS CONSISTENT WITH STATE AND LOCAL REGULATIONS. THE OPERATOR IS THE ENTITY THAT OWNS OR OPERATES THE CONSTRUCTION ACTIVITY AND HAS AUTHORITY TO CONTROL THOSE ACTIVITIES AT THE PROJECT NECESSARY TO ENSURE COMPLIANCE.
- OFFSITE SURFACE WATER DISCHARGES, DISCHARGES TO THE MSA, OR DISCHARGES TO ONSITE WETLANDS OR SURFACE WATERS WITH TURBIDITY IN EXCESS OF 20 NINE POINT FIVE TURBIDITY UNITS (NTU) MUST BE MONITORED. MONITORING LEVEL SHALL BE IMMEDIATELY CORRECTED. SUCH INCIDENTS SHALL BE REPORTED TO THE CITY OF VENICE WITHIN 24 HOURS OF THE OCCURRENCE. THE REPORT SHALL INCLUDE THE CAUSE OF THE DISCHARGE AND CORRECTIVE ACTIONS TAKEN.
- FUEL AND OTHER PETROLEUM PRODUCT SPILLS THAT ENTER STORMWATER DRAINS OR WATERBODIES, OR FUEL AND OTHER PETROLEUM PRODUCT SPILLS THAT ARE IN EXCESS OF 30 GALLONS SHALL BE CONTAINED, CLEANED UP, AND IMMEDIATELY REPORTED TO THE CITY OF VENICE. SMALLER GROUND SURFACE SPILLS SHALL BE CLEANED UP AS SOON AS PRACTICAL.
- IF CONTAMINATED SOIL AND/OR GROUNDWATER IS DISCOVERED DURING DEVELOPMENT OF THE SITE, ALL ACTIVITY IN THE VICINITY OF THE CONTAMINATION SHALL IMMEDIATELY CEASE, AND THE CITY OF VENICE SHALL BE CONTACTED.
- FERTILIZER APPLICATION SHALL BE CONSISTENT WITH THE CITY OF VENICE CODE.
- NATIONAL POLLUTANT DISCHARGE ELIMINATION SYSTEM - STORMWATER:
  - MPOES CONSTRUCTION GENERAL PERMIT COVERAGE SHALL BE OBTAINED AT LEAST 48 HOURS IN ADVANCE OF CONSTRUCTION COMMENCEMENT IN ACCORDANCE WITH RULE 62-401.300(4)(A), F.A.C.
  - A COPY OF THE CERTIFIED MPOES NOI, OR A COPY OF THE FOEP COVERAGE CONFIRMATION LETTER SHALL BE POSTED AT THE SITE IN ACCORDANCE WITH RULE 62-401.300(4)(A) PART 2, F.A.C.
  - A COPY OF THE CERTIFIED MPOES NOI, OR A COPY OF THE FOEP COVERAGE CONFIRMATION LETTER SHALL BE PROVIDED TO AIR AND WATER QUALITY IN ACCORDANCE WITH RULE 62-401.300(4)(A) PART 1(b), F.A.C.
  - THE SWPPP SHALL BE CERTIFIED IN ACCORDANCE WITH RULE 62-401.300(4)(A) PART 2, F.A.C. AND A COPY OF THE CERTIFIED DOCUMENT SHALL BE SUBMITTED TO AIR AND WATER QUALITY AT LEAST 48 HOURS PRIOR TO THE COMMENCEMENT OF CONSTRUCTION.
  - A COPY OF THE SWPPP AND COPIES OF THE INSPECTION AND MAINTENANCE RECORDS SHALL BE MAINTAINED AT THE PROJECT SITE, AND SHALL BE READILY AVAILABLE TO STATE INSPECTORS.
- NATIONAL POLLUTANT DISCHARGE ELIMINATION SYSTEM - SEWERTREATING:
  - THE RELEASE OF GROUNDWATER PRODUCED THROUGH DOWNGRADING, TO SURFACE WATERS, OR TO ANY PORTION OF THE MSA WILL REQUIRE SEPARATE PERMITTING FROM THE DEP. PERMITS SHALL BE OBTAINED PRIOR TO THE COMMENCEMENT OF DOWNGRADING. ANALYTICAL RESULTS FROM PROGRESSIVE TESTING SHALL BE PROVIDED TO AIR AND WATER QUALITY.
- THE CONTRACTOR SHALL ENSURE THAT ADJACENT PROPERTIES ARE NOT IMPACTED BY AND EROSION OR DEPOSITION OF UNCONFINED PARTICULATE MATTER. IN ACCORDANCE WITH RULE 62-096.302(6)(c), FLORIDA ADMINISTRATIVE CODE, FROM THE CONSTRUCTION SITE BY TAKING ADEQUATE MEASURES TO STABILIZE AFFECTED AREAS.
- DEPARTMENT OF ENVIRONMENTAL PROTECTION WATER AND WASTEWATER PERMITS ARE REQUIRED.
- ANY WELLS DISCOVERED ON SITE THAT WILL HAVE NO USE MUST BE PLUGGED BY A LICENSED WELL DRILLING CONTRACTOR IN AN APPROVED MANNER.
- IN THE EVENT THAT THE CONSTRUCTION SITE IS ABANDONED PRIOR TO THE PROJECT COMPLETION, ALL CONSTRUCTION AND VEGETATIVE DEBRIS SHALL BE REMOVED FROM THE SITE AND DISPOSED OF AT AN APPROVED LANDFILL FACILITY.
- A SEPARATE BILLING PERMIT MUST BE APPLIED FOR AND ISSUED FOR EVERY SIGN, WALL, OUTDOOR LIGHTING AND STRUCTURE ON THE SITE. THE APPROVAL OF THESE CONSTRUCTION PLANS DOES NOT EXEMPT THE CONTRACTOR FROM OBTAINING THE NECESSARY BILLING PERMITS.



## CITY OF VENICE REQUIRED NOTES:

- ALL WORK CONDUCTED IN THE CITY OF VENICE RIGHT-OF-WAY (ROW) WILL REQUIRE THE ISSUANCE OF A ROW PERMIT.
- ALL WORK CONDUCTED IN SARASOTA COUNTY AND/OR FOOT ROW SHALL REQUIRE A COPY OF STATE BILLED PERMITS.
- TREE REMOVAL PERMIT MUST BE OBTAINED FROM THE CITY OF VENICE.
- POST DEVELOPMENT RUNOFF DOES NOT EXCEED PRE-DEVELOPMENT RUNOFF VOLUME OR RATE FOR A 24 HOUR, 25-YEAR STORM EVENT.
- ALL FIRE SERVICE BACKFLOW ASSEMBLIES SHALL BE INSTALLED BY A CERTIFIED CONTRACTOR WITH A CLASS 1B OR V CERTIFICATE OF COMPETENCY ISSUED BY THE STATE FIRE MARSHAL AS PER F.S. 633.021.
- CONSTRUCTION SITE MUST BE POSTED WITH SUCCEEDING INFORMATION.
- ALL UTILITIES BENEATH PUBLIC OR PRIVATE SHALL MEET CITY OF VENICE STANDARDS.
- CONTRACT PUBLIC WORKING SOLID WASTE ORDINANCE (54-488-202) FOR APPROVAL OF DUMPSTER LOCATION AND LAYOUT PRIOR TO CONSTRUCTION.

LOCATION MAP

PREPARED BY  
**Kimley»Horn**

© 2021 KIMLEY-HORN AND ASSOCIATES, INC.  
1777 MAIN STREET, Suite 200, Sarasota, FL 34236  
PHONE: (941) 539-7800  
WWW.KIMLEY-HORN.COM | REGISTRY NO. 696



**RECORD DRAWINGS**

**April 21, 2022**

**APPROVED**

## UTILITY COMPANIES:

- |  |  |
|--|--|
| FPL<br>5657 NORTH McINTOSH ROAD<br>SARASOTA, FLORIDA 34233                   | TECO GAS<br>8261 VICO COURT<br>SARASOTA, FLORIDA 34240-7844      |
| FRONTIER<br>1701 RINGLING BLVD.<br>SARASOTA, FLORIDA 34236<br>941-958-6711   | COMCAST CABLE<br>5205 FRUITVILLE ROAD<br>SARASOTA, FLORIDA 34232 |
| VENICE UTILITIES<br>601 W. VENICE AVE.<br>VENICE, FL 34285<br>(941) 862-7297 | CONTACT: PATIENCE ANATASIO                                       |

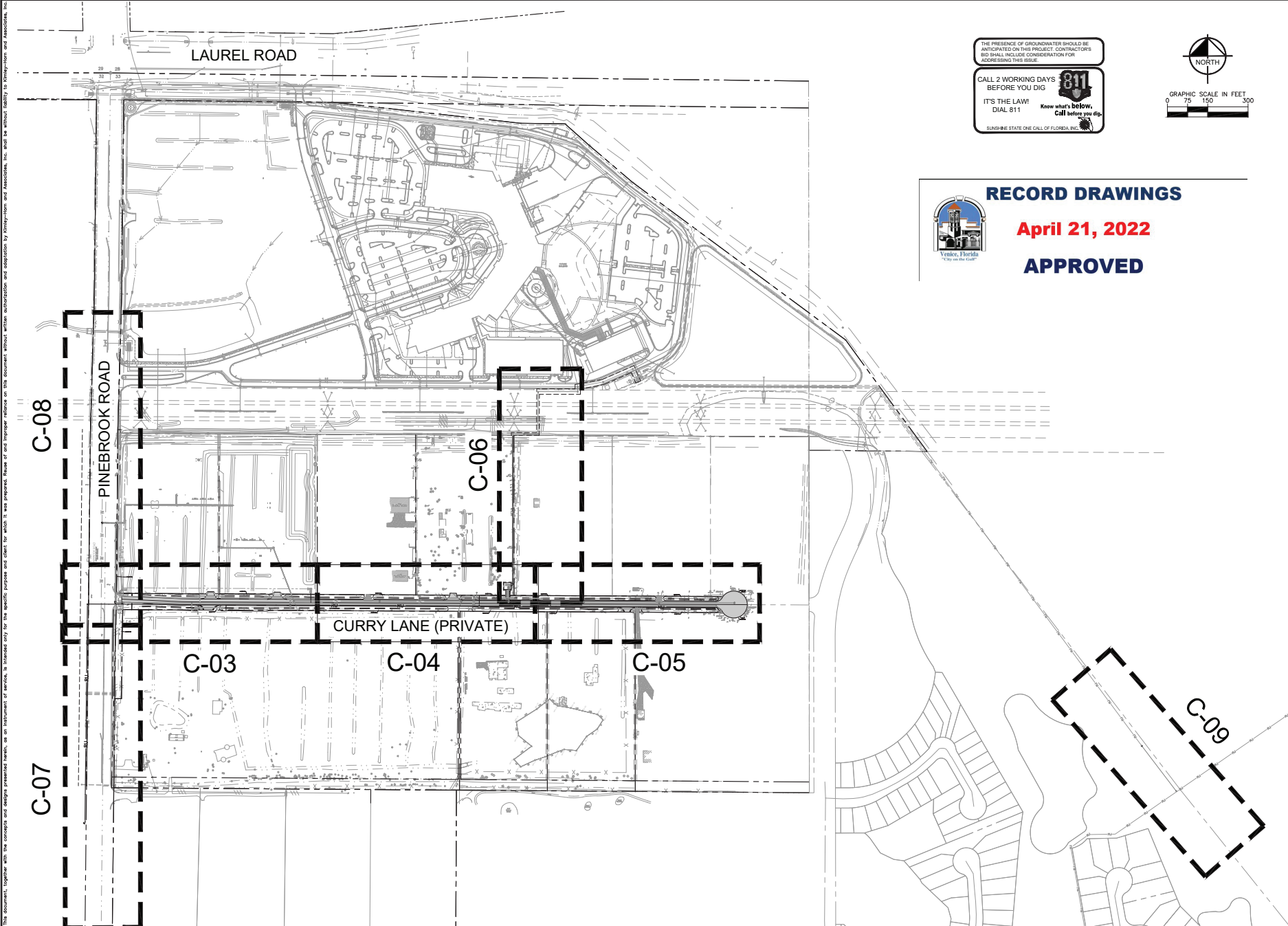
I HEREBY CERTIFY THAT THE DESIGN OF THIS PROJECT, AS PREPARED UNDER MY PERSONAL DIRECTION AND CONTROL, COMPLIES WITH ALL APPLICABLE STANDARDS, INCLUDING THE MINIMUM STANDARDS FOR DESIGN, CONSTRUCTION AND MAINTENANCE FOR STREETS AND HIGHWAYS AS ADOPTED BY THE FLORIDA DEPARTMENT OF TRANSPORTATION PURSUANT TO SUBSECTIONS 335.07(1) AND 335.07(2), F.S.

STATE OF FLORIDA  
COUNTY OF SARASOTA  
No. 79400  
REGISTRY NO. 696

DATE: \_\_\_\_\_

This document, together with the complete set of design presented herewith, is prepared only for the specific purpose and cost for which it was prepared. No other use or reproduction of any part hereof is authorized without the prior written consent of Kimley-Horn and Associates, Inc.





THIS DOCUMENT, TOGETHER WITH THE CONCEPTS AND DESIGN PRESENTED HEREIN, OR AN INSTRUMENT OF SERVICE, IS PREPARED ONLY FOR THE SPECIFIC PURPOSE AND CLIENT FOR WHICH IT WAS PREPARED. THESE OF AND NEITHER PROVIDE A BASIS FOR ANY OTHER PROJECT OR DESIGN. ANY REUSE OR MODIFICATION OF THIS DOCUMENT WITHOUT WRITTEN AUTHORIZATION AND APPROVAL BY THE ENGINEER OR ARCHITECT IS PROHIBITED. THE USER SHALL BE RESPONSIBLE FOR OBTAINING ALL NECESSARY PERMITS AND APPROVALS FROM THE APPROPRIATE AGENCIES.

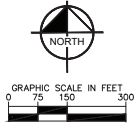
THE PRESENCE OF GROUNDWATER SHOULD BE ANTICIPATED ON THIS PROJECT. CONTRACTORS SHOULD INCLUDE CONSIDERATION FOR ADDRESSING THIS ISSUE.

CALL 2 WORKING DAYS BEFORE YOU DIG

IT'S THE LAW! DIAL 811

Know what's below. Call before you dig.

SUNSHINE STATE ONE CALL OF FLORIDA, INC.



**RECORD DRAWINGS**

**April 21, 2022**

**APPROVED**



<b>CURRY LANE IMPROVEMENTS</b> PREPARED FOR <b>CAH DEVELOPMENTS, LLC</b> CITY OF VENICE, FL	<b>PLAN AND PROFILE</b> <b>INDEX PLAN</b>	KHA PROJECT NO. 2021-0001 DATE: DECEMBER 2021 SCALE: AS SHOWN DESIGNED BY: KHA DRAWN BY: DMA CHECKED BY: KCC	LICENSED PROFESSIONAL <b>RYAN R. HOPPE, P.E.</b> FL LICENSE NUMBER: 79400 DATE:	<b>Kimley-Horn</b> <small>© 2021 KIMLEY-HORN AND ASSOCIATES, INC.          1777 MAIN STREET, SUITE 200, SARASOTA, FL 34236          WWW.KIMLEY-HORN.COM • TELEPHONE: 941.552.3333</small>	REVISIONS No. DATE BY
		SHEET NUMBER <b>C-02</b>			No. DATE BY

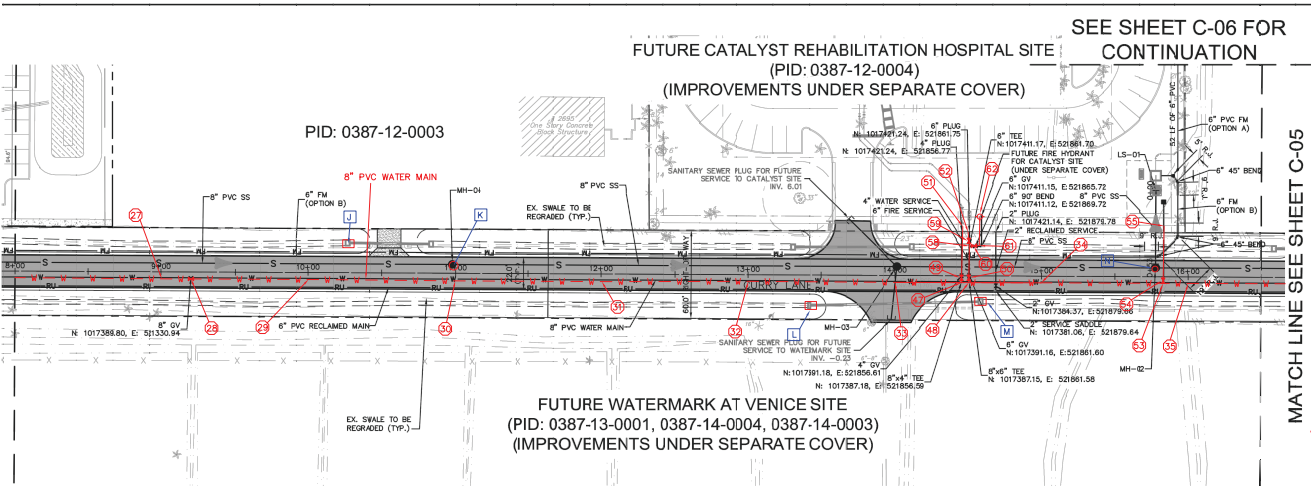






April 21, 2022  
APPROVED

MATCH LINE SEE SHEET C-03



MATCH LINE SEE SHEET C-05

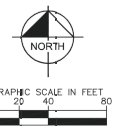
FUTURE CATALYST REHABILITATION HOSPITAL SITE  
(PID: 0387-12-0004)  
(IMPROVEMENTS UNDER SEPARATE COVER)

PID: 0387-12-0003

FUTURE WATERMARK AT VENICE SITE  
(PID: 0387-13-0001, 0387-14-0004, 0387-14-0003)  
(IMPROVEMENTS UNDER SEPARATE COVER)

CURRY LANE

SEE SHEET C-06 FOR CONTINUATION



**SURVEYORS NOTES:**  
THIS IS NOT A BOUNDARY SURVEY.  
THE INFORMATION DEPICTED ON THIS MAP REPRESENTS THE RESULT OF A SURVEY PERFORMED ON THE RECORDS AND PLAN AND ON ONLY THE CONDITIONS AS RECORDING THE GENERAL CONDITIONS AT THE TIME.  
THERE ARE NO UNRECORDED ENCUMBRANCES OTHER THAN EASEMENTS OR EASEMENTS OF RECORD, EASEMENTS OR CLAIMS OF EASEMENTS OF WHICH THIS FIRM HAS KNOWLEDGE.  
NO UNDERGROUND UTILITIES, FACILITIES, FOUNDATIONS OR IMPROVEMENTS, IF ANY, HAVE BEEN LOCATED DEEPER AS SHOWN.  
ALL AS-BUILT DATA PROVIDED IN THIS SET OF PLANS, ALL OTHER INFORMATION SHOWN WAS PROVIDED BY THIRD-PARTY AND SURVEYORS, INC.  
ALL ELEVATIONS SHOWN HEREIN ARE REDUCED TO MARS D. 1985.  
STANDARD CHARACTERS AND OR PORTIONS MAY NOT BE DEPICTED TO SCALE AND ARE FOR CLARIFICATION PURPOSES.  
THIS SURVEY IS PROTECTED BY COPYRIGHT AND IS ONLY LOANED TO THE PERSONS LISTED HEREIN. ANY REPRODUCTION OR ALTERATION TO ANY PART OF THIS SURVEY OR ORDER FROM THE SURVEY PARTY IS PROHIBITED UNLESS THE CONSENT OF THE SURVEY PARTY AND THE APPROVED SIGNATURE OF THE SURVEYOR IS OBTAINED.

"RECORD DRAWING"  
UTILITY AS-BUILT DATA PROVIDED BY:

**FLORIDA ENGINEERING & SURVEYING, LLC**  
CA #30375 LB #8024  
631 N. TAMiami TRAIL  
NOKOMIS, FLORIDA 34475  
TEL: (941) 485-8100  
FAX: (941) 485-8107  
www.flengineeringandsurveying.com  
© COPYRIGHTED MATERIAL 2022

- SWING THE REFERENCE POINTS**
- C = DRAINAGE INLET (MEASURE FROM CENTER OF MANHOLE)
  - D = DRAINAGE INLET (MEASURE FROM CENTER OF MANHOLE)
  - E = SANITARY MANHOLE (MEASURE FROM CENTER OF MANHOLE)
  - F = SANITARY MANHOLE (MEASURE FROM CENTER OF MANHOLE)
  - G = SANITARY MANHOLE (MEASURE FROM CENTER OF MANHOLE)
  - H = SANITARY MANHOLE (MEASURE FROM CENTER OF MANHOLE)
  - I = SANITARY MANHOLE (MEASURE FROM CENTER OF MANHOLE)
  - J = SANITARY MANHOLE (MEASURE FROM CENTER OF MANHOLE)
  - K = SANITARY MANHOLE (MEASURE FROM CENTER OF MANHOLE)
  - L = SANITARY MANHOLE (MEASURE FROM CENTER OF MANHOLE)
  - M = SANITARY MANHOLE (MEASURE FROM CENTER OF MANHOLE)
  - N = SANITARY MANHOLE (MEASURE FROM CENTER OF MANHOLE)
  - O = SANITARY MANHOLE (MEASURE FROM CENTER OF MANHOLE)
  - P = SANITARY MANHOLE (MEASURE FROM CENTER OF MANHOLE)
  - Q = SANITARY MANHOLE (MEASURE FROM CENTER OF MANHOLE)
  - R = SANITARY MANHOLE (MEASURE FROM CENTER OF MANHOLE)
  - S = SANITARY MANHOLE (MEASURE FROM CENTER OF MANHOLE)
  - T = SANITARY MANHOLE (MEASURE FROM CENTER OF MANHOLE)
  - U = SANITARY MANHOLE (MEASURE FROM CENTER OF MANHOLE)
  - V = SANITARY MANHOLE (MEASURE FROM CENTER OF MANHOLE)
  - W = SANITARY MANHOLE (MEASURE FROM CENTER OF MANHOLE)
  - X = SANITARY MANHOLE (MEASURE FROM CENTER OF MANHOLE)
  - Y = SANITARY MANHOLE (MEASURE FROM CENTER OF MANHOLE)
  - Z = SANITARY MANHOLE (MEASURE FROM CENTER OF MANHOLE)

I HEREBY CERTIFY THAT THE SURVEY SHOWN HEREON WAS PREPARED UNDER MY DIRECT SUPERVISION AND IS IN ACCORDANCE WITH THE STANDARDS OF PRACTICE FOR SURVEYS, CHAPTER 5J-17, FLORIDA ADMINISTRATIVE CODE, PURSUANT TO SECTION 472.027, FLORIDA STATUTES, SURVEY SHOWN HEREON "NOT VALID WITHOUT THE ORIGINAL SIGNATURE AND SEAL OF A FLORIDA LICENSED SURVEYOR AND MAPPER". THE DIGITAL SIGNATURE AND SEAL APPEARING ON THIS DOCUMENT WAS AUTHORIZED BY JUSTIN D. GARNER, PSM #6886 ON APRIL 12, 2022.

**REVISIONS**

3/24/2022, REVISION 01-01, TO: 1) 8\"/>

- AS-BUILT LEGEND**
- WM = WATER MAIN
  - FM = FORCE MAIN
  - RU = IRRIGATION MAIN
  - R.J. = RESTRAINED JOINT PIPE
  - 45° = 45° VERTICAL BENDS (PLAN)
  - DIR = DIRECTION OF FLOW
  - NOTE: IN-LINE VALVE IS NOT INCLUDED IN THE COST OF BLOW-OFF
  - (FOR FUTURE METER FOR LIFT STATION)

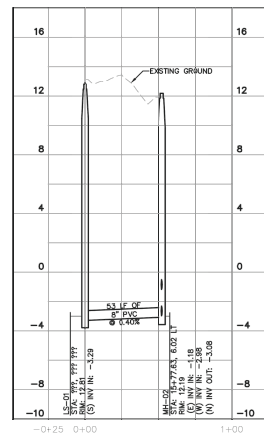
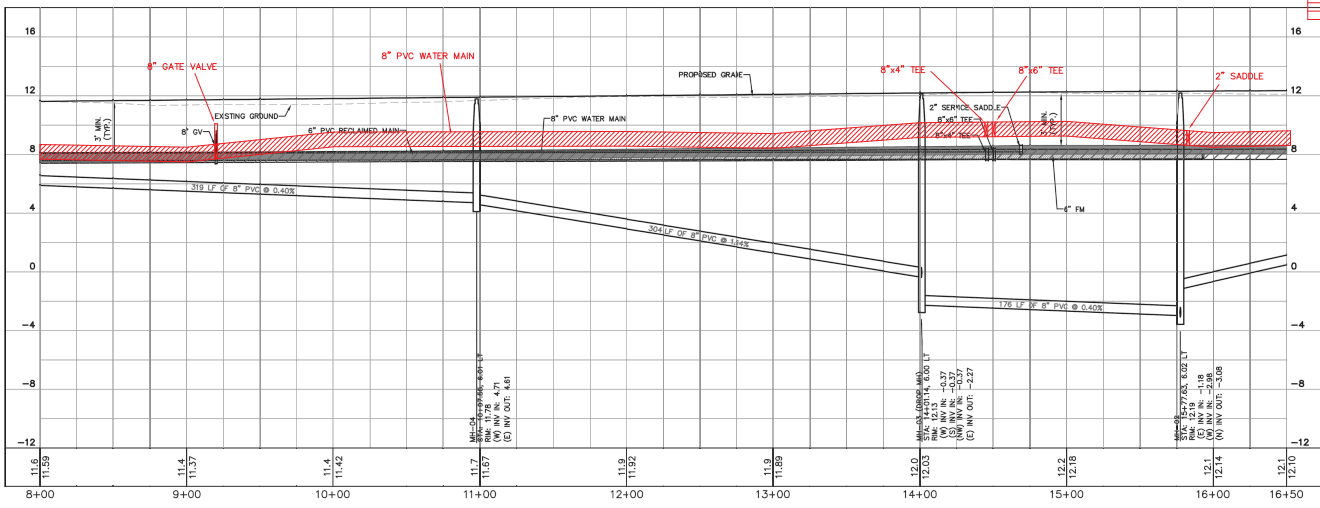
1. ALL UTILITY MAINS SHALL HAVE 3' OF COVER UNLESS OTHERWISE NOTED.
2. ALL WATER REUSE AND IRRIGATION MAINS SHALL BE PVC, C-900, DR-18, CL 235, UNLESS OTHERWISE NOTED.
3. ALL SANITARY SEWER MAINS SHALL BE PVC, SDR-26, UNLESS OTHERWISE INDICATED.
4. ALL SANITARY SEWER FORCE MAINS SHALL BE PVC, C900, DR-18 UNLESS OTHERWISE INDICATED.
5. ALL FIRE HYDRANTS SHALL BE LOCATED 1' BACK OF R/W TYPICALLY UNLESS OTHERWISE NOTED.
6. PROFILES ARE ROTATED FOR CLARITY.
7. SEE UTILITY DETAIL DRAWINGS FOR WATER, IRRIGATION, REUSE AND SEWER SERVICE TERMINATIONS.
8. SANITARY GRAVITY SEWER PIPE LENGTHS ARE FROM CENTER TO CENTER OF MANHOLES.
9. ALL WATER SERVICES AND CURB STOPS ARE 1", UNLESS OTHERWISE NOTED.
10. THE MAXIMUM ALLOWABLE PIPE DEFLECTION IS 75% OF THE MANUFACTURER'S RECOMMENDED MAXIMUM DEFLECTION.
11. FIELD DEFLECT MARKS TO CLEAR BEHIND INLETS WHERE REQUIRED AND MAINTAIN MINIMUM SEPARATION.
12. MAINS SHALL BE 5' BACK OF CURB (TYPICAL), UNLESS OTHERWISE NOTED OR SHOWN.
13. ALL SINGLE AND DOUBLE WATER SERVICES UNDER ROADWAYS ARE TO BE SLEEVED.
14. PIPE JOINTS SHALL BE RESTRAINED AS PER DETAILS AND NOTES ON DRAWING D-1.
15. PROFILE GRADE IS THE CENTERLINE OF PAVEMENT GRADE AND/OR ITS EXTENSION TO THE CONTROL LINE OF F/W (BASELINE).
16. ALL VALVE COVERS AND/OR PADS THAT ARE WITHIN, ADJACENT TO OR IN CLOSE PROXIMITY TO SIDEWALK SHALL BE ADJUSTED TO MATCH SIDEWALK GRACES.
17. ALL FIRE HYDRANT ASSEMBLIES SHALL INCLUDE A 6" GATE VALVE WHICH SHALL BE LOCATED AT THE TEE.
18. UTILITY SYMBOLS ON THE PLAN MAY APPEAR LARGER THAN ACTUAL SIZE OR MIXED FROM INTENDED LOCATION FOR CLARITY. UTILITY APPURTENANCES ARE TO BE INSTALLED PER DETAILS IN PLAN SET OR REFERENCED STANDARD DETAILS.
19. FORCE MAIN OPTION A IS THE PREFERRED OPTION FOR SEWER CONNECTION. OPTION B WILL BE COORDINATED WITH SARASOTA COUNTY IF CONNECTION IS DETERMINED TO BE NEEDED.

LEGEND

- WM WATER MAIN
- FM FORCE MAIN
- RU IRRIGATION MAIN
- R.J. RESTRAINED JOINT PIPE
- 45° 45° VERTICAL BENDS (PLAN)
- DIR DIRECTION OF FLOW
- NOTE: IN-LINE VALVE IS NOT INCLUDED IN THE COST OF BLOW-OFF
- (FOR FUTURE METER FOR LIFT STATION)

**SWING THE TABLE**  
(DISTANCE AND ELEVATION SHOWN IN FEET)

AS-BUILT NUMBER	DESCRIPTION	REFERENCE POINT	DISTANCE	REFERENCE POINT	DISTANCE	ELEVATION
29	8" WATER LINE	J	129.51	K	199.23	8.49 (-10.0)
29	8" GATE VALVE	J	110.00	K	179.33	10.09 (-10.0)
29	8" WATER LINE	J	36.36	K	99.42	9.33 (-10.0)
29	8" WATER LINE	J	77.86	K	10.42	9.18 (-10.0)
31	8" WATER LINE	J	174.67	K	101.59	9.96 (-10.0)
31	8" WATER LINE	L	48.87	M	156.88	9.72 (-10.0)
31	8" WATER LINE	L	86.63	M	24.61	10.18 (-10.0)
34	8" WATER LINE	M	157.92	M	43.35	10.26 (-10.0)
34	8" WATER LINE	M	142.19	M	24.61	8.49 (-10.0)
47	8" 4" TEE	L	103.85	M	16.27	10.20 (-10.0)
48	8" 4" TEE	M	108.17	M	11.10	10.21 (-10.0)
49	8" GATE VALVE	L	104.48	M	20.66	9.33 (-10.0)
50	8" GATE VALVE	M	116.84	M	11.95	9.66 (-10.0)
51	8" 2" REDUCER	L	116.80	M	50.43	9.08 (-10.0)
52	8" 4" TEE	M	116.84	M	41.93	7.40 (-10.0)
53	8" 4" TEE	M	125.14	N	11.20	9.52 (-10.0)
54	8" 4" TEE	M	125.30	N	9.70	8.90 (-10.0)
55	8" 4" TEE	M	135.27	N	29.94	N/A
56	8" 4" TEE	M	115.50	N	34.45	8.00 (-10.0)
59	8" GATE VALVE	L	116.43	M	41.97	9.10 (-10.0)
60	8" GATE VALVE	L	116.50	M	38.11	9.08 (-10.0)
61	8" 8" 90° BEND (TYP.)	L	121.84	M	38.04	7.78 (-10.0)
62	FIRE HYDRANT	M	130.22	M	37.78	12.40 (-10.0)



CURRY LANE

HORIZ: 1"=40'  
VERT: 1"=4'

LS-01 - MH-02

HORIZ: 1"=40'  
VERT: 1"=4'

**Kimley-Horn**  
6300 BOULEVARD AND ASSOCIATES, INC.  
1777 GARDEN STREET, SUITE 200, SARASOTA, FL 34236  
PHONE: 941-579-7600  
WWW.KIMLEY-HORN.COM REGISTRY NO. 698

**FLORIDA ENGINEERING & SURVEYING, LLC**  
CA #30375 LB #8024  
631 N. TAMiami TRAIL  
NOKOMIS, FLORIDA 34475  
TEL: (941) 485-8100  
FAX: (941) 485-8107  
www.flengineeringandsurveying.com  
© COPYRIGHTED MATERIAL 2022

**CURRY LANE IMPROVEMENTS FOR CAH DEVELOPMENTS, LLC**  
CITY OF VENICE

**PLAN AND PROFILE**

**SHEET NUMBER C-04**

DATE: \_\_\_\_\_  
SCALE AS SHOWN: \_\_\_\_\_  
DESIGNED BY: RYAN H. HOFFE, P.E.  
DRAWN BY: DANA K. HAYES  
CHECKED BY: KYLE B. HAYES  
DATE: \_\_\_\_\_

DATE: \_\_\_\_\_  
REVISIONS: \_\_\_\_\_  
DATE: \_\_\_\_\_













**STANDARD ORIENTATION**

**OPTIONAL ORIENTATIONS:**

- 1.) ALL BACKFLOW PREVENTION ASSEMBLIES SHALL BE APPROVED BY THE UNIVERSITY OF SOUTHERN CALIFORNIA FOUNDATION FOR CROSS-CONNECTION CONTROL AND HYDRAULIC RESEARCH AND/OR 1047 OR 1048 ASSE AS APPLICABLE
- 2.) 40° FITTINGS MAY BE SUBSTITUTED FOR 90° FITTINGS.
- 3.) PIPE BETWEEN TAP A ISOLATION VALVE SHALL BE 3000 PVC OR HDPE.
- 4.) IF TIEING OFF FOR POTABLE SERVICE, INSTALL INDICATOR VALVE BETWEEN TEE FOR POTABLE SERVICE AND FIRE SERVICE BACKFLOW ASSEMBLY.
- 5.) ASSEMBLY SHALL BE PAINTED RED WITH ALKYL ENAMEL, EPOXY OR POLYURETHANE BASED PAINT, EXCEPT FOR STAINLESS STEEL PARTS.
- 6.) VALVE ASSEMBLIES SHALL MEET NFPA 24 REQUIREMENTS AND INDICATOR VALVES SHALL BE PROVIDED.
- 7.) FOR CLEARANCE ISSUES, PLEASE REFER TO THE CURRENT FLORIDA FIRE PREVENTION CODE REQUIREMENTS.
- 8.) FOR FIRE PROTECTION SYSTEMS EQUIPPED WITH A FIRE PUMP, THE PIPE BETWEEN THE CHECK VALVE AND THE OUTSIDE CONNECTION SHALL BE EQUIPPED WITH AN APPROVED BALL BEARING.
- 9.) BACKFLOW PREVENTION ASSEMBLY TYPE SHALL BE DETERMINED BY THE CITY OF VENICE UTILITIES DEPARTMENTS MOST CURRENT CROSS-CONNECTION CONTROL PROGRAM.
- 10.) 2" STOKZ INLET CONNECTION MAY BE REDUCED FOR PIPE SIZES LESS THAN 2".

**FIRE SERVICE BACKFLOW ASSEMBLY**  
 SIZE 2" - 10" N.T.S.

	<b>CITY OF VENICE</b> ENGINEERING DEPARTMENT 401 WEST VENICE AVE. VENICE, FL 34085 (941) 486-2626 FAX (941) 480-3031	<b>UTILITIES - WATER</b> <b>FIRE SERVICE BACKFLOW ASSEMBLY</b>	DATE JAN 2021	SHEET NO. <b>W-9</b>
--	---	---	------------------	-------------------------

- 1.) INDICATOR POST REQUIRED WHEN FIRE SERVICE POINT OF CONNECTION IS ON A POTABLE WATER SERVICE.
- 2.) INSTALL INDICATOR POST AND VALVE BETWEEN TEE FOR POTABLE WATER SERVICE AND FIRE SERVICE BACKFLOW ASSEMBLY.
- 3.) AMERICAN FLOW CONTROL 40-71 INDICATOR POST OR EQUIVALENT SHALL BE INSTALLED.
- 4.) UNDERWRITERS LABORATORIES LISTED AND FACTORY MUTUAL RESEARCH APPROVED.
- 5.) FOR USE WITH VALVES WITH O-RING STEM SEALS.
- 6.) ALL EXPOSED EXTERIOR SURFACES COATED WITH TRENAC 140 EPOXY AND TOP COATED WITH "RED" ENAMEL. PER MANUFACTURER'S STANDARD PAINT.

**FIRE SERVICE VALVE INDICATOR POST**  
 N.T.S.

	<b>CITY OF VENICE</b> ENGINEERING DEPARTMENT 401 WEST VENICE AVE. VENICE, FL 34085 (941) 486-2626 FAX (941) 480-3031	<b>UTILITIES - WATER</b> <b>FIRE SERVICE INDICATOR POST</b>	DATE JAN 2021	SHEET NO. <b>W-10</b>
--	---	--	------------------	--------------------------

**PLUG VALVE DETAIL**  
 (SEWER FORCE MAINS ONLY)  
 N.T.S.

- 1.) PLUG VALVES SHALL BE MANUFACTURED BY DEZURK.
- 2.) SEAT OF PLUG VALVE SHALL BE ON THE UPSTREAM SIDE OF THE BODY.
- 3.) VALVE SHALL BE INSTALLED IN CONFORMANCE WITH MANUFACTURER'S RECOMMENDATIONS.
- 4.) ALL SEWER FORCE MAIN PLUG VALVES SHALL BE KEAR OPERATED.

**TYPICAL COVER**

**LOW PROFILE COVER**

- 1.) MATERIAL: ASTM-A88 CLASS 308 GRAY IRON (USE 300-CE-CRS)
- 2.) RING WT: 195 LBS. APP.
- 3.) COVER WT: 150 LBS. APP.
- 4.) INFLOR CUSH REQUIRED

- 1.) MATERIAL: ASTM-A88 CLASS 308 GRAY IRON (USE 300-CE-CRS)
- 2.) RING WT: 195 LBS. APP.
- 3.) COVER WT: 150 LBS. APP.
- 4.) INFLOR CUSH REQUIRED

**MANHOLE COVERS DETAIL**  
 (ALL UNITS IN INCHES)  
 N.T.S.

- 1.) PLUG VALVES SHALL BE MANUFACTURED BY DEZURK.
- 2.) SEAT OF PLUG VALVE SHALL BE ON THE UPSTREAM SIDE OF THE BODY.
- 3.) VALVE SHALL BE INSTALLED IN CONFORMANCE WITH MANUFACTURER'S RECOMMENDATIONS.
- 4.) ALL SEWER FORCE MAIN PLUG VALVES SHALL BE KEAR OPERATED.

- 1.) HEAVY DUTY 150 LB. COVER
- 2.) MANHOLE COVER SHALL BE 15 FOUNDATION TYPE CE-CRS
- 3.) SHALL BE LABELLED AS ILLUSTRATED ABOVE

- 1.) HEAVY DUTY 150 LB. COVER
- 2.) MANHOLE COVER SHALL BE 15 FOUNDATION TYPE CE-CRS
- 3.) SHALL BE LABELLED AS ILLUSTRATED ABOVE

**PLUG VALVE & MANHOLE COVERS**  
 SHEET NO. **S-1**

	<b>CITY OF VENICE</b> ENGINEERING DEPARTMENT 401 WEST VENICE AVE. VENICE, FL 34085 (941) 486-2626 FAX (941) 480-3031	<b>UTILITIES - SEWER</b> <b>PLUG VALVE &amp; MANHOLE COVERS</b>	DATE JAN 2021	SHEET NO. <b>S-1</b>
--	---	--	------------------	-------------------------

**SANITARY SEWER MANHOLE DETAIL**  
 N.T.S.

NOTES:

- 1.) MANHOLE SHALL CONFORM TO A.S.T.M. C-478 LATEST REVISION TYPE B CONCRETE. 4000 P.S.I. 3 DAY COMPRESSIVE STRENGTH.
- 2.) INTERIOR AND EXTERIOR OF MANHOLE SHALL BE PAINTED WITH AGRISURE 5000 EPOXY. FOR EXISTING MANHOLES RECEIVING FORCE MAINS, LINE WITH RAVENCOAT 400 EPOXY.
- 3.) EXISTING "C" CONCRETE MANHOLES SHALL BE USED WHENEVER POSSIBLE. WHERE STRUCTURAL CONCERN EXISTS, A CONCRETE CURE MAY BE USED IN LIEU OF STRUCTURING COAT.
- 4.) FOR MANHOLES LESS THAN 5 FEET IN DEPTH, A SHALLOW MANHOLE DETAIL, THIS SHEET SHALL BE USED.
- 5.) MONOTHIC DUCTILE IRON ADJUSTMENT FRINGS MAY ONLY BE USED FOR SURFACE DRAINAGE PROJECTS, NOT FOR NEW CONSTRUCTION.
- 6.) INFLORCUSH SHALL BE PROVIDED AND INSTALLED BY CONTRACTOR.

**SANITARY SEWER MANHOLE**  
 SHEET NO. **S-2**

	<b>CITY OF VENICE</b> ENGINEERING DEPARTMENT 401 WEST VENICE AVE. VENICE, FL 34085 (941) 486-2626 FAX (941) 480-3031	<b>UTILITIES - SEWER</b> <b>SANITARY SEWER MANHOLE</b>	DATE JAN 2021	SHEET NO. <b>S-2</b>
--	---	---	------------------	-------------------------

**SHALLOW MANHOLE PROFILE**

**ACCESS COVER PROFILE**

**COVER PROFILE**

**RING PROFILE**

**PLAN**

- 1.) SHALLOW MANHOLES SHALL BE DETAILLED WHEREVER THE BASE OF THE MANHOLE IS LESS THAN 5 FEET BELOW THE FINISHED GRADE.
- 2.) MANHOLE SHALL CONFORM TO A.S.T.M. C-478 LATEST REVISION TYPE B CONCRETE. 4000 P.S.I. 3 DAY COMPRESSIVE STRENGTH.
- 3.) INTERCEPTOR MANHOLES, DROP MANHOLES, AND MANHOLES WITH INTERCEPTOR SERVICE MAINS SHALL BE USED.
- 4.) ALL JOINTS SHALL BE WRAPPED WITH RUBBER NEK SEALER.
- 5.) INFLOR CUSH SHALL BE PROVIDED AND INSTALLED BY CONTRACTOR.
- 6.) COVER SPECIFICATIONS:  
 24" DIA. 3000 PSI AT 28 DAYS CONCRETE WITH FIBER REINFORCEMENT PAD 4" THICK  
 EXTENSION AS REQUIRED  
 COMPAS TRACING WIRE  
 2" SCHED. PVC  
 40" STREET WYE ELBOW

**PRECAST SHALLOW MANHOLE DETAIL**  
 N.T.S.

	<b>CITY OF VENICE</b> ENGINEERING DEPARTMENT 401 WEST VENICE AVE. VENICE, FL 34085 (941) 486-2626 FAX (941) 480-3031	<b>UTILITIES - SEWER</b> <b>PRECAST SHALLOW MANHOLE</b>	DATE JAN 2021	SHEET NO. <b>S-3</b>
--	---	--	------------------	-------------------------

**CLEANOUT PLAN**

**CLEANOUT PROFILE**

**SANITARY SEWER SERVICE & CLEANOUT DETAIL**  
 N.T.S.

- 1.) ALL SERVICE LATERAL JOINTS SHALL BE GASKETED FROM MAIN WYE.
- 2.) ALL LATERAL SERVICES SHALL BE A MINIMUM OF SIX INCHES IN DIAMETER.
- 3.) A TWO-WAY CLEANOUT SHALL BE PROVIDED AT THE POINT OF TAP ON THE PROPERTY LINE.
- 4.) A DOUBLE DEEP CLEANOUT SHALL BE PROVIDED ON THE PRIVATE SIDE.
- 5.) A DOUBLE DEEP CLEANOUT SHALL BE PROVIDED ON THE PUBLIC SIDE IF EQUAL SHALL BE USED IT SHALL BE COLOR CODED TO GREEN FOR SEWER.
- 6.) AIR TEST REQUIRED.
- 7.) THE BUILDING GENERAL CONTRACTOR SHALL INSURE THE APPLICABLE DRAINING SANITARY SEWER CONNECTION IS PLACED AT FINISH GRADE WITH COVER, AIR TEST REQUIRED AND THE TIME CERTIFICATION OF OCCUPATION (COB) IS REQUESTED. NO CONFORMANCE WAY RESULT IN A DELAY OF PAY.
- 8.) CONCRETE TRACING WIRE SHALL BE EQUAL SHALL BE USED IT SHALL BE COLOR CODED TO GREEN FOR SEWER.
- 9.) WHEN CONNECTING TO EXISTING SERVICE TAPS ON VCP, REMOVE EXISTING VCP WYE AND REPLACE WITH EDGE GASKETED FITTING. USE MANADAPTOR TO TRANSITION FROM VCP TO TEE.

**SEWER SERVICE & CLEANOUT**  
 SHEET NO. **S-4**

	<b>CITY OF VENICE</b> ENGINEERING DEPARTMENT 401 WEST VENICE AVE. VENICE, FL 34085 (941) 486-2626 FAX (941) 480-3031	<b>UTILITIES - SEWER</b> <b>SEWER SERVICE &amp; CLEANOUT</b>	DATE JAN 2021	SHEET NO. <b>S-4</b>
--	---	---	------------------	-------------------------

**SANITARY SEWER DROP MANHOLE PROFILE**

**SANITARY SEWER DROP MANHOLE**  
 N.T.S.

- 1.) MANHOLE SHALL CONFORM TO A.S.T.M. C-478 LATEST REVISION TYPE B CONCRETE. 4000 P.S.I. 3 DAY COMPRESSIVE STRENGTH.
- 2.) THE NEW CONSTRUCTION OF INTERCEPTOR MANHOLES, DROP MANHOLES, AND MANHOLES INTERCEPTOR FORCE MAINS SHALL BE PAINTED WITH AGRISURE 5000 EPOXY. EXISTING MANHOLES SHALL BE PAINTED WITH AGRISURE 5000 EPOXY. WHEN CONNECTING TO EXISTING MANHOLES USE 200 MESH RAVENCOAT OR EPSON WALL SPRAY APPLIED LINER.
- 3.) DROP MANHOLES SHALL NOT BE USED WITHOUT WRITTEN PERMISSION FROM THE UTILITY DEPARTMENT.

**SANITARY SEWER DROP MANHOLE**  
 SHEET NO. **S-5**

	<b>CITY OF VENICE</b> ENGINEERING DEPARTMENT 401 WEST VENICE AVE. VENICE, FL 34085 (941) 486-2626 FAX (941) 480-3031	<b>UTILITIES - SEWER</b> <b>SANITARY SEWER DROP MANHOLE</b>	DATE JAN 2021	SHEET NO. <b>S-5</b>
--	---	--	------------------	-------------------------

ALL RECORD DRAWINGS SHALL BE APPROVED BY THE CITY OF VENICE UTILITIES DEPARTMENT. THE CITY OF VENICE UTILITIES DEPARTMENT IS NOT RESPONSIBLE FOR THE ACCURACY OF THE INFORMATION PROVIDED HEREON. THE USER SHALL BE RESPONSIBLE FOR VERIFYING THE ACCURACY OF THE INFORMATION PROVIDED HEREON.

 1777 MAIN STREET, SUITE 200, SARASOTA, FL 34236 WWW.KIMLEY-HORN.COM TELEPHONE NO. 688	LICENSE PROFESSIONAL RYAN R. HOPPE, P.E. FL LICENSE NUMBER 79400 CHECKED BY KICK
	CITY OF VENICE IMPROVEMENTS PREPARED FOR CAH DEVELOPMENTS, LLC CITY OF VENICE