

Venice Mobility Study

City Council Meeting

Kathleen Weeden, PE, City Engineer

Christopher Hatton, PE, Kimley-Horn and Associates

Erin Gentle, GISP, Kimley-Horn and Associates

City of Venice City Hall

August 13, 2013



Kimley-Horn
and Associates, Inc.

Overview

- Project Status update
- Recommended action from the Council:
 - 1) Reverse angled parking test site
 - 2) Proceed with wayfinding concept for Phase I to start the bid process

Project Status Update



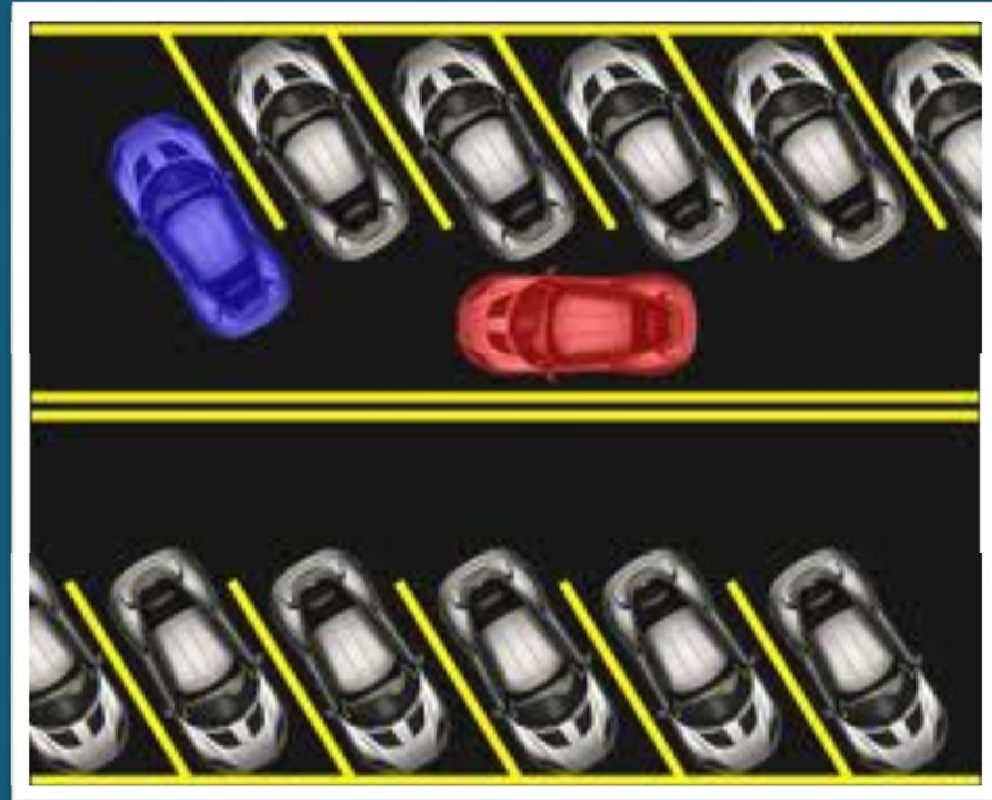
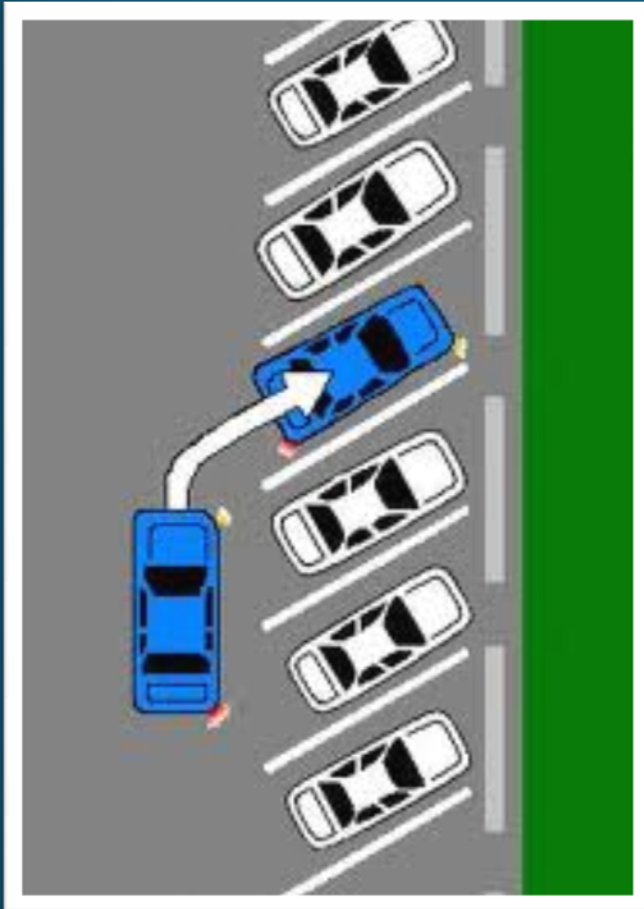
Project Schedule

		2013											2014		
		Feb	Mar	Apr	May	Jun	Jul	Aug	Sep	Oct	Nov	Dec	Jan	Feb	Mar
Task 1	Project Work Plan and Schedule														
Task 2	Project Kickoff Meeting														
Task 3	GIS Data Consolidation														
Task 4	Pedestrian Evaluation & Walkability Audit														
Task 5	Parking Evaluation														
Task 6	Develop Wayfinding Plan														
Task 7	TCEA/TCMA Feasibility														
Task 8	Transportation Needs														
Task 9	Public Workshop														
Task 10	Design Considerations and Cost														
Task 11	Develop Preliminary Draft Plan/Implementation Plan														
Task 12	Workshop/Presentation														
Task 13	Final Report														
Task 14	Project Newsletter (Executive Summary to Public)														

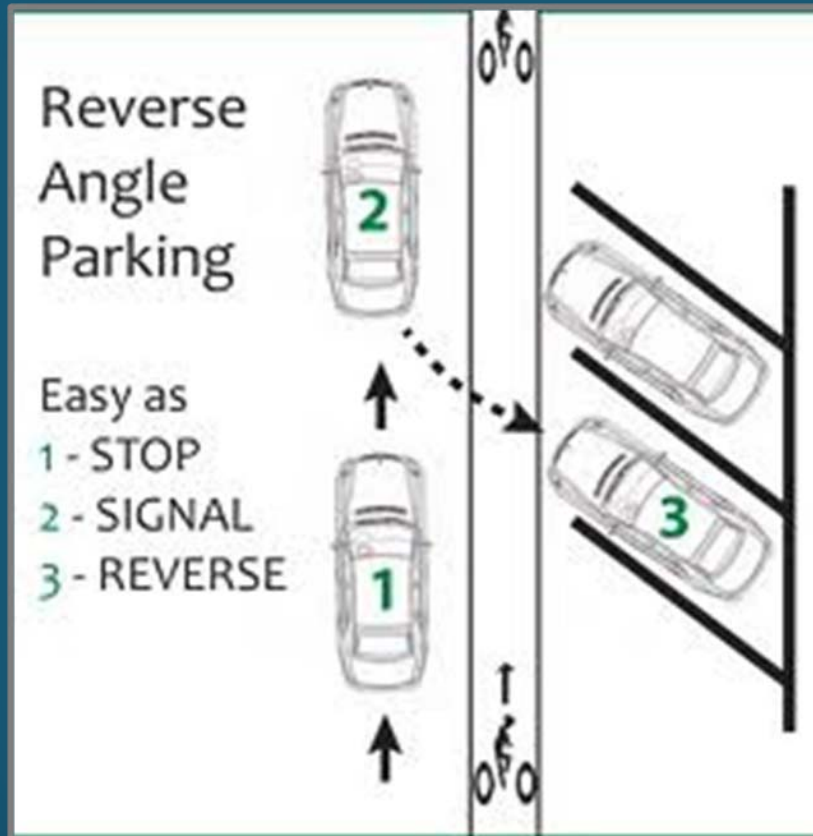
Reverse Angled Parking Test Site



Pull Forward/Head-in Angled Parking



Reverse Angled/Back-in parking



Identified Benefits

- Improved Driver Visibility
- Easier Loading/Unloading
- Accessible Parking and Curb Ramps
- Traffic Calming

Test Site – Existing Conditions



Test Site – Proposed Restripe



Wayfinding – Phase I Bid Phase



Wayfinding

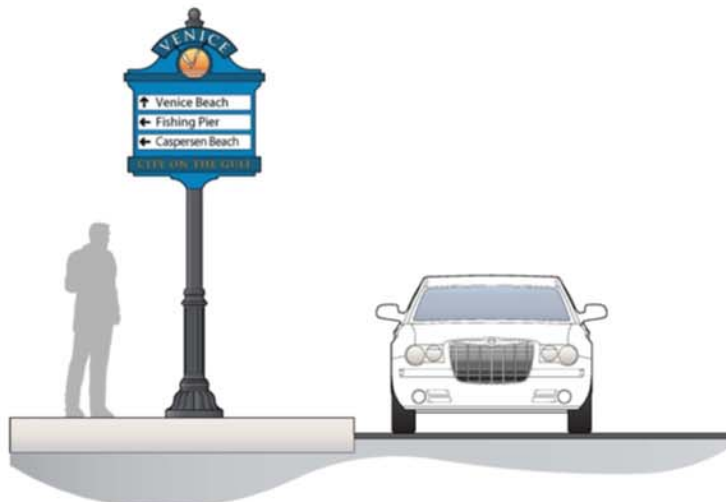
Designed to aid visitors and residents in navigating around the City

- Inventory existing signage
- Develop unified concept design
- Identified potential sign locations
- Calculate cost to develop phasing plan
- **Create bid package**





PARKING DIRECTIONAL SIGNAGE



VEHICULAR-ORIENTED
DIRECTIONAL SIGNAGE



POST-MOUNTED BANNERS
(EXISTING)



PEDESTRIAN-ORIENTED
DIRECTIONAL SIGNAGE

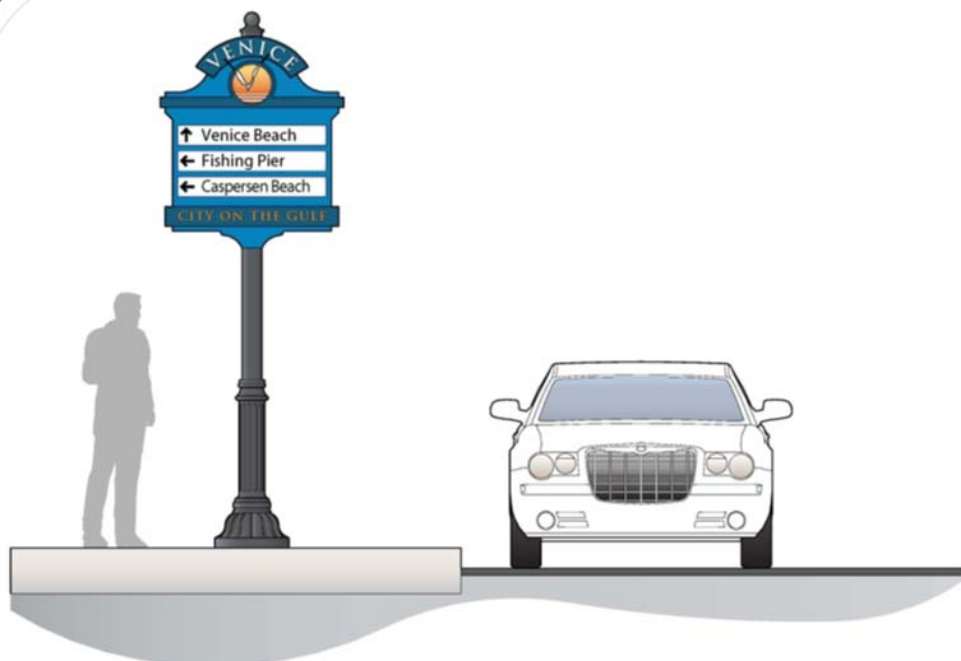


DIRECTORY MAP KIOSK



TRAIL SIGNAGE

Wayfinding - Vehicular



VEHICULAR-ORIENTED
DIRECTIONAL SIGNAGE



PARKING DIRECTIONAL SIGNAGE

Wayfinding - Recreational



TRAIL SIGNAGE

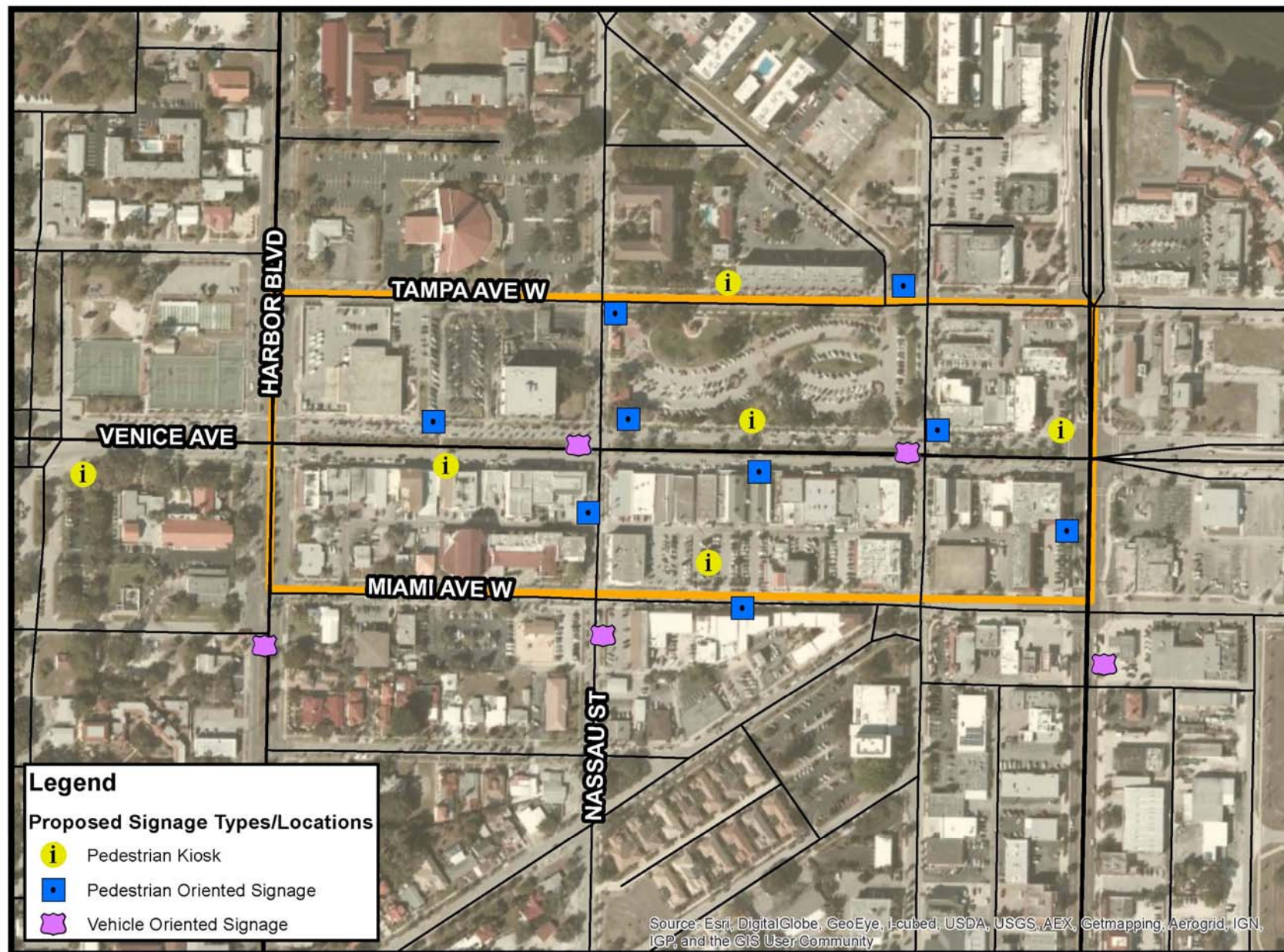


DIRECTORY MAP KIOSK

Wayfinding - Pedestrian







Proposed Phase I Sign Types

Sign Type	Proposed Number of Each
Vehicle Oriented	10
Pedestrian Mounted	9
Pedestrian Kiosk	6
Total Signs in Phase I	25

Request of Council Action:

- Motion to approve the restriping of Venice Avenue between Harbor Blvd and Avenue de Parques (in front of City Hall), reducing Venice Ave from 2-lanes to 1-lane in the eastbound direction and restriping the parallel parking spaces to a reversed angled parking configuration.
- Motion to approve moving forward with the request for bids using the proposed wayfinding concepts presented for Phase 1 along with the proposed sign locations.

Questions

