



Sea Turtles and Venice

Venice City Council Meeting

Melissa Bernhard, Kathy Klingensmith, and
Kevin Claridge,

Mote Marine Laboratory

Sea Turtle Conservation and Research Program



MOTE.ORG

Sea Turtle Conservation & Research Program (STCRP)

- Formed in 1982
- Conducts sea turtle nesting surveys on 35 miles of beach
- Document and protect sea turtle nests and hatchlings from human impacts and interactions
- All sea turtle species are listed as endangered or threatened species



STCRP Funding Sources



- Mote: Aquarium funded by admission, Research operates on grants/contracts
- STCRP:
 - Nourishment – endangered species monitoring for beach nourishment projects
 - Beach cleaning – to ensure nests protected from mechanical raking
 - Non-nourishment
 - Fill in the gaps between nourishment cycles
 - Partnerships with local municipalities



What is a Sea Turtle Nesting Survey?



- Counting and marking sea turtle nests throughout the nesting season
 - April 15-October 31
 - Conducted daily at dawn
- Data used to assess the local population of nesting sea turtles
- Mote is the only entity permitted by FWC for Venice nesting surveys



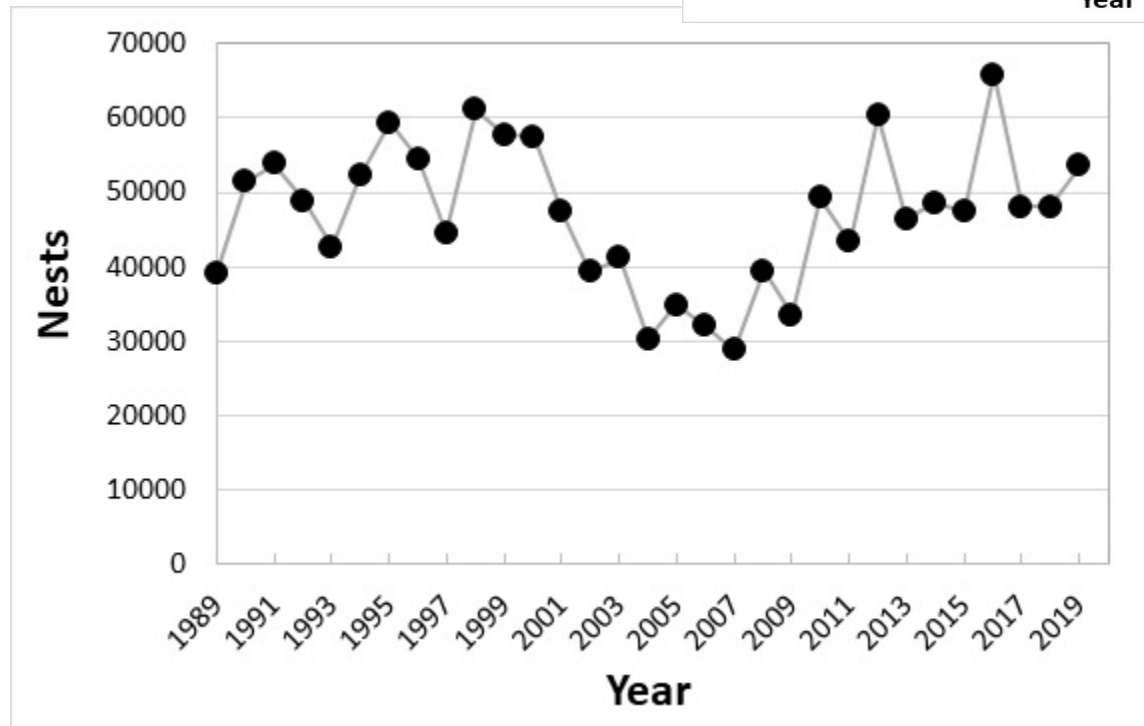
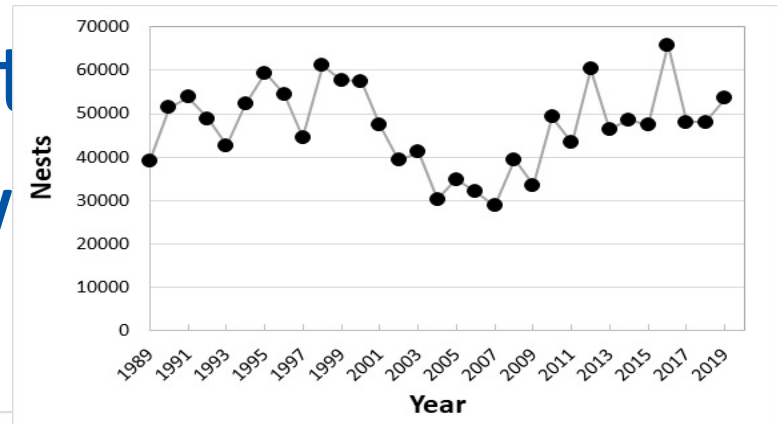
Services from Sea Turtle Nesting Surveys

- Staked nests allow equipment and vehicles to access the beach
 - Heavy machinery used for cleaning outfalls
 - Dead fish removal
 - Event setup
- Clean up after predators
- Education to residents and tourists
- Protection of a quintessential Venice beach symbol

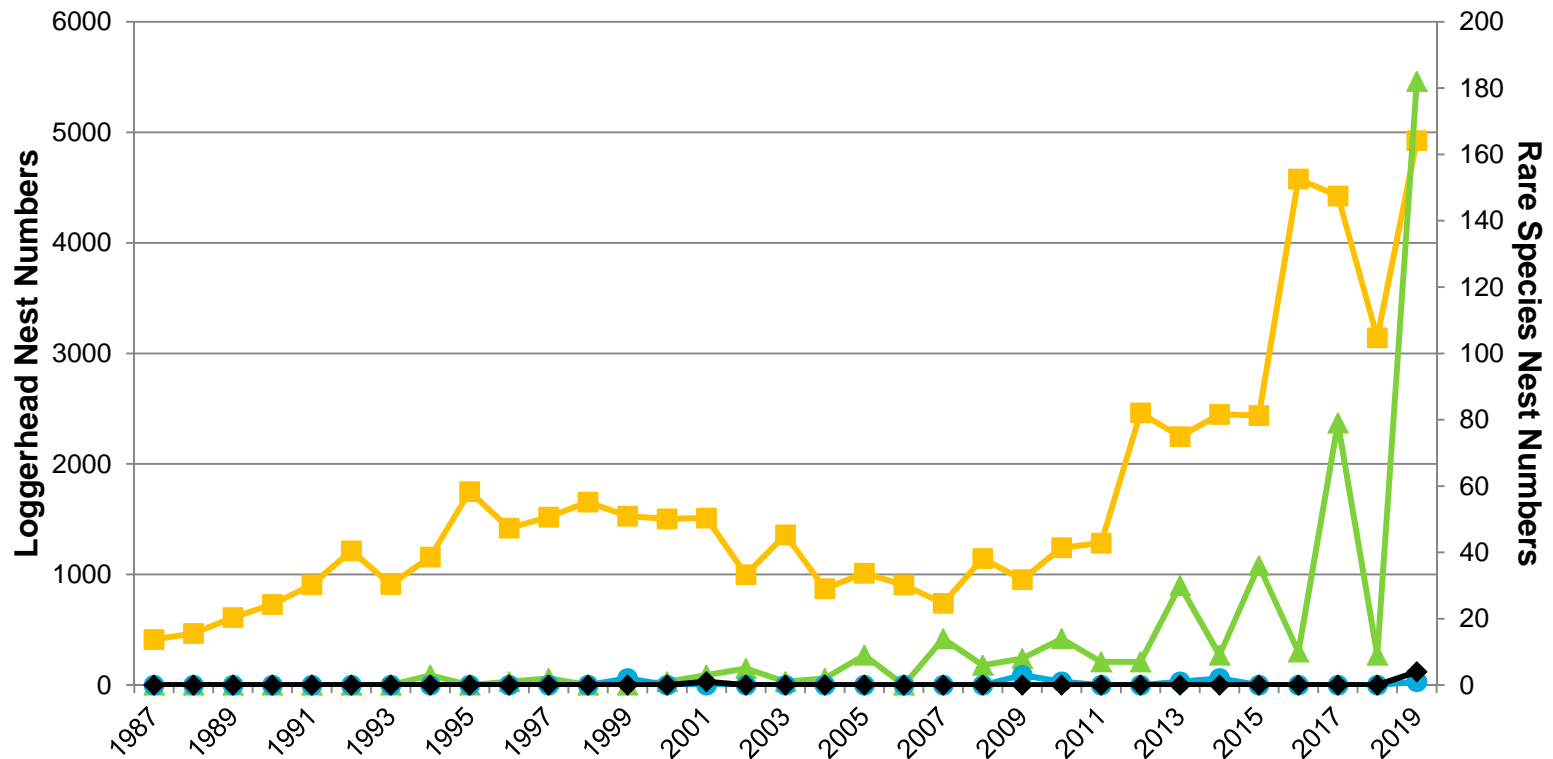
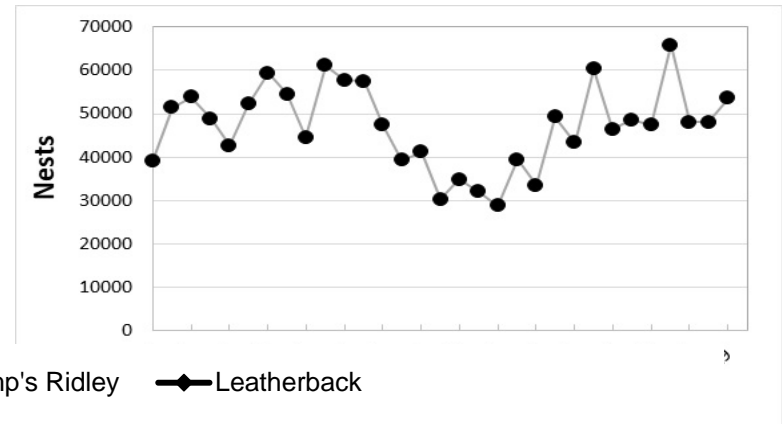


Sea Turtle Nest Numbers

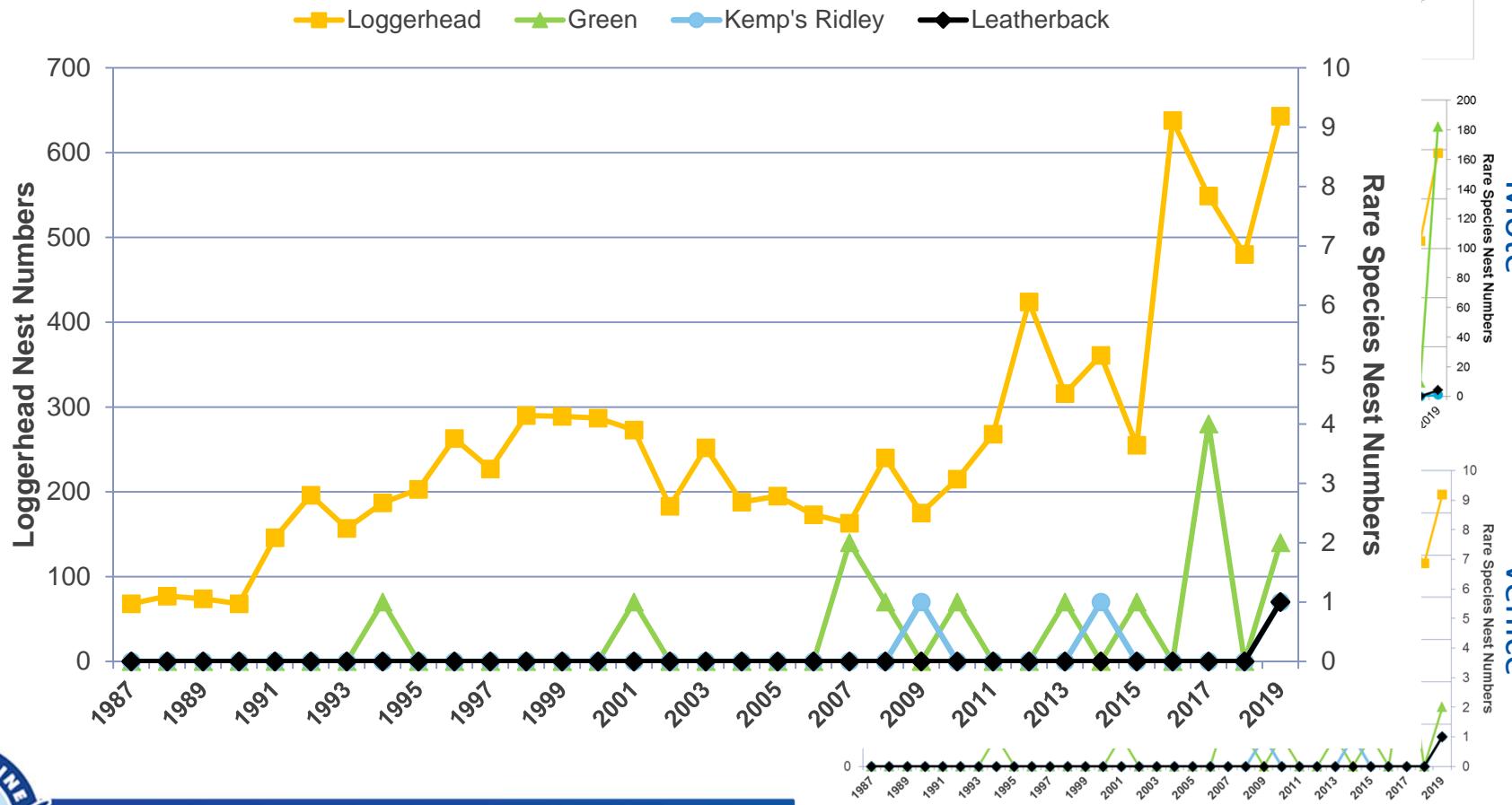
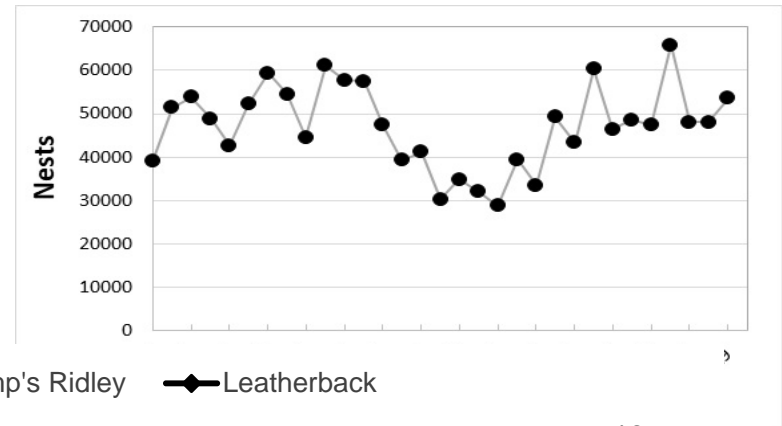
State-wide



Sea Turtle Nest Numbers Mote Beaches



Sea Turtle Nest Numbers Venice



Sea Turtle Nest Numbers

- Exponential increase in last decade

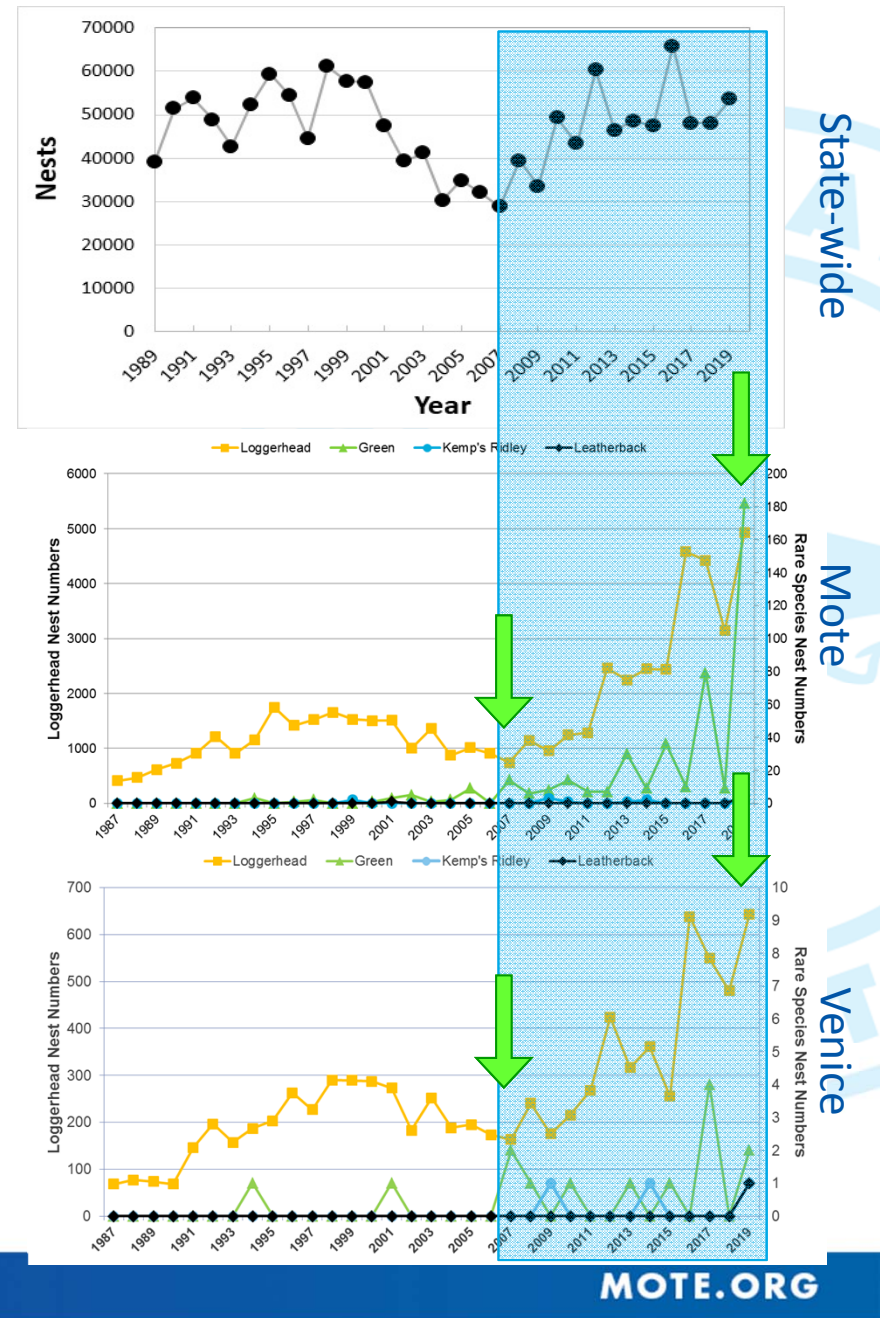
- 2007: 754 nests 163 nests
- 2019: 5,112 nests 643 nests



578%



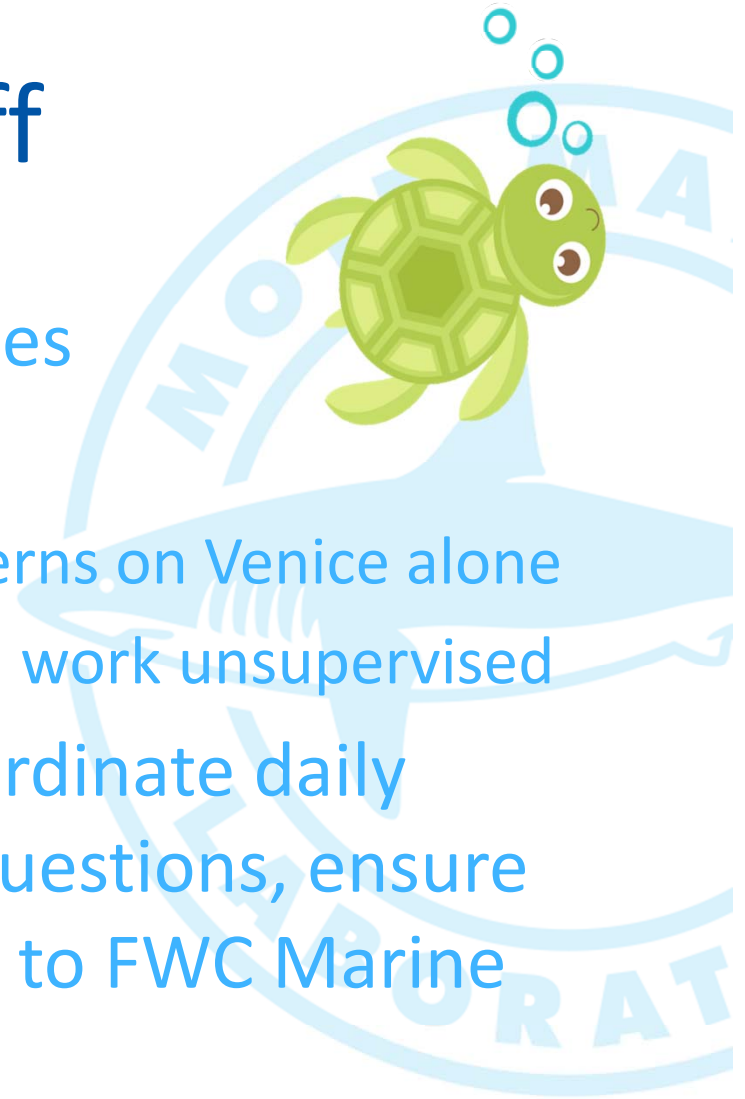
294%



MOTE.ORG

STCRP Staff

- 4 full-time staff cover all 35 miles
- Extensive use of free labor
 - ~50 volunteers and 3 college interns on Venice alone
 - Unwilling/unable to complete all work unsupervised
- Staff must: schedule, train, coordinate daily assignments, be available for questions, ensure data quality, ensure adherence to FWC Marine Turtle Permit Protocols



Non-Staff Expenses

- Very small portion of overall costs
- Frugal with equipment
 - Reuse stakes year after year (even as they break); volunteer program at Grace Methodist Church dedicated to repainting stakes for reuse
 - Successfully keep ATVs functioning for 10 years, well beyond the general expected life for the conditions
 - Regularly applying for competitive grants





Partnership with City of Venice

- Continue strong partnership with City of Venice: 2020 request
- 2021-2024: Contract for covering sea turtle nesting survey costs in years between beach nourishment projects?
- Example: City of Sarasota (Lido Key) and Sarasota County (Siesta and Casey Keys)



2020 Partnership Cost



Real Cost

Task	Unit Cost	Unit	Cost
Mobilization	\$ 440.96	1	\$ 440.96
Meetings	\$ 250.00	0	\$ -
Reports	\$ 399.12	3	\$ 1,197.36
Supplies	\$ 3.50	647	\$ 2,264.60
Staffing	\$ 368.12	156	\$ 57,426.72
Mileage	\$ 60.38	182	\$ 10,988.25
Subtotal			\$ 72,317.89
Minus Sarasota County Beach Cleaning			\$ 22,320.00
TOTAL Cost			\$ 49,997.89

Partnership Reduced Cost

Task	Unit Cost	Unit	Cost
Mobilization	\$ 185.67	1	\$ 185.67
Meetings	\$ 250.00	0	\$ -
Reports	\$ 168.00	3	\$ 504.00
Supplies	\$ 3.50	647	\$ 2,264.60
Staffing	\$ 155.00	156	\$ 24,180.00
Mileage	\$ 60.38	182	\$ 10,988.25
Subtotal			\$ 38,122.52
Minus Sarasota County Beach Cleaning			\$ 22,320.00
TOTAL Cost			\$ 15,802.52



Thank You!



MOTE.ORG