

VENICE LIBRARY



Sarasota County

cph

SWEET

SPARKMAN

ARCHITECTS

COMMUNITY INVOLVEMENT

Total of 25 Meetings

- Six Community Meetings: 3/21/16, 5/3/16, and 5/12/16
- Thirteen Focus Group Sessions: 8/16/16 thru 8/19/16
- Meeting with Cultural Campus neighbors on 12/5/16
- Two Community Workshops on 12/8/16
- Meeting with residential neighbors on 2/26/17
- County presentation to City of Venice Council 3/14/17
- Presentation to City of Venice Council on 3/28/17
- Architectural Review Board hearing on 4/27/17

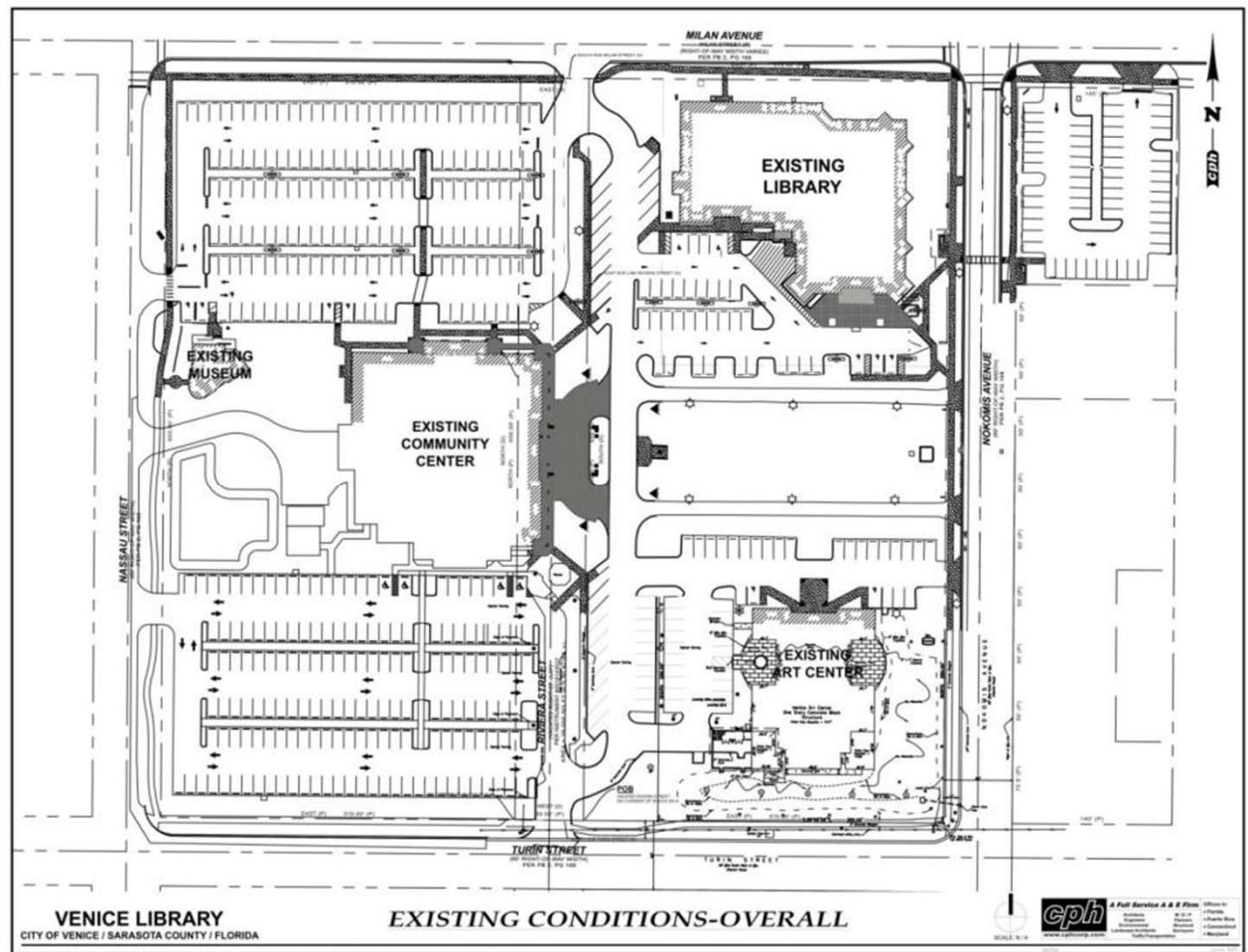
EXISTING CAMPUS PARKING

**Current site
contains:**

**441 Total Parking
Spaces
16 ADA Accessible
Spaces
15 Bike Racks**

**Remote Parking
Lot:**

59 Parking Spaces



PROPOSED CAMPUS PARKING

**441 Parking Spaces
proposed
441 spaces existing**

**16 ADA Accessible
Spaces proposed
16 spaces existing
9 required**

**35 Bike Racks
proposed
15 existing**

**Remote Parking Lot:
58 Spaces**



EXISTING VEHICLE ACCESS AND CIRCULATION



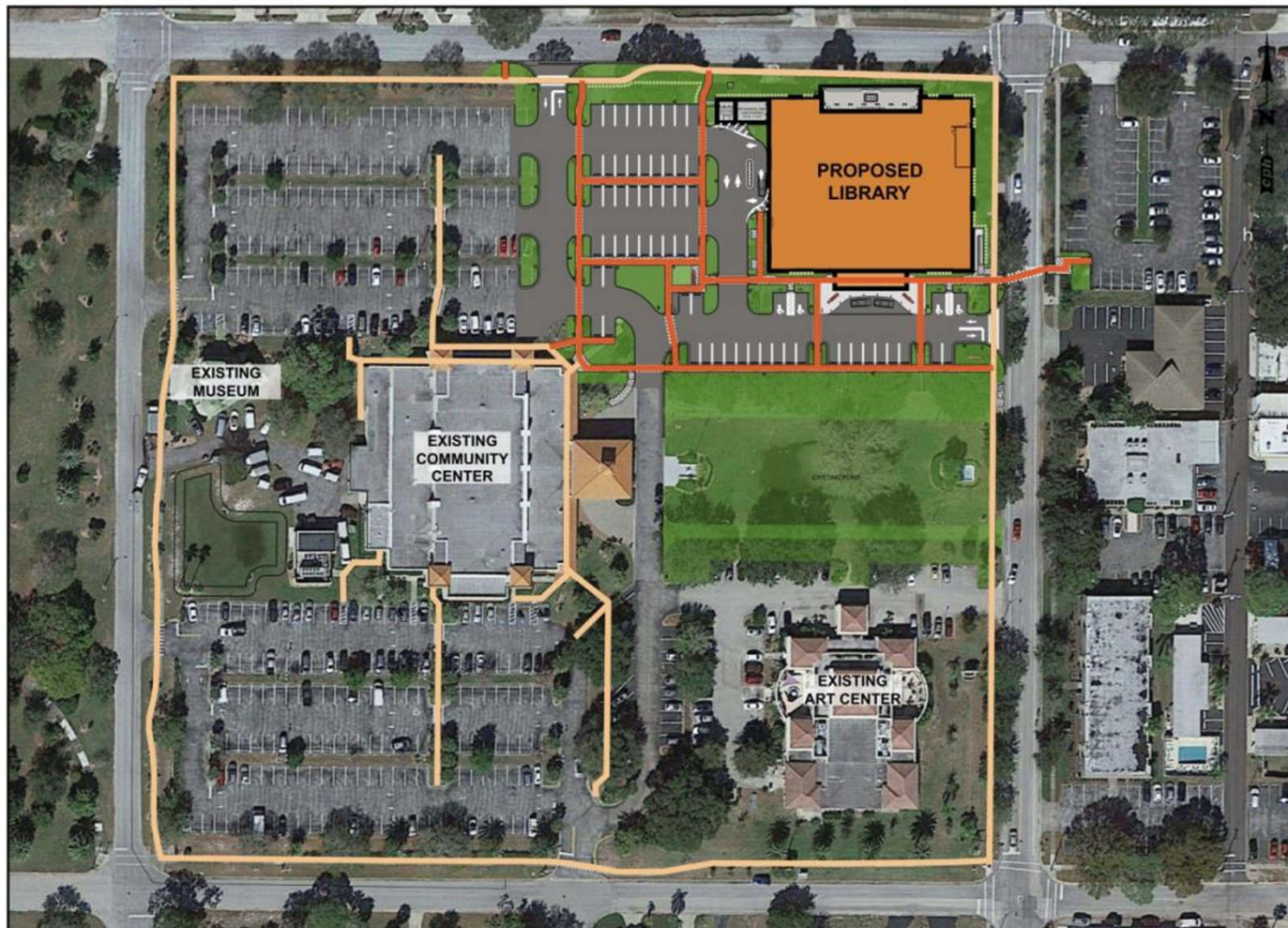
PROPOSED VEHICLE ACCESS AND CIRCULATION



EXISTING PEDESTRIAN CIRCULATION & CONNECTIVITY



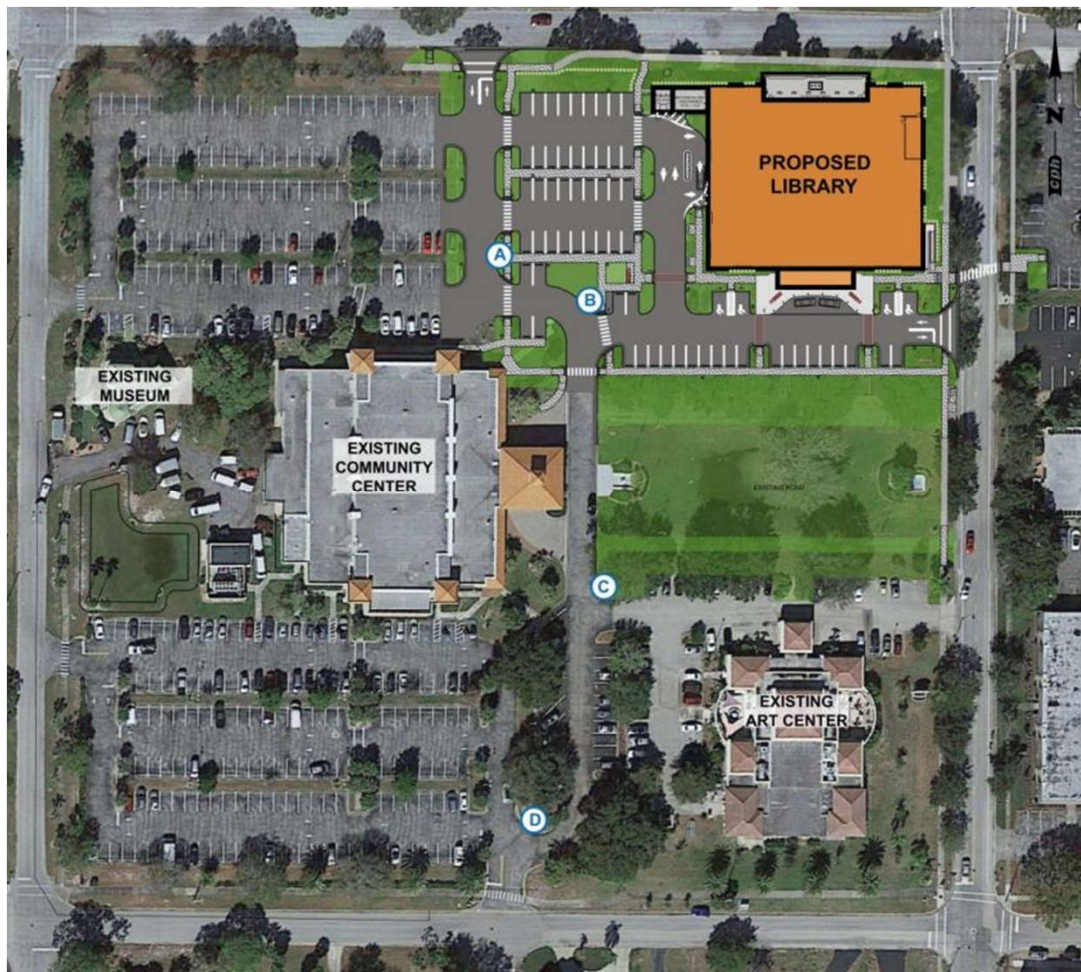
PROPOSED PEDESTRIAN CIRCULATION & CONNECTIVITY



EXISTING WAYFINDING SIGNAGE



PROPOSED WAYFINDING SIGNAGE



- A** SIGN TYPE D- Pedestrian Directional
- B** SIGN TYPE D- Pedestrian Directional
- C** SIGN TYPE D- Pedestrian Directional
- D** SIGN TYPE D- Pedestrian Directional

EXISTING SITE LIGHTING



PROPOSED SITE LIGHTING



PROPOSED SITE FEATURES

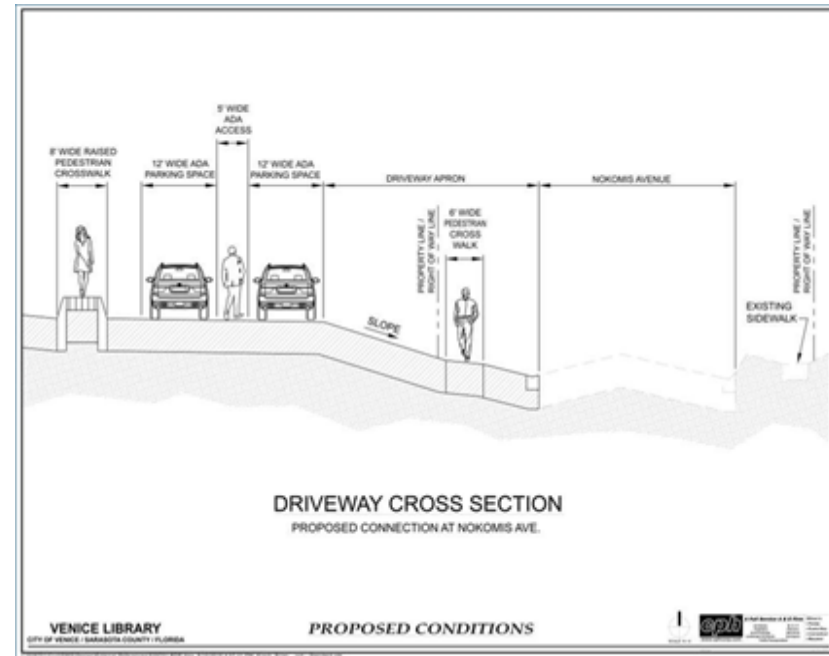


ADA ACCESSIBILITY

ADA Parking



Driveway Cross Section



LEED



PROPOSED BUILDING



INTERIOR



EXTERIOR PERSPECTIVE



GATHERING AREAS



View from Exterior Loggia



View from Outdoor Garden

FLOOR PLAN

