



# Fox Lea Farm

*From Grass Roots to Grand Prix...*

Fox Lea Farm is a  
**Nationally  
Recognized**  
Horse Show Facility

- Established in 1983
- Located in Venice, Florida
- Competitors from across the country and internationally
- Minutes from the best beaches in the country
- Hosts several types of horse shows each year





## Fox Lea Farm is a vital part of the Venice, Florida community

### **Safety is our Number One Priority:**

*Founded in 1983 by David and Linda Aldrich, Fox Lea Farm was designed and is maintained with the safety of both horse and rider as the number one priority.*

### **We Give Back to Our Community:**

*In 2016, the winter show circuit debuted along with "Show Jumping Under the Stars", an event that is designed to maximize enjoyment for both competitors and spectators alike, and build a charitable component that allows us to give back to the community.*

### **We Attract Competitors From Across the Continent:**

*Fox Lea Farm attracts competitors from across the US, Canada, and Latin America.*

### **We Have a Significant Impact on the Local Economy:**

*Competitors at Fox Lea Farm come specifically for the horse shows, stay for extended periods of time, and spend money on dining out, shopping, and on many other activities.*



**FOX LEA FARM**  
VENICE, FLORIDA

# Fox Lea Farm drives **Significant Economic Impact** to Sarasota County

Generates over 25,000  
room nights annually

Year-round and consistent impact:  
competitions are held throughout the year

One of the few privately-owned horse show  
facilities in the country



## Three elements MAKE or BREAK us:

- **FOOTING** in the competition arenas
- **ATMOSPHERE** must be horse- and family-friendly
- **SAFETY** of both horse and rider are our #1 priority



In Summary...



VOTE NO



Thank you!



Kim Aldrich-Farrell  
(941) 809-6365  
foxleafarm@aol.com



Laurie Birnbach  
(941) 320-2018  
foxleapr@aol.com



Fox Lea Farm, Inc.  
PO Box 400  
Venice, FL 34284  
941-809-6365  
www.foxleafarm.com



## Appendix



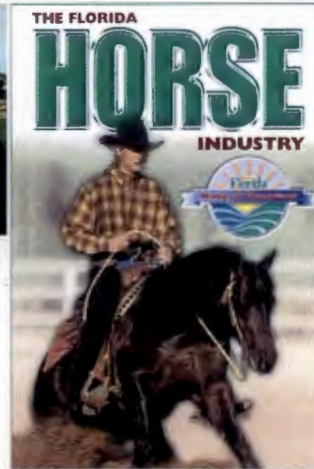


# The Equestrian Industry in the USA and Florida



*"The U.S. Horse Industry is a very large and important part of our national, state, and local economies. It is diverse, involving agriculture, business, sport, gaming, entertainment and recreation."*

*- American Horse Council*



## *In the State of Florida:*

- **\$6.5 billion** economic impact annually
- **\$2.2 billion** worth of goods and services purchased each year
- **244,200** Floridians involved in the industry
- **72,000** jobs created by the industry
- **500,000** horses in the state of Florida, 60% of which are involved in showing or recreation

## *In the United States:*

- **14.6 million** people over the age of 12 ride a horse in the U.S. on a regular basis
- **9.2 million** horses owned in the United States
- **88 million** attend sanctioned horse-related events each year in the U.S.
- **\$102 Billion** Economic Impact on the U.S. economy annually

*- American Horse Council*



## *USEF Members...*

- Have a median income of **\$185,000**
- 40% report income in excess of **\$350,000**
- Spend an average of **30 nights** per year in hotel rooms
- Travel by air **at least 16 times** per year
- **22% Own two or more homes**
- Have **ample disposable income** and the **time to use it** in pursuit of their passions

*- Source: USEF*

*The United States Equestrian Federation (USEF) which is the governing body of most sanctioned horse shows has over 81,000 members. These members own 300,000 horses, compete among 29 breeds and disciplines and spend \$1.4 Billion annually on horse related products*



## *USEF Members...*

- Have a median **income of \$185,000**
- 40% report income in excess of **\$350,000**
- Spend an average of **30 nights** per year in hotel rooms
- Travel by air at **least 16 times** per year
- **22% Own two or more homes**
- Have **ample disposable income** and the **time to use it** in pursuit of their passions

- Source: USEF

*The United States Equestrian Federation (USEF) which is the governing body of most sanctioned horse shows has over 81,000 members. These members own 300,000 horses, compete among 29 breeds and disciplines and spend \$1.4 Billion annually on horse related products*

*Valerie Miller 2010*

Total annual economic impact is

## Significant

- *Fox Lea Farm hosts 40+ competitions annually*
- *In 2015 this resulted in over \$15MM of direct spending, and an additional \$80MM that was ultimately contributed to the local economy by competitors and spectators at Fox Lea Farm events*
- *All horse show dates are proprietary to Fox Lea Farm, and will continue each year in perpetuity*

*A total of just under \$100MM of annual economic impact is being driven by events at Fox Lea Farm*  
**Each Year**

Fox Lea Farm December 2015 - 2016 Schedule

DATE	EVENT NAME
December 12	Open Series End-of-Year Awards Banquet
December 12-13	December Open Show
January 6-16	2016 Quarter Horse Winter Circuit / NSBA Fun in the Sun / 2015 Huntfield Derby Finals
January 23-24	American Dressage Concours I&II
January 27- 31	Venice Equestrian Tour I
February 3-7	Venice Equestrian Tour II
February 10-14	Venice Equestrian Tour III
February 12-14	Fox Lea Quarter Horse "Love Circuit" - during the Winter Venice H/J Equestrian Tour
February 17-21	Venice Equestrian Tour IV
February 24-28	Venice Equestrian Tour V
March 2-6	Venice Equestrian Tour VI
March 12-13	Florida Dressage Concours I&II
March 18-20	Florida Super Eight I - Appaloosa Circuit
March 21-24	Florida Super Eight Appaloosa Circuit Layover
March 25-27	Florida Super Eight II - Appaloosa Circuit
April 2-3	April Open Series Show
April 9-10	April Dressage Concours I&II
April 23-24	Sprint Open Series Show
April 29 - May 1	Spring Concours I + \$25,000 Grand Prix
May 14-15	May Open Series Show
May 27-29	Spring Concours II + \$25,000 Grand Prix
June 11-12	June Open Series Show
June 24-26	School's Out! National + \$5,000 Mini Prix
July 13-16	Camp Dress Rehearsal - National Show + \$25,000 Grand Prix
July 18-21	Pre-Camp Shows - National Show + \$25,000 Grand Prix
July 23-26	Camp Fox Lea - National Show + \$25,000 Grand Prix
July 28-31	Plain Brown Wrapper - National Show + \$25,000 Grand Prix
August 20-21	August Open Series Show
August 27-28	Fall Dressage Concours I & II
September 9-11	Fox Lea September National + \$25,000 Grand Prix
TBA	"Four Seasons" Fall Quarter Horse Show
October 8-9	October Open Series Show
October 22-23	Dressage Schooling & GMO Championships
November 12-13	November Open Series Show
November 18-20	November National Year-End Circuit Awards
December 10	Open Series End-of-Year Awards Banquet
December 10-11	December Open Series Show - First Show of 2017 Series

# Fox Lea Farm is one of the top contributors to sports tourism across both Manatee and Sarasota Counties

## 2016 Economic Impact Rankings

### Facility

IMG Academy

Lido Beach

Premier Sports Campus

Fox Lea Farm

Orioles Complex

Nathan Benderson Park

Babe Ruth Complex

Cal Ripken

Selby Aquatic Center

Van Wezel/ Ringling Bridge

Palm Aire Country Club

Bypass Park

Siesta Key Beach

Robarts Arena

### Economic Impact

\$38,485,822.58

\$37,320,911.10

\$22,575,061.97

\$16,364,161.20

\$15,790,601.77

\$14,112,214.77

\$8,792,643.49

\$4,952,089.16

\$3,938,270.10

\$3,892,938.12

\$2,725,807.63

\$1,732,635.31

\$1,633,539.17

\$925,956.34

Manatee County

Sarasota County

Manatee County

Sarasota County

Sarasota County

Sarasota County

*NOTE: the economic impact listed by Visit SRQ only includes 17 of the 40+ annual events hosted by Fox Lea Farm*

Source: Visit Sarasota County



## NOTICE OF PROXIMITY

- Acknowledgment of the proximity of their property to the adjacent Fox Lea Farm equestrian facility.
- Fox Lea Farm operates on a year round basis, holding national horse shows, events and riding lessons 180 or more days a year, starting as early as 7:00 am and continuing until 10:00 pm or later.
- As an operational horse show and training facility, Fox Lea Farm has a high volume of large vehicles frequenting the property to deliver and remove horses and riders from the property, including, but not limited to, RVs, semi-trailers and large horse trucks.
- Horse shows, events and riding lessons are held on both week days and nights, and weekend days and nights, with spectators invited to the facility.
- Everyday operations at the facility are facilitated by the use of loud speakers and lights, starting as early as 7:00 am and continuing as late as 10:00 pm or later.
- As a year round horse stable, Fox Lea Farm generates the associated smells of boarding livestock and produces dust from vehicles and riders using the facility, even with mitigation practices in place. Fox Lea Drive, a public dirt road, is the road over which all vehicle traffic enters and exhibits Fox Lea Farm. The vehicles utilizing the dirt road create dust, which can be significant at times.
- As one of the preeminent show host equestrian facilities in the State of Florida, Fox Lea Farm plans to increase the size of the facilities and frequency of shows hosted on site.

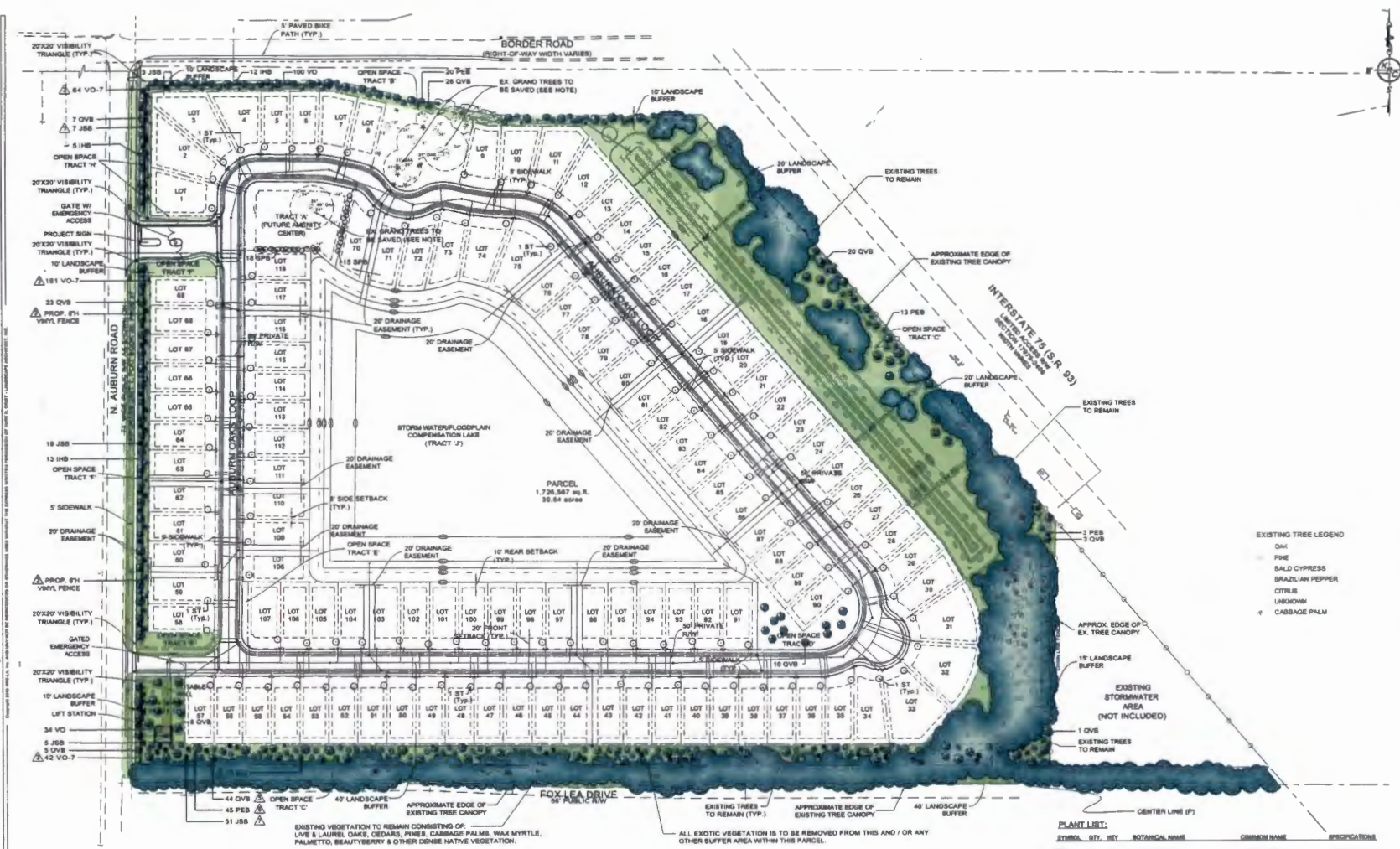


***The Preserves of Venice will work with Fox Lea Farm and if necessary, the Southwest Florida Water Management District to assure that the dewatering of the proposed lake will not result in adverse impacts to water and soil resources within, and critical to the continued economic vitality of, Fox Lea Farm.***

## STIPULATIONS

1. A buffer, at minimum 40 feet wide, shall extend across the entire southern boundary of the property.
2. Developer, its successors and assigns, shall maintain in perpetuity the density of the vegetation existing at the time of zoning approval within the buffer, as described in Stipulation #1, and within adjacent ROW to the south through the use of conservation of existing vegetation, new landscape plantings, or both.
3. Prior to the commencement of any horizontal work onsite, Developer shall install a 6 foot high a wall along the entire southern boundary of the property.
4. Developer shall use its best efforts to limit land development and building construction along the southern boundary during the months of January, February, March, July and August.
5. No pools shall be constructed or installed in backyards of Lots 32 through 57.
6. The Developer shall incorporate into the homeowner association documents an express prohibition on the launching of drones or radio-controlled aircraft from within the development which would fly over Fox Lea Farm, unless permission is received in writing from Fox Lea Farm.
7. Stipulation to be provided by Expert Hydrologists/Water Engineers Pro Water Resources.

NOTE: By Separate Exhibit, additional language to be incorporated into the Notice of Proximity.



**REVISION TABLE (6/7/17)**

- ▲ Add 1 JBB (So. Red Cedar) tree
- ▲ Add 6' High Vinyl Fence
- ▲ Increased Viburnum size from 24" h. 3 gal. to 36" h. 7 gal.
- ▲ Add 11 ICB (Dahoon Holly) trees
- ▲ Add 3 QVB (Live Oak) trees
- ▲ Add 18 PEB (Slash Pine) trees
- ▲ Add 3 JBB (So. Red Cedar) trees
- ▲ Add 6' High Vinyl Fence

**EXISTING TREE LEGEND**

- OAK
- LIVE OAK
- BALD CYPRESS
- BRAZILIAN PEPPER
- CITRUS
- UNIDENTIFIED
- CABBAGE PALM

**PLANT LIST:**

SYMBOL	QTY	SETY	BOTANICAL NAME	COMMON NAME	SPECIFICATIONS
○	27	ICB	<i>Ilex cassine</i>	Dahoon Holly Tree	10" x 4" sp., 3" cal.
●	20	JBB	<i>Juniperus horizontalis</i> 'Easi Palmetto'	East Palmetto Holly Tree	10" x 4" sp., 3" cal.
●	65	BN	<i>Juniperus horizontalis</i>	So. Red Cedar Tree	10" x 4" sp., 3" cal.
●	11	PEB	<i>Podocarpus neriifolia</i>	Slash Pine Tree	10-12" x 6" sp., 3" cal.
●	147	QVB	<i>Quercus virginiana</i>	Live Oak Tree	12" x 6" sp., 3" cal.
●	23	IPB	<i>Sabal palmetto</i>	Cabbage Palm	10-20" tr., Cropped
○	118	ST	<i>Swida sp.</i>	Street Tree (On Lot)	10" x 4" sp., 3" cal.
●	287	VO-7	<i>Viburnum acerifolium</i>	Bweet Viburnum	26", 7 gal. (42% c.)
●	134	VO	<i>Viburnum acerifolium</i>	Bweet Viburnum	24", 5 gal. (27% c.)

**Kurt R. Crist -**  
Landscape Architect, Inc.

2808 South Ocean Loop  
Ocala, FL 34472  
Phone: (352) 236-2808  
Fax: (352) 236-8181

---

**PRESERVES OF VENICE**  
Border Road  
City of Venice, Florida

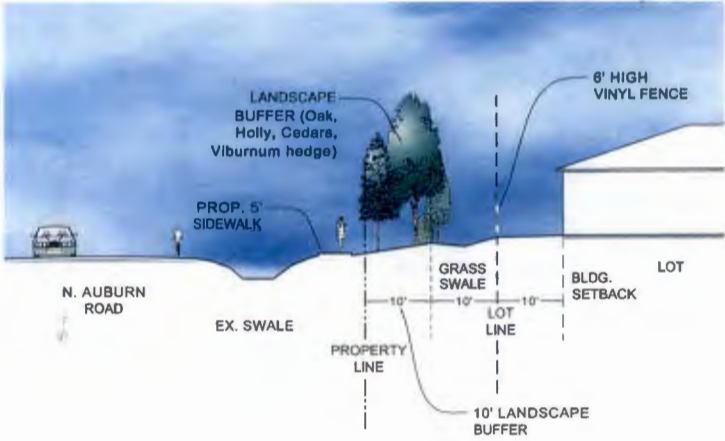
---

**LANDSCAPE PLAN**

Designed: *ms*  
Drawn: *msd*  
Scale: 1"=40'  
Date: 6/2/16  
Sheet: 1813-P-12.2L

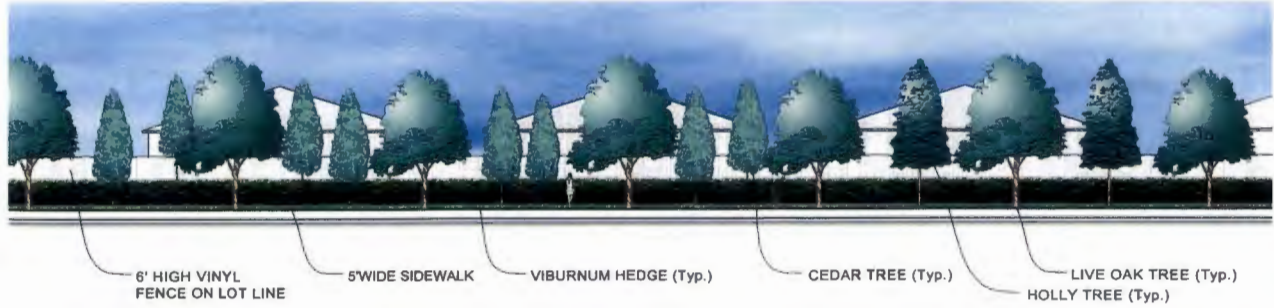
**L2**

Project #1813



**N. AUBURN ROADWAY CROSS SECTION**

SCALE: 1"=8'



**N. AUBURN ROAD ELEVATION**

SCALE: 1"=8'

**Kurt R. Crist -  
Landscape Architect, Inc.**

2700 West Creek Lane  
Orange, FL 32726-2609  
Phone: 813-274-8111  
www.krcrist.com

---

**PRESERVES OF VENICE**  
Border Road  
City of Venice, Florida

---

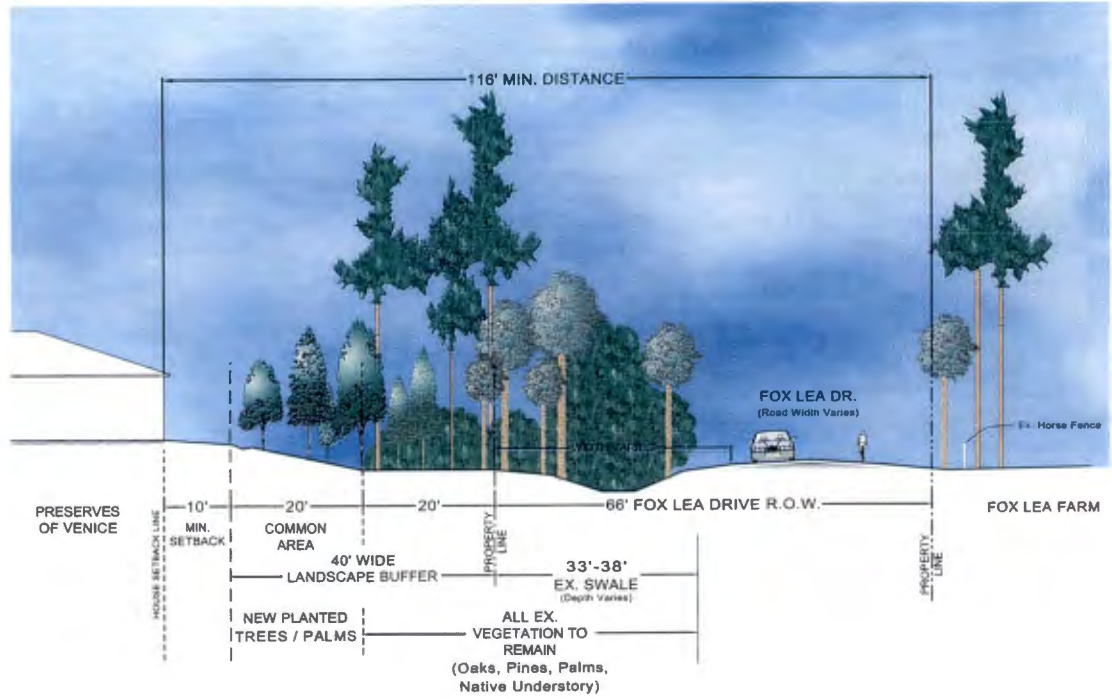
SECTION & ELEVATION

DESIGNED	DATE
DRAWN	DATE
CHECKED	DATE
SCALE	ON PLAN
DATE	BY
SHEET	10012-1-12-01

**L4**

of 5

Project #10013



**FOX LEA DRIVE ROADWAY CROSS SECTION**

SCALE: 1"=8'

**Kurt R. Crist -  
Landscape Architect, Inc.**  
2288 South Coast Lane  
Orlando, FL 32811  
Phone: (407) 374-2800  
Fax: (407) 374-2100  
www.krcrist.com

No.	Revision	Date

**PRESERVES OF VENICE**  
Border Road  
City of Venice, Florida

SECTION

Designed	
Drawn	
Scale	ON PLAN
Date	8/7/17
Sheet	100134-13.04

**L5**  
of 5  
Project #15013