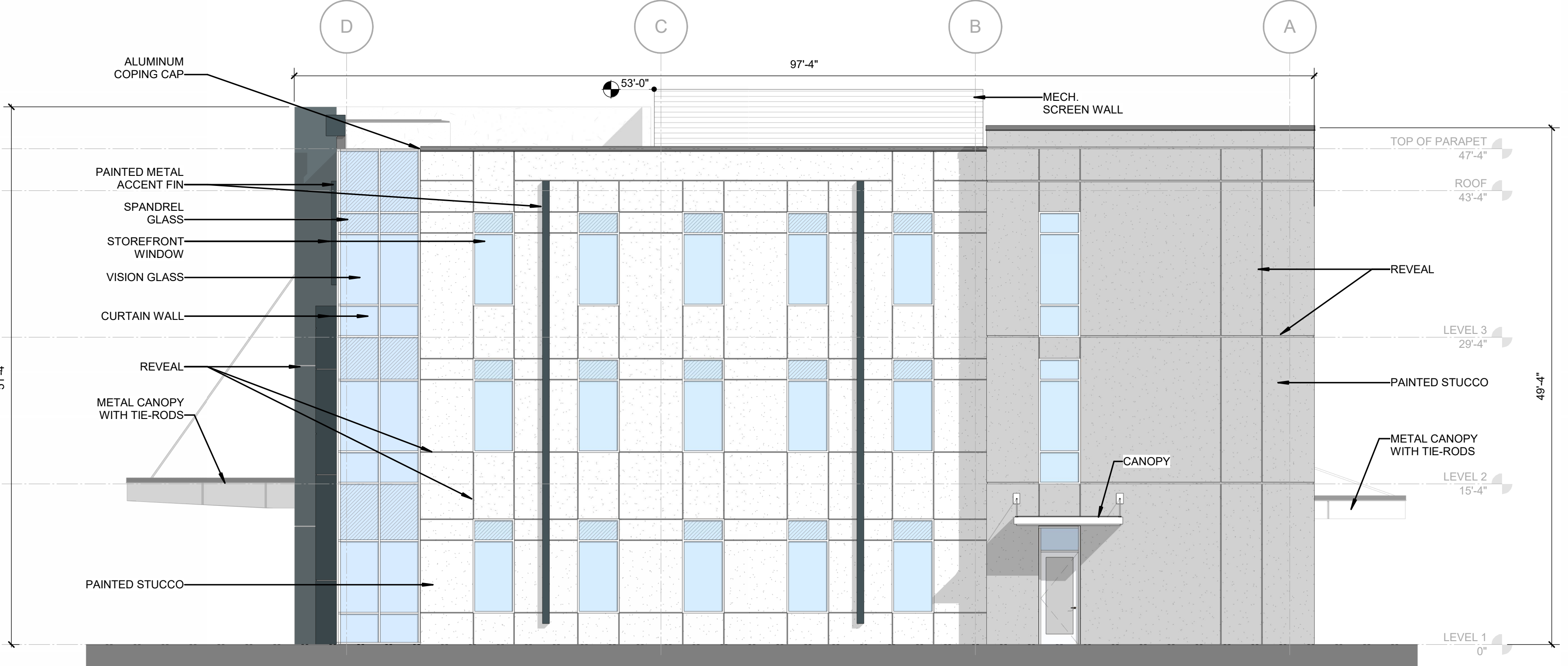
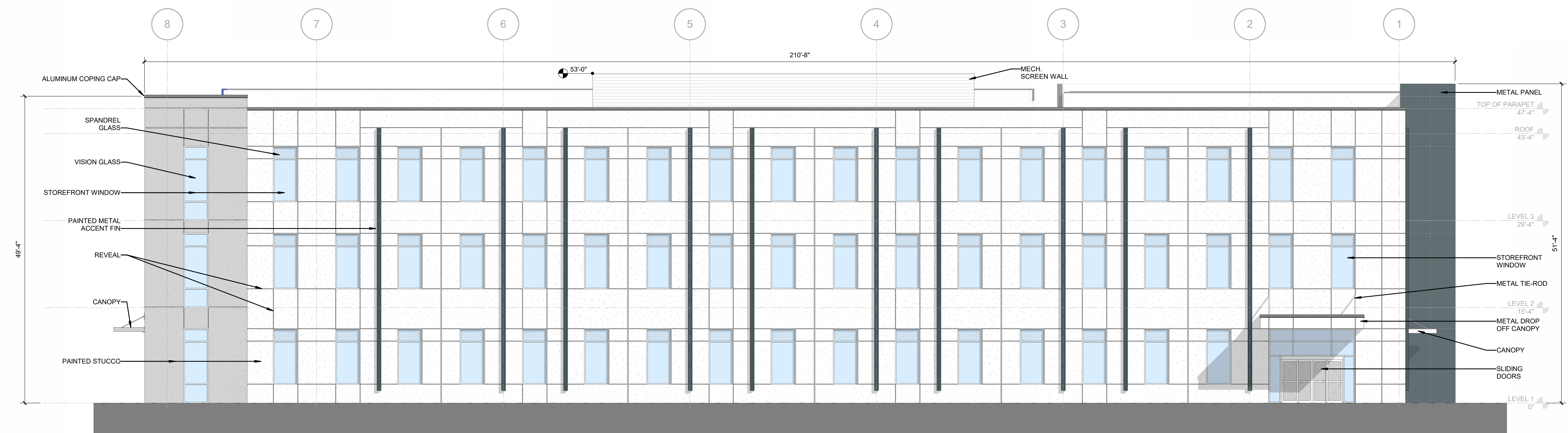




3 ELEVATION- EXTERIOR- WEST
AP-209 1/8" = 1'-0"



4 ELEVATION- EXTERIOR- EAST
AP-209 1/8" = 1'-0"



2 ELEVATION- EXTERIOR- NORTH
AP-209 1/8" = 1'-0"



1 ELEVATION- EXTERIOR- SOUTH
AP-209 1/8" = 1'-0"

- NOTES:
- WINDOWS & DOORS - BASIS OF DESIGN TO BE INSULATED KAWNEER FRAME AND GUARDIAN CLEAR LOW E GLAZING. FRAME COLOR TO BE SELECTED FROM FULL RANGE OF STANDARD COLORS. GLASS COLOR TBD. FRAME, DOOR AND GLASS SHALL MEET FLORIDA HURRICANE DESIGN AND ENERGY REQUIREMENTS.
 - PROVIDE ALLOWANCE FOR ALUMINUM PANEL SCREEN WALL ON GALVANIZED METAL FRAME FOR HVAC SCREEN (NOT SHOWN ON DRAWINGS)
 - PROVIDE POWER FOR (4) SIGNAGE LOCATIONS. LOCATION TBD BY OWNER
 - PROVIDE A MINIMUM OF (2) EXTERIOR STUCCO COLORS
 - PROVIDE A MINIMUM OF (2) METAL PANEL COLORS
 - BUILDING DESIGN, COLORS AND MATERIALS ARE SUBJECT TO CHANGE.



BUILDING RENDERING - FOR ILLUSTRATION PURPOSES ONLY