

7100011
INDUSTRIES LLC
0005494

PID:0407100009
TRITON HOLDINGS AND DEVELOPMENT LLC
ORI 2020107942

PID:0407100006
CHRISTOPHERS OF EPIPHANY INC
ORB 1690, PAGE 331
(UNAVAILABLE ONLINE)

PLANT LIST:

KEY	KEY	BOTANICAL NAME	COMMON NAME	SPECIFICATIONS
5	BBC	Bucida buxeras 'Shady Lady'	Shady Lady Black Olive Tree	12'h x 6'spr., 5'ct min., 3'cal.
13	CEC	Conocarpus erectus	Green Buttonwood Tree	10'-12'h x 5'spr., 5'ct min., 3'cal.
6	ICC	Ilex cassine	Dahoon Holly Tree	8'-10'h x 4'spr., 2.5'cal.
9	QVC	Quercus virginiana	Live Oak Tree	12'-14'h x 6'spr., 5'ct min., 3'cal.
12	SPB	Sabal palmetto	Cabbage Palm	15'-22'ca. Slack, Cropped
26	VO-7	Viburnum odoratissimum	Pitch Apple	36'h, 7 gal. (42'o.c.)

ZONED 'RMF1'

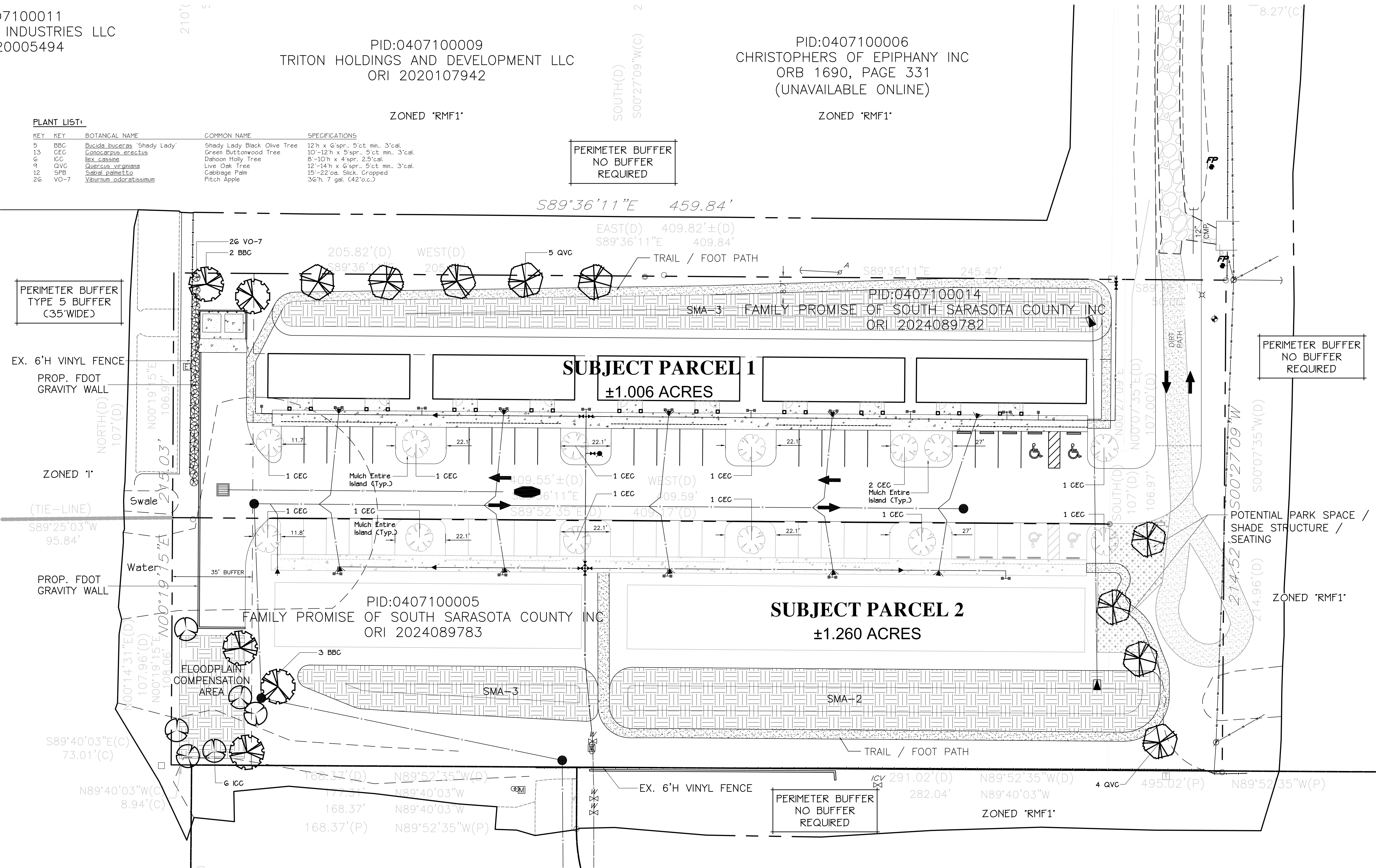
ZONED 'RMF1'

PERIMETER BUFFER
NO BUFFER
REQUIRED

PERIMETER BUFFER
NO BUFFER
REQUIRED

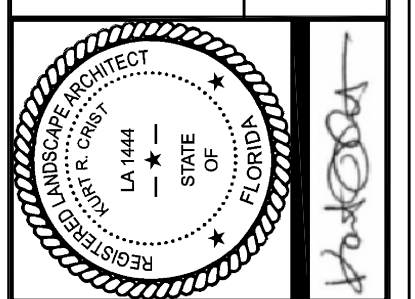
PERIMETER BUFFER
NO BUFFER
REQUIRED

Copyright 2025 KRC-LLC, Inc. AND MAY NOT BE REPRODUCED OR OTHERWISE USED WITHOUT THE EXPRESS WRITTEN PERMISSION OF KURT R. CRIST - LANDSCAPE ARCHITECT, INC.



**Kurt R. Crist -
Landscape Architect, Inc.**

2350 Barn Creek Loop
Sarasota, Florida 34240
Office: (941) 318-6060
email: krc@krcinc.com



No.	Revision	Date
1	Base update and respond to comments	3/31/26

**FAMILY PROMISE
PHASE I & FUTURE PHASE 2**
City of Venice, Florida

LANDSCAPE PLAN

Designed: krc
Drawn: cadd
Scale: 1"=20'
Date: 12/14/25
Sheet: 252016-2-11a

LAI
of 3
Project: #252016

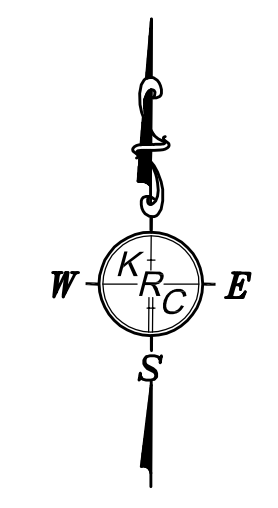
INDUSTRIES LLC
0005494

PID:0407100009
TRITON HOLDINGS AND DEVELOPMENT LLC
ORI 2020107942

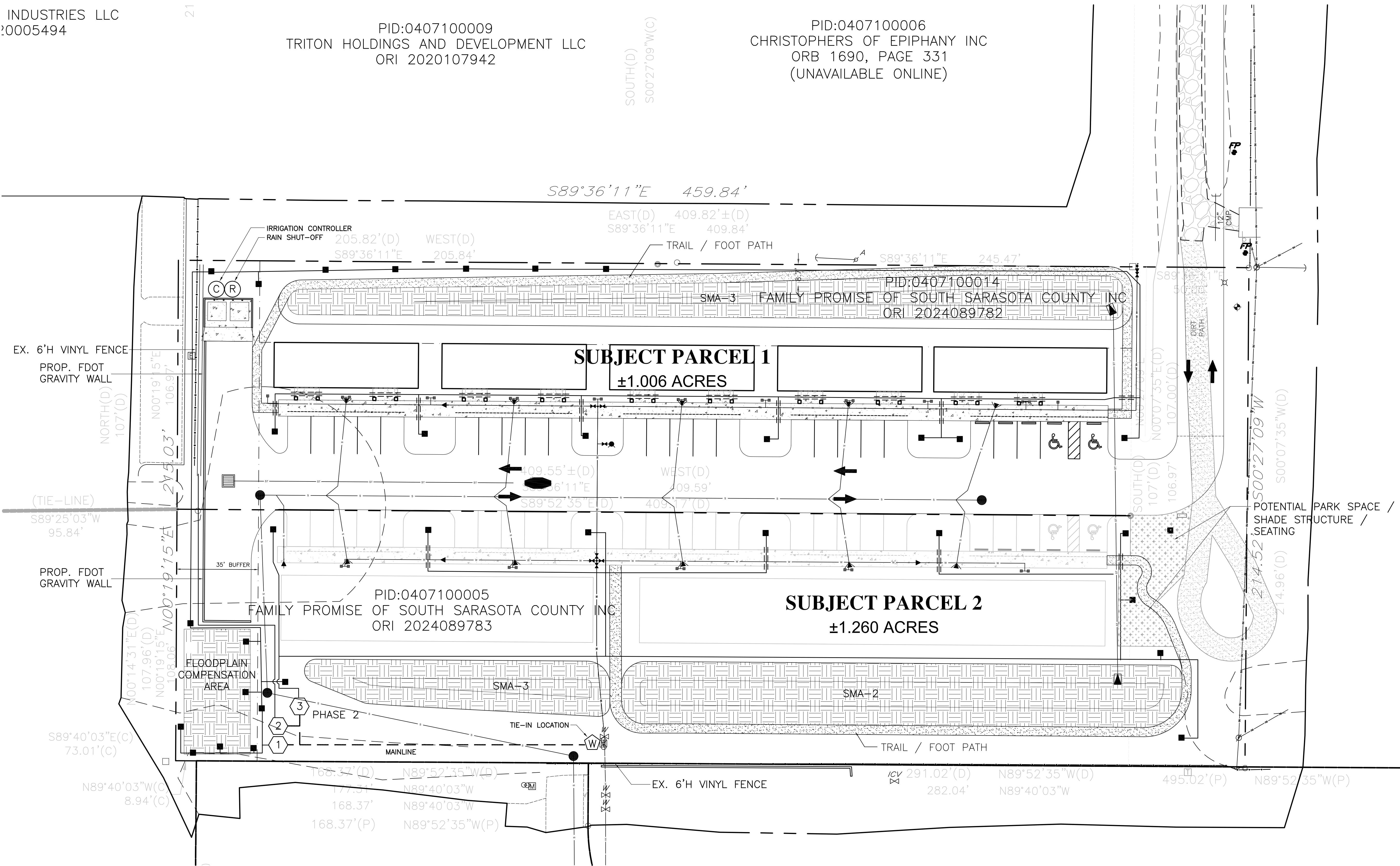
SOUTH(D)
S00°27'09"W(C)

PID:0407100006
CHRISTOPHERS OF EPIPHANY INC
ORB 1690, PAGE 331
(UNAVAILABLE ONLINE)

- IRRIGATION KEY**
- BUBBLER
 - DRIPLINE (0.9 GPM / 12" SPACING)
 - === SLEEVE (SCH 40 PVC)
 - LATERAL LINE (CL 160)
 - - - MAINLINE (CL 200) - 2X SIZE OF INTERNAL PIPE
 - ⊙ IRRIGATION CONTROLLER
 - ⊙ RAIN SENSOR
 - ⊙ WATER TIE-IN LOCATION
SEPARATE BFP (1" MIN.) 20 GPM



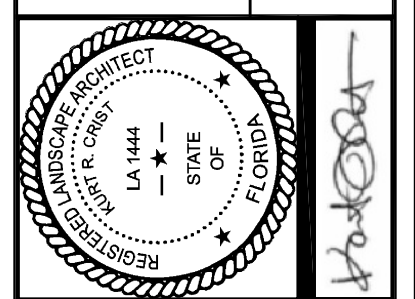
Copyright 2016 KRAI, Inc. and may not be reproduced or otherwise used without the express written permission of Kurt R. Crist - Landscape Architect, Inc.



Kurt R. Crist - Landscape Architect, Inc.

2350 Barr Creek Loop
Sarasota, Florida 34240
Office: (941) 578-8080
email: krc@krcdesign.com

FL REG. LA # 0001444
email: krc@krcdesign.com



No.	Revision	Date
1	Base update and respond to comments	3/31/26

FAMILY PROMISE
PHASE I & FUTURE PHASE 2
City of Venice, Florida

IRRIGATION PLAN

Designed: krc
 Drawn: cadd
 Scale: 1"=20'
 Date: 12/14/25
 Sheet: 25016.2-21a

LA2
of 3
Project: 25016

