

EXTERIOR FINISH SCHEDULE

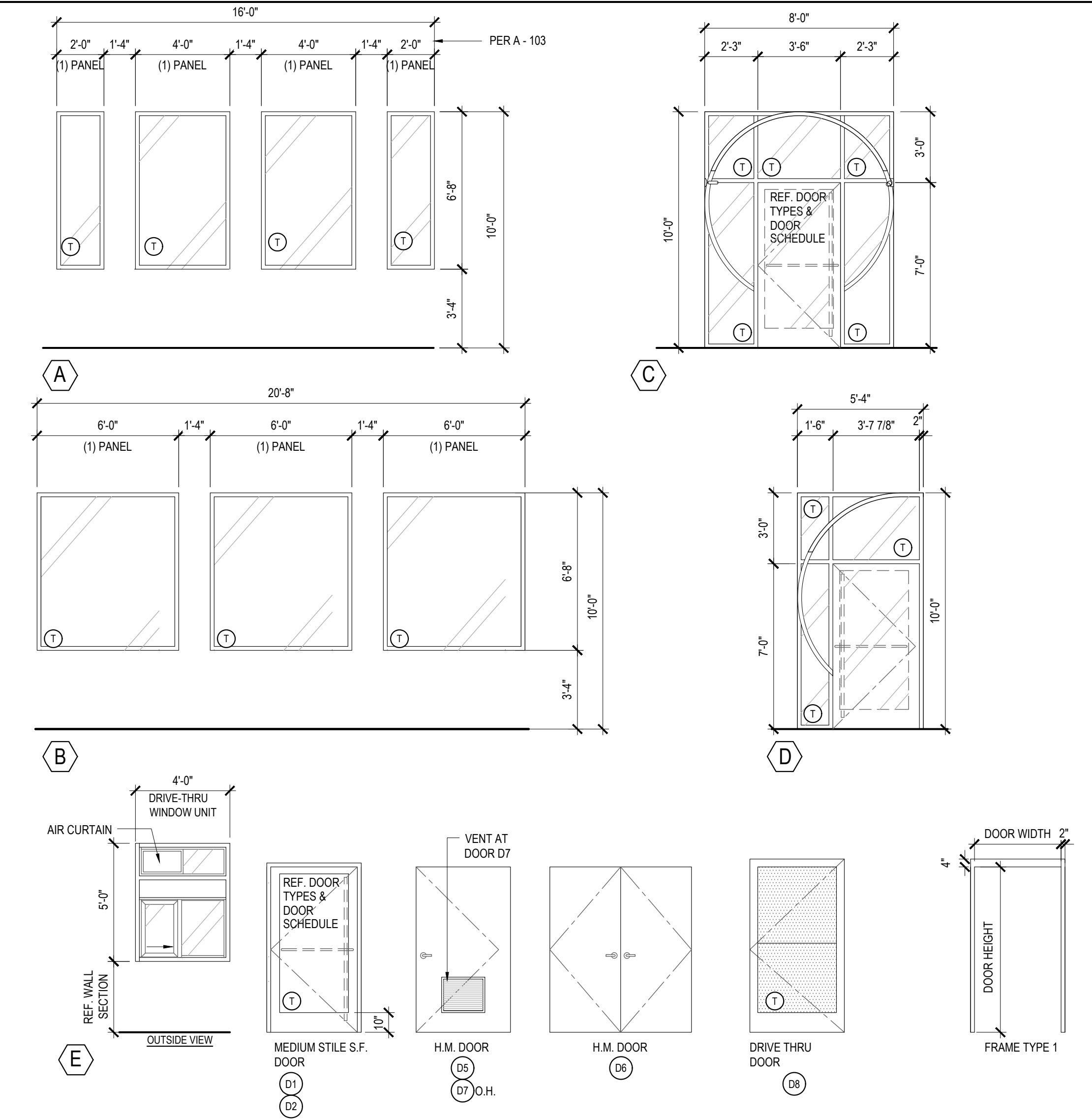
NO.	MANUFACTURER	MFG#	COLOR	FINISH	NOTES
EFIS-1	STO	STOTHERM ESSENCE SYSTEM	SW 7646 FIRST STAR	FINE	BUILDING BODY NOTE: EIFS TO RECEIVE FINAL COAT OF STO-CORP STO-LASTIC ELASTOMERIC COATING TINTED TO DESIRED COLOR AS SCHEDULED.
EFIS-2	STO	STOTHERM ESSENCE SYSTEM	SW 7069 IRON ORE	FINE	EIFS ACCENT BAND
EFIS-3	STO	STOTHERM ESSENCE SYSTEM	PANTONE COLOR P200C - RED	FINE	EIFS BEHIND TRELLIS
ST-1S	CORONADO STONE PRODUCTS	CHISELED STONE SILL	CHARCOAL	-	STONE CAP (3/8" VERTICAL JOINT - MORTAR TO MATCH STONE CAP)
ST-1	CORONADO STONE PRODUCTS	STRIP STONE	BLACK FOREST	-	WAINSCOT CONTACT: 864-962-1221 PROVIDE 3/8" MORTAR JOINTS. MFG.: ARGOS, COLOR: CHARCOAL
CD-1	FIBERON	WILDWOOD	BAMBOO	-	COMPOSITE CLADDING - CONTACT: MARIA SCHOLLER 419-704-5924 EMAIL: MARIA.SCHOLLER@FIBERONCLADDING.COM
MTL-1	EXCEPTIONAL METALS	-	"PANDA EXPRESS SW7069 - IRON ORE"	-	CAP FLASHING
MTL-2	PANDA VENDOR	ALLEN INDUSTRIES	PMS BLACK- 7C	SATIN FINISH	CANOPY W/ LED W/ DOWN LIGHT AROUND BUILDING
MTL-3	BERRIDGE	TEE PANEL, 24 GA. STEEL	MATTE BLACK	-	1" SEAM AT 12 3/4" O.C.

INSTALLED AND FURNISHED BY G.C. UNLESS NOTED OTHERWISE.

WINDOW SCHEDULE

SYM	WIDTH	HEIGHT	GLASS	FRAME	REMARKS	NOTES
A	16'-7" LIN. FEET	6'-8"	1" INSULATED GLASS	BLACK ANOD. ALUMINUM STOREFRONT	1" INSULATED GLAZING, IN 4.5' X 2" IN ANODIZED ALUMINUM FRAME REFER WINDOW TYPES FOR INDIVIDUAL SIZES	1. INSULATING GLASS SOLARBAN 60 LOW E- WINTER U=0.29; SHGC: 0.25; VIS TRANS: 35%. GLAZING TO BE COMPATIBLE AND IN ACCORDANCE WITH FLORIDA PRODUCT APPROVAL NUMBER. 2. DOORS: FULL GLAZED DOORS W/10" KICK BASE, ANODIZED ALUM. FINISH. REFER HARDWARE SCHEDULE. ENTRANCE DOORS U-FACTOR TO BE U-0.33 OR BETTER 3. WINDOW DIMENSIONS ARE FOR BIDDING PURPOSES ONLY. G.C. TO VERIFY ACTUAL WINDOW DIMENSIONS PRIOR TO FABRICATION INSTALLATION.
B	20'-8" LIN. FEET	6'-8"	1" INSULATED GLASS	BLACK ANOD. ALUMINUM STOREFRONT	1" INSULATED GLAZING, IN 4.5' X 2" IN ANODIZED ALUMINUM FRAME REFER WINDOW TYPES FOR INDIVIDUAL SIZES	4. GLASS FACADE AND ENTRY DOORS TO BE DESIGNED, DETAILED, FACTORY FABRICATED AND SITE ASSEMBLED AND ERECTED.
C	8'-0"	10'-0"	1" INSULATED GLASS	BLACK ANOD. ALUMINUM STOREFRONT	KAWNEER CURTAIN WALL 1620 SYSTEM WITH 1" INSULATED GLAZING, IN 6' X 2" IN ANODIZED ALUMINUM FRAME MOON GATE TO CONNECT WITH KAWNEER ATTACHMENT BRACKET 834-745.	5. WINDOW SYSTEM SHALL COMPLY WITH APPLICABLE SECTION AND CHAPTER OF BUILDING CODE.
D	5'-4"	10'-0"	1" INSULATED GLASS	BLACK ANOD. ALUMINUM STOREFRONT	KAWNEER CURTAIN WALL 1620 SYSTEM WITH 1" INSULATED GLAZING, IN 6' X 2" IN ANODIZED ALUMINUM FRAME MOON GATE TO CONNECT WITH KAWNEER ATTACHMENT BRACKET 834-745.	
E	4'-0"	59 1/2"	1" INSULATED GLASS	DARK BRONZE ANODIZED ALUMINUM	QUICK-SERV DRIVE-THRU WINDOW WITH (NON-HEATED AIR CURTAIN OR HEATED AIR CURTAIN), WITH THRU-BEAM PHOTO-ELECTRIC BAR, ROUGH OPENING 48" X 60". REF. EQUIPMENT SCHEDULE FOR ADDITIONAL INFORMATION. CONTACT: BRIAN McCLOSKEY, 800-388-8307	
F	7'-10 3/8"	10'-0"	SINGLE PANE GLASS	DARK BRONZE ANODIZED ALUMINUM	SINGLE PANE VESTIBULE GLAZING	
G	2'-4 3/4"	10'-0"	SINGLE PANE GLASS	DARK BRONZE ANODIZED ALUMINUM	SINGLE PANE VESTIBULE GLAZING	
H	2'-2 1/8"	10'-0"	SINGLE PANE GLASS	DARK BRONZE ANODIZED ALUMINUM	SINGLE PANE VESTIBULE GLAZING	
I	4'-1"	10'-0"	SINGLE PANE GLASS	DARK BRONZE ANODIZED ALUMINUM	SINGLE PANE VESTIBULE GLAZING	

INSTALLED AND FURNISHED BY G.C. UNLESS NOTED OTHERWISE.

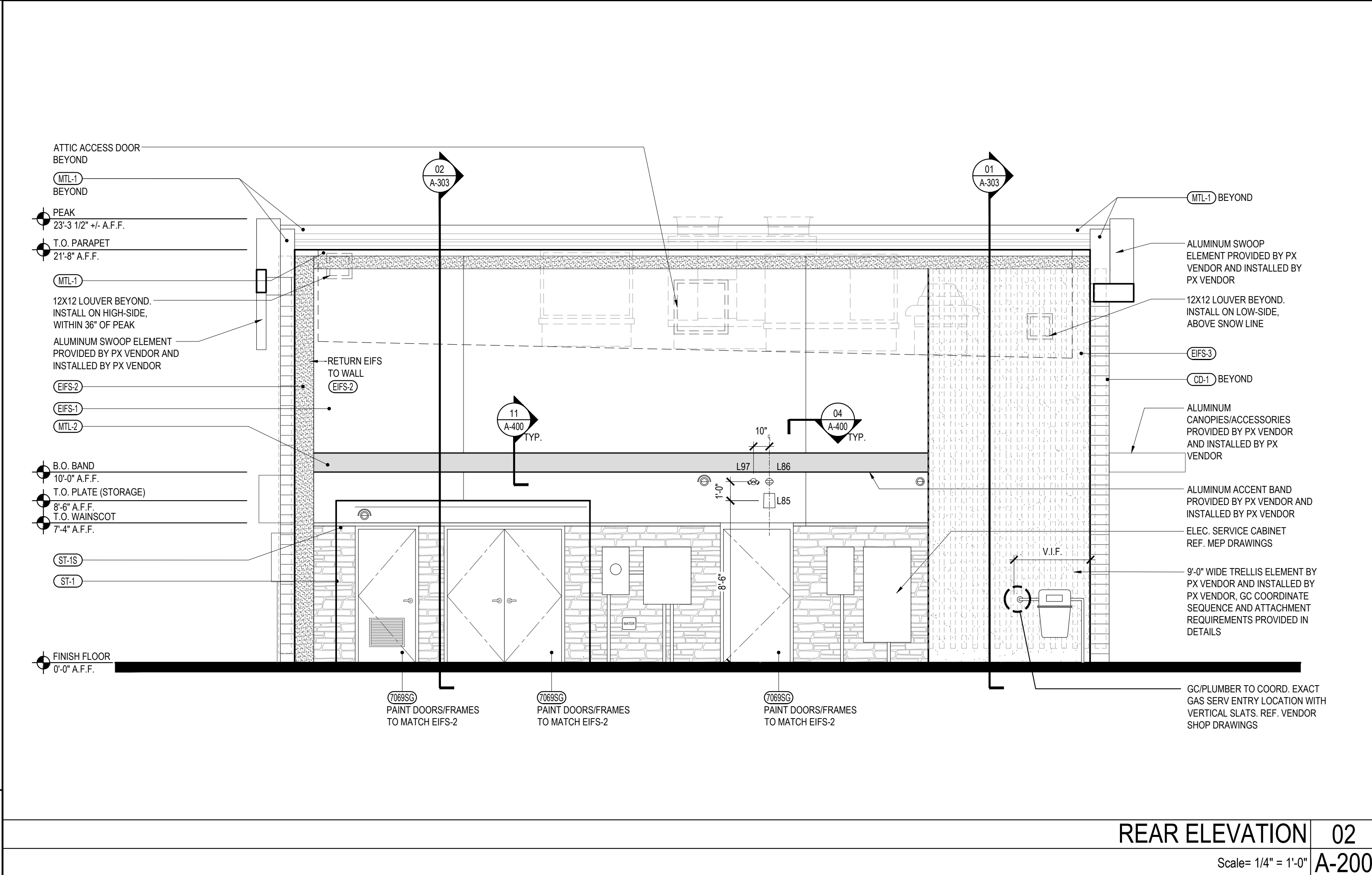


EXTERIOR WINDOW, DOOR AND FRAME ELEVATIONS

03

Scale= NTS

A-200

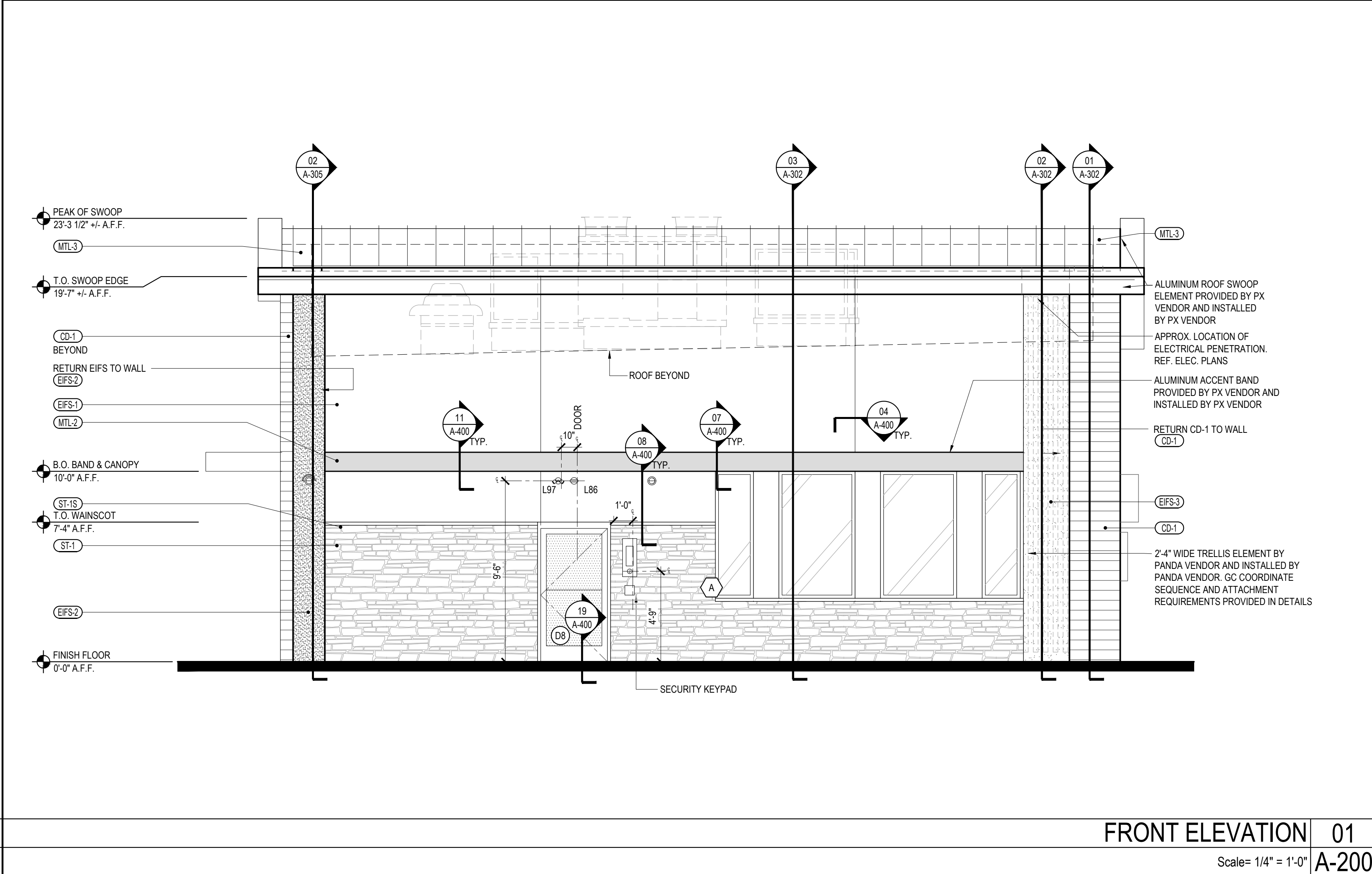


REAR ELEVATION

02

Scale= 1/4" = 1'-0"

A-200



FRONT ELEVATION

01

Scale= 1/4" = 1'-0"

A-200



PANDA EXPRESS, INC.  
1683 Walnut Grove Ave.  
Rosemead, California  
91770

Telephone: 626.799.9898  
Facsimile: 626.372.8288

All ideas, designs, arrangement and plans indicated or represented by this drawing are the property of Panda Express Inc. and were created for use on this specific project. None of these ideas, designs, arrangements or plans may be used by or disclosed to any person, firm, or corporation without the written permission of Panda Express Inc.

REVISIONS:

1		
2		
3		
4		
5		
6		
7		
8		
9		
10		

ISSUE DATE:

PERMIT SET	10/22/25

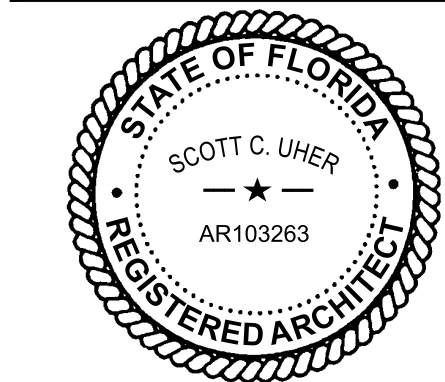
DRAWN BY: DMB/ JMS

CHECKED BY:MA / RAP

PANDA PROJECT #: S8-26-34743

PANDA STORE #: D34743

ARCH PROJECT #: 764433-02



2012 W 25th, Suite 200  
Cleveland, OH 44113  
Phone: 330.685.0600 Fax: 888.208.4826

PANDA EXPRESS

PANDA HOME ESSENTIALS  
2217 LAUREL RD  
NOKOMIS, FL 34275

A-200

EXTERIOR ELEVATIONS

PANDA HOME ESSENTIALS R2





PANDA EXPRESS, INC.  
1683 Walnut Grove Ave.  
Rosemead, California  
91770  
Telephone: 626.799.9898  
Facsimile: 626.372.8288

All ideas, designs, arrangement and plans indicated or represented by this drawing are the property of Panda Express Inc. and were created for use on this specific project. None of these ideas, designs, arrangements or plans may be used by or disclosed to any person, firm, or corporation without the written permission of Panda Express Inc.

REVISIONS:

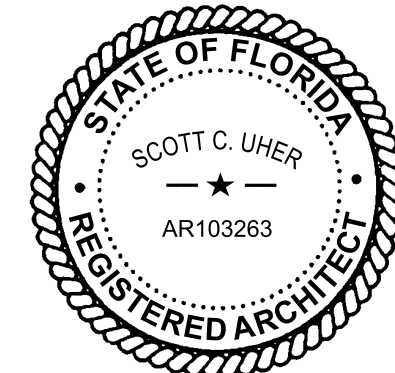
1	
2	
3	
4	
5	
6	
7	
8	
9	
10	

ISSUE DATE:

PERMIT SET	10/22/25

DRAWN BY: DMB/ JMS  
CHECKED BY: MA / RAP

PANDA PROJECT #: S8-26-34743  
PANDA STORE #: D34743  
ARCH PROJECT #: 764433-02



CESO  
WWW.CESOINC.COM  
2012 W 25th, Suite 200  
Cleveland, OH 44113  
Phone: 330.685.0200 Fax: 888.208.4826

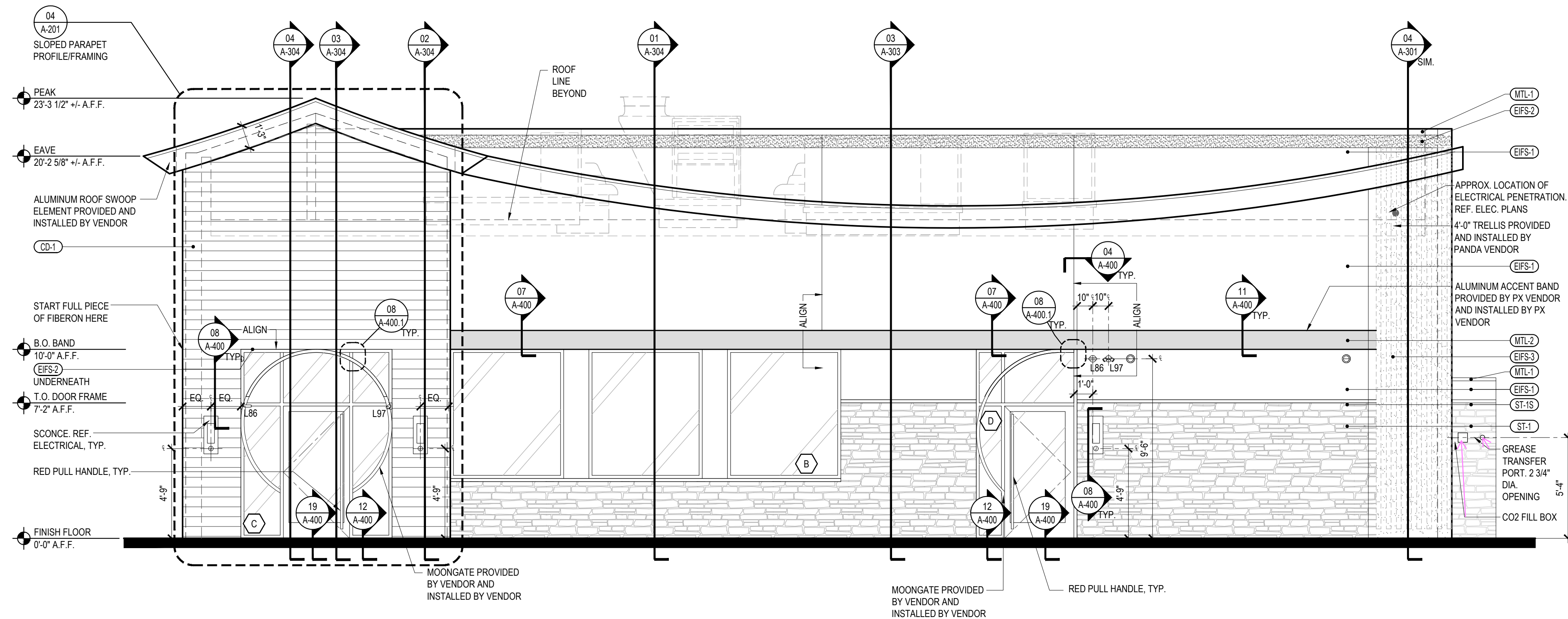
PANDA EXPRESS

PANDA HOME ESSENTIALS  
2217 LAUREL RD  
NOKOMIS, FL 34275

A-201

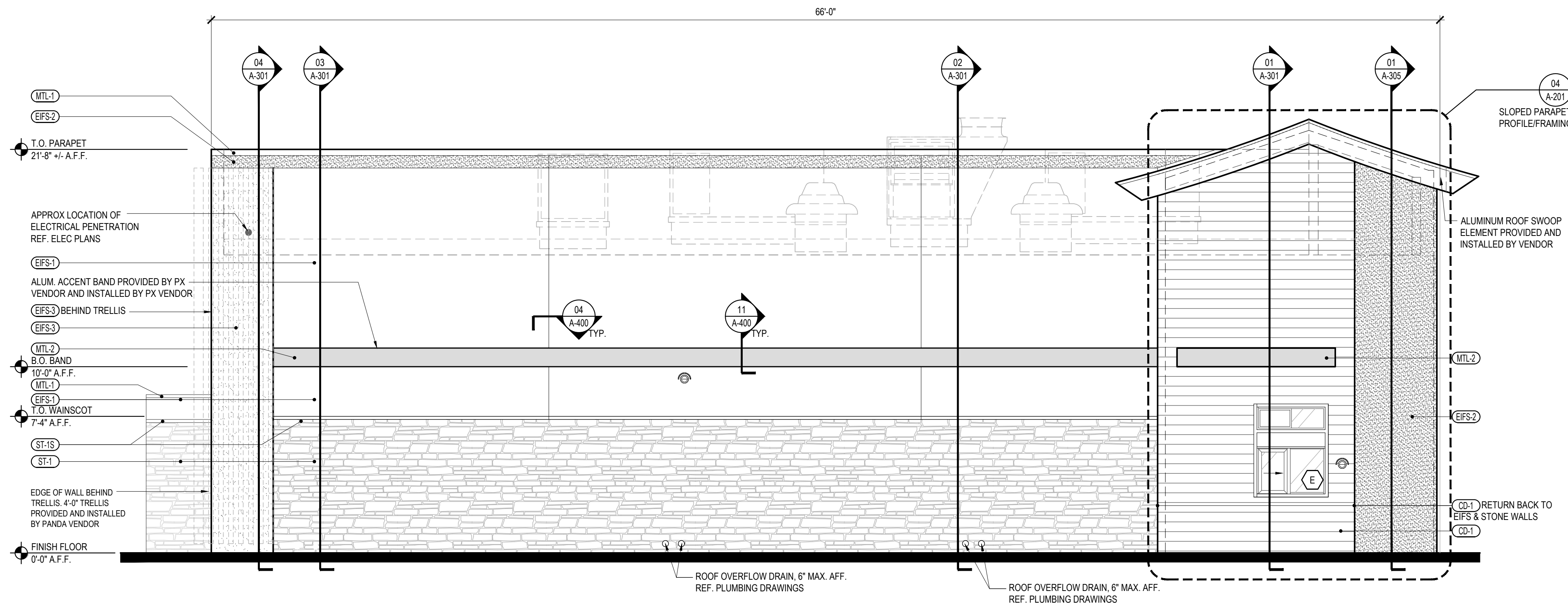
EXTERIOR ELEVATIONS

PANDA HOME ESSENTIALS R2



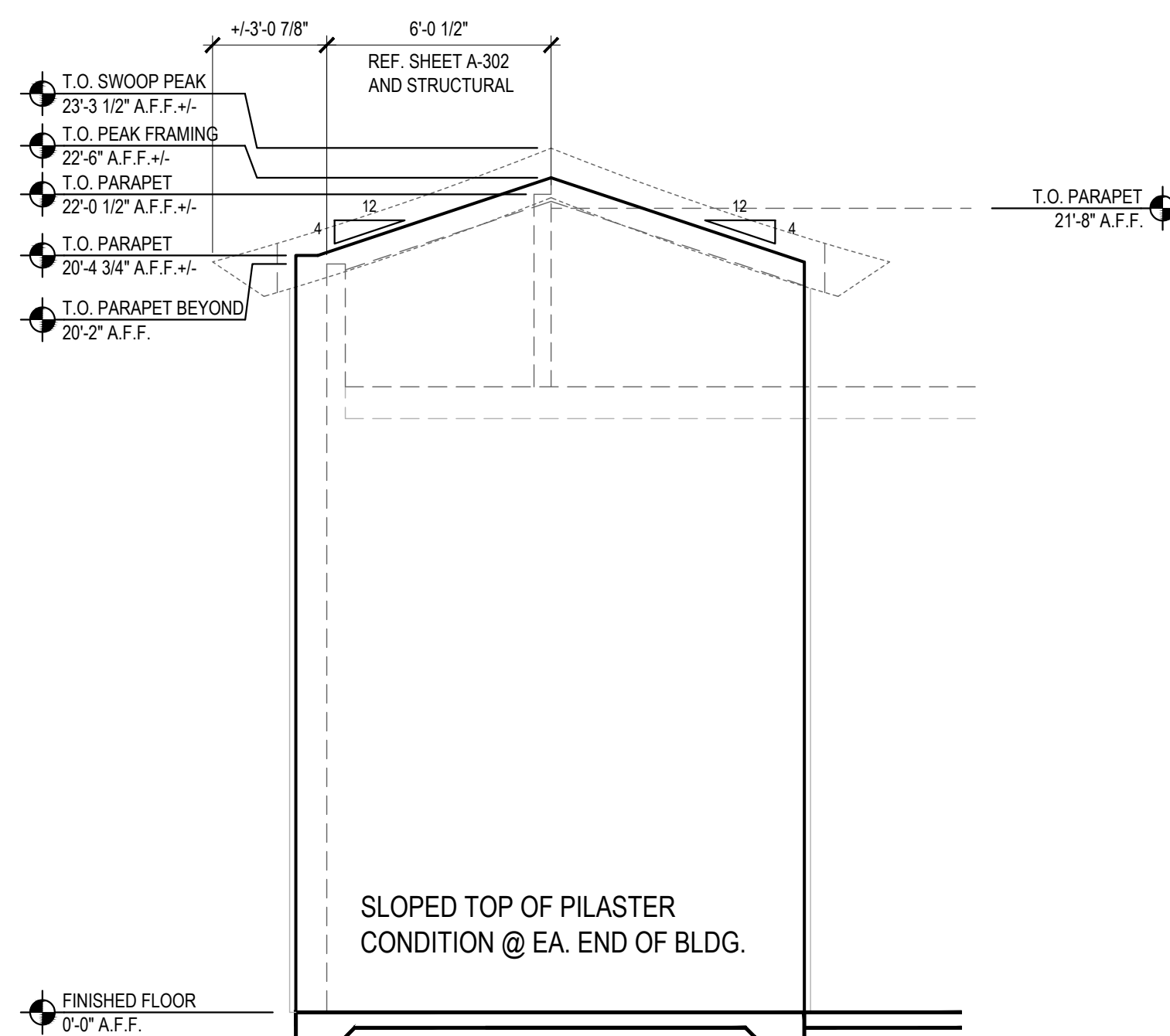
ENTRY ELEVATION 02

Scale= 1/4" = 1'-0" A-201



DRIVE-THRU ELEVATION 01

Scale= 1/4" = 1'-0" A-201



SLOPED PARAPET FRAMING PROFILE 04

Scale= 1/4" = 1'-0" A-201

\*SEE SHEET A-200 FOR EXTERIOR FINISH SCHEDULE



