

Venice Bay Adult Park, Inc.

Conditional Use Permit 25-71CU

Prepared By:
Kim Witkop

Prepared For:
City of Venice
Planning Commission

- **RV PARKING DOCUMENTED SINCE 1947**
- **VENICE BAY ADULT PARK, INC. 1982 NOT FOR PROFIT**
- **GOVERNED BY 7 BOARD OF DIRECTORS**
- **UPDATED ELECTRICAL FOR ALL LOTS**
- **4 SMALL PARCELS OWNED BY ASSOCIATION**

VENICE BAY ADULT PARK

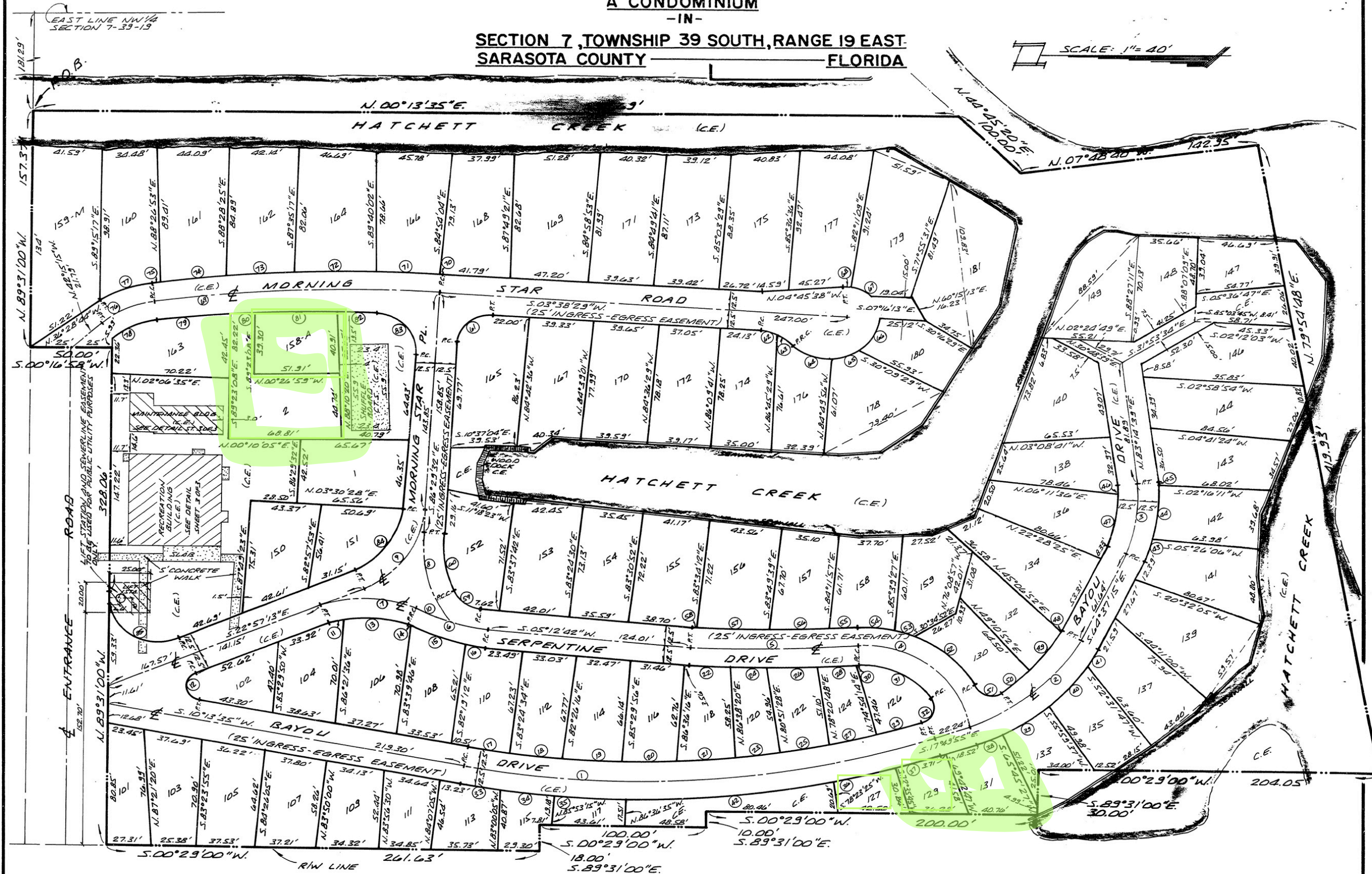
A CONDOMINIUM

-IN-

SECTION 7, TOWNSHIP 39 SOUTH, RANGE 19 EAST,
SARASOTA COUNTY FLORIDA

CONDOMINIUM BOOK 20 PAGE 2A
SHEET 2 OF 3

SCALE: 1" = 40'



- NOTES:
- 1.) C.E. DENOTES COMMON ELEMENT
 - 2.) ELEVATIONS SHOWN HEREON REFER TO U.S.C. & G.S. DATUM.
 - 3.) BEARINGS SHOWN HEREON REFER TO STATE ROAD DEPARTMENT DATUM. (S.R.#45)

TAMIAMI TRAIL U. S. HIGHWAY NO. 41 STATE ROAD NO. 45

DARRELL E. GERKEN
Professional Land Surveyor

51 WALLACE AVENUE ■ SARASOTA, FLORIDA 33577 ■ PHONE 365-6595
1400 OGDEN ROAD ■ VENICE, FLORIDA 33595 ■ PHONE 484-0045

PROACTIVE MANAGEMENT



Utility Hookups Upgraded to Standards

Proper Parking Alignment and Setbacks

Clear Enforcement Policies for Waste Disposal and Potable Water System

Tenants Properly Screened with Background Check

COMMUNITY AND ECONOMIC BENEFIT



We respectfully request that the Commission grant the Conditional Use Permit to:

Continue contributing positively to
the City of Venice

Preserve a historic, longstanding
land use - RV use has coexisted
peacefully with surrounding
residential properties for 70+ years.

