

From: [Russ Grotrian](#)
To: [Planning Commission](#)
Cc: [Board and Council Messages](#)
Subject: [EXTERNAL] Site and Development Plan (24-46SP)
Date: Tuesday, January 20, 2026 11:10:29 AM
Attachments: [IMG_5245.png](#)
[IMG_5239.png](#)
[IMG_5240.png](#)

This Message Is From an Untrusted Sender

You have not previously corresponded with this sender.

Dear Venice FL Planning Commission:

In regards to Site and Development Plan (24-46SP); the proposed development area has been documented by the Florida Fish and Wildlife Conservation Commission as a historical Bald Eagle nesting area. Please see attached documents.

What are the considerations?

Sincerely,

Russ Grotrian

9:07 🌙

📶 📶 88

Florida Fish and Wildlife Conservation Commission (FWC) Historical Bald Eagle Nesting Areas

Welcome,

This map displays all bald eagle nesting areas documented by FWC during statewide aerial surveys conducted from 1998 to 2017. Each

polygon is labeled with the range of years where nest(s) were confirmed, not every nesting area was surveyed in each year.

The Historical Bald Eagle Nesting Areas map is not intended to take the place of a survey to determine the presence/absence, status, or exact location of a current eagle nest. Current eagle nests and potential habitat may or may not overlap with the nesting areas in this map.

Questions? New eagle nest?

Contact us at baldeagle@nyfwc.com

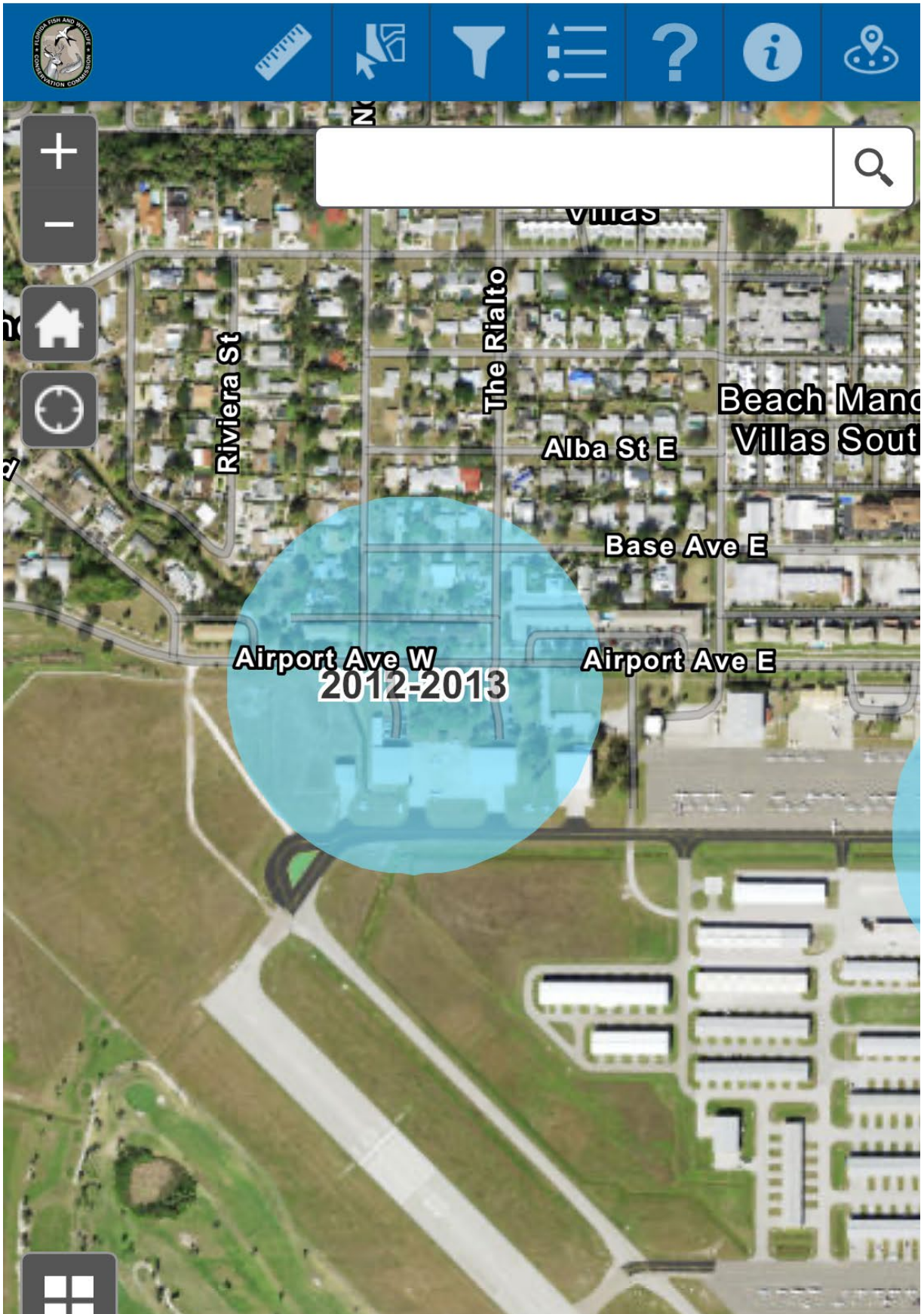
☐ I have read the above statement and understand the limitations of the data

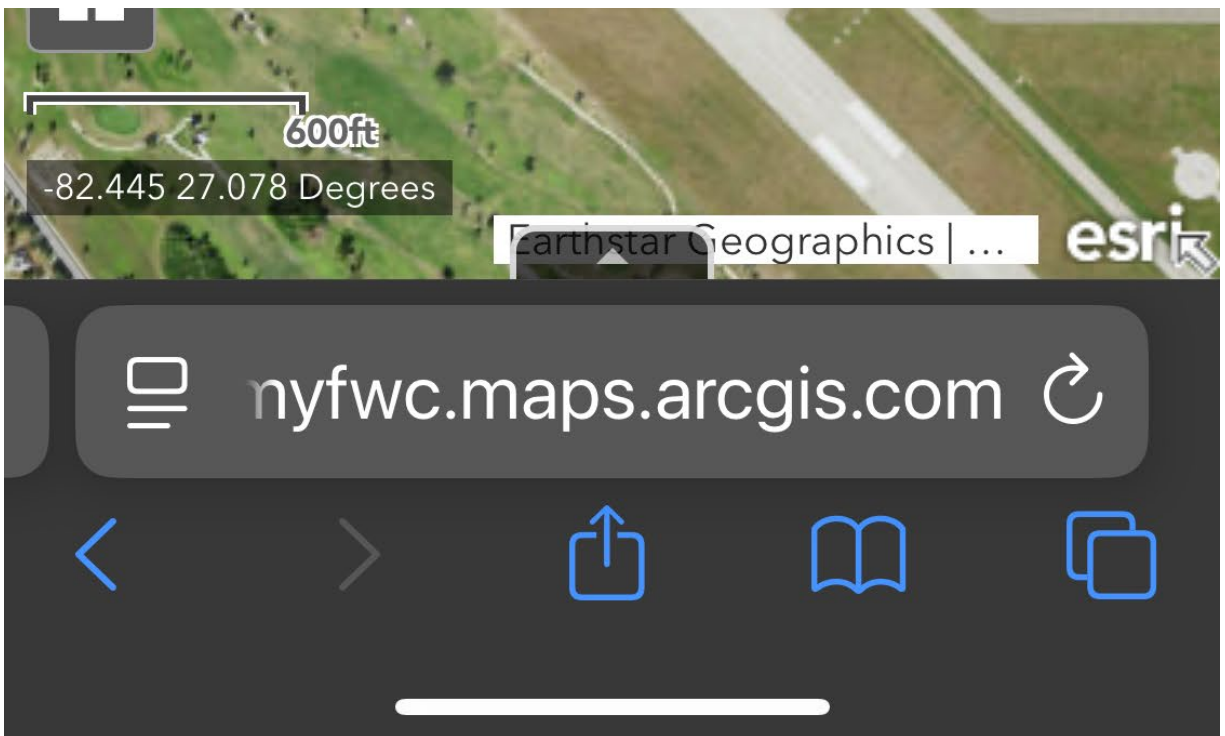
OK



nyfwc.maps.arcgis.com



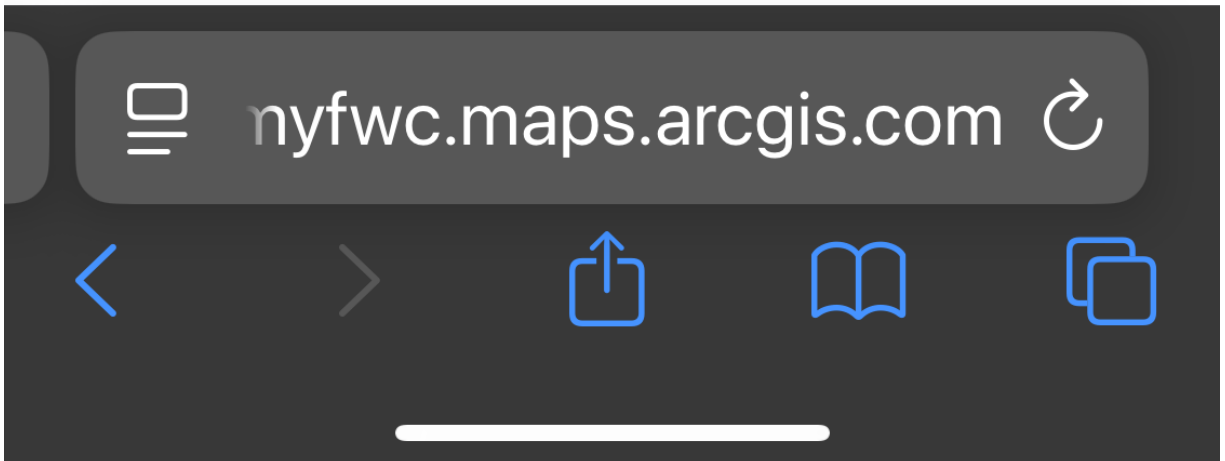




485

NestingAreaID	485
FirstObservation	2012
LastObservation	2013
DateRange	2012-2013

...





[Sent from Yahoo Mail for iPhone](#)