

te image by
gress

ze image on
ay

ust Brightness

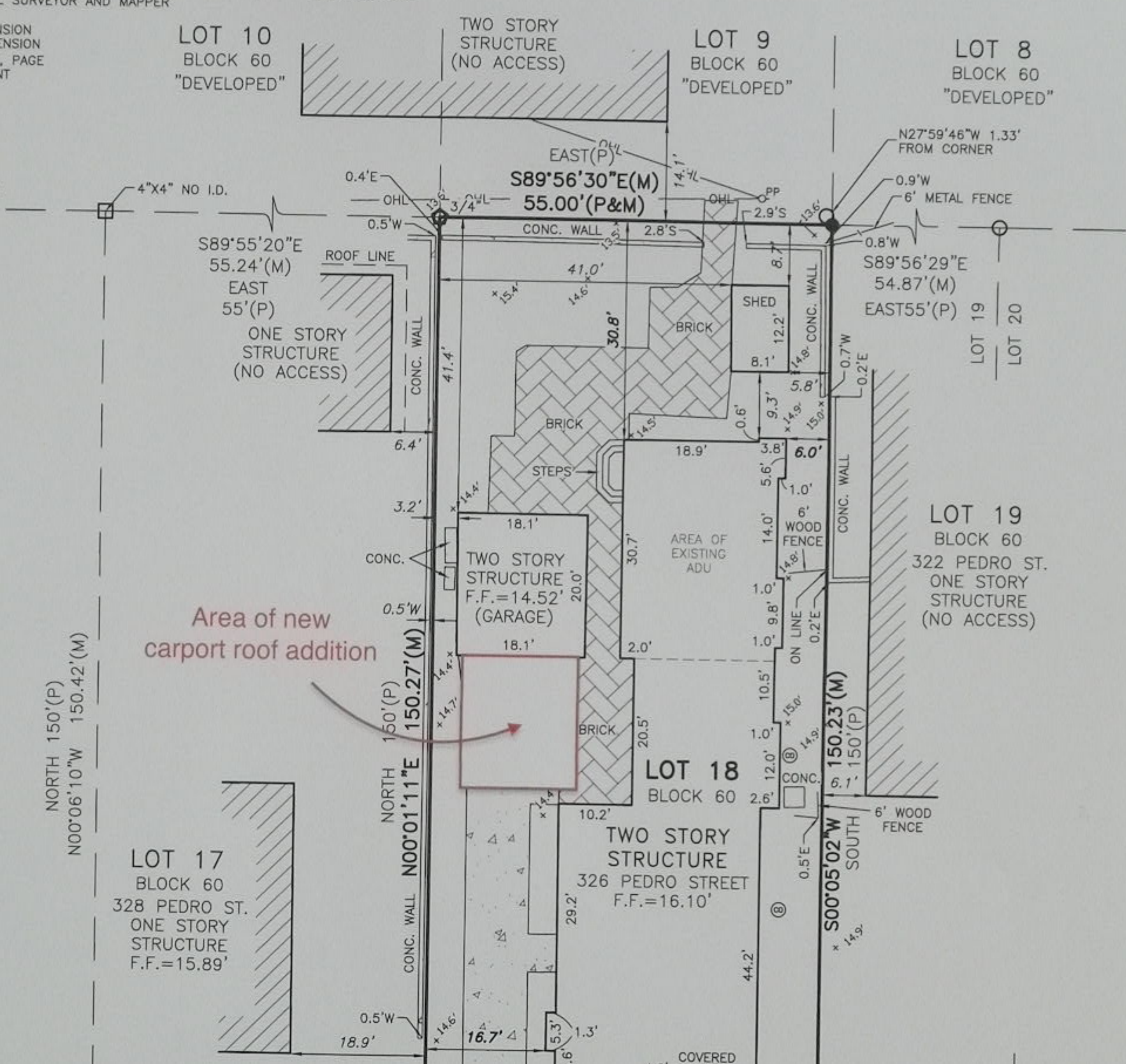
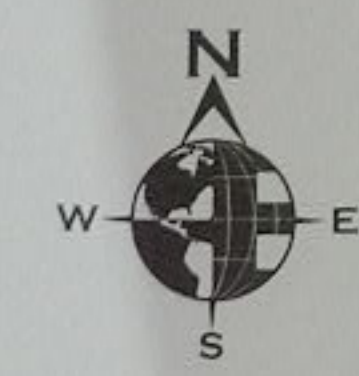
port image from
other source

tings Menu

- ⊗ = 5/8" CAPPED IRON ROD SET ("BPI LB 6639")
- ⊙ = 5/8" IRON ROD FOUND
- ⊕ = NAIL & DISK FOUND (I.D. NOTED)
- ⊖ = NAIL & DISK SET ("BPI LB 6639")
- ⊘ = IRON PIPE FOUND (SIZE NOTED)
- L.B. = LICENSED SURVEYOR BUSINESS
- P.L.S. = PROFESSIONAL LAND SURVEYOR
- P.S.M. = PROFESSIONAL SURVEYOR AND MAPPER
- (P) = PLAT DIMENSION
- (M) = MEASURED DIMENSION
- (C) = CALCULATED DIMENSION
- P.B., PG. = PLAT BOOK, PAGE
- C.M. = CONC. MONUMENT
- R/W = RIGHT-OF-WAY
- C/L = CENTER LINE
- F.F. = FINISHED FLOOR
- GAR. = GARAGE
- EL., ELEV. = ELEVATION
- CONC. = CONCRETE
- I.D. = IDENTIFICATION
- A/C = AIR CONDITIONER

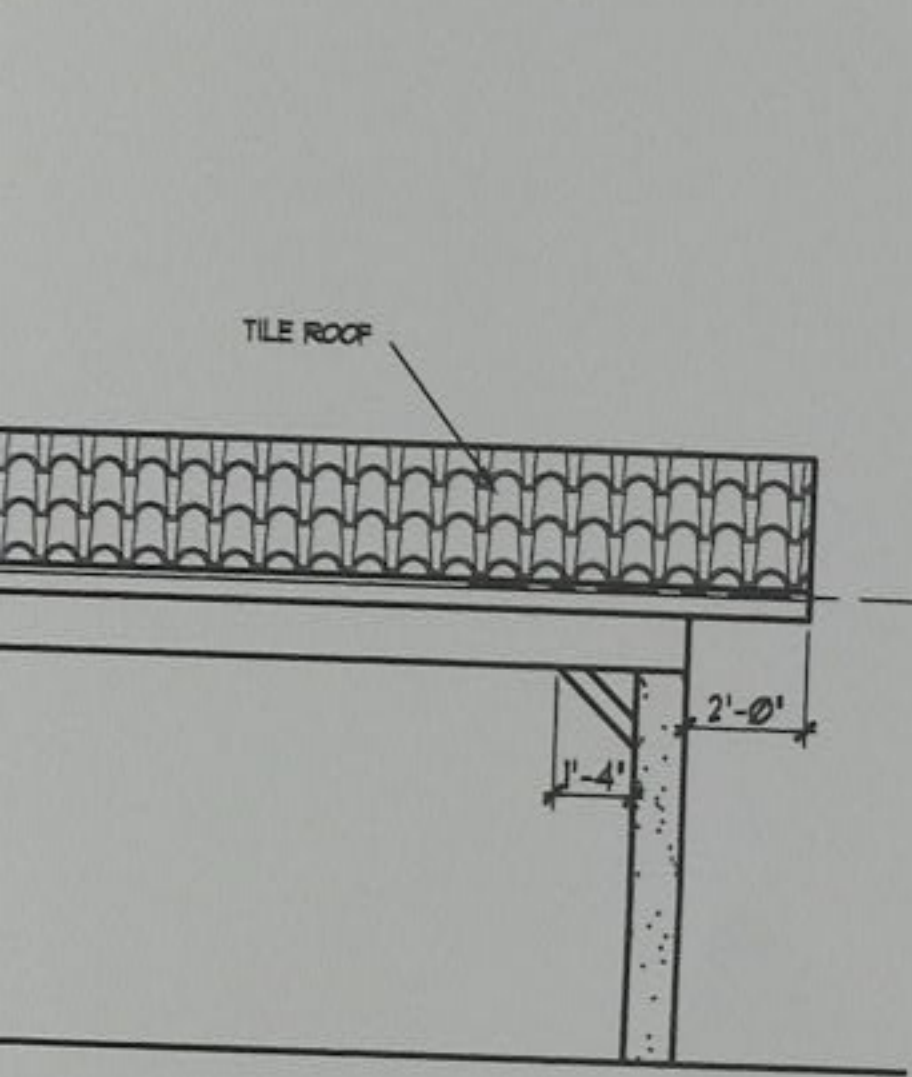
- N.G.S. = NATIONAL GEODETIC SURVEY
- T.B.M. = TEMPORARY BENCH MARK
- 2.0' = EXISTING ELEVATION
- W = WATER METER
- PP = WOOD UTILITY POLE
- ⊕ = SEWER CLEANOUT
- Ⓜ = FIBER OPTICS HAND HOLE
- OHL = OVERHEAD LINE

SCALE: 1" = 20'

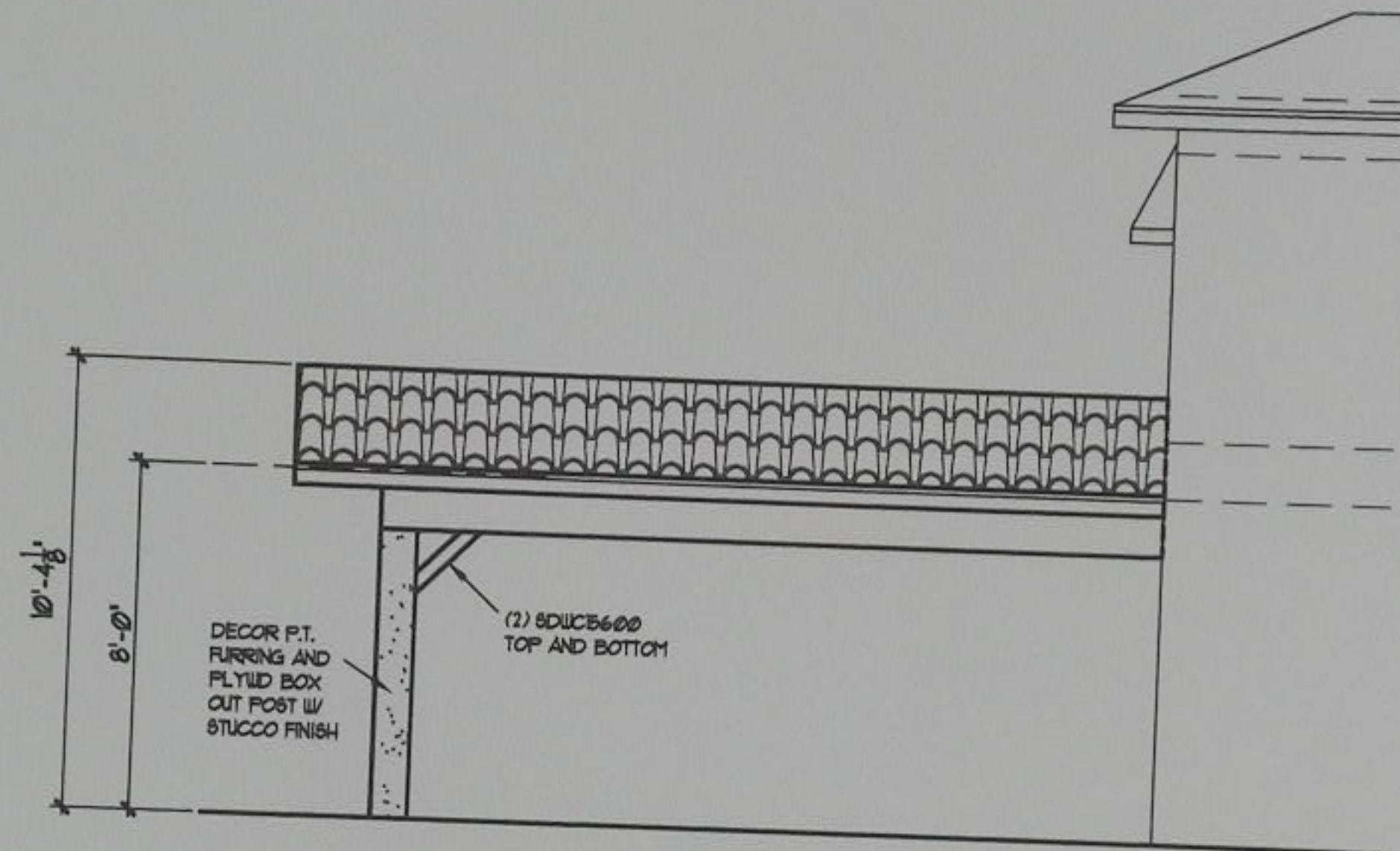


DRIVE
R/W)
LINE
16

26
NE
EET

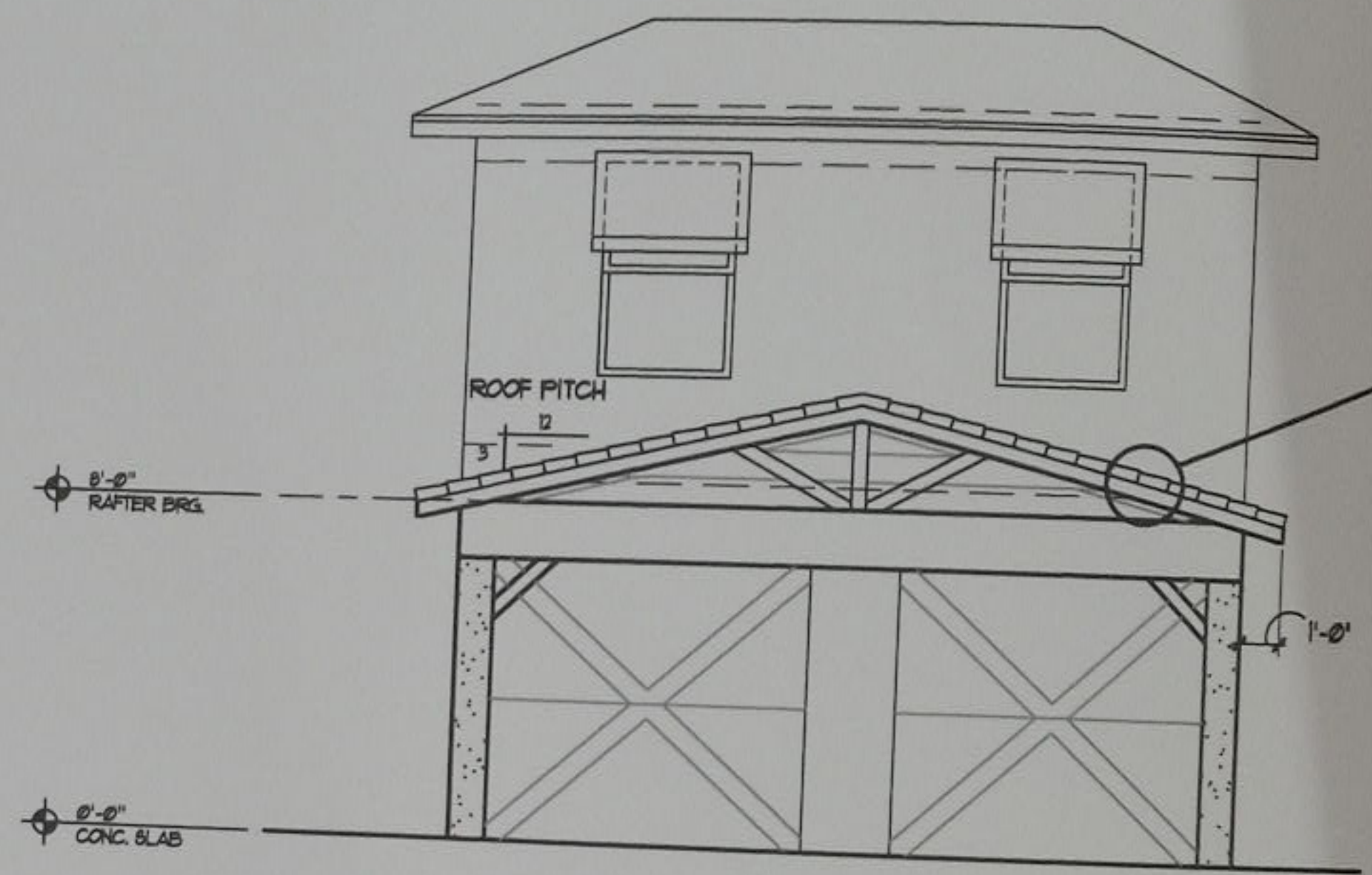


LEVATION



RIGHT ELEVATION

SCALE: 1/4"=1'-0"



FRONT ELEVATION

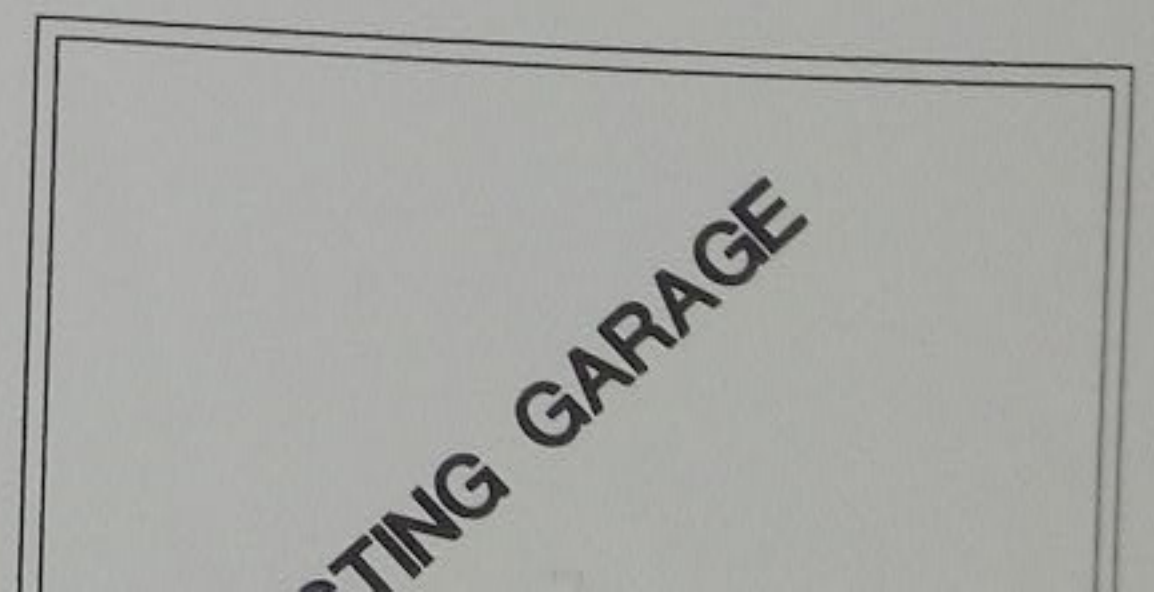
SCALE: 1/4"=1'-0"

SIMPSON RR TYPICAL RIDGE TO RAFTER CONNECTION UNLESS NOTED OTHERWISE
 SIMPSON CS16 OVER TOP OF RIDGE TYPICAL

TYPICAL ROOF CONSTRUCTION:
 TILE OVER 30# SELF-ADHERING POLYMER-BITUMEN

SQ. FT. CALCULATIONS

LIVING	0
LANAI	0
ENTRY	0
CAR PORCH	0







ge on

htness

ge from
urce

enu



image by
ress

image

t Bright

t image
er sour

gs Mer



Image by
ress

Image on

t Brightness

t image from
er source

gs Menu



image by
ress

image on



Image by
ress

Image on

t Brightness

t image from
er source

gs Menu



Image by
ress

Image on

t Brightness

t image from
er source

gs Menu

324 Pedro
~~983~~ 687 + # ~~983~~



Images displayed

Rotate image by 90 degrees

Freeze image on display

Adjust Brightness

Import image from another source

Settings Menu

