

Wellfield Park Croquet

Venice, FL

Lighting System

Pole / Fixture Summary							
Pole ID	Pole Height	Mtg Height	Fixture Qty	Luminaire Type	Avg Load	Max Load	Circuit
C1	70'	70'	3	Green Generation	4.69 kW	5.10 kW	A
P1	70'	70'	4	TLC-LED-1200	4.68 kW	4.68 kW	A
		70'	1	TLC-LED-1500	1.43 kW	1.43 kW	A
P2	70'	70'	5	FUTURE	7.15 kW	7.15 kW	B
		70'	3	TLC-LED-1200	3.51 kW	3.51 kW	A
		70'	2	TLC-LED-1500	2.86 kW	2.86 kW	A
		70'	1	TLC-LED-400	0.40 kW	0.40 kW	A
3			19		24.72 kW	25.13 kW	

Circuit Summary				
Circuit	Description	Avg Load	Max Load	Fixture Qty
A	Croquet Fields 1-4	17.57 kW	17.98 kW	14
B	Croquet Fields 5-7	7.15 kW	7.15 kW	5

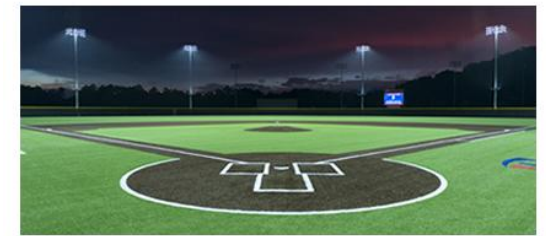
Fixture Type Summary							
Type	Source	Wattage	Lumens	L90	L80	L70	Quantity
TLC-LED-1200	LED 4000K - 70 CRI	1170W	136,000	>120,000	>120,000	>120,000	7
TLC-LED-400	LED 4000K - 70 CRI	400W	46,500	>120,000	>120,000	>120,000	1
TLC-LED-1500	LED 4000K - 70 CRI	1430W	160,000	>120,000	>120,000	>120,000	3

Type	Source	Avg Wattage	Max Wattage	Constant Lumens	Application	Quantity
Green Generation	1500W MZ	1564W	1700W	134,000	100K	3

Light Level Summary

Calculation Grid Summary								
Grid Name	Calculation Metric	Illumination					Circuits	Fixture Qty
		Ave	Min	Max	Max/Min	Ave/Min		
Field 1	Horizontal Illuminance	29.5	19	38	1.96	1.55	A	14
Field 2	Horizontal Illuminance	25.6	20	31	1.60	1.28	A	14
Field 3	Horizontal Illuminance	25.4	19	34	1.75	1.33	A	14
Field 4	Horizontal Illuminance	29.5	18	39	2.19	1.64	A	14

From Hometown to Professional



We Make It Happen.

Not to be reproduced in whole or part without the written consent of Musco Sports Lighting, LLC. ©1981, 2022 Musco Sports Lighting, LLC.

EQUIPMENT LIST FOR AREAS SHOWN								
Pole				Luminaires				
QTY	LOCATION	SIZE	GRADE ELEVATION	MOUNTING HEIGHT	LUMINAIRE TYPE	QTY / POLE	THIS GRID	OTHER GRIDS
1	C1	70'	-	70'	LSG 15MZ	3	3	0
1	P1	70'	-	70'	TLC-LED-1500	1	1	0
				70'	TLC-LED-1200	4	4	0
1	P2	70'	-	70'	TLC-LED-400	1	1	0
				70'	TLC-LED-1500	2	2	0
				70'	TLC-LED-1200	3	3	0
3	TOTALS					14	14	0

Wellfield Park Croquet

Venice, FL

GRID SUMMARY	
Name:	Croquet 1-4
Size:	-372' x 106'
Spacing:	20.0' x 20.0'
Height:	3.0' above grade

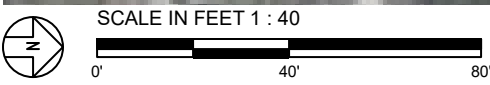
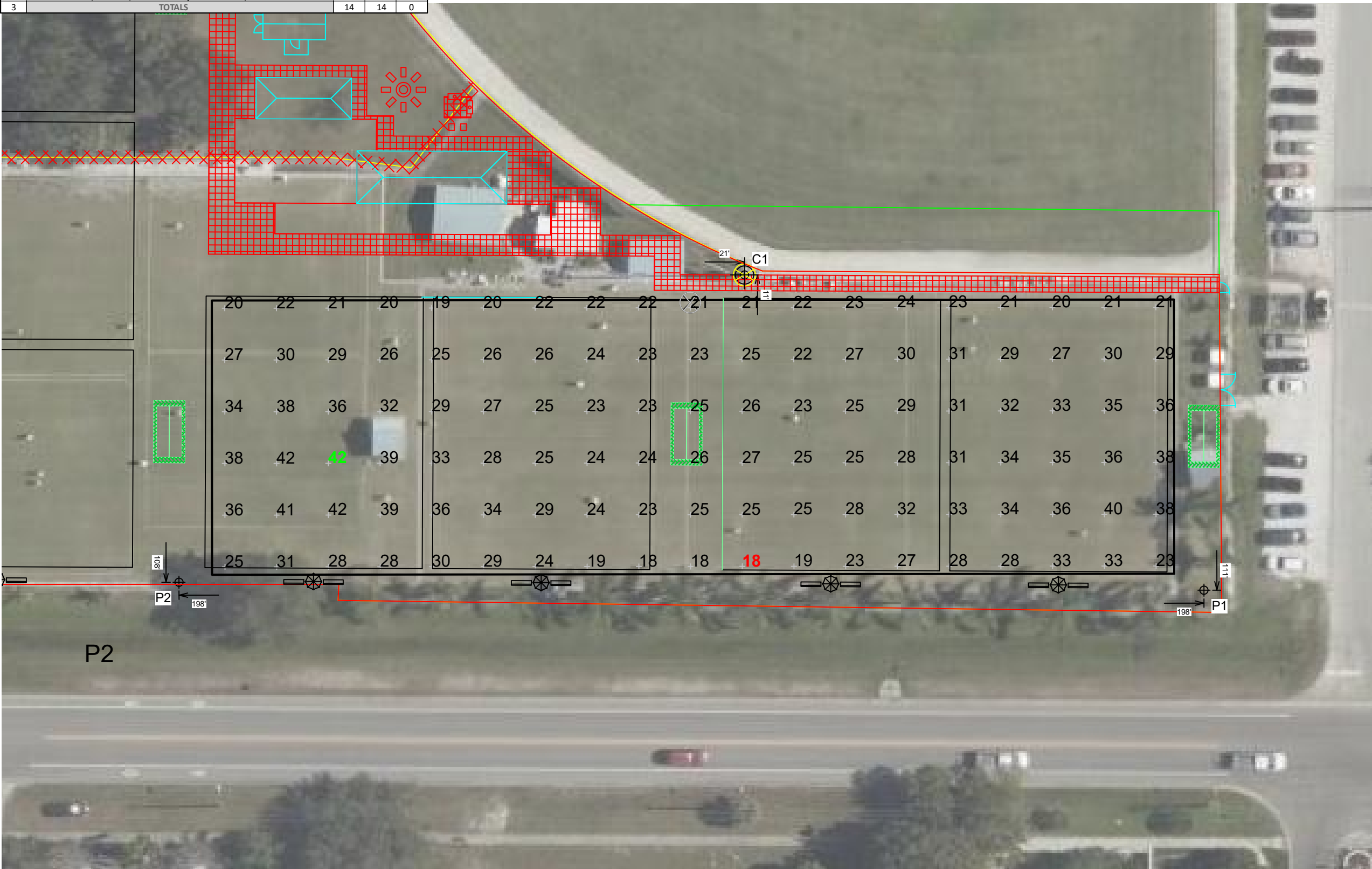
ILLUMINATION SUMMARY	
MAINTAINED HORIZONTAL FOOTCANDLES	
Entire Grid	
Scan Average:	27.88
Maximum:	42
Minimum:	18
Avg / Min:	1.58
Max / Min:	2.41
UG (adjacent pts):	1.66
CU:	0.69
No. of Points:	114
LUMINAIRE INFORMATION	
Applied Circuits:	A
No. of Luminaires:	14
Avg Load:	17.57 kW
Max Load:	17.98 kW

Guaranteed Performance: The ILLUMINATION described above is guaranteed per your Musco Warranty document and includes a 0.95 dirt depreciation factor.

Field Measurements: Individual field measurements may vary from computer-calculated predictions and should be taken in accordance with IESNA RP-6-15.

Electrical System Requirements: Refer to Amperage Draw Chart and/or the "Musco Control System Summary" for electrical sizing.

Installation Requirements: Results assume ± 3% nominal voltage at line side of the driver and structures located within 3 feet (1m) of design locations.



Pole location(s) ⊕ dimensions are relative to 0,0 reference point(s) ⊗



EQUIPMENT LIST FOR AREAS SHOWN								
Pole				Luminaires				
QTY	LOCATION	SIZE	GRADE ELEVATION	MOUNTING HEIGHT	LUMINAIRE TYPE	QTY / POLE	THIS GRID	OTHER GRIDS
1	C1	70'	-	70'	LSG 15MZ	3	3	0
1	P1	70'	-	70'	TLC-LED-1500	1	1	0
				70'	TLC-LED-1200	4	4	0
1	P2	70'	-	70'	TLC-LED-400	1	1	0
				70'	TLC-LED-1500	2	2	0
				70'	TLC-LED-1200	3	3	0
3	TOTALS					14	14	0

Wellfield Park Croquet

Venice, FL

GRID SUMMARY	
Name:	Field 4
Size:	-372' x 106'
Spacing:	20.0' x 20.0'
Height:	0.0' above grade

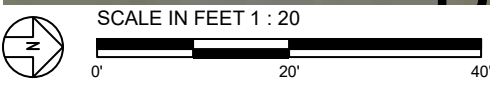
ILLUMINATION SUMMARY	
MAINTAINED HORIZONTAL FOOTCANDLES	
Entire Grid	
Guaranteed Average:	25
Scan Average:	29.51
Maximum:	39
Minimum:	18
Avg / Min:	1.64
Guaranteed Max / Min:	2.5
Max / Min:	2.19
UG (adjacent pts):	1.48
CU:	0.19
No. of Points:	30
LUMINAIRE INFORMATION	
Applied Circuits:	A
No. of Luminaires:	14
Avg Load:	17.57 kW
Max Load:	17.98 kW

Guaranteed Performance: The ILLUMINATION described above is guaranteed per your Musco Warranty document and includes a 0.95 dirt depreciation factor.

Field Measurements: Individual field measurements may vary from computer-calculated predictions and should be taken in accordance with IESNA RP-6-15.

Electrical System Requirements: Refer to Amperage Draw Chart and/or the "Musco Control System Summary" for electrical sizing.

Installation Requirements: Results assume ± 3% nominal voltage at line side of the driver and structures located within 3 feet (1m) of design locations.



Pole location(s) Ⓢ dimensions are relative to 0,0 reference point(s) ⊗



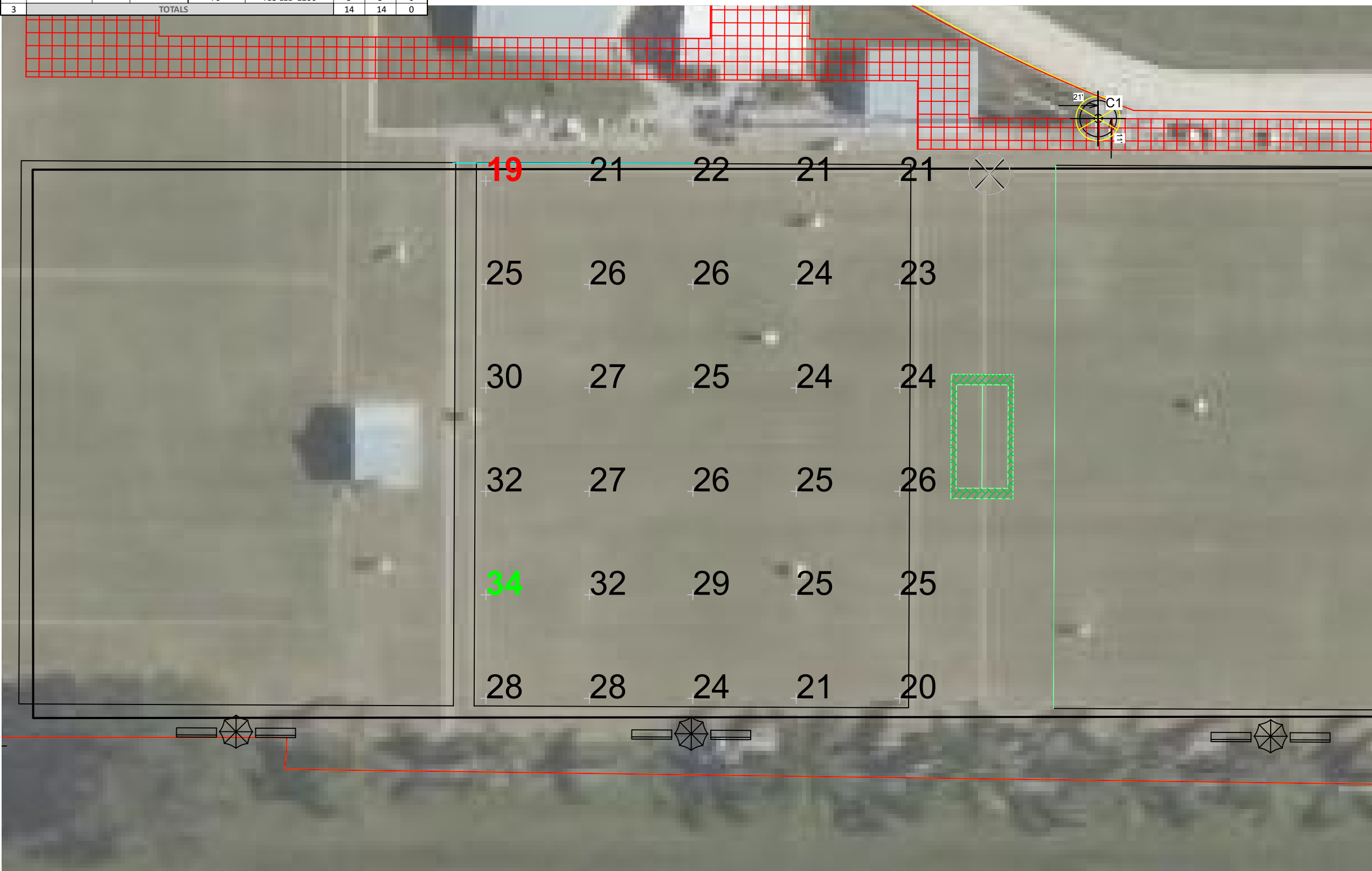
EQUIPMENT LIST FOR AREAS SHOWN								
Pole				Luminaires				
QTY	LOCATION	SIZE	GRADE ELEVATION	MOUNTING HEIGHT	LUMINAIRE TYPE	QTY / POLE	THIS GRID	OTHER GRIDS
1	C1	70'	-	70'	LSG 15MZ	3	3	0
1	P1	70'	-	70'	TLC-LED-1500	1	1	0
				70'	TLC-LED-1200	4	4	0
1	P2	70'	-	70'	TLC-LED-400	1	1	0
				70'	TLC-LED-1500	2	2	0
				70'	TLC-LED-1200	3	3	0
3	TOTALS					14	14	0

Wellfield Park Croquet

Venice, FL

GRID SUMMARY	
Name:	Field 3
Size:	-372' x 106'
Spacing:	20.0' x 20.0'
Height:	0.0' above grade

ILLUMINATION SUMMARY	
MAINTAINED HORIZONTAL FOOTCANDLES	
Entire Grid	
Guaranteed Average:	25
Scan Average:	25.35
Maximum:	34
Minimum:	19
Avg / Min:	1.30
Guaranteed Max / Min:	2.5
Max / Min:	1.75
UG (adjacent pts):	1.29
CU:	0.16
No. of Points:	30
LUMINAIRE INFORMATION	
Applied Circuits:	A
No. of Luminaires:	14
Avg Load:	17.57 kW
Max Load:	17.98 kW

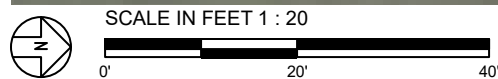


Guaranteed Performance: The ILLUMINATION described above is guaranteed per your Musco Warranty document and includes a 0.95 dirt depreciation factor.

Field Measurements: Individual field measurements may vary from computer-calculated predictions and should be taken in accordance with IESNA RP-6-15.

Electrical System Requirements: Refer to Amperage Draw Chart and/or the "Musco Control System Summary" for electrical sizing.

Installation Requirements: Results assume ± 3% nominal voltage at line side of the driver and structures located within 3 feet (1m) of design locations.



Pole location(s) ⊕ dimensions are relative to 0,0 reference point(s) ⊗



We Make It Happen.

Not to be reproduced in whole or part without the written consent of Musco Sports Lighting, LLC. ©1981, 2022 Musco Sports Lighting, LLC.

EQUIPMENT LIST FOR AREAS SHOWN								
Pole				Luminaires				
QTY	LOCATION	SIZE	GRADE ELEVATION	MOUNTING HEIGHT	LUMINAIRE TYPE	QTY / POLE	THIS GRID	OTHER GRIDS
1	C1	70'	-	70'	LSG 15MZ	3	3	0
1	P1	70'	-	70'	TLC-LED-1500	1	1	0
				70'	TLC-LED-1200	4	4	0
1	P2	70'	-	70'	TLC-LED-400	1	1	0
				70'	TLC-LED-1500	2	2	0
				70'	TLC-LED-1200	3	3	0
3	TOTALS					14	14	0

Wellfield Park Croquet

Venice, FL

GRID SUMMARY	
Name:	Field 2
Size:	-372' x 106'
Spacing:	20.0' x 20.0'
Height:	0.0' above grade

ILLUMINATION SUMMARY	
MAINTAINED HORIZONTAL FOOTCANDLES	
Entire Grid	
Guaranteed Average:	25
Scan Average:	25.56
Maximum:	31
Minimum:	20
Avg / Min:	1.31
Guaranteed Max / Min:	2.5
Max / Min:	1.60
UG (adjacent pts):	1.35
CU:	0.17
No. of Points:	30
LUMINAIRE INFORMATION	
Applied Circuits:	A
No. of Luminaires:	14
Avg Load:	17.57 kW
Max Load:	17.98 kW

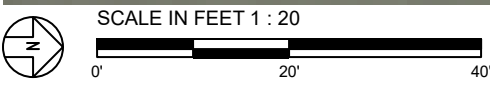


Guaranteed Performance: The ILLUMINATION described above is guaranteed per your Musco Warranty document and includes a 0.95 dirt depreciation factor.

Field Measurements: Individual field measurements may vary from computer-calculated predictions and should be taken in accordance with IESNA RP-6-15.

Electrical System Requirements: Refer to Amperage Draw Chart and/or the "Musco Control System Summary" for electrical sizing.

Installation Requirements: Results assume ± 3% nominal voltage at line side of the driver and structures located within 3 feet (1m) of design locations.



Pole location(s) ⚡ dimensions are relative to 0,0 reference point(s) ⊗



We Make It Happen.

Not to be reproduced in whole or part without the written consent of Musco Sports Lighting, LLC. ©1981, 2022 Musco Sports Lighting, LLC.

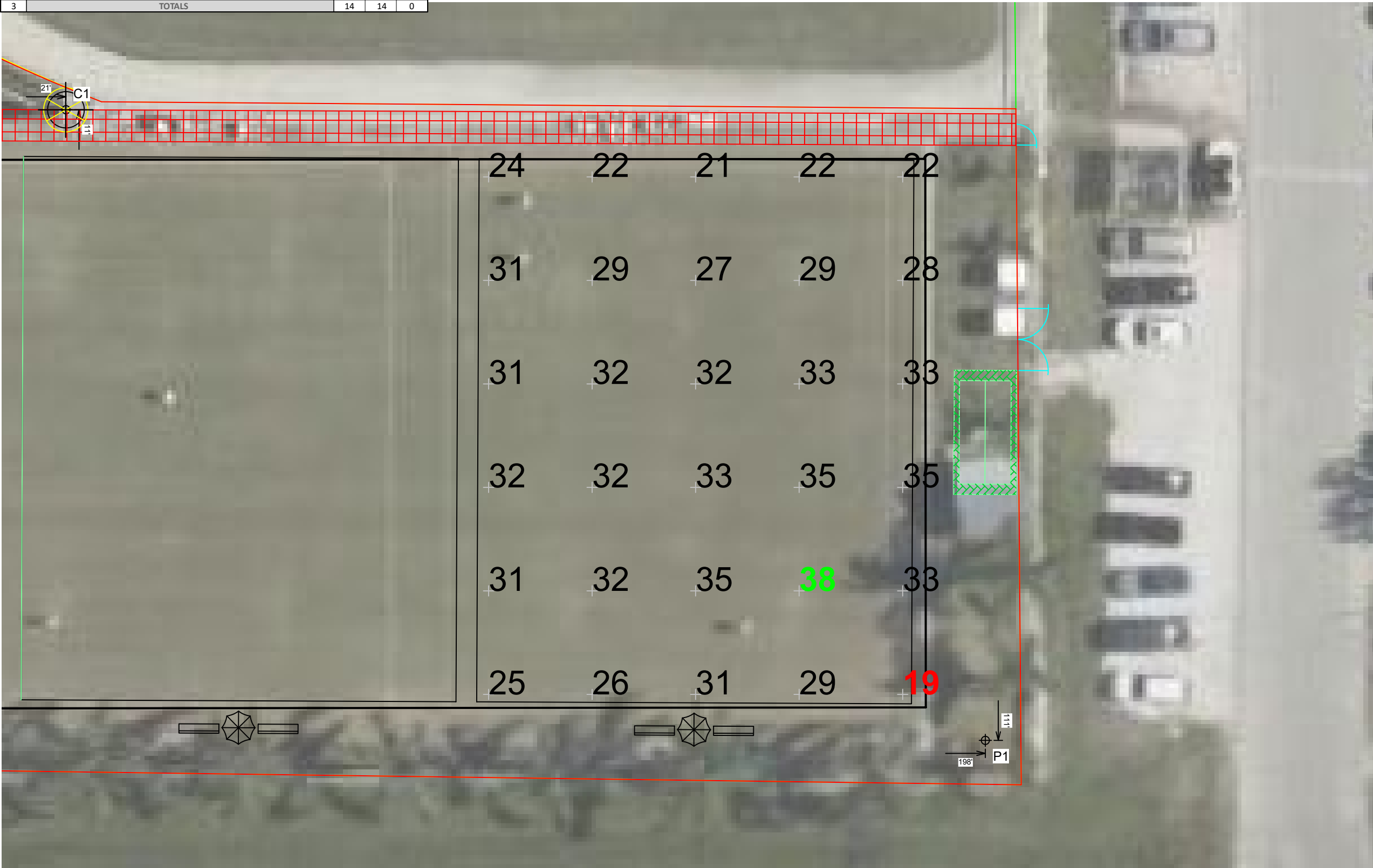
EQUIPMENT LIST FOR AREAS SHOWN								
Pole				Luminaires				
QTY	LOCATION	SIZE	GRADE ELEVATION	MOUNTING HEIGHT	LUMINAIRE TYPE	QTY / POLE	THIS GRID	OTHER GRIDS
1	C1	70'	-	70'	LSG 15MZ	3	3	0
1	P1	70'	-	70'	TLC-LED-1500	1	1	0
				70'	TLC-LED-1200	4	4	0
1	P2	70'	-	70'	TLC-LED-400	1	1	0
				70'	TLC-LED-1500	2	2	0
				70'	TLC-LED-1200	3	3	0
3	TOTALS					14	14	0

Wellfield Park Croquet

Venice, FL

GRID SUMMARY	
Name:	Field 1
Size:	-372' x 106'
Spacing:	20.0' x 20.0'
Height:	0.0' above grade

ILLUMINATION SUMMARY	
MAINTAINED HORIZONTAL FOOTCANDLES	
Entire Grid	
Guaranteed Average:	25
Scan Average:	29.45
Maximum:	38
Minimum:	19
Avg / Min:	1.54
Guaranteed Max / Min:	2.5
Max / Min:	1.96
UG (adjacent pts):	1.73
CU:	0.19
No. of Points:	30
LUMINAIRE INFORMATION	
Applied Circuits:	A
No. of Luminaires:	14
Avg Load:	17.57 kW
Max Load:	17.98 kW

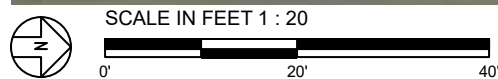


Guaranteed Performance: The ILLUMINATION described above is guaranteed per your Musco Warranty document and includes a 0.95 dirt depreciation factor.

Field Measurements: Individual field measurements may vary from computer-calculated predictions and should be taken in accordance with IESNA RP-6-15.

Electrical System Requirements: Refer to Amperage Draw Chart and/or the "Musco Control System Summary" for electrical sizing.

Installation Requirements: Results assume ± 3% nominal voltage at line side of the driver and structures located within 3 feet (1m) of design locations.



ENGINEERED DESIGN By: Noah Bix · File #210287F_25FC · 22-Nov-22

Pole location(s) ⊕ dimensions are relative to 0,0 reference point(s) ⊗



We Make It Happen.

Not to be reproduced in whole or part without the written consent of Musco Sports Lighting, LLC. ©1981, 2022 Musco Sports Lighting, LLC.

ILLUMINATION SUMMARY

Wellfield Park Croquet

Venice, FL

GRID SUMMARY	
Name:	Spill/Glare - Street Line
Spacing:	30.0'
Height:	3.0' above grade

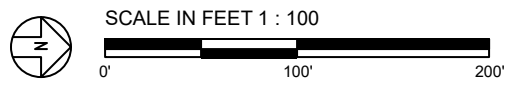
ILLUMINATION SUMMARY	
HORIZONTAL FOOTCANDLES	
Scan Average:	Entire Grid 0.4018
Maximum:	1.61
Minimum:	0.00
No. of Points:	38
LUMINAIRE INFORMATION	
Applied Circuits:	A, B, C
No. of Luminaires:	14
Avg Load:	17.57 kW
Max Load:	17.98 kW

Guaranteed Performance: The ILLUMINATION described above is guaranteed per your Musco Warranty document.

Field Measurements: Individual field measurements may vary from computer-calculated predictions and should be taken in accordance with IESNA RP-6-15.

Electrical System Requirements: Refer to Amperage Draw Chart and/or the "Musco Control System Summary" for electrical sizing.

Installation Requirements: Results assume ± 3% nominal voltage at line side of the driver and structures located within 3 feet (1m) of design locations.



Pole location(s) ⚡ dimensions are relative to 0,0 reference point(s) ⊗



Wellfield Park Croquet

Venice, FL

GRID SUMMARY	
Name:	Spill/Glare - Street Line
Spacing:	30.0'
Height:	3.0' above grade

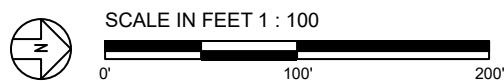
ILLUMINATION SUMMARY	
CANDELA (PER FIXTURE)	
Scan Average:	Entire Grid 19044.3633
Maximum:	104471.77
Minimum:	5252.17
No. of Points:	38
LUMINAIRE INFORMATION	
Applied Circuits:	A, B, C
No. of Luminaires:	14
Avg Load:	17.57 kW
Max Load:	17.98 kW

Guaranteed Performance: The ILLUMINATION described above is guaranteed per your Musco Warranty document.

Field Measurements: Individual field measurements may vary from computer-calculated predictions and should be taken in accordance with IESNA RP-6-15.

Electrical System Requirements: Refer to Amperage Draw Chart and/or the "Musco Control System Summary" for electrical sizing.

Installation Requirements: Results assume ± 3% nominal voltage at line side of the driver and structures located within 3 feet (1m) of design locations.



Pole location(s) ⚡ dimensions are relative to 0,0 reference point(s) ⊗



We Make It Happen.

Not to be reproduced in whole or part without the written consent of Musco Sports Lighting, LLC. ©1981, 2022 Musco Sports Lighting, LLC.

Wellfield Park Croquet

Venice, FL

GRID SUMMARY	
Name:	Spill/Glare - Property Line
Spacing:	30.0'
Height:	3.0' above grade

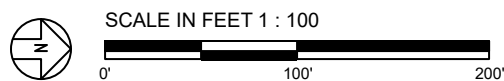
ILLUMINATION SUMMARY	
HORIZONTAL FOOTCANDLES	
Scan Average:	Entire Grid 1.3270
Maximum:	4.59
Minimum:	0.00
No. of Points:	38
LUMINAIRE INFORMATION	
Applied Circuits:	A, B, C
No. of Luminaires:	14
Avg Load:	17.57 kW
Max Load:	17.98 kW

Guaranteed Performance: The ILLUMINATION described above is guaranteed per your Musco Warranty document.

Field Measurements: Individual field measurements may vary from computer-calculated predictions and should be taken in accordance with IESNA RP-6-15.

Electrical System Requirements: Refer to Amperage Draw Chart and/or the "Musco Control System Summary" for electrical sizing.

Installation Requirements: Results assume ± 3% nominal voltage at line side of the driver and structures located within 3 feet (1m) of design locations.



ENGINEERED DESIGN By: Noah Bix · File #210287F_25FC · 22-Nov-22

Pole location(s) ⊕ dimensions are relative to 0,0 reference point(s) ⊗



We Make It Happen.

Not to be reproduced in whole or part without the written consent of Musco Sports Lighting, LLC. ©1981, 2022 Musco Sports Lighting, LLC.

ILLUMINATION SUMMARY

Wellfield Park Croquet

Venice, FL

GRID SUMMARY	
Name:	Spill/Glare - Property Line
Spacing:	30.0'
Height:	3.0' above grade

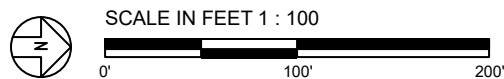
ILLUMINATION SUMMARY	
MAX VERTICAL FOOTCANDLES	
Scan Average:	Entire Grid 2.0331
Maximum:	7.35
Minimum:	0.01
No. of Points:	38
LUMINAIRE INFORMATION	
Applied Circuits:	A, B, C
No. of Luminaires:	14
Avg Load:	17.57 kW
Max Load:	17.98 kW

Guaranteed Performance: The ILLUMINATION described above is guaranteed per your Musco Warranty document.

Field Measurements: Individual field measurements may vary from computer-calculated predictions and should be taken in accordance with IESNA RP-6-15.

Electrical System Requirements: Refer to Amperage Draw Chart and/or the "Musco Control System Summary" for electrical sizing.

Installation Requirements: Results assume ± 3% nominal voltage at line side of the driver and structures located within 3 feet (1m) of design locations.



Pole location(s) ⚡ dimensions are relative to 0,0 reference point(s) ⊗



We Make It Happen.

Not to be reproduced in whole or part without the written consent of Musco Sports Lighting, LLC. ©1981, 2022 Musco Sports Lighting, LLC.

Wellfield Park Croquet

Venice, FL

GRID SUMMARY	
Name:	Spill/Glare - Property Line
Spacing:	30.0'
Height:	3.0' above grade

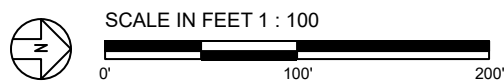
ILLUMINATION SUMMARY	
CANDELA (PER FIXTURE)	
Scan Average:	Entire Grid 27157.0273
Maximum:	135322.83
Minimum:	5226.39
No. of Points:	38
LUMINAIRE INFORMATION	
Applied Circuits:	A, B, C
No. of Luminaires:	14
Avg Load:	17.57 kW
Max Load:	17.98 kW

Guaranteed Performance: The ILLUMINATION described above is guaranteed per your Musco Warranty document.

Field Measurements: Individual field measurements may vary from computer-calculated predictions and should be taken in accordance with IESNA RP-6-15.

Electrical System Requirements: Refer to Amperage Draw Chart and/or the "Musco Control System Summary" for electrical sizing.

Installation Requirements: Results assume ± 3% nominal voltage at line side of the driver and structures located within 3 feet (1m) of design locations.



Pole location(s) ⊕ dimensions are relative to 0,0 reference point(s) ⊗



We Make It Happen.

Not to be reproduced in whole or part without the written consent of Musco Sports Lighting, LLC. ©1981, 2022 Musco Sports Lighting, LLC.

Wellfield Park Croquet

Venice, FL

GRID SUMMARY	
Name:	Spill/Glare - Residential Line
Spacing:	30.0'
Height:	3.0' above grade

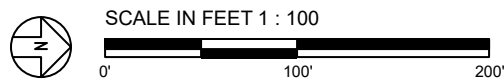
ILLUMINATION SUMMARY	
HORIZONTAL FOOTCANDLES	
Scan Average:	Entire Grid 0.0740
Maximum:	0.37
Minimum:	0.00
No. of Points:	46
LUMINAIRE INFORMATION	
Applied Circuits:	A, B, C
No. of Luminaires:	14
Avg Load:	17.57 kW
Max Load:	17.98 kW

Guaranteed Performance: The ILLUMINATION described above is guaranteed per your Musco Warranty document.

Field Measurements: Individual field measurements may vary from computer-calculated predictions and should be taken in accordance with IESNA RP-6-15.

Electrical System Requirements: Refer to Amperage Draw Chart and/or the "Musco Control System Summary" for electrical sizing.

Installation Requirements: Results assume ± 3% nominal voltage at line side of the driver and structures located within 3 feet (1m) of design locations.



Pole location(s) ⊕ dimensions are relative to 0,0 reference point(s) ⊗



We Make It Happen.

Not to be reproduced in whole or part without the written consent of Musco Sports Lighting, LLC. ©1981, 2022 Musco Sports Lighting, LLC.

Wellfield Park Croquet

Venice, FL

GRID SUMMARY	
Name:	Spill/Glare - Residential Line
Spacing:	30.0'
Height:	3.0' above grade

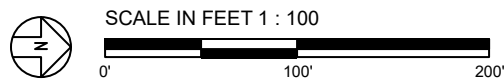
ILLUMINATION SUMMARY	
MAX VERTICAL FOOTCANDLES	
	Entire Grid
Scan Average:	0.2039
Maximum:	1.13
Minimum:	0.01
No. of Points:	46
LUMINAIRE INFORMATION	
Applied Circuits:	A, B, C
No. of Luminaires:	14
Avg Load:	17.57 kW
Max Load:	17.98 kW

Guaranteed Performance: The ILLUMINATION described above is guaranteed per your Musco Warranty document.

Field Measurements: Individual field measurements may vary from computer-calculated predictions and should be taken in accordance with IESNA RP-6-15.

Electrical System Requirements: Refer to Amperage Draw Chart and/or the "Musco Control System Summary" for electrical sizing.

Installation Requirements: Results assume ± 3% nominal voltage at line side of the driver and structures located within 3 feet (1m) of design locations.



ENGINEERED DESIGN By: Noah Bix · File #210287F_25FC · 22-Nov-22

Pole location(s) ⊕ dimensions are relative to 0,0 reference point(s) ⊗



We Make It Happen.

Not to be reproduced in whole or part without the written consent of Musco Sports Lighting, LLC. ©1981, 2022 Musco Sports Lighting, LLC.

ILLUMINATION SUMMARY

Wellfield Park Croquet

Venice, FL

GRID SUMMARY	
Name:	Spill/Glare - Residential Line
Spacing:	30.0'
Height:	3.0' above grade

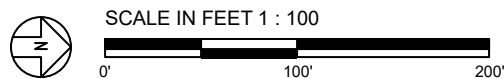
ILLUMINATION SUMMARY	
CANDELA (PER FIXTURE)	
Scan Average:	Entire Grid 10906.5449
Maximum:	52415.56
Minimum:	3624.76
No. of Points:	46
LUMINAIRE INFORMATION	
Applied Circuits:	A, B, C
No. of Luminaires:	14
Avg Load:	17.57 kW
Max Load:	17.98 kW

Guaranteed Performance: The ILLUMINATION described above is guaranteed per your Musco Warranty document.

Field Measurements: Individual field measurements may vary from computer-calculated predictions and should be taken in accordance with IESNA RP-6-15.

Electrical System Requirements: Refer to Amperage Draw Chart and/or the "Musco Control System Summary" for electrical sizing.

Installation Requirements: Results assume ± 3% nominal voltage at line side of the driver and structures located within 3 feet (1m) of design locations.



ENGINEERED DESIGN By: Noah Bix · File #210287F_25FC · 22-Nov-22

Pole location(s) ⚡ dimensions are relative to 0,0 reference point(s) ⊗



We Make It Happen.

Not to be reproduced in whole or part without the written consent of Musco Sports Lighting, LLC. ©1981, 2022 Musco Sports Lighting, LLC.

ILLUMINATION SUMMARY

Wellfield Park Croquet

Venice, FL

EQUIPMENT LAYOUT

INCLUDES:

· Croquet 1-4

Electrical System Requirements: Refer to Amperage Draw Chart and/or the "Musco Control System Summary" for electrical sizing.

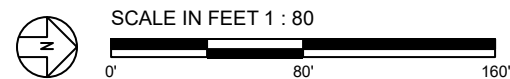
Installation Requirements: Results assume ± 3% nominal voltage at line side of the driver and structures located within 3 feet (1m) of design locations.

EQUIPMENT LIST FOR AREAS SHOWN

QTY	LOCATION	Pole		Luminaires		
		CLASS	GRADE ELEVATION	MOUNTING HEIGHT	LUMINAIRE TYPE	QTY / POLE
1	C1	LSS70D	-	70'	LSG 15M2	3
1	P1	LSS70D	-	70'	TLC-LED-1500	1
				70'	TLC-LED-1200	4
1	P2	LSS70E	-	70'	TLC-LED-400	1
				70'	TLC-LED-1500	2
				70'	TLC-LED-1200	3
3	TOTALS					14

SINGLE LUMINAIRE AMPERAGE DRAW CHART

Ballast Specifications (.90 min power factor)	Line Amperage Per Luminaire (max draw)						
	208 (60)	220 (60)	240 (60)	277 (60)	347 (60)	380 (60)	480 (60)
Single Phase Voltage							
1500 watt MZ	8.6	8.3	7.5	6.5	5.1	4.7	3.7
TLC-LED-1500	8.5	8.1	7.4	6.4	5.1	4.7	3.7
TLC-LED-1200	7.0	6.6	6.1	5.2	4.2	4.0	3.0
TLC-LED-400	2.3	2.2	2.0	1.7	1.4	1.3	1.0



Pole location(s) ⊕ dimensions are relative to 0,0 reference point(s) ⊗



We Make It Happen.

Not to be reproduced in whole or part without the written consent of Musco Sports Lighting, LLC. ©1981, 2022 Musco Sports Lighting, LLC.