

Wildlife Protection Information



An active gopher tortoise burrow photographed on Dec. 7, 2022, on an undeveloped lot at 1056 Harbor Drive South. This lot is exempt from wildlife assessments under current LDRs.



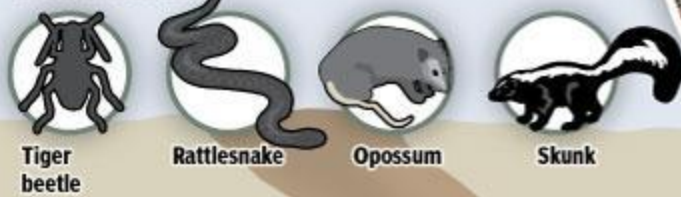
A gopher tortoise at 424 Gulf Drive on the island, whose burrow was paved over by Caithness Construction in 2021.

Florida Native

More than 350 animals and insects use gopher tortoise burrows. Without the threatened reptile, that ecosystem would collapse — which designates the gopher tortoise as a keystone species. A unique relocation program in Florida has worked for about 10 years to keep that from happening.



CASUAL VISITORS



Tiger beetle

Rattlesnake

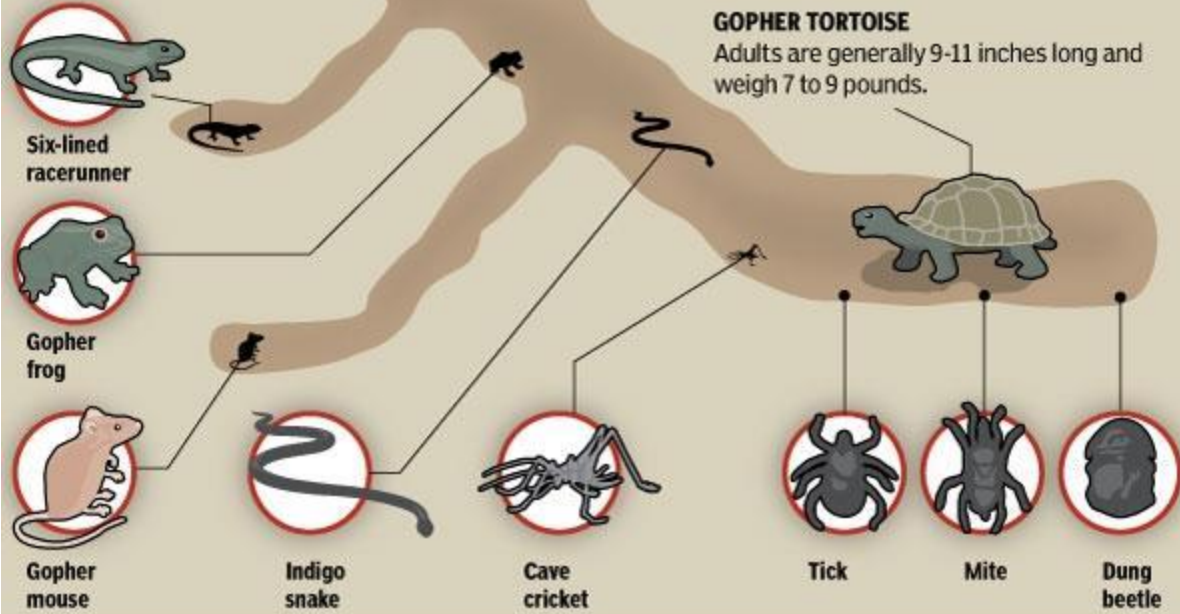
Opossum

Skunk

THE BURROW

Gopher tortoise burrows average between 7 feet deep and 15 feet in length, but may be more than 40 feet long.

DEPENDANT SPECIES



Six-lined racerunner

Gopher frog

Gopher mouse

Indigo snake

Cave cricket

GOPHER TORTOISE

Adults are generally 9-11 inches long and weigh 7 to 9 pounds.

Tick

Mite

Dung beetle