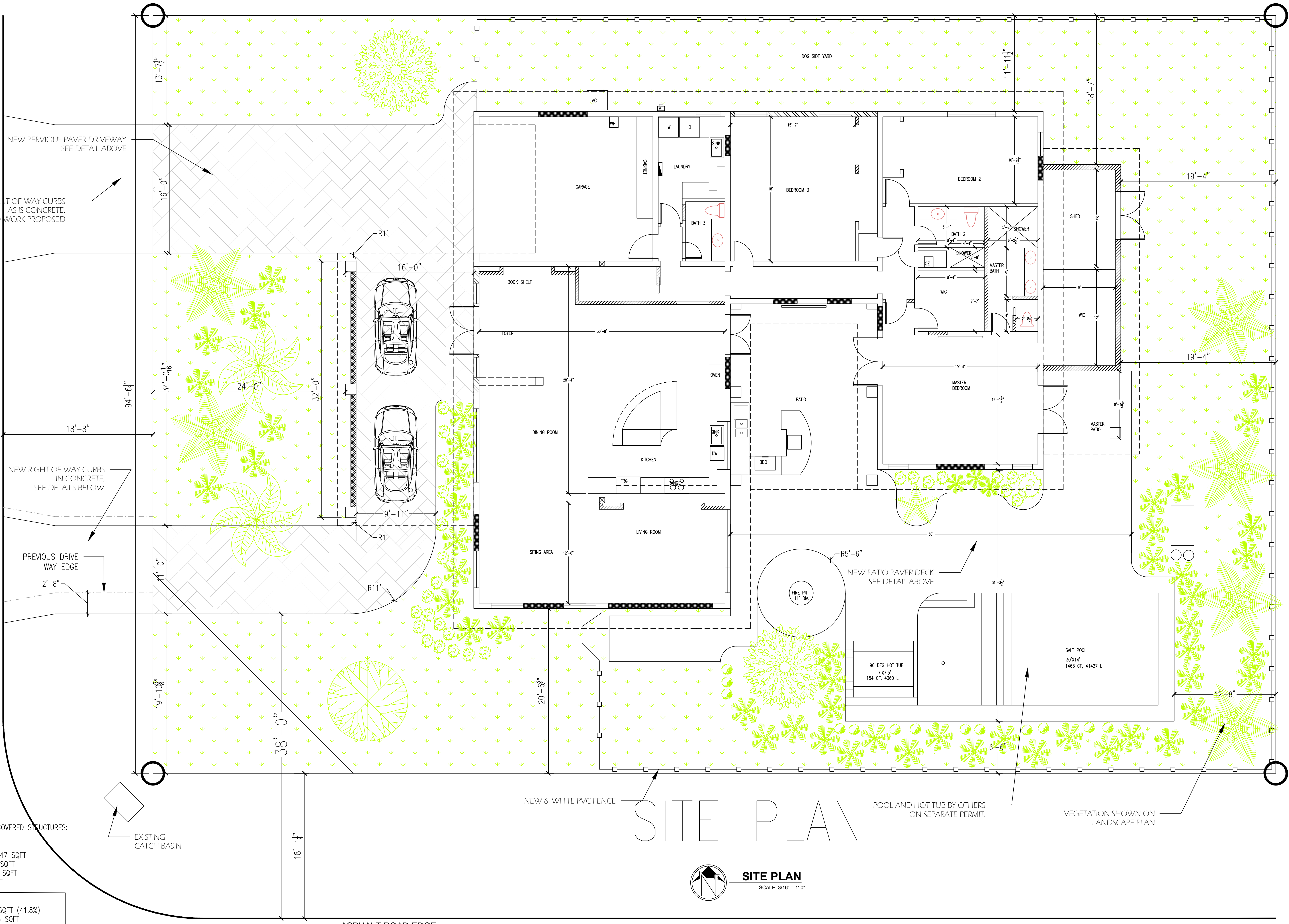


PARK BLVD NORTH



LOT COVERAGE BY COVERED STRUCTURES:  
4,629 SQFT (35.0%)

ORIGINAL HOUSE: 3347 SQFT  
CENTER PATIO: 415 SQFT  
REAR ADDITION: 329 SQFT  
CAR PORT: 538 SQFT

LOT: 13,233 SQFT  
IMPERVIOUS: 5525 SQFT (41.8%)  
HOUSE: 3596 SQFT  
PATIO: 1430 SQFT  
POOL: 499 SQFT

PERVIOUS: 7708 SQFT (58.2%)  
PERVIOUS DRIVEWAY: 1426 SQFT  
GREEN AREA: 6282 SQFT

# SITE PLAN

**SITE PLAN**  
SCALE: 3/16" = 1'-0"

**BRIAN ZAMBRANO**  
ARCHITECT A/R100948  
BRIAN ZAMBRANO AND ASSOCIATES

8360 W OAKLAND PARK BLVD  
STE. 301B SUNRISE, FL 33351  
TEL: (954) 249-3888  
ZAMBRANOASSOCIATES@GMAIL.COM

**DRIVEWAY ALTERATION**  
**EBSARY RESIDENCE**  
**400 PARK BLVD N**  
**VENICE, FL 34285**

REVISIONS - PRINT DATE:

2	
3	
4	
5	
6	

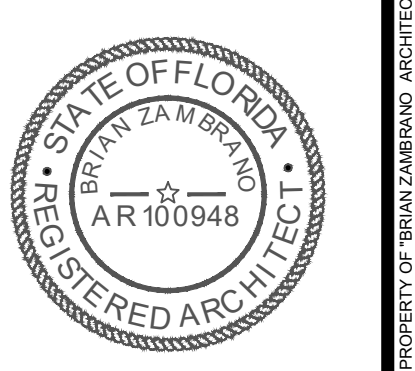
SHEET TITLE:

SITE PLAN

DRAWN BY: BLZ  
CHECKED BY: BLZ

ORIGINAL PRINT DATE:  
2/26/2026

SCALE:  
1/4" = 1'-0"



SHEET  
**SITE**

THIS DRAWING IS THE PROPERTY OF BRIAN ZAMBRANO ARCHITECT AND IS AN INSTRUMENT OF SERVICE. THIS DRAWING IS NOT TO BE REPRODUCED IN WHOLE OR IN PART WITHOUT THE EXPRESSED WRITTEN CONSENT OF BRIAN ZAMBRANO ARCHITECT. NO CHANGES TO THESE PLANS INCLUDING CHANGES TO MATERIALS OR FINISHES WILL VOID REPRESENTATION BY BRIAN ZAMBRANO ARCHITECT. ANY CHANGES MADE WITHOUT CONSENT OF BRIAN ZAMBRANO ARCHITECT WILL VOID REPRESENTATION BY BRIAN ZAMBRANO ARCHITECT.