

EXISTING TREE LEGEND

- OAK
- ROYAL PALM
- SABAL PALM

PROPOSED PLANTING LIST

KEY	BOTANICAL NAME	COMMON NAME	SPECIFICATION	QTY.
LARGE/MEDIUM CANOPY TREES				
MG	MAGNOLIA GRANDIFLORA	SOUTHERN MAGNOLIA	2-1/2" CAL., 8' HT. x 3-4' SPR.	5
ED	ELAEOCARPUS DECIPENS	JAPANESE BLUEBERRY	2-1/2" CAL., 8' HT. x 3-4' SPR.	5
ORNAMENTAL/UNDERSTORY TREES				
IC	ILEX CASSINE	DAHOOH HOLLY	1-1/2" CAL., 8' HT. X 3' SPR.	2
PALMS				
WB	WODYETIA BIFURCATA	FOXTAIL PALM	14-16' HT., SINGLE, HEAVY CALIPER	3
SMALL/MEDIUM SHRUBS				
EL	ERNODEA LITTORALIS	GOLDEN BEACH CREEPER	1 GAL., 10" HT x 12" SPR., 18" O.C., FULL	89
FM	FICUS MICROCARPA 'GREEN ISLAND'	'GREEN ISLAND' FICUS	3 GAL., 20" HT x 18" SPR., 36" O.C., FULL	24
HP	HAMELIA PATENS	FIREBUSH	3 GAL., 20" HT x 18" SPR., 36" O.C., FULL	21
MC	MUHLENBERGIA CAPILLARIS	MUHL Y GRASS	3 GAL., 20" HT x 18" SPR., 36" O.C., FULL	45
LARGE SHRUBS				
CI	CHRYSOBALANUS ICACO 'RED TIP'	'RED TIP' COCOPLUM	3 GAL., 24" HT.x 18" SPR., 36" O.C., FULL	95

PLANTING AREA FOR CANOPY TREES SHALL BE 9' MIN. WIDTH AND 160 S.F. MIN.

LANDSCAPE NOTES:

- ALL PROPOSED PLANT MATERIAL SHALL BE FLORIDA #1 OR BETTER, AS DEFINED IN GRADES AND STANDARDS FOR NURSERY PLANTS, STATE PLANT BOARD OF FLORIDA, LATEST EDITION. ALL PROPOSED TREES SHALL BE NATIVE SPECIES.
- SIZES SHOWN FOR PLANT MATERIAL ON THE PLAN ARE CONSIDERED MINIMUM. PLANT MATERIAL SHALL MEET OR EXCEED THESE MINIMUM REQUIREMENTS FOR BOTH HEIGHT AND SPREAD. ANY OTHER REQUIREMENTS FOR SPECIFIC SHAPE OR EFFECT AS NOTED ON THE PLAN SHALL ALSO BE REQUIRED FOR ACCEPTANCE.
- ALL PLANT BEDS SHALL BE MULCHED WITH 3" DEPTH OF 'FLORIMULCH' OR APPROVED EQUAL.
- TOP 12" OF SOIL WITHIN PLANT BEDS SHALL BE 'FIRST CUT' AND BE SUITABLE FOR PROPOSED PLANT MATERIAL WITH REGARDS TO PH, SOIL TEXTURE, SOIL STRUCTURE, AND SEASONAL HIGH WATER TABLE.
- ALL DELETERIOUS MATERIALS SHALL BE REMOVED FROM LANDSCAPE AREAS AND THEN BACKFILLED WITH SUITABLE SOILS.
- ALL OPEN DISTURBED LANDSCAPE AREAS SHALL BE SODDED WITH ZOYSIA 'EMPIRE'.
- MAINTAIN REQUIRED CLEARANCES AT ALL REQUIRED VISIBILITY TRIANGLES, HYDRANTS, UTILITIES, TRANSFORMERS, ETC.
- NO TREES SHALL BE PLANTED IN WET RETENTION PONDS OR DRAINAGE MAINTENANCE EASEMENTS. TREES AND SHRUBS SHALL BE INSTALLED AT LEAST FIVE FEET AWAY FROM THE FLOW LINE OF A SWALE. A MINIMUM BUFFER WIDTH OF FIVE FEET, OR AT LEAST HALF THE MINIMUM REQUIRED BUFFER WIDTH, SHALL BE PROVIDED OUTSIDE OF ANY REQUIRED EASEMENTS.
- EXISTING PLANT MATERIAL TO REMAIN WHERE POSSIBLE AND SHALL COUNT TOWARDS THE LANDSCAPE REQUIREMENTS IF COMPLIANT. ALL EXISTING TREES SHOWN ON LANDSCAPE PLAN ARE TO REMAIN AND BE BARRICADED DURING CONSTRUCTION PER DETAIL ON SHT L-2.
- A TREE PERMIT IS REQUIRED PRIOR TO CONSTRUCTION. SEE TREE CALCULATIONS BELOW.

IRRIGATION NOTES:

1. ALL PROPOSED TREES AND SHRUBS SHALL BE IRRIGATED BY A 100% AUTOMATIC SYSTEM.
2. IRRIGATION SYSTEM SHALL BE CAPABLE OF SUPPLYING AN AVERAGE OF 1" OF WATER PER WEEK WITHIN WATERING RESTRICTIONS AS APPLICABLE.
3. IRRIGATION SYSTEM SHALL NOT BE INSTALLED THROUGH EXISTING PLANT COMMUNITIES.
4. IRRIGATION SPRINKLER ZONES SHALL BE SEPARATED FOR HIGH AND LOW WATER REQUIREMENTS AND OPERATING ON DIFFERENT WATERING CYCLES.
5. IRRIGATION OVERTHROW TO IMPERVIOUS AND NATURAL AREAS TO BE MINIMIZED.
6. A RAIN SENSOR SHALL BE INSTALLED WITH THE IRRIGATION CONTROL SYSTEM.
7. IRRIGATION PIPING INSTALLED UNDER ROADS AND SIDEWALKS SHALL BE IN SCHEDULE 40 PVC SLEEVING AT 2X THE PIPE SIZE.
8. LANDSCAPE BEDS SHALL BE FULLY IRRIGATED WITH DRIP TUBE TO PROVIDE 100% COVERAGE.
9. IRRIGATION PIPING INSTALLED UNDER ROADS AND SIDEWALKS SHALL BE IN SCHEDULE 40 PVC SLEEVING AT 2X THE PIPE SIZE.
9. PROPOSED SOD WILL REQUIRE 100% IRRIGATION.

VENETIAN GATEWAY DISTRICT

LANDSCAPING POINTS CALCULATIONS:

TYPE	POINTS	QTY.	TOTAL
CANOPY TREE	12 EA.	10	120
ORNAMENTAL TREE	6 EA.	2	12
PALM	4 EA.	3	12
LARGE SHRUB	3 EA.	95	285
SMALL/MEDIUM SHRUB	1 EA.	179	179
TOTAL LANDSCAPE POINTS:			608

EX. PRESERVED TREES: 23 PTS-(1) 10" DBH OAK
28 PTS-(1) 11" DBH OAK
24 PTS-(6) PALMS (@ 4 PTS. EA.)
4 PTS-(1) RELOCATED PALM

PRESERVED TREE PTS. TOTAL: 79 PTS

FOR A 1.39 AC. SITE, 83.4 POINTS ARE REQ'D. AT 60/AC.

PARKING AREA LANDSCAPING CALCULATIONS:

REQ'D.: 20 S.F. OF LANDSCAPING FOR EACH PARKING LOT STALL WITH 0.12 LANDSCAPE POINTS PER S.F. FOR 43 PARKING STALLS, A MIN. OF 880 S.F. OF LANDSCAPING WITH 103.2 LANDSCAPE POINTS IS REQUIRED. PROPOSED: 1,710 S.F. OF PARKING LANDSCAPE AREA IS SHOWN (SHADED GRAY) WITH 208 LANDSCAPE POINTS WHICH EQUATES TO 8.22 PTS PER S.F. OF REQUIRED LANDSCAPE. EACH ISLAND HAS A MIN. OF 6 LANDSCAPE PTS. INCLUDING (1) CANOPY, ORNAMENTAL OR PALM TREE.

TREE MITIGATION & REPLACEMENT

TREE INCH CALCULATIONS:

PROJECT AREA: 1.39 AC.
TREE INCHES REQ'D: 55.6 IN. (@ 40/AC.)

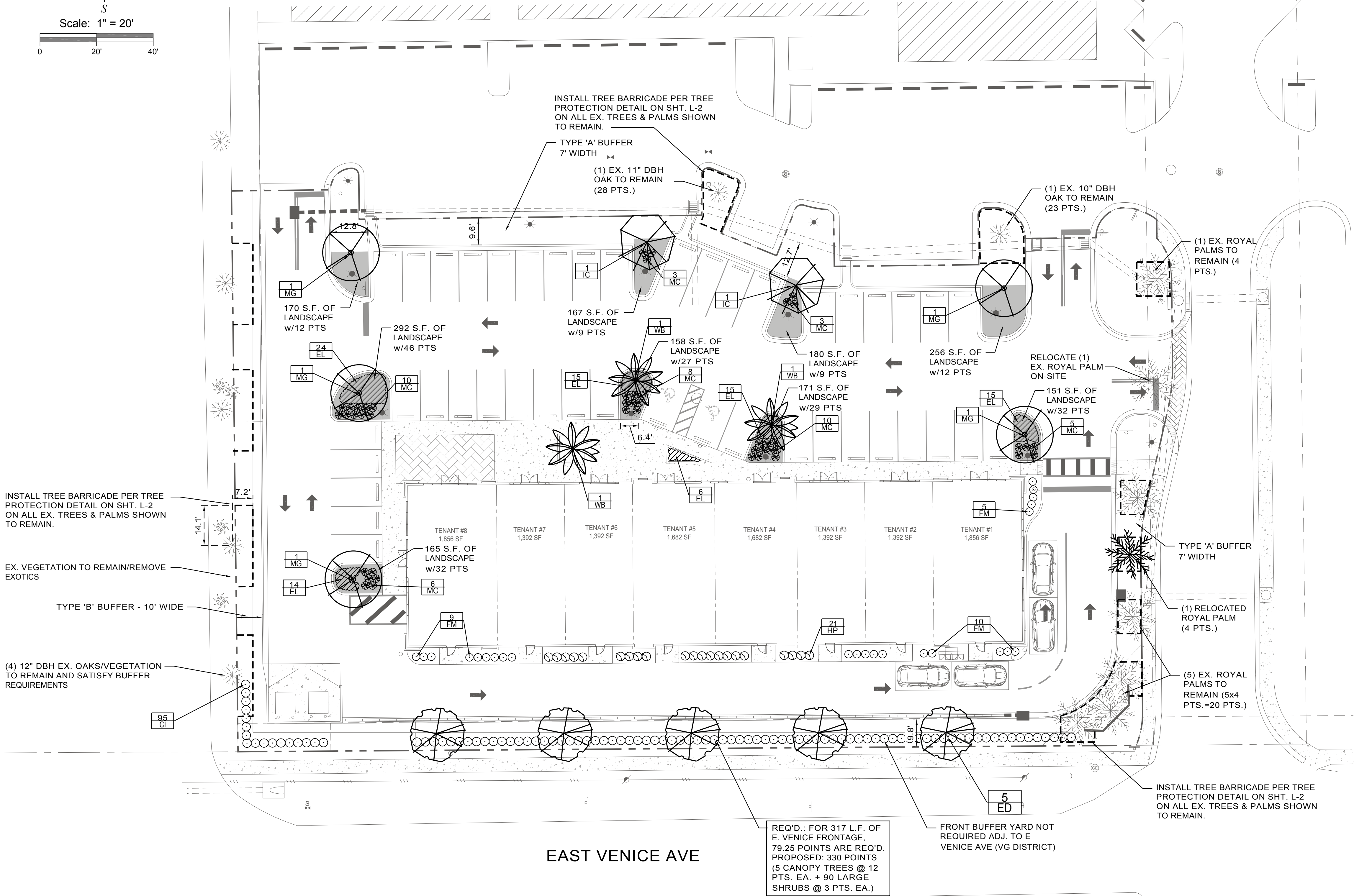
TREE INCHES PRESERVED: (1) 10 IN. DBH OAK
(1) 11 IN. DBH OAK
21 IN. PRESERVED TOTAL

PALM INCHES PRESERVED (7) ROYAL PALMS
& PLANTED: (2) FOXTAIL PALMS
(9)/3 = 3 TREES X 2.5 IN = 7.5 IN. PRESERVED & PLANTED TOTAL

TREE INCHES NEW TREES: 28 IN.=(10) 2-1/2" + (2) 1-1/2" NEW TREES

TREE INCHES PROVIDED PER AC.:40.6 IN. PER AC.

TOTAL TREE IN. PROVIDED: 56.5 IN. (21+7.5+28)



REVISIONS

DATE	DESCRIPTION
03.23.2020	REV. PER CITY REVIEW COMMENTS 03.16.2020
04.01.2020	ADDED TREE BARRICADES PER CITY REVIEW COMMENTS
05.07.2020	REV. PER CITY REVIEW COMMENTS 04.20.20 & 04.24.20
05.13.2020	REV. BLACK OLIVE TREE TO MAGNOLIA PER OWNER
06.05.2020	REV. PER CITY REVIEW COMMENTS 05.19.20 & 05.22.20

PREPARED FOR:

MICHAEL ARANDA
THE GALLERIA SHOPS, LLC.
1222 SW 47TH STREET SUITE 330
CAPE CORAL, FL. 33094

PREPARED BY:

Peter F. Keenan, R.L.A.

Landscape Architect Certified Arborist LEED AP
12260 Longview Lake Cir, Bradenton, Florida 34211
Ph: (941) 356-2746 Email: keenanp33@yahoo.com

Date 01.27.2020

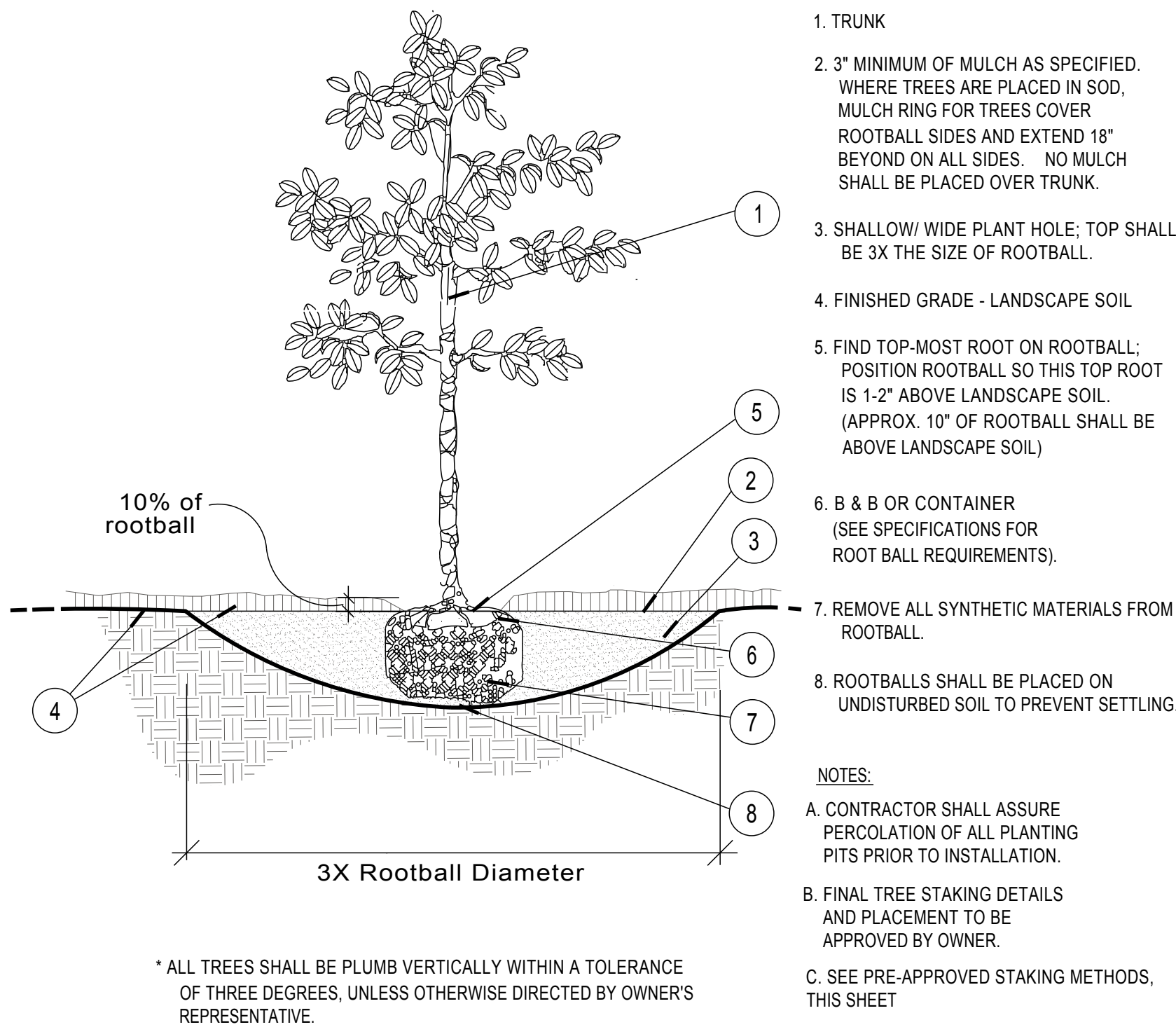
Peter F. Keenan, R.L.A.
FL Registration No.
LA0001755

LANDSCAPE PLAN

1460 E. VENICE AVE.
CITY OF VENICE, FLORIDA

Sheet

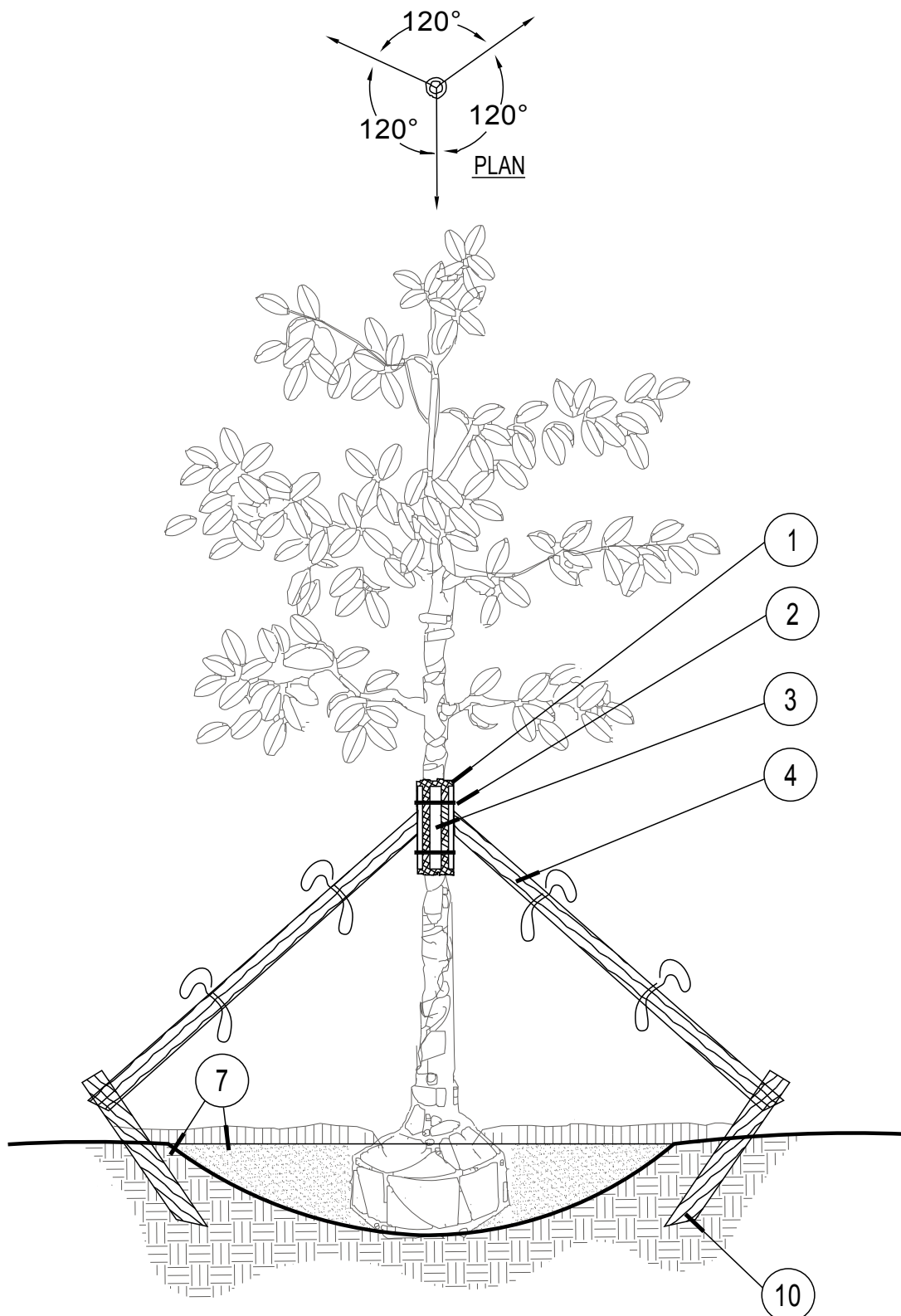
L-1



Tree Planting

SECTION

NTS



Tree Staking

SECTION

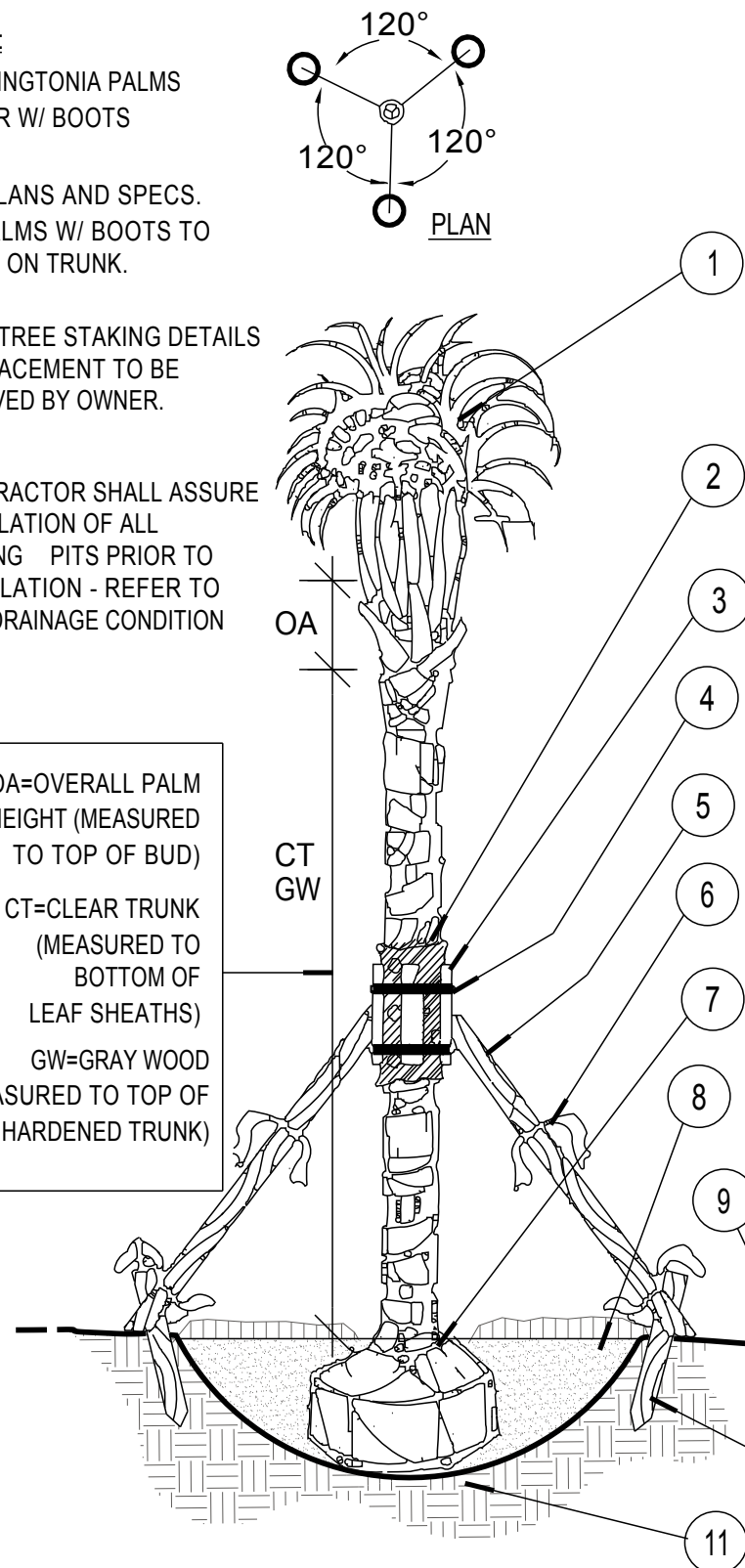
NTS

NOTES:
A. WASHINGTONIA PALMS
SIMILAR W/ BOOTS
INTACT.
B. SEE PLANS AND SPECS.
FOR PALMS W/ BOOTS TO
REMAIN ON TRUNK.

C. FINAL TREE STAKING DETAILS
AND PLACEMENT TO BE
APPROVED BY OWNER.

D. CONTRACTOR SHALL ASSURE
PERCOLATION OF ALL
PLANTING PITS PRIOR TO
INSTALLATION - REFER TO
POOR DRAINAGE CONDITION
DETAIL.

OA=OVERALL PALM
HEIGHT (MEASURED
TO TOP OF BUD)
CT=CLEAR TRUNK
(MEASURED TO
BOTTOM OF
LEAF SHEATHS)
GW=GRAY WOOD
(MEASURED TO TOP OF
HARDENED TRUNK)

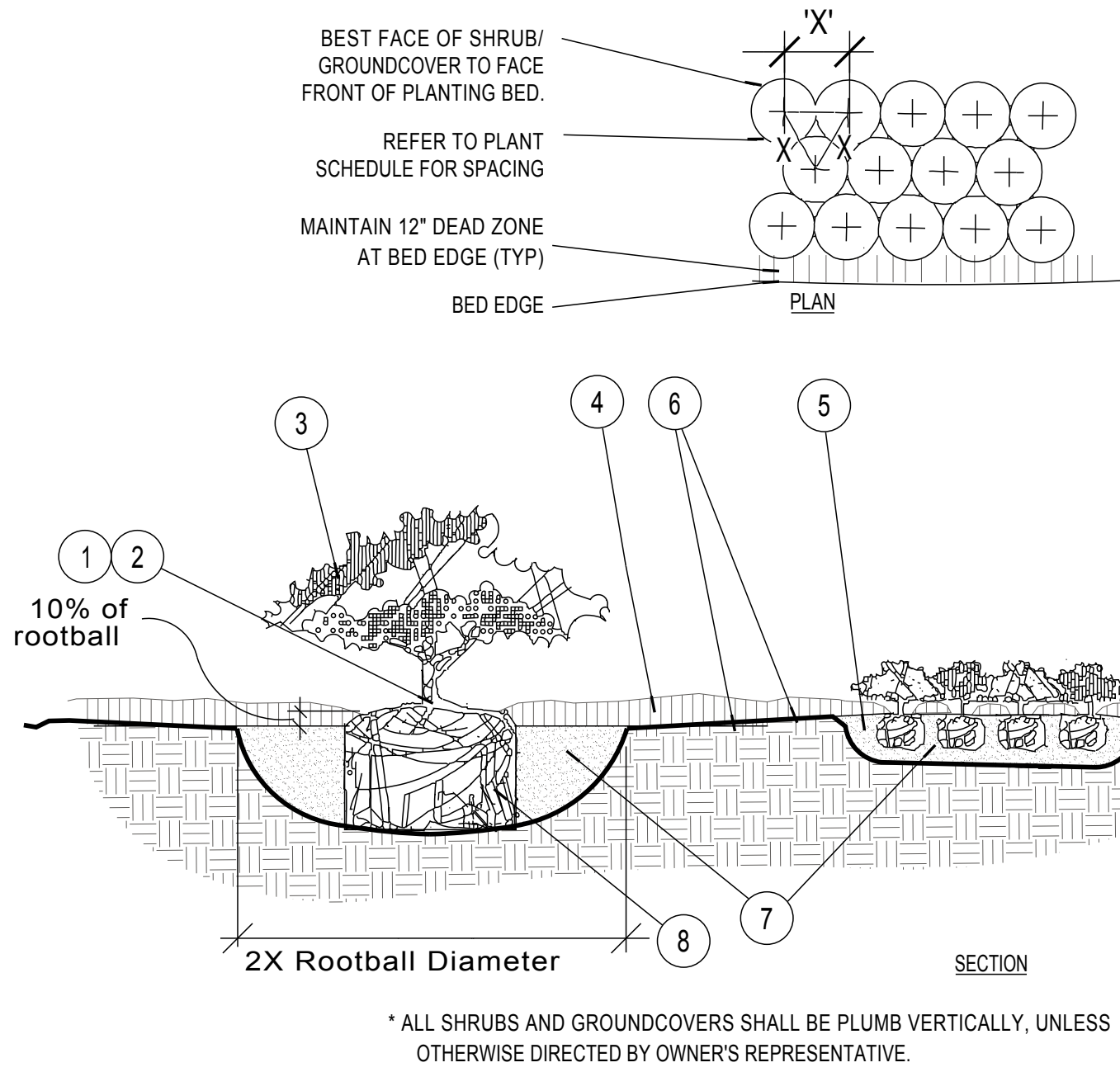


Palm Planting and Staking

SECTION

NTS

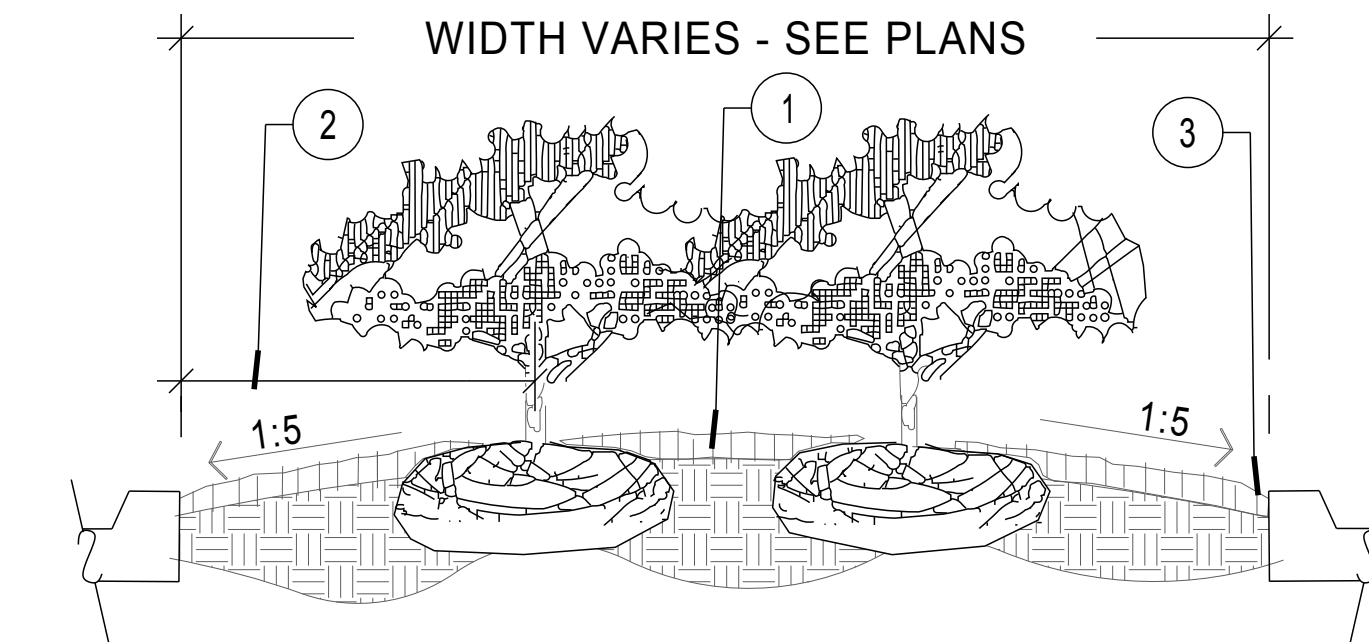
1. MINIMUM OF NINE (9) GOOD PALM FRONDS; PRUNE AND TIE FRONDS WITH HEMP TWINE. SABAL PALMS TO BE SELECTIVELY "HURRICANE CUT", LEAVING ONLY NEWLY-EMERGING GROWTH.
2. 5 LAYERS OF BURLAP TO PROTECT TRUNK.
3. FIVE (5) 18"L. 2X4 WOOD BATTENS. UNTREATED, #2
4. SECURE BATTENS WITH TWO (2) 3/4" CARBON STEEL BANDS TO HOLD BATTENS IN PLACE. NO NAILS SHALL BE DRIVEN INTO PALM. HEIGHT OF BATTENS SHALL BE LOCATED PROPORTIONATELY TO THE HEIGHT OF THE PALM FOR ADEQUATE BRACING.
5. THREE (3) 8'L. 2X4 SUPPORTS. NAIL (DRILL AND NAIL IF NECESSARY) TO BATTENS AND 2" X 4" STAKES. PALMS SHALL BE PLUMB VERTICALLY UNLESS OTHERWISE NOTED.
6. PROVIDE FLAGGING AT MIDPOINT AND BASE OF SUPPORTS.
7. TOP-MOST ROOT SHALL BE VISIBLE AT THE SURFACE OF THE ROOTBALL, SLIGHTLY ABOVE SURROUNDING GRADE.
8. 3" SPECIFIED MULCH
9. FINISH GRADE
10. 24"L. (MIN.) 2X4 P.T. WOOD STAKES. NAIL TO SUPPORT POLES
11. PREPARED PLANTING SOIL AS SPECIFIED



Shrub / Groundcover Planting

PLAN/SECTION

NTS



PLANTER ISLAND NOTES

1. CROWN ISLANDS @ 5:1 SLOPES (OR AS SPECIFIED ON THE LANDSCAPE PLANS).
 2. CLEAR ZONE: 36" MIN. FROM BACK OF CURB TO CENTER OF NEAREST SHRUB. CLEAR ZONE SHALL CONTAIN 3" CONTINUOUS MULCH OR TURF, SEE PLANS.
 3. 1" MIN VERTICAL CLEARANCE, TOP OF CURB TO TOP OF MULCH.
- EXCAVATE CONTINUOUS 36" DEEP (FROM TOP OF CURB) FOR ENTIRE LENGTH AND WIDTH OF ISLAND & BACKFILL WITH APPROVED PLANTING MIX.
 - PROTECT AND RETAIN ALL CURBS AND BASE. COMPACTED SUBGRADE TO REMAIN FOR STRUCTURAL SUPPORT OF CURB SYSTEM (TYP).
 - ALL ISLANDS SHALL UTILIZE POOR DRAINAGE DETAIL WHEN PERCOLATION RATES ARE 2" PER HOUR OR LESS.

Planted Parking Lot Islands / Medians

SECTION

NTS

REVISIONS	
DATE	DESCRIPTION
03.23.2020	REV. PER CITY REVIEW COMMENTS 03.16.2020
04.01.2020	ADDED TREE BARRICADES PER CITY REVIEW COMMENTS
05.07.2020	REV. PER CITY REVIEW COMMENTS 04.20.20 & 04.24.20
05.13.2020	REV. BLACK OLIVE TREE TO MAGNOLIA PER OWNER
06.05.2020	REV. PER CITY REVIEW COMMENTS 05.19.20 & 05.22.20

PREPARED FOR:
MICHAEL ARANDA
THE GALLERIA SHOPS, LLC.
1222 SW 47TH STREET SUITE 330
CAPE CORAL, FL. 33094

PREPARED BY:
Peter F. Keenan, R.L.A.
Landscape Architect Certified Arborist LEED AP
12260 Longview Lake Cir, Bradenton, Florida 34211
Ph: (941) 356-2746 Email: keenanp33@yahoo.com

Date	01.27.2020
Peter F. Keenan, R.L.A. FL Registration No. LA0001755	

LANDSCAPE DETAILS

1460 E. VENICE AVE.
CITY OF VENICE, FLORIDA

Sheet

L-2