

N. AUBURN ROAD
(LOCAL COUNTY MAINTAINED ROADWAY)

DRAINAGE
EASEMENT

PROJECT
BOUNDARY

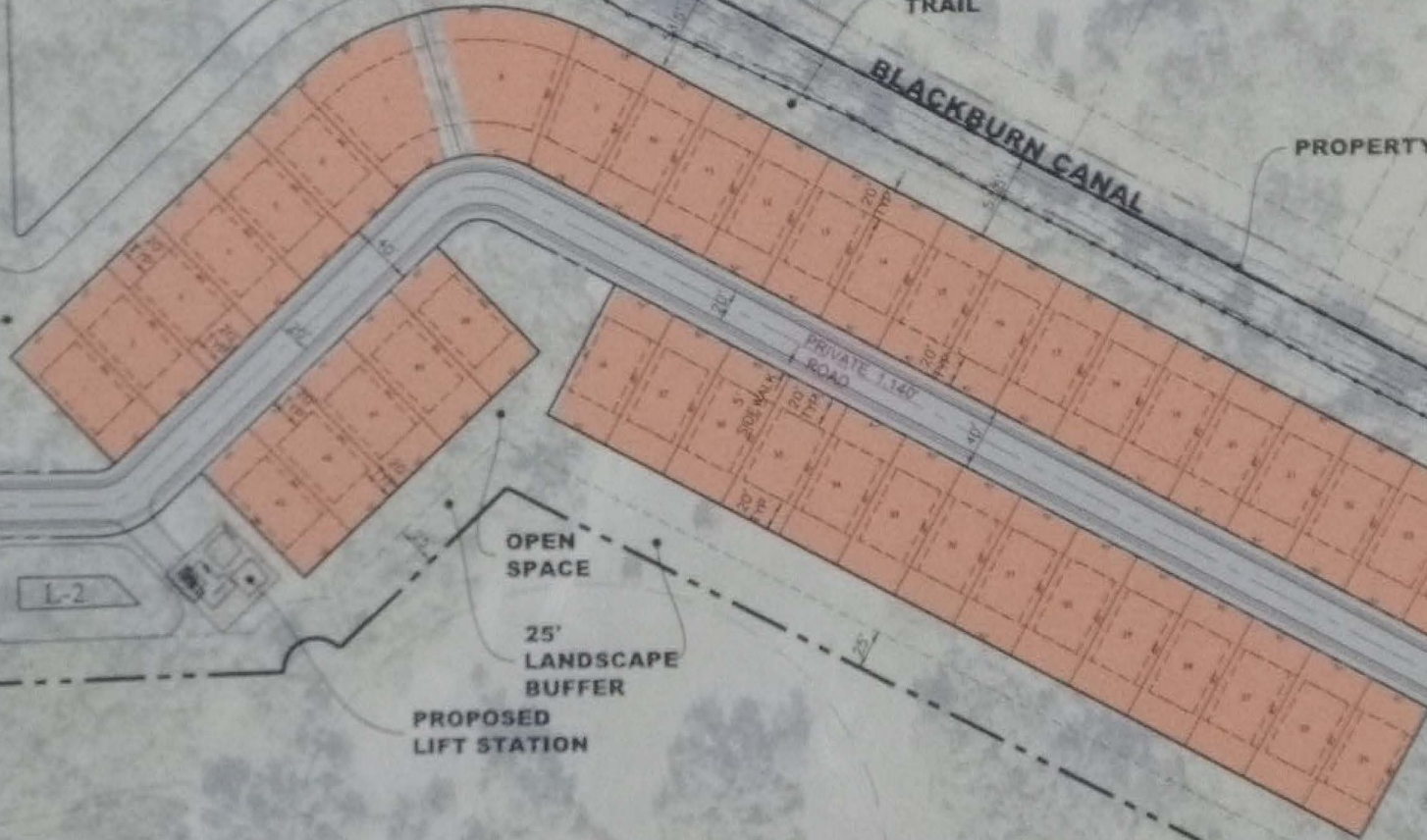
VENICE ACRES
ZONED: RE-2
PLU: LOW DENSITY RESIDENTIAL (12 DU/AC)
SINGLE FAMILY RESIDENTIAL

L-1

8' WALKING
TRAIL

BLACKBURN CANAL

PROPERTY



OPEN
SPACE

25'
LANDSCAPE
BUFFER

PROPOSED
LIFT STATION

PRIVATE 1.140
ROAD

TOWER

TOWER

PID# 0413050001
ZONED: OUE

PLU: MEDIUM DENSITY RESIDENTIAL (2 AND 5 DU/AC)

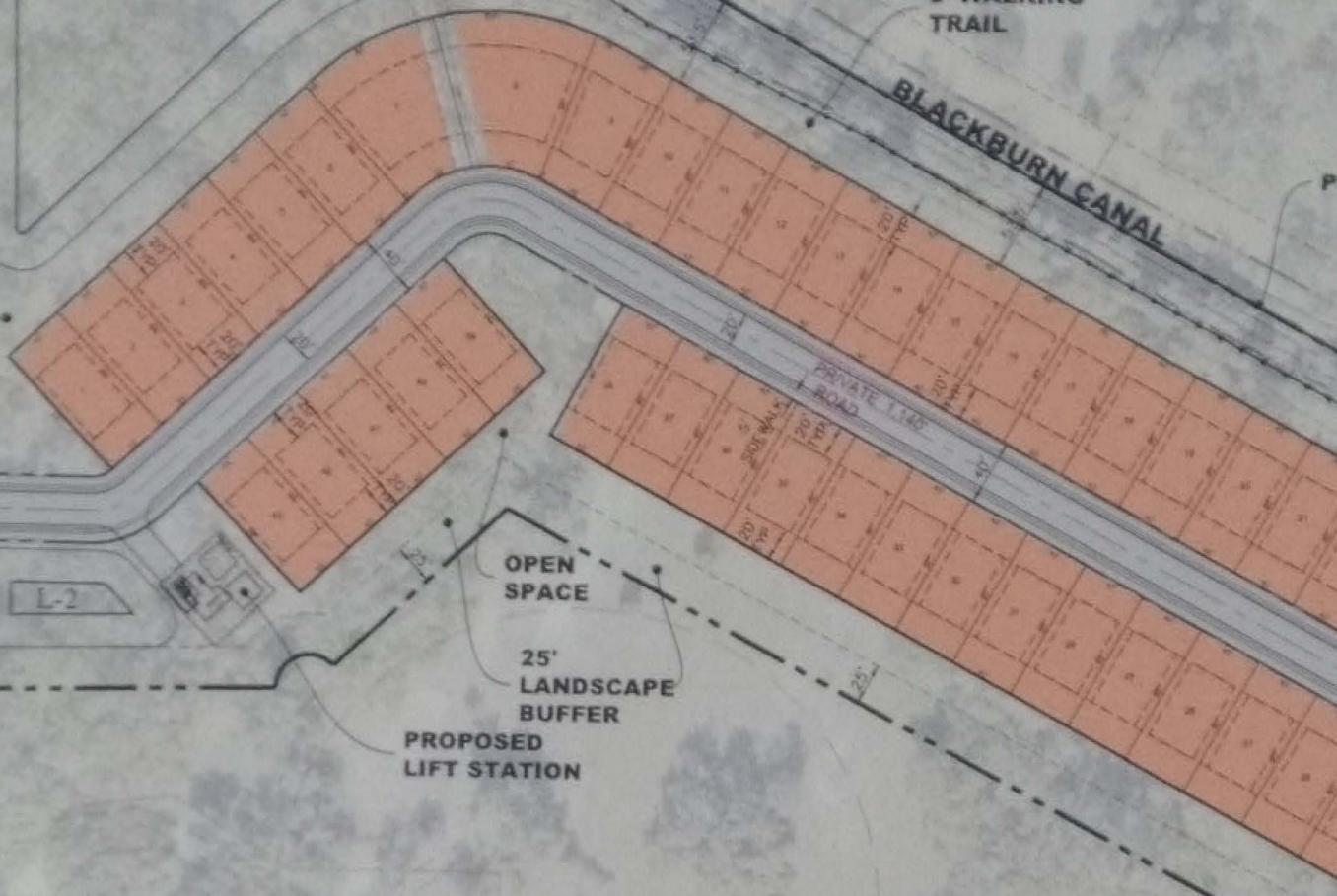
N. AUBURN ROAD
(LOCAL COUNTY MAINTAIN)

ANCE
ENT
IGN

ANCE
JN CT.

8' WALKING TRAIL

BLACKBURN CANAL



OPEN SPACE
25' LANDSCAPE BUFFER
PROPOSED LIFT STATION

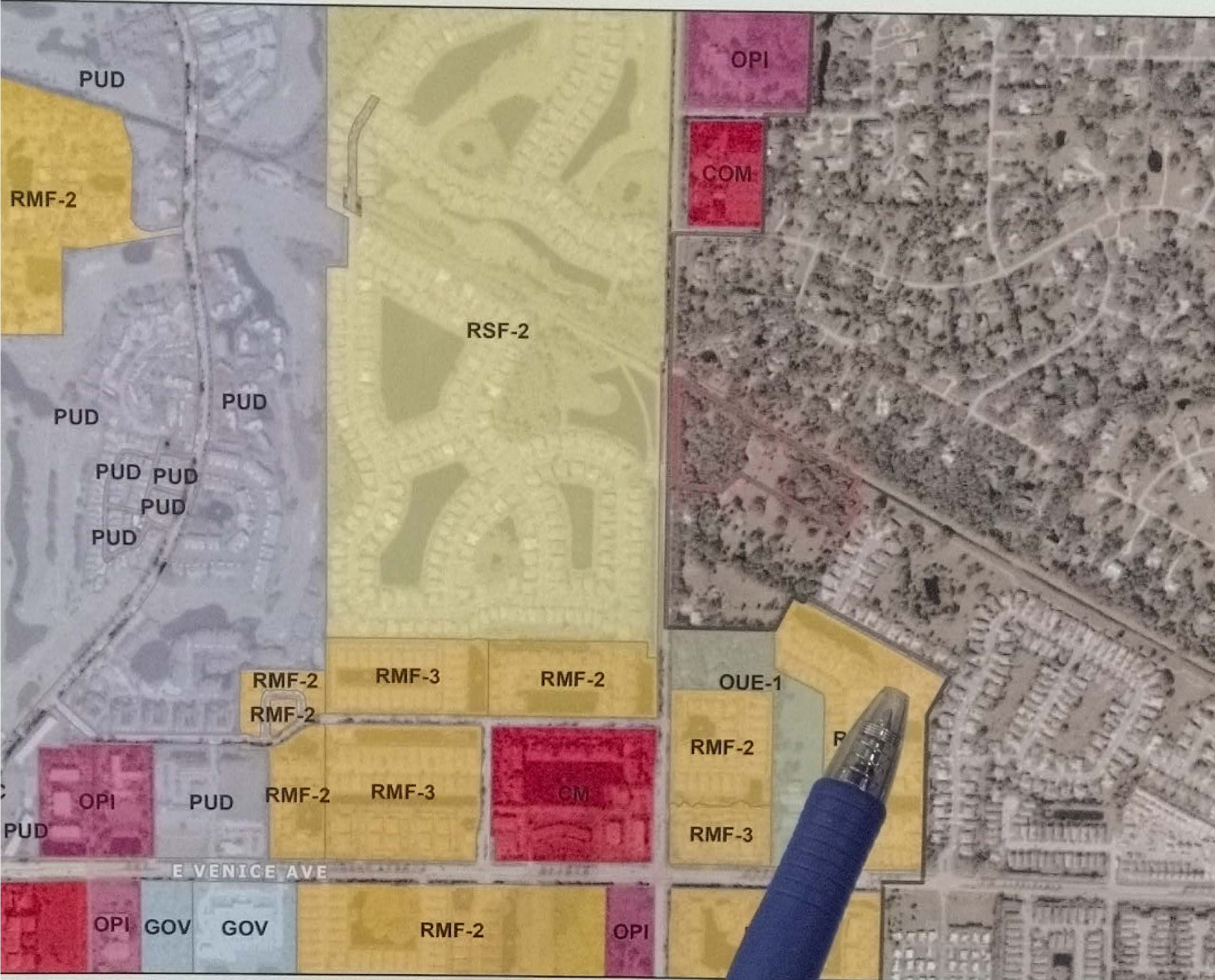
TOWER

TOWER

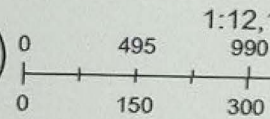
PID#: 0413056001
ZONED: OUE
FLU: MODERATE DENSITY RESIDENTIAL (>2AND<5 DU/AC)
OWNER: HEARTMEDIA ENTERTAINMENT INC.
2050 PLAN USE: URBAN/SUBURBAN

167.3'

Sarasota County Property Appraiser

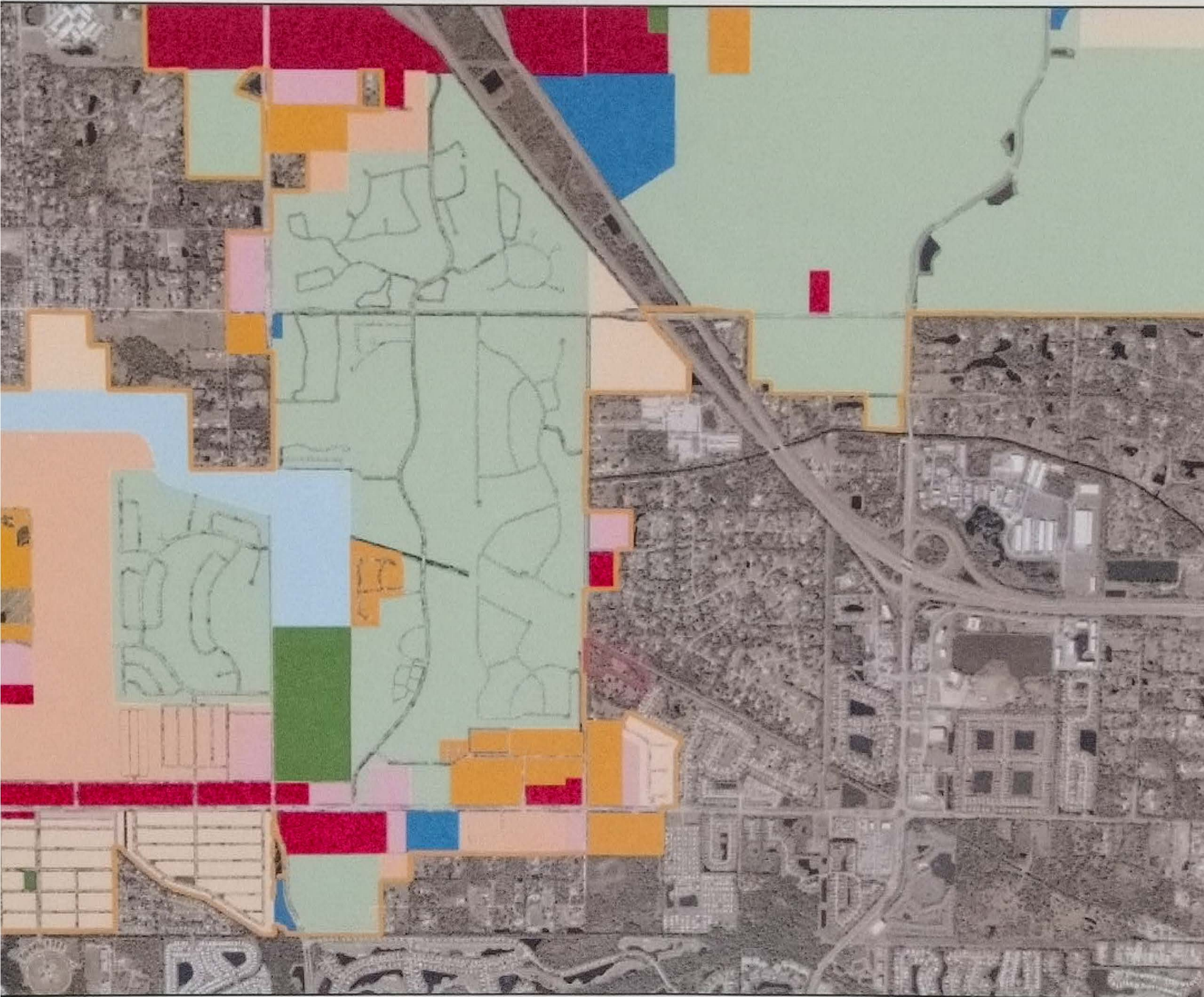


0:00:26 AM



State of Florida, Vantor

ArcGIS Web Map



ed Use Seaboard Open Space Functional Institutional Professional High Density Residential
2025 Imagery

