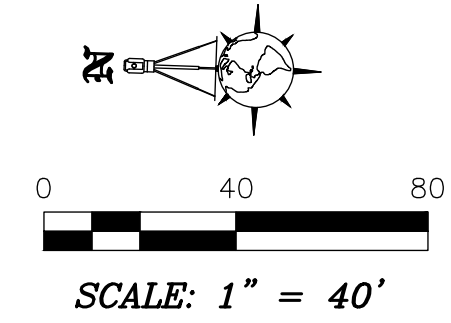
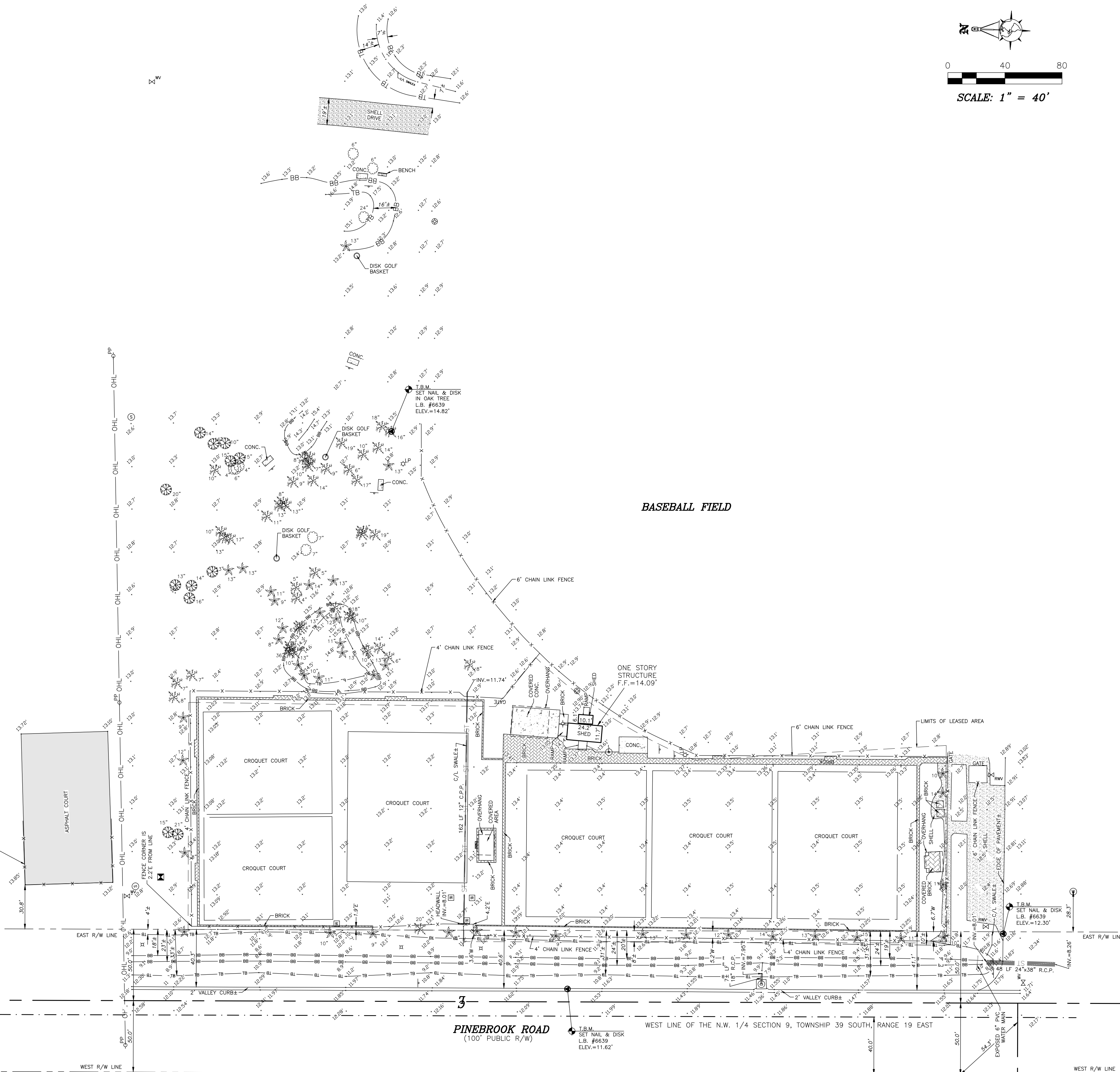




LOCATION MAP
NOT TO SCALE



- LEGEND**
- (P) = PLAT DIMENSION
 - (M) = MEASURED DIMENSION
 - (C) = CALCULATED DIMENSION
 - (D) = DEEDED DIMENSION
 - (R) = RECORDED DIMENSION
 - U. & D. = UTILITY & DRAINAGE
 - L.S. = LICENSED SURVEYOR BUSINESS
 - L.S. = LAND SURVEYOR
 - R/W = RIGHT-OF-WAY
 - C/L = CENTER LINE
 - N.A.D. = NORTH AMERICAN DATUM
 - T.B.M. = TEMPORARY BENCH MARK
 - F.F. = FINISHED FLOOR
 - E.L. = ELEVATION
 - IN.V. = INVERT ELEVATION
 - (TYP) = TYPICAL
 - CONC. = CONCRETE
 - ID. = IDENTIFICATION
 - R.C.P. = REINFORCED CONCRETE PIPE
 - C.P.P. = CORRUGATED PLASTIC PIPE
 - ± = ± EXISTING ELEVATION
 - = PALM TREE (SIZE NOTED)
 - = PINE TREE (SIZE NOTED)
 - = OAK TREE (SIZE NOTED)
 - = ORNAMENTAL TREE (SIZE NOTED)
 - ⊙ = NAIL & DISK SET (L.B. #6639)
 - ⊙ = WATER GATE VALVE
 - ⊙ = BACKFLOW PREVENTER
 - ⊙ = WOOD UTILITY POLE
 - ⊙ = LIGHT POLE
 - ⊙ = SEWER MANHOLE
 - ⊙ = RECLAIMED WATER GATE VALVE
 - ⊙ = GAS MARKER
 - ⊙ = STORM MANHOLE
 - ⊙ = ELECTRIC TRANSFORMER
 - ⊙ = SIGN
 - ⊙ = MONITOR WELL
 - = OVERHEAD LINE
 - = STORM PIPE
 - = TOP OF BANK ±
 - = BOTTOM OF BANK ±

TREE NOTE
TREE SPECIES INDICATED HEREON WERE IDENTIFIED TO THE BEST OF THIS FIRM'S ABILITY. A PROFESSIONAL ARBORIST SHOULD BE CONSULTED FOR EXACT TREE SPECIES IDENTIFICATION AND CONDITION.

TOPOGRAPHIC SURVEY OF
A PORTION OF WELLFIELD PARK
CITY OF VENICE, FLORIDA

ELEVATION NOTE
ALL ELEVATIONS SHOWN HEREON ARE BASED ON THE N.A.V.D. 1988 VERTICAL DATUM, UNLESS OTHERWISE SPECIFIED.
ELEVATIONS SHOWN HEREON ARE BASED ON THE FLORIDA CUSTOM GEOD (FPFNG0168) AND WERE ESTABLISHED BY USING THE FLORIDA PERMANENT REFERENCE NETWORK WITH REAL TIME KINEMATIC GPS.

SURVEYOR'S NOTES
DESCRIPTION FURNISHED BY CLIENT.
THIS IS NOT A BOUNDARY SURVEY.
NO UNDERGROUND INSTALLATIONS OR IMPROVEMENTS HAVE BEEN LOCATED EXCEPT AS NOTED.
BEARINGS SHOWN HEREON ARE BASED ON GRID NORTH AND COORDINATES SHOWN HEREON ARE BASED ON FLORIDA STATE PLANE COORDINATE SYSTEM, WEST ZONE AS REFERENCED TO NAD83-(2011)-(SP04 2010.0000) AND WAS LOCATED USING THE FLORIDA PERMANENT REFERENCE NETWORK WITH REAL TIME KINEMATIC GPS.
SYMBOL CHARACTERS AND OR POSITIONS MAY NOT BE DEPICTED TO SCALE FOR CLARIFICATION PURPOSES.

<p>CERTIFIED TO: DNK ASSOCIATES</p>	<p>FILE NO. : 22-02-30</p>	<p>DATE(S) OF FIELD SURVEY: 3/11/2022, 6/20/2022</p>	<p>FIELD BOOK(S): 938</p>	<p>PAGE(S): 66</p>	<p>DRAWN BY: D.J.S.</p>	<p>CHECKED BY: B.G.R.</p>
	<p>SPECIFIC PURPOSE OF SURVEY: A PORTION OF WELLFIELD PARK, CITY OF VENICE, FLORIDA</p>	<p>SECTION: 09 TOWNSHIP, 39 S. RANGE, 19 E.</p>	<p>DATE: 6/20/22</p>	<p>REVISION DESCRIPTION: UPDATE TOPO & TREES TO NORTH</p>	<p>INITIALS:</p>	<p>DATE:</p>

6/27/22: CLIENT REVIEW
 B. GREGORY NETH
 FLORIDA SURVEYOR & MAPPER REG. #4228
 PRINTED COPIES OF THIS DOCUMENT ARE NOT VALID WITHOUT THE ORIGINAL SIGNATURE AND SEAL OF A FLORIDA LICENSED SURVEYOR.
 ELECTRONIC COPIES OF THIS DOCUMENT ARE ONLY VALID IF THE DIGITAL SIGNATURE AND SEAL ARE VERIFIED.
 LICENSED SURVEYOR BUSINESS NO. 6639
 BENNETT-PANFILL, INC.
 742 SHAMROCK BLVD.
 VENICE, FLORIDA 33593
 WWW.BPSURVEYING.COM

SHEET
1 OF 1

THIS SURVEY IS PROTECTED BY COPYRIGHT AND IS CONFIDENTIAL TO THE CLIENT LISTED HEREON, AND ONLY FOR THE PARTICULAR TRANSACTION. THE SURVEYOR EXPRESSLY DISCLAIMS ANY CERTIFICATION TO THIRD PARTIES IN FUTURE TRANSACTIONS, NO PERSON OTHER THAN THOSE LISTED SHOULD RELY ON THIS SURVEY.
 COPYRIGHTED MATERIAL © 2022
 NOT VALID UNLESS ALL SHEETS PRESENT