

# PARKS, PRESERVES, AND RECREATION **MASTER PLAN**

## Interim Findings

October 13, 2015



**SARASOTA COUNTY**

**Your Community, Your Parks, Your Future**

**Complete the plan in 18 months**

**Defensible + solves identified deficiencies**

**Progressive + Innovative + “do-able”**

## Specific Project Objectives

1. Identify and prioritize residents' needs
2. Review, analyze, and make recommendations regarding level-of-service (LOS)
3. Identify gaps and opportunities throughout parks system including:
  - a) Facilities and amenities
  - b) Athletic fields, trails, beaches, water and preserve access locations
  - c) Major bicycle and pedestrian connections
  - d) Environmentally Sensitive Lands Protection Program (ESLPP) and Neighborhood Parklands Program (NPP)

## Specific Project Objectives

4. Recommend revisions and updates to the County's Comprehensive Plan
5. Identify emerging trends
6. Develop alternatives to meet identified gaps
7. Develop a long range plan (5, 10, and 20 years)
8. Review and analyze the operating budget
9. Prepare a sound financially feasible plan using existing resources

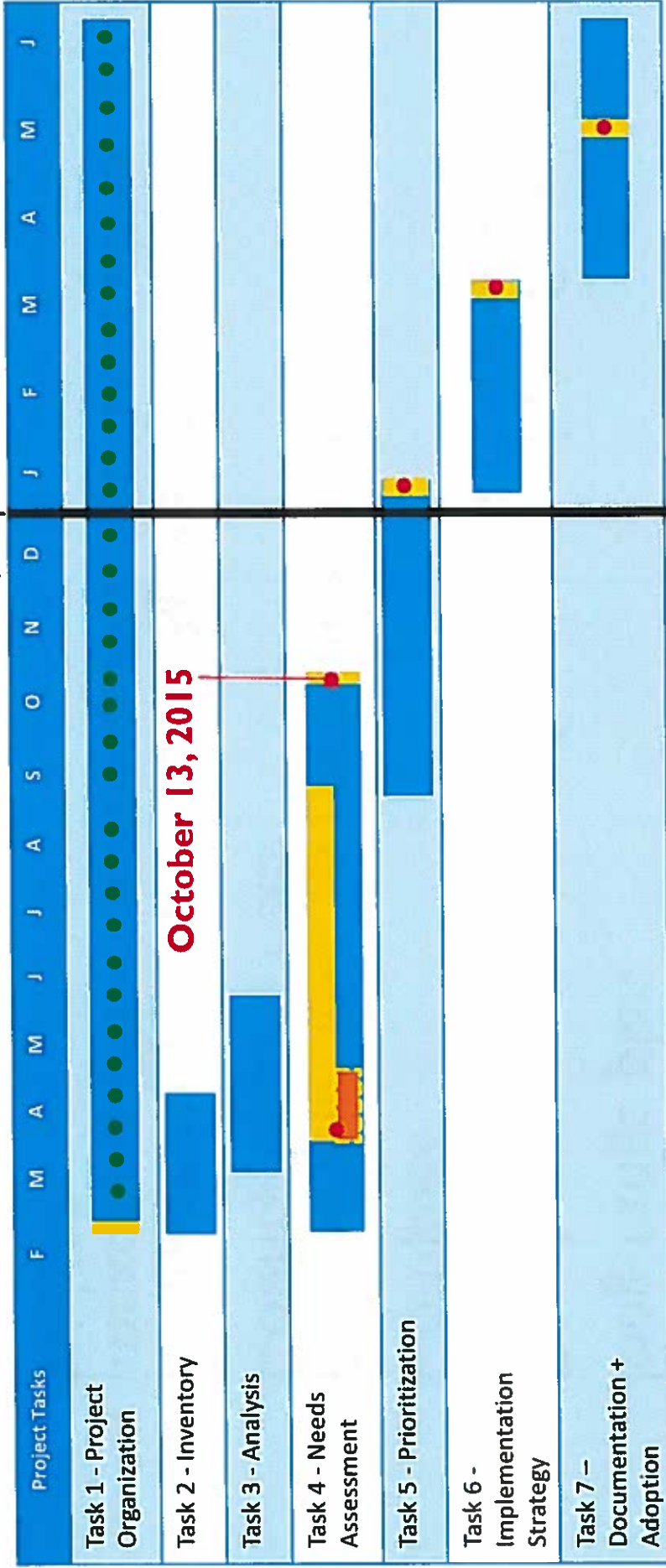
## Specific Project Objectives

10. Identify potential partnerships to implement the long-range plan
11. Develop concept plans for three of the County's parks (TBD) including the North County Sports Complex
12. Review and develop recommendations on County Impact Fees
13. Evaluate current Interlocal Agreements and impact on PRNR maintenance and operations budget

# Project Schedule

M O N T H S

2015 | 2016



October 13, 2015

- Task Time Period
- Public Engagement
- Statistically Valid Survey
- Toole + County Review Meetings
- BCC Meetings



**Sarasota County**  
Parks, Preserves, and Recreation Master Plan

# Needs Assessment Summary

## Needs Assessment Techniques

### Quantitative:

1. Statistically-Valid Survey – **748 responses**  
(6,000 mailed, 95% level of confidence, precision +/- 3.5%)
2. On-line Survey (non-statistically valid) – **1,531 responses**
3. Level of Service Analysis

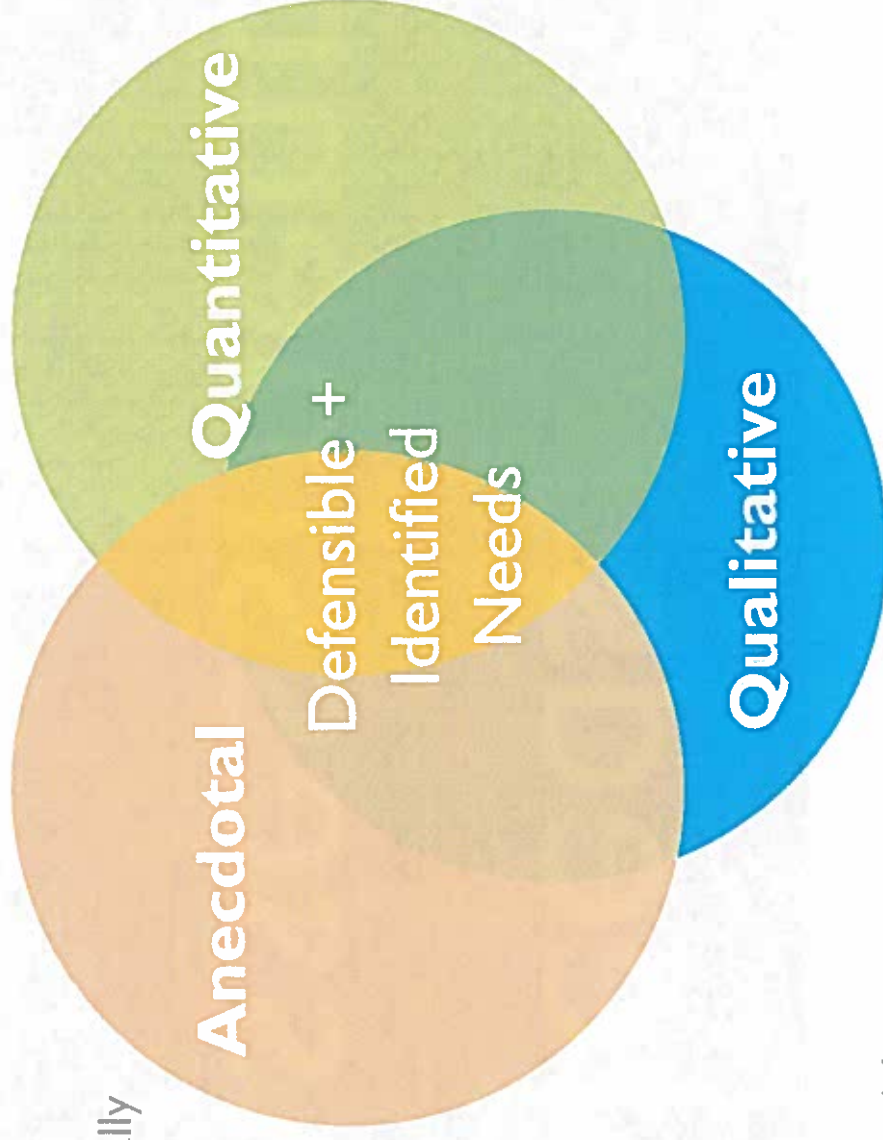
### Qualitative:

4. Interviews, Focus Groups, Public Workshops –

**2,900+ participants**

### Anecdotal:

5. Site Evaluations
6. Operations Assessment
7. Program Assessment
8. Bicycle and Pedestrian Connectivity
9. Trends Analysis



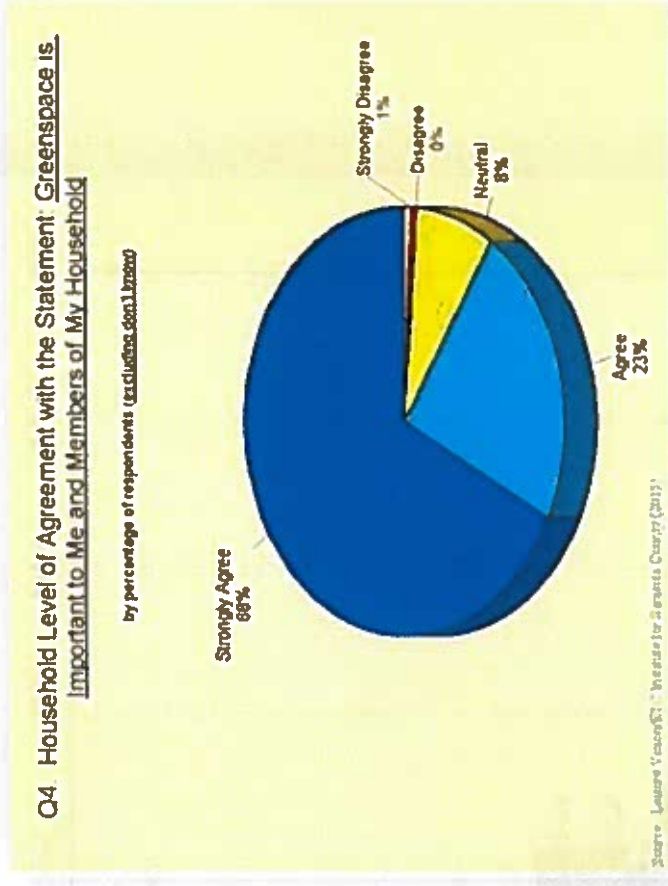
## Preliminary Findings

- The County has an excellent parks, preserves and recreation system that is much beloved by County residents and visitors and is a significant factor in the County's high quality of life.
- The system needs to be updated to address:
  - 1) Changing needs and trends
  - 2) Deferred maintenance and repairs
  - 3) Sports tourism
- Continued emphasis should be placed on:
  - Off-leash dog parks
  - Playgrounds
  - Athletic fields
  - Access to preserves
  - Connectivity
  - Nature trails and centers
  - Wildlife habitat
  - Small neighborhood parks
  - Fitness and exercise facilities
  - Water access
  - Paved trails
  - Public beach access
  - Restrooms
  - Fishing areas
  - Boat ramps and launches
  - Large community and regional parks
- The County may also benefit from improved aesthetics, additional amenities and reinforcement of a Sarasota County “brand” throughout the system.

# Needs Assessment Techniques

# 1. Statistically Representative Mail/Telephone Survey

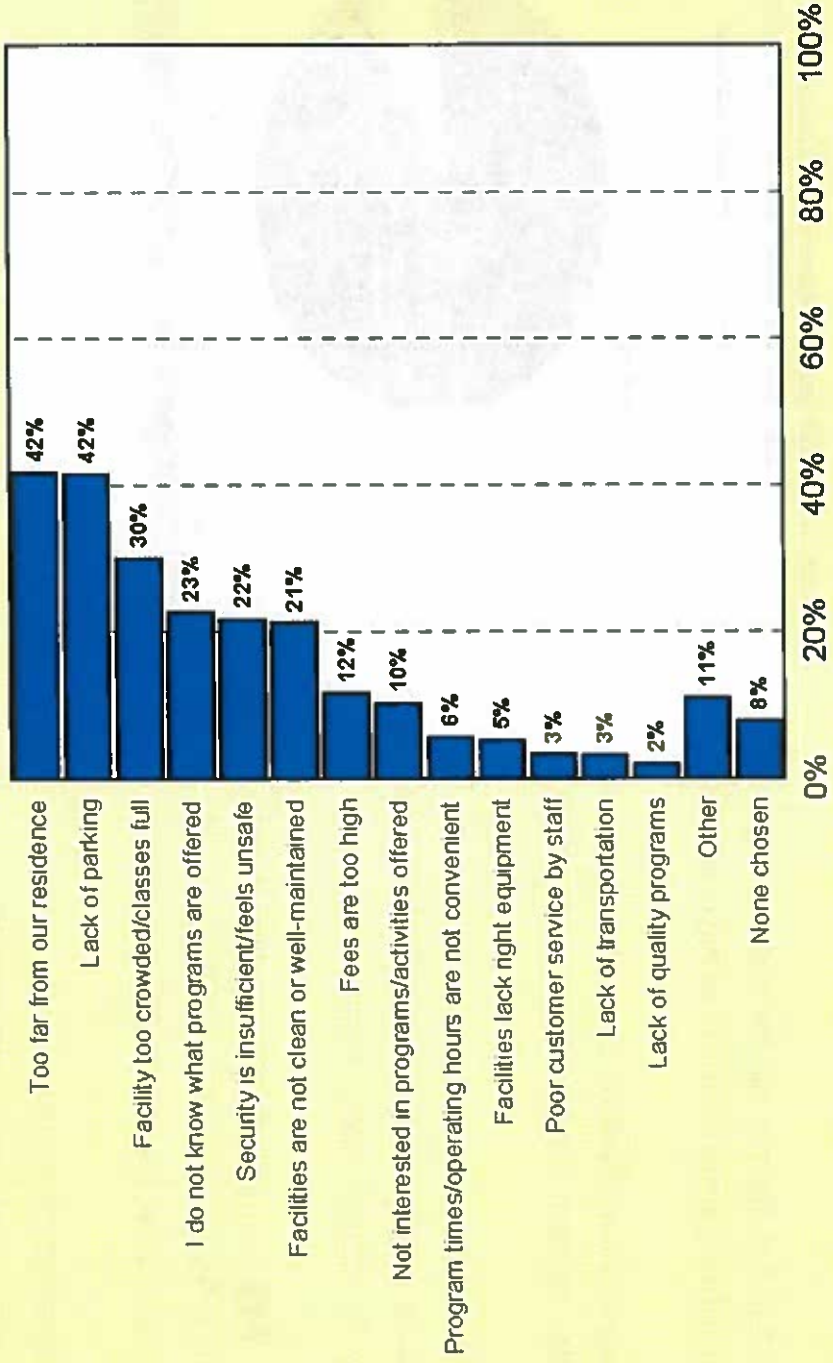
- Survey conducted by ETC/ Leisure Vision
- Purchased full list by zip code/ shapefile; used random number generator to create sample
- **6,000** + surveys mailed to a random sample of households, option to complete in Spanish
- Households that did not return the survey by mail received a follow-up phone call to complete the survey by telephone if desired
- A total of **748** households completed the survey, resulting in a 95% level of confidence with a precision rate of at least +/- 3.5 percent
- Survey responses are statistically representative of the County's demographic profile
- Responses were geo-coded by location, although not statistically representative
- Northport, Venice surveys are forthcoming



# Statistically Representative - Reasons that Prevent or Limit Use

## Q3. Primary Reasons Most Likely to PREVENT or LIMIT Households from Using Sarasota County Owned or Operated Parks, Beach Areas, Trails, Preserves, Sports and Recreation Fields and Activities

by percentage of respondents (multiple selections possible)



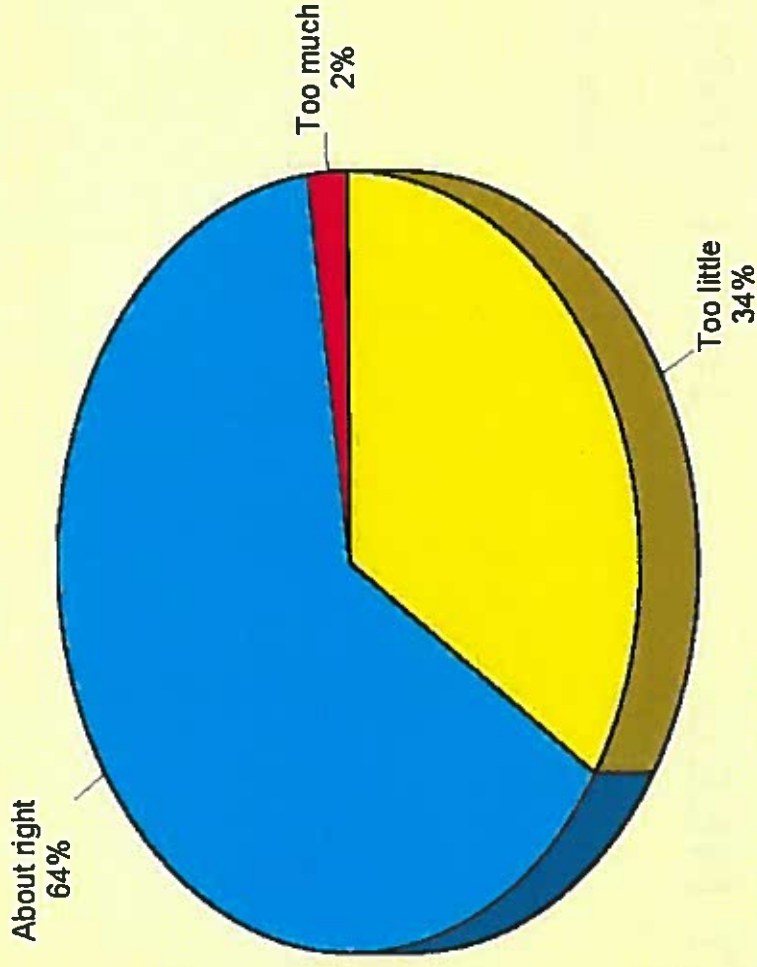
Source: Leisure Vision/ETC Institute for Sarasota County (2015)



# Statistically Representative - Responses Regarding Amount of Land

Q5. Household Feeling Toward Amount of Land in Public Ownership for Environmental Initiatives

by percentage of respondents (excluding don't know)



Source: Leisure Vision/ETC Institute for Sarasota County (2015)

**Statistically Representative -  
Top Priorities**

**LOW IMPORTANCE/  
HIGH UNMET NEED**

**HIGH IMPORTANCE/  
HIGH UNMET NEED**

- Off Leash Dog Parks
- Fitness and Exercise Facilities

**LOW IMPORTANCE/  
LOW UNMET NEED**

**HIGH IMPORTANCE/  
LOW UNMET NEED**



**Statistically Representative -  
Continued Emphasis**

**LOW IMPORTANCE/  
HIGH UNMET NEED**

- Off Leash Dog Parks
- Fitness and Exercise Facilities

**HIGH IMPORTANCE/  
HIGH UNMET NEED**

- Nature Trails and Centers
- Wildlife Habitat
- Small Neighborhood Parks
- Paved Trails
- Boat Ramps and Launches
- Water Access
- Fishing Areas
- Large Community and Regional Parks
- Public Recreational Beach Space
- Playground Equipment and Play Areas

**LOW IMPORTANCE/  
LOW UNMET NEED**

**HIGH IMPORTANCE/  
LOW UNMET NEED**

**Statistically Representative -  
Special Interest/ Low Priority**

**LOW IMPORTANCE/  
HIGH UNMET NEED**

- Land for Hunting
- Lake for Water Skiing/Wakeboarding
- Gun Range/ Archery Locations
- Campgrounds
- Swimming Pools and Spray grounds
- Volleyball Courts
- Blueways (Paddling Trails)

**HIGH IMPORTANCE/  
HIGH UNMET NEED**

- Off Leash Dog Parks
- Fitness and Exercise Facilities

- Nature Trails and Centers
- Wildlife Habitat
- Small Neighborhood Parks
- Paved Trails
- Boat Ramps and Launches
- Water Access
- Fishing Areas
- Large Community and Regional Parks
- Public Recreational Beach Space
- Playground Equipment and Play Areas

**LOW IMPORTANCE/  
LOW UNMET NEED**

**HIGH IMPORTANCE/  
LOW UNMET NEED**



**Statistically Representative - Lower Importance**

**LOW IMPORTANCE/  
HIGH UNMET NEED**

- Land for Hunting
- Lake for Water Skiing/Wakeboarding
- Gun Range/ Archery Locations
- Campgrounds
- Swimming Pools and Spray grounds
- Volleyball Courts
- Blueways (Padding Trails)

**HIGH IMPORTANCE/  
HIGH UNMET NEED**

- Off Leash Dog Parks
- Fitness and Exercise Facilities

- **Tennis/ Racquet Sports/ Pickleball**
- **Gymnasiums**
- **Football/ Lacrosse Fields**
- **Basketball Courts**
- **Soccer Fields**
- **Recreational Trails**
- **Baseball and Softball Fields**
- **Shelters and Pavilions**
- **Golf Courses**

**LOW IMPORTANCE/  
LOW UNMET NEED**

- Nature Trails and Centers
- Wildlife Habitat
- Small Neighborhood Parks
- Paved Trails
- Boat Ramps and Launches
- Water Access
- Fishing Areas
- Large Community and Regional Parks
- Public Recreational Beach Space
- Playground Equipment and Play Areas

**HIGH IMPORTANCE/  
LOW UNMET NEED**



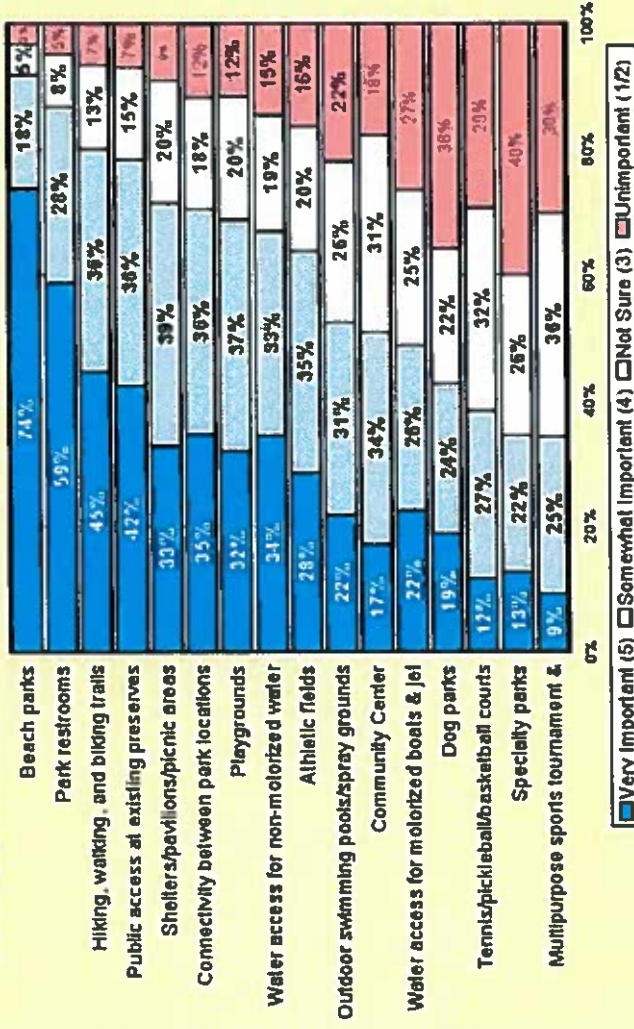
# Statistically Representative - Allocation of Funds

**Allocation of Funds to repair, replace or expand facilities or amenities (top six above 70%, 1<sup>st</sup> + 2<sup>nd</sup> choice):**

- Beach parks (92%)
- Park restrooms (88%)
- Hiking, walking, and biking trails (81%)
- Public access at existing preserves (78%)
- Shelters/ pavilions/ picnic areas (72%)
- Connectivity between parks (71%)

## Q10. Importance of Various Actions

by percentage of respondents who rated the item as a 1 to 5 on a 5-point scale (excluding don't know's)



Source: Leisure Vision/ETC Institute for Sarasota County (2015)

# Statistically Representative - Allocation of Funds - Geocoded

**Allocation of Funds to repair, replace or expand facilities or amenities Red cells indicate top 5 by location. (“very important” + “somewhat important”)**

- Beach parks
- Restrooms
- Hiking, walking, and biking trails
- Public access at existing preserves
- Connectivity to parks

Facilities	Locations									
	City of Sarasota	City of North Port	City of Venice	Longboat Key	Englewood	Nokomis/Osprey	East of I-75 N	East of I-75 S	Palmer	
Beach Parks	92.9%	91.7%	93.3%	85.7%	88.1%	88.7%	92%	87.3%	92.7%	
Restrooms	88.7%	84.9%	83.9%	100%	85%	85.5%	90.3%	81.8%	81.1%	
Hiking, Walking, and Biking Trails	83.1%	69.7%	79.1%	100%	87.2%	85.3%	70%	72.8%	91.8%	
Access to Preserves	83%	75.3%	74.4%	50%	80%	81.1%	71%	66.7%	81.5%	
Connectivity to Parks	77.6%	59.5%	68.1%	85.8%	64.1%	78.6%	70.5%	61.9%	73.7%	
Non-motorized Water Access	58.6%	55.4%	60.3%	83.3%	79.1%	75.4%	75.3%	57.9%	57.9%	
Playgrounds	72.2%	65.9%	67%	42.9%	60.5%	75.8%	72.5%	77.7%	57.0%	
Athletic Fields	64.6%	59.6%	63.7%	66.7%	58.9%	60.3%	78%	68.4%	63.8%	
Community Centers	54.2%	51.3%	56.2%	83.3%	53.8%	49.3%	39.1%	2.8%	37.8%	
Shelters/Pavilions	76%	64%	82%	50%	72.5%	40%	66.7%	56.5%	69.4%	
Dog Parks	48.2%	37.5%	43.9%	50%	35%	39.1%	37.6%	44.5%	41%	
Sports Tournaments	33%	39.7%	29.2%	16.7%	30.8%	28.8%	47.1%	38.9%	32.4%	
Outdoor Pools/Spray grounds	61.4%	65.8%	43.5%	16.7%	41%	42.1%	47.9%	37.8%	52.6%	
Tennis/Pickleball/Basketball	47.9%	36.9%	38.1%	66.7%	25.6%	29.9%	27.3%	27.8%	38.9%	
Motorized Water Access	47.9%	47.6%	44.6%	80%	59%	49.3%	56.8%	52.7%	38.9%	

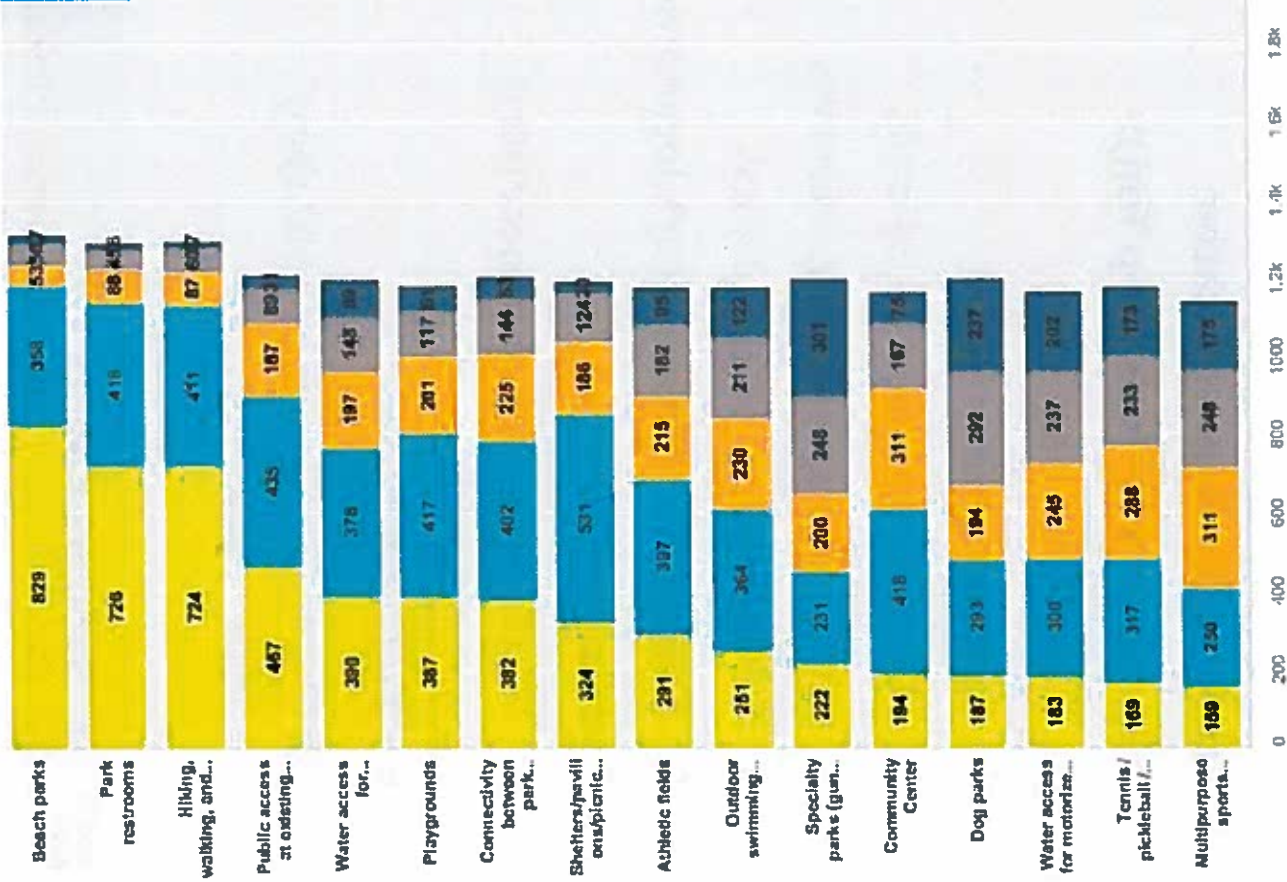
# Summary of Needs

	1. Mail/ Phone Survey	2. On-Line Survey	3. LOS Analysis	4. Inter-views, Focus Groups, Work-hops	5. Site Visits	6. Operation	7. Programs	8. Bike/ Ped	9. Trends
<b>Priority Needs:</b>									
Off-leash Dog Parks	●								
Fitness, Exercise Facilities	●								
Playgrounds	●								
Baseball/ Softball Fields									
Football/ Soccer/ Lacrosse Fields									
Nature Trails and Centers	●								
Wildlife Habitat	●								
Small Neighborhood Parks	●								
Paved Trails	●								
Boat Ramps and Launches	●								
Water Access	●								
Fishing Areas	●								
Large Parks	●								
Public Beaches	●								
<b>Allocation of Funds to Repair, Replace or Expand (in addition to above):</b>									
Beach Parks	●								
Restrooms, Water Fns	●								
Trails	●								
Access to Preserves	●								
Shelters/ Pavilions/ Picnic areas	●								
General Improvements									
Add'l Maintenance, Programs									

## 2. On-Line Survey (1,531 responses) – Allocation of Funds

Allocation of Funds to repair, replace or expand facilities or amenities (top 5 above 70%, “very important” + “somewhat important”):

- Beach parks (90.4%)
- Park restrooms (88.5%)
- Hiking, walking, and biking trails (87.38%)
- Public access at existing preserves (74.6%)
- Shelters/ pavilions/ picnic areas (71.6%)



# Statistically Representative vs. On-line Survey

## Statistically Representative Allocation of Funds (Top Ten):

1. Beach parks
2. Park restrooms
3. Hiking, walking, and biking trails
4. Public access at existing preserves
5. Shelters/pavilions/picnic areas
6. Connectivity between park locations
7. Playgrounds
8. Water access for non-motorized water vessels
9. Athletic fields
10. Outdoor swimming pools/ spray fields

## On-line Survey Allocation of Funds (Top Ten):

1. Beach parks
2. Park restrooms
3. Hiking, walking, and biking trails
4. Public access at existing preserves
5. Shelters/pavilions/picnic areas
6. Playgrounds
7. Connectivity between park locations via sidewalks, trails, etc.
8. Water access for non-motorized water vessels
9. Athletic fields
10. Community Center

# Summary of Needs

	1. Mail/ Phone Survey	2. On-Line Survey	3. LOS Analysis	4. Inter-views, Focus Groups, Work-hops	5. Site Visits	6. Operation	7. Programs	8. Bike/ Ped	9. Trends
<b>Priority Needs:</b>									
Off-leash Dog Parks	●								
Fitness, Exercise Facilities	●								
Playgrounds	●								
Baseball/ Softball Fields									
Football/ Soccer/ Lacrosse Fields									
Nature Trails and Centers	●								
Wildlife Habitat	●								
Small Neighborhood Parks	●								
Paved Trails	●								
Boat Ramps and Launches	●								
Water Access	●								
Fishing Areas	●								
Large Parks	●								
Public Beaches	●								
<b>Allocation of Funds to Repair, Replace or Expand (in addition to above):</b>									
Beach Parks	●	●							
Restrooms, Water Ftns	●	●							
Trails	●	●							
Access to Preserves	●	●							
Shelters/ Pavilions/ Picnic areas	●	●							
General Improvements									
Add'l Maintenance, Programs									

### 3. Level of Service Analysis (LOS)

- No State or National Standards, only Benchmarking
- Current County LOS Metrics:
  - Acreage: 7 acres/ 1000 residents
  - Facilities: 1 baseball/softball field per 2,500 residents;  
1 football/ soccer field per 4,200 residents
  - Access: No standards

## LOS – Acreage (Benchmarking – Other Counties)

	Sarasota County <sup>1</sup>	Charlotte County <sup>1</sup>	Collier County <sup>2</sup>	Lee County <sup>3</sup>	Manatee County <sup>4</sup>	Pinellas County <sup>5</sup>	Benchmark County Median	Benchmark County Average
<b>Population</b>	250,577	145,980 <sup>*</sup>	300,237 <sup>*</sup>	361,890 <sup>*</sup>	266,699 <sup>*</sup>	272,348 <sup>*</sup>	-	-
<b>Total County-owned Public Lands</b>	48,318.43	5,320.02	4,490.70	29,284.00	31,245.00	23,591.00	26,437.50	23,708.19
<b>Total County Acreage LOS (Acres / 1,000 pop.)</b>	192.83	36.20	14.96	80.92	117.15	86.62	83.77	88.11
<b>Total County Park Land</b>	3,902.43	982.51	798.50	4,411.00	1,245.00	3,591.00	2,418.00	2,488.41
<b>Total County Park Land LOS (Acres / 1,000 pop.)</b>	15.57	6.68	2.66	12.19	4.67	13.19	9.44	9.16

<sup>1</sup> Source: Sarasota County  
<sup>2</sup> Source: Florida Legislative Office of Economic and Demographic Research  
<sup>3</sup> Source: Charlotte County Needs Assessment Study  
<sup>4</sup> Source: Collier County Parks and Recreation Master Plan  
<sup>5</sup> Source: Lee County Concurrence Report  
<sup>6</sup> Source: Manatee County Parks and Natural Resource Program Guide  
<sup>7</sup> Source: Pinellas County Recreation, Open Space and Culture System Master Plan

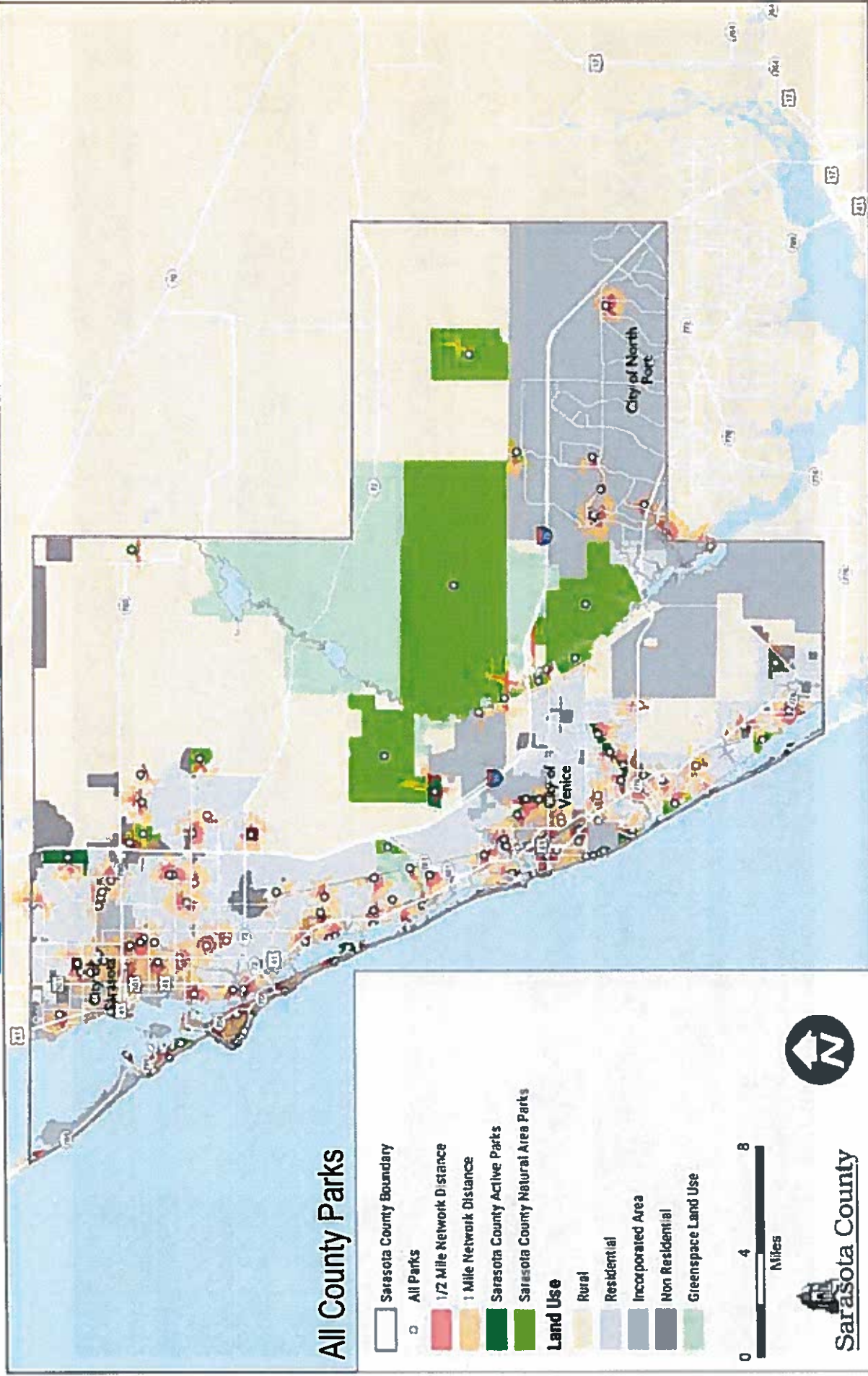
# LOS – Facilities (Sarasota County Comprehensive Plan)

County Population*		2014	2020	2025	2030	2035
		250,577	266,427	280,509	292,812	303,272
Recreation Facility	Current Inventory	Facilities Needed to Meet LOS	Facilities Needed to Meet LOS	Facilities Needed to Meet LOS	Facilities Needed to Meet LOS	Facilities Needed to Meet LOS
Diamond Fields (Baseball/softball fields)	78	(22)	(29)	(34)	(39)	(43)
Rectangle Fields (Soccer/football fields)	56	(4)	(7)	(11)	(14)	(16)
County Comprehensive Plan Recreation Facilities LOS						
I/ 2,500 residents						
I/ 4,200 residents						

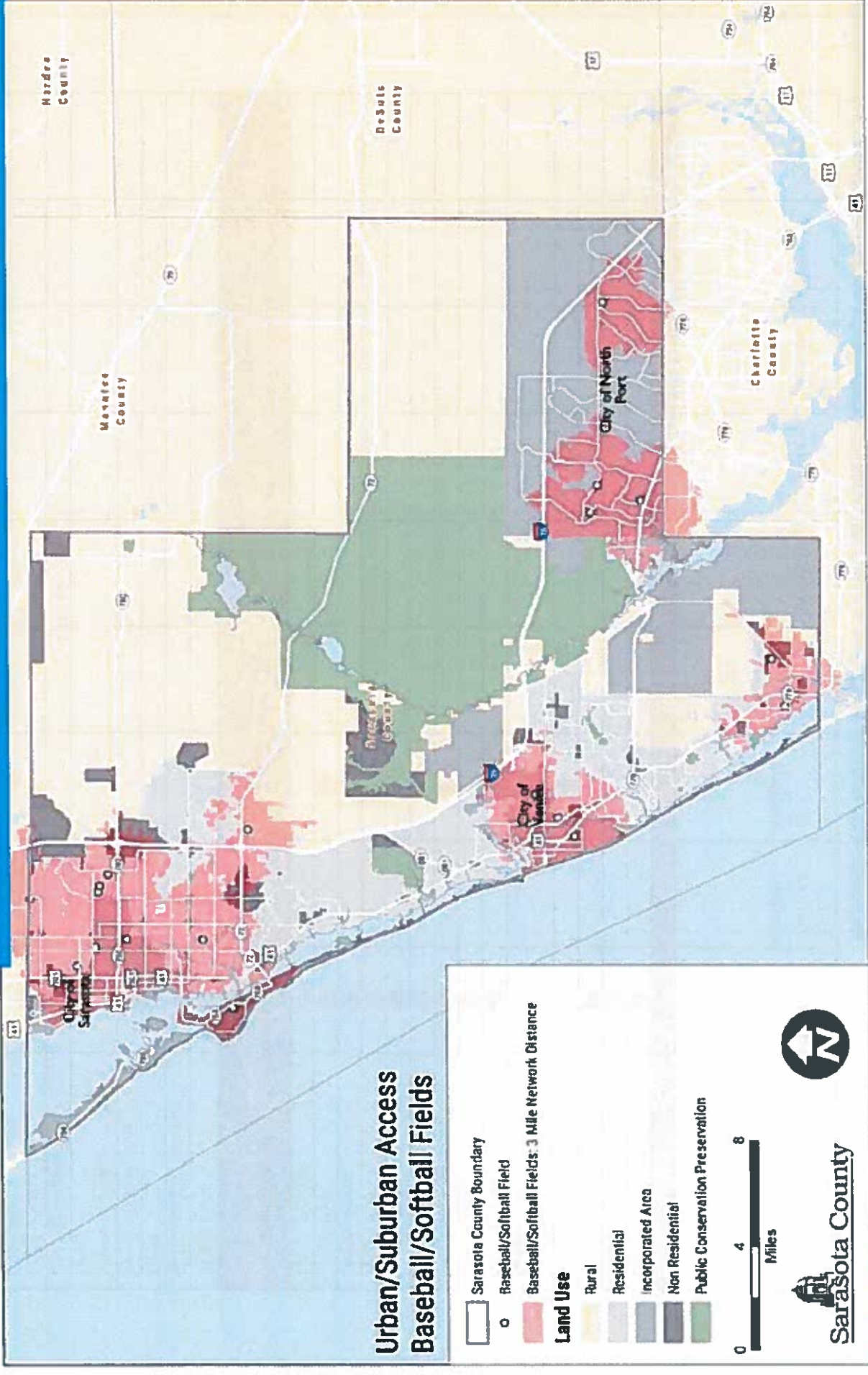
## LOS – Facilities (Benchmarking – State Comprehensive Outdoor Recreation Plan (SCORP))

Facility Type:	Southwest Region LOS (facility per 1,000 residents)	Sarasota County 2014 LOS (facility per 1,000 residents)	Surplus / (Need) to meet Southwest Region LOS in 2015	Surplus / (Need) to meet Southwest Region LOS by 2020	Surplus / (Need) to meet Southwest Region LOS by 2025	Surplus / (Need) to meet Southwest Region LOS by 2030	Surplus / (Need) to meet Southwest Region LOS by 2035
Baseball fields	0.85	2.00	32	30	29	28	27
Football fields	0.48	1.20	16	15	14	14	14
Soccer fields	0.45	0.76	8	7	6	6	5
Outdoor basketball courts	0.86	1.06	5	3	2	1	1
Tennis courts	1.46	2.39	30	27	25	22	20
Outdoor swimming pools	0.09	0.07	(1)	(2)	(2)	(2)	(3)
Saltwater boat ramps	0.16	0.38	14	13	13	12	12

# LOS – Park Access Equity Example



# LOS – Facility Access Equity Example



Sarasota County  
Parks, Preserves, and Recreation Master Plan

# Summary of Needs

	1. Mail/ Phone Survey	2. On-Line Survey	3. LOS Analysis	4. Inter-views, Focus Groups, Work-hops	5. Site Visits	6. Operation	7. Programs	8. Bike/ Ped	9. Trends
<b>Priority Needs:</b>									
Off-leash Dog Parks	●		●						
Fitness, Exercise Facilities	●								
Playgrounds	●		●						
Baseball/ Softball Fields			●						
Football/ Soccer/ Lacrosse Fields			●						
Nature Trails and Centers	●								
Wildlife Habitat	●								
Small Neighborhood Parks	●		●						
Paved Trails	●								
Boat Ramps and Launches	●								
Water Access	●								
Fishing Areas	●								
Large Parks	●		●						
Public Beaches	●								
<b>Allocation of Funds to Repair, Replace or Expand (in addition to above):</b>									
Beach Parks	●	●							
Restrooms, Water Ftns	●	●							
Trails	●	●							
Access to Preserves	●	●							
Shelters/ Pavilions/ Picnic areas	●	●							
General Improvements									
Add'l Maintenance, Programs									



# Summary of Needs

	1. Mail/ Phone Survey	2. On-Line Survey	3. LOS Analysis	4. Interviews, Focus Groups, Workshops	5. Site Visits	6. Operation	7. Programs	8. Bike/ Ped	9. Trends
<b>Lower Priority Needs</b>									
Swimming Pools/ Aquatics			●						
Tennis/Racquet Sports/ Pickleball Courts			●						
Basketball Courts			●						
Indoor Recreation Centers			●						
Therapeutic Rec Centers			●						
Hunting Areas									
Lake for Water Skiing/ Wakeboarding									
Gun Range/ Archery									
Campgrounds									
Volleyball Courts									
Gymnasiums									
Basketball Courts									
Golf Courses									
<b>Planning Needs:</b>									
Recreation Program Plan									
Marketing Plan									
Design Standards									
Updated Resource Management Plans									

## 4. Interviews, Focus Groups, Public Workshops

Over **2,900** participants:

- Commissioner Interviews
- 21 Focus Groups  
**406 participants**
- 3 Public Workshops  
**266 participants**
- 14 Special Events, Outreach  
**2,200+ participants**



## Commissioner Interviews: Top Priorities

- Additional sports fields, including the proposed 100 acre North County Sports Complex (5)
- Additional access to conservation lands (3)
- Legacy Trail (1)
- Additional playgrounds (1)

## Needs:

Priority:	Venue	North Port	Sarasota
1.	Pickleball courts	Extend the Legacy Trail	Pickleball courts
2.	Wildlife and natural resource protection	Drinking fountain at Culverhouse Nature Park	Hunting areas
3.	Off-road trails	More kayak launches	Water park
4.	Restrooms and drinking fountains	Outdoor pickleball facility	Extend the Legacy Trail
5.	Kayak storage, lessons	Hunting areas	Wildlife preserves, habitat Playgrounds, play equipment

## Spending Priorities:

Priority:	Venue	North Port	Sarasota
1.	Renovate tennis/ pickleball courts	Increase access to preserves with trails, signage, etc.	Renovate tennis/ pickleball courts
2.	Increase access to preserves with trails, signage, etc.	Develop new sports facilities	Provide additional paved trails
3.	Improve beach parks	Upgrade existing sports fields	Expand non-motorized boat water access
4.	Provide additional paved trails	Expand non-motorized boat water access	Upgrade existing playgrounds
5.	Renovate restrooms	Upgrade existing playgrounds	Increase access to preserves with trails, signage, etc.

# Summary of Needs

	1. Mail/ Phone Survey	2. On-Line Survey	3. LOS Analysis	4. Inter-views, Focus Groups, Work-hops	5. Site Visits	6. Operation	7. Programs	8. Bike/ Ped	9. Trends
<b>Priority Needs:</b>									
Off-leash Dog Parks	●		●	●					
Fitness, Exercise Facilities	●			●					
Playgrounds	●		●	●					
Baseball/ Softball Fields			●	●					
Football/ Soccer/ Lacrosse Fields			●	●					
Nature Trails and Centers	●			●					
Wildlife Habitat	●			●					
Small Neighborhood Parks	●		●						
Paved Trails	●			●					
Boat Ramps and Launches	●								
Water Access	●			●					
Fishing Areas	●								
Large Parks	●		●						
Public Beaches	●								
<b>Allocation of Funds to Repair, Replace or Expand (in addition to above):</b>									
Beach Parks	●	●		●					
Restrooms, Water Ftns	●	●		●					
Trails	●	●		●					
Access to Preserves	●	●		●					
Shelters/ Pavilions/ Picnic areas	●	●		●					
General Improvements									
Add'l Maintenance, Programs									

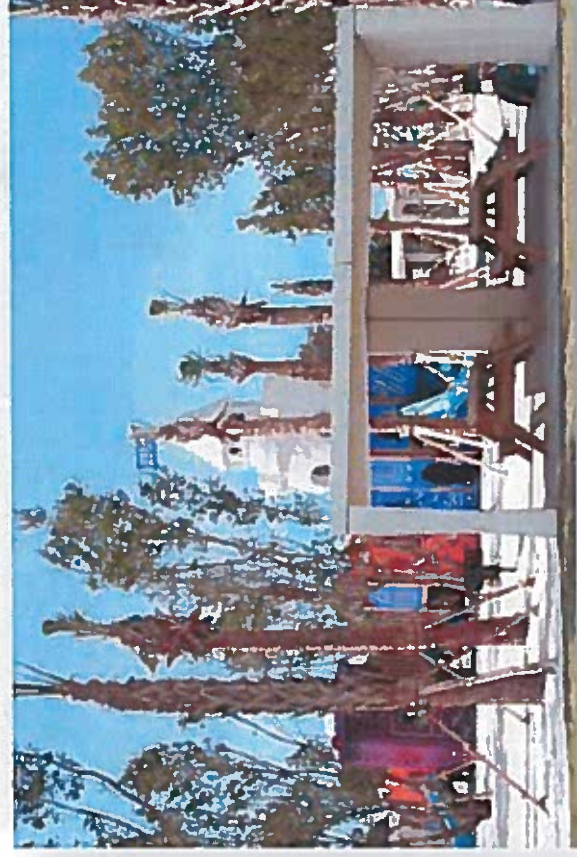
# Summary of Needs

	1. Mail/ Phone Survey	2. On-Line Survey	3. LOS Analysis	4. Inter-views, Focus Groups, Work-hops	5. Site Visits	6. Operation	7. Programs	8. Bike/ Ped	9. Trends
<b>Lower Priority Needs</b>									
Swimming Pools/ Aquatics			●	●					
Tennis/Racquet Sports/ Pickleball Courts			●	●					
Basketball Courts			●						
Indoor Recreation Centers			●						
Therapeutic Rec Centers			●						
Hunting Areas				●					
Lake for Water Skiing/ Wakeboarding									
Gun Range/ Archery									
Campgrounds									
Volleyball Courts									
Gymnasiums									
Basketball Courts									
Golf Courses									
<b>Planning Needs:</b>									
Recreation Program Plan									
Marketing Plan									
Design Standards									
Updated Resource Management Plans									

# 5. Site Evaluations – 143 Parks / Preserves

Evaluation Criteria	Score
ACCESS: Proximity, Access and Linkages	2.8
COMFORT: Comfort and Image	3.1
USE: Uses, Activities and Sociability	2.7
SUSTAINABILITY: Environmental Sustainability	2.6
BUILDINGS: Buildings and Architecture (If relevant)	3.9
<b>Total System Average</b>	<b>3.0</b>

Evaluation Legend	Score
Well Below Expectations	1.0
Not Meeting Expectations	2.0
Meets Expectations	3.0
Exceeds Expectations	4.0
Far Exceeds Expectations	5.0



### Preliminary Findings:

- Improve existing parks due to age, deferred maintenance, changing needs
- Focus on “Uses, Activities and Sociability” and “Environmental Sustainability”
- Consider County-wide design standards and parks “brand”



### Preliminary Findings:

- Improve monitoring of listed species, control of exotic and invasive species, burning, education programs
- Update Resource Management Plans including opportunities for access, recreation, and revenues
- Re-evaluate land protection priorities



# Summary of Needs

	1. Mail/ Phone Survey	2. On-Line Survey	3. LOS Analysis	4. Inter-views, Focus Groups, Work-hops	5. Site Visits	6. Operation	7. Programs	8. Bike/ Ped	9. Trends
<b>Priority Needs:</b>									
Off-leash Dog Parks	●		●	●					
Fitness, Exercise Facilities	●			●					
Playgrounds	●		●	●					
Baseball/ Softball Fields			●	●					
Football/ Soccer/ Lacrosse Fields			●	●					
Nature Trails and Centers	●			●					
Wildlife Habitat	●			●					
Small Neighborhood Parks	●		●						
Paved Trails	●			●					
Boat Ramps and Launches	●								
Water Access	●			●					
Fishing Areas	●								
Large Parks	●		●						
Public Beaches	●								
<b>Allocation of Funds to Repair, Replace or Expand (in addition to above):</b>									
Beach Parks	●	●		●					
Restrooms, Water Fns	●	●		●	●				
Trails	●	●		●	●				
Access to Preserves	●	●		●	●				
Shelters/ Pavilions/ Picnic areas	●	●		●	●				
General Improvements					●				
Add'l Maintenance, Programs					●				



# Summary of Needs

	1. Mail/ Phone Survey	2. On-Line Survey	3. LOS Analysis	4. Inter-views, Focus Groups, Work-hops	5. Site Visits	6. Operation	7. Programs	8. Bike/ Ped	9. Trends
<b>Lower Priority Needs</b>									
Swimming Pools/ Aquatics			●	●					
Tennis/Racquet Sports/ Pickleball Courts			●	●					
Basketball Courts			●						
Indoor Recreation Centers			●						
Therapeutic Rec Centers			●						
Hunting Areas				●					
Lake for Water Skiing/ Wakeboarding									
Gun Range/ Archery									
Campgrounds									
Volleyball Courts									
Gymnasiums									
Basketball Courts									
Golf Courses									
<b>Planning Needs:</b>									
Recreation Program Plan									
Marketing Plan									
Design Standards					●				
Updated Resource Management Plans									

## 6. Operations Assessment

### Preliminary Findings:

- Fees, revenues should be further evaluated.
- Maintenance and operations staffing and capital spending for repairs and replacement, should be further evaluated



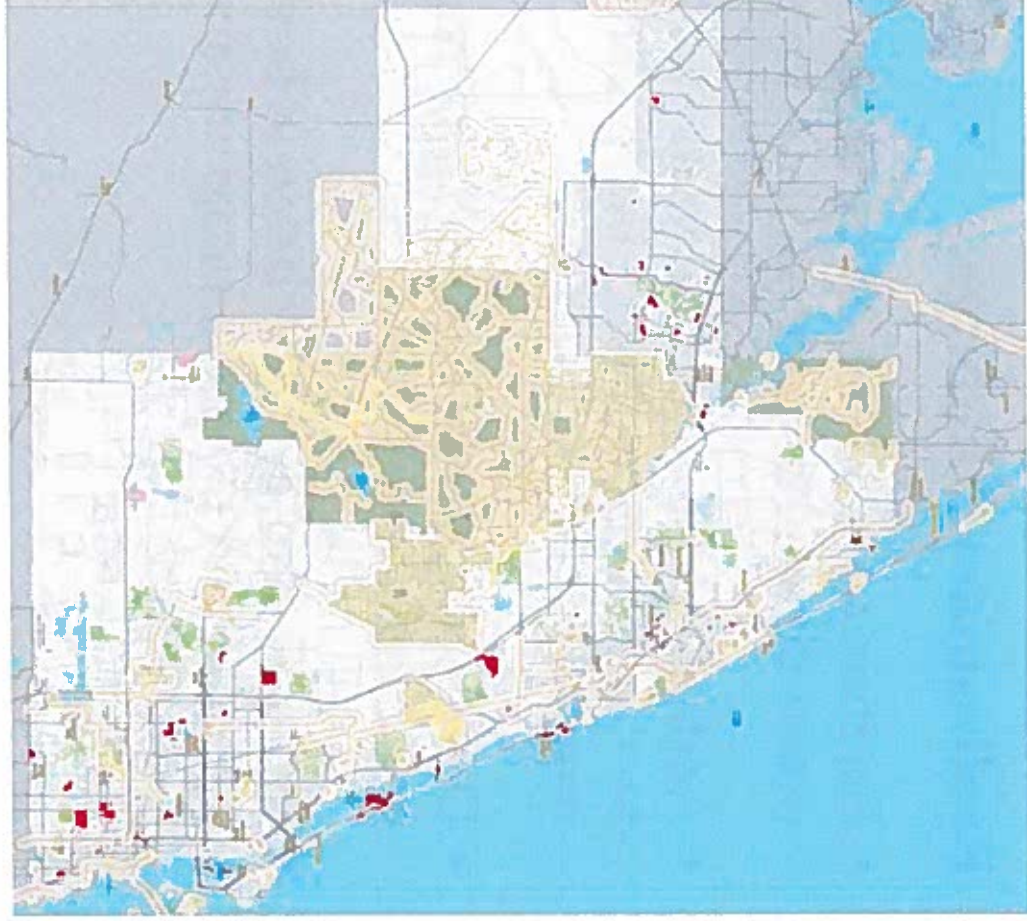
### Preliminary Findings:

- Further evaluate need for additional, more diverse programs
- Additional facilities and amenities may be considered to meet increased demand
- Develop updated Recreation Program and Marketing Plans
- Evaluate and plot the balance between internal and external program and event needs



## 8. Bicycle and Pedestrian Connectivity

Parks In Red Not Within 1/4 Mile of Bicycle/  
Pedestrian Facilities



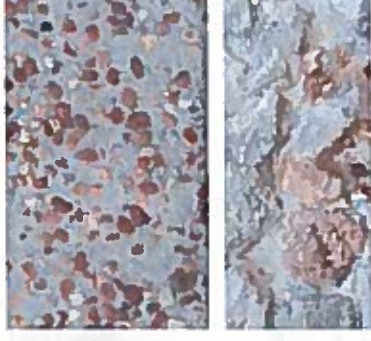
### Preliminary Findings:

- Access to a network of safe, convenient and connected facilities
- Engineering solutions to trail and on-road facility connections
- Addressing areas that are presently dangerous and/or intimidating
- Safe crossings of arterial roads on existing and proposed routes



### Preliminary Findings:

- More age-friendly communities
- Improved connectivity
- Access to nature
- Mitigation of impacts of tourism and travel ball
- Place-making



# Summary of Needs

	1. Mail/ Phone Survey	2. On-Line Survey	3. LOS Analysis	4. Inter-views, Focus Groups, Work-hops	5. Site Visits	6. Operation	7. Programs	8. Bike/ Ped	9. Trends
<b>Priority Needs:</b>									
Off-leash Dog Parks	●		●	●					●
Fitness, Exercise Facilities	●			●					
Playgrounds	●		●	●					
Baseball/ Softball Fields			●	●					
Football/ Soccer/ Lacrosse Fields			●	●					
Nature Trails and Centers	●			●					●
Wildlife Habitat	●			●					
Small Neighborhood Parks	●		●					●	●
Paved Trails	●			●					
Boat Ramps and Launches	●								●
Water Access	●			●					
Fishing Areas	●								
Large Parks	●		●						
Public Beaches	●								
<b>Allocation of Funds to Repair, Replace or Expand (in addition to above):</b>									
Beach Parks	●	●		●					●
Restrooms, Water Ftns	●	●		●	●				●
Trails	●	●		●	●			●	●
Access to Preserves	●	●		●	●			●	●
Shelters/ Pavilions/ Picnic areas	●	●			●				
General Improvements					●	●			●
Add'l Maintenance, Programs					●	●	●		●

# Summary of Needs

	1. Mail/ Phone Survey	2. On-Line Survey	3. LOS Analysis	4. Inter-views, Focus Groups, Work-hops	5. Site Visits	6. Operation	7. Programs	8. Bike/ Ped	9. Trends
<b>Lower Priority Needs</b>									
Swimming Pools/ Aquatics			●	●					●
Tennis/Racquet Sports/ Pickleball Courts			●	●					
Basketball Courts			●						
Indoor Recreation Centers			●						●
Therapeutic Rec Centers			●						●
Hunting Areas				●					
Lake for Water Skiing/ Wakeboarding									
Gun Range/ Archery									
Campgrounds									
Volleyball Courts									
Gymnasiums									
Basketball Courts									
Golf Courses									
<b>Planning Needs:</b>									
Recreation Program Plan						●			
Marketing Plan						●			
Design Standards					●	●			
Updated Resource Management Plans						●			

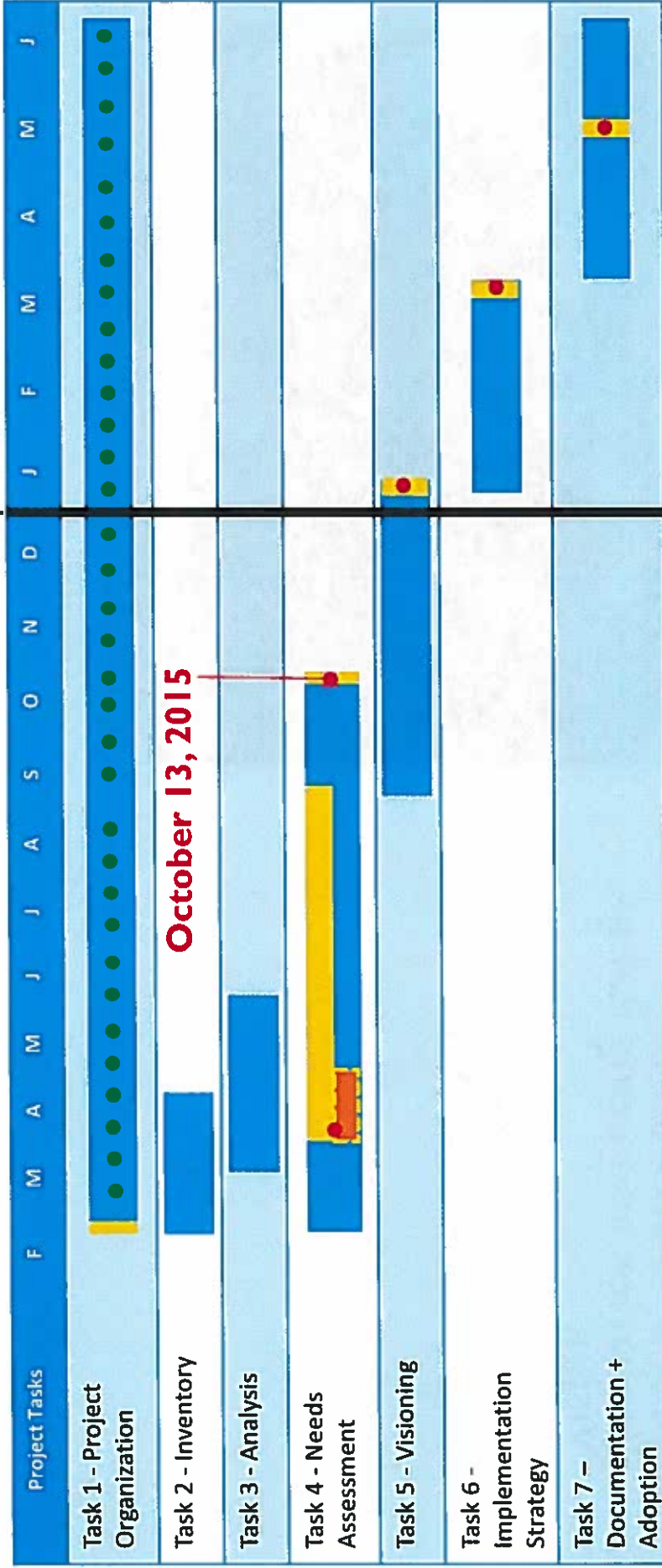
## Preliminary Findings






- The County has an excellent parks, preserves and recreation system that is much beloved by County residents and visitors and is a significant factor in the County's high quality of life.
- The system needs to be updated to address:
  - 1) Changing needs and trends
  - 2) Deferred maintenance and repairs
  - 3) Sports tourism
- Continued emphasis should be placed on:
  - Off-leash dog parks
  - Playgrounds
  - Athletic fields
  - Access to preserves
  - Connectivity
  - Nature trails and centers
  - Wildlife habitat
  - Small neighborhood parks
  - Fitness and exercise facilities
  - Water access
  - Paved trails
  - Public beach access
  - Restrooms
  - Fishing areas
  - Boat ramps and launches
  - Large community and regional parks
- The County may also benefit from improved aesthetics, additional amenities and reinforcement of a Sarasota County "brand" throughout the system.

# Next Steps

M O N T H S

2015 | 2016



-  Task Time Period
-  Public Engagement
-  Statistically Valid Survey
-  Toole + County Review Meetings
-  BCC Meetings



- Task 5 – Alternative Scenarios and Long Range Vision
- Task 6 – Funding, Phasing and Implementation Plan
- Task 7 – Master Plan Documentation and Adoption



# Questions, Discussion, Feedback?

